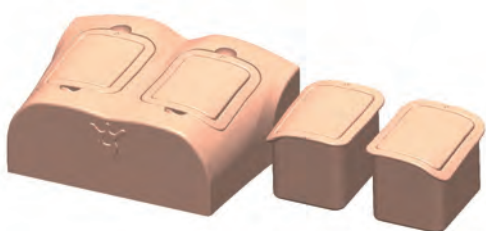


Lung Ultrasound Training Phantom ECHOLUNG

Instruction Manual

Product Supervision:
Hirosaki University
School of Medicine&Hospital
Department of General Medicine
Tadashi Kobayashi



Contents

- Before training
 - General Information P. 1
- Training/ after use P. 2
- Phantom ultrasound images P. 3 P. 4

This phantom is designed to facilitate training of lung ultrasound using actual ultrasound devices.

Please do NOT use this phantom outside of its purposes

● Features

- Four different kind of modules with different symptoms, A-Lines, B-Lines(few), B-Lines(many) and pneumonia/pleural effusions. and anatomical model of the body to simulate lung ultrasound.
- Each module simulates accurate anatomies of ribs, pleura and lungs.
- Materials whose ultrasound acoustic characteristics close to human body are used in the phantom.

Movie Site



English Site

Set includes

Before use, please make sure all the items below are included in the set

●Set includes

- | | | | |
|------------------------------------------------|--------------|-----------------------|---------|
| a. Body | 1 | c. Talcum powder | 1 |
| b. 4 kind of modules | 1 each | d. Instruction manual | 1 |
| Right : A-lines、Pnuemonia and pleural effusion | | e. Storage case | 1 |
| Left : B-lines(few)、B-lines(many) | | | |



⚠ Cautions

● Handle with care.

The materials for phantom are special composition of resin. Please handle with care at all times.

●The color of the phantom may change over time, though, please be assured that this is not deterioration of the material and the ultrasonic features of the phantom stay unaffected.

●Don't mark on the phantom with pen or leave printed materials contacted on their surface. Ink marks on the surface will be irremovable.

●Keep the phantom at room temperature, away from heat, moisture and direct sunlight.

● Wipe off the ultrasonic jelly by wet tissues soon after use.

※Never wipe the phantom with thinner or organic solvent.

1 Preparation

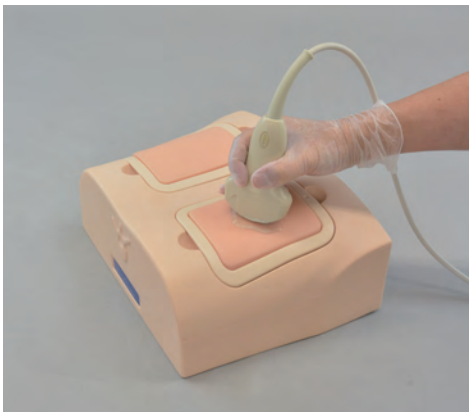


1. Set the body and four kind of modules to stable place.



2. Apply the ultrasonic jelly directly to the cube model

2 Training



The phantom can be scanned with actual ultrasound devices. The cases can be changed by exchanging the modules.

※ Please refer to page 3. and 4. for the ultrasound images and simulated targets.

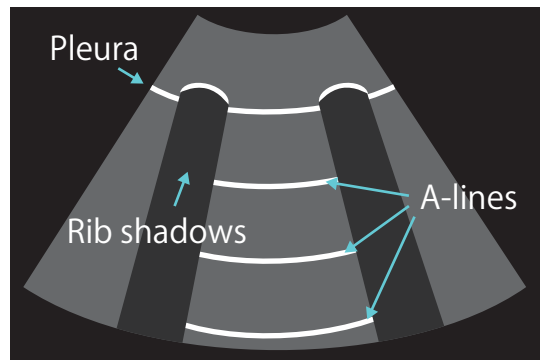
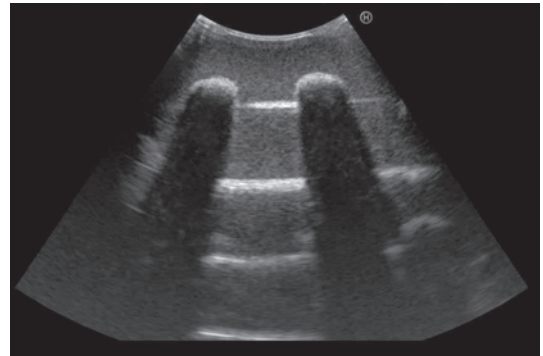
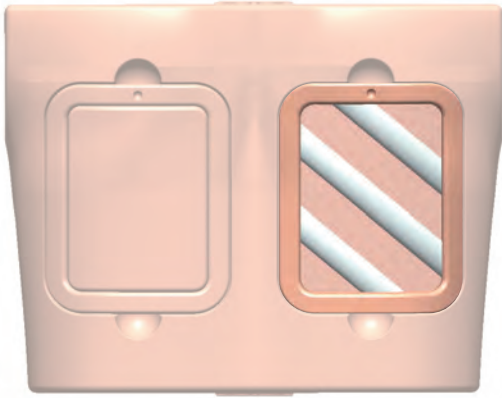
3 After training



Wipe the remaining gel completely with wet cloth. If remaining gel gets dried up on the body, it will be irremovable.

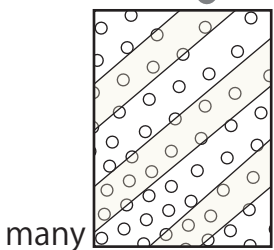
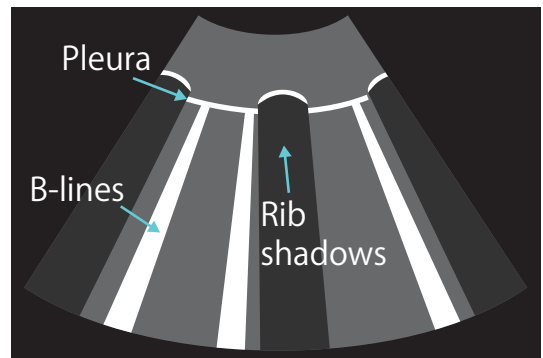
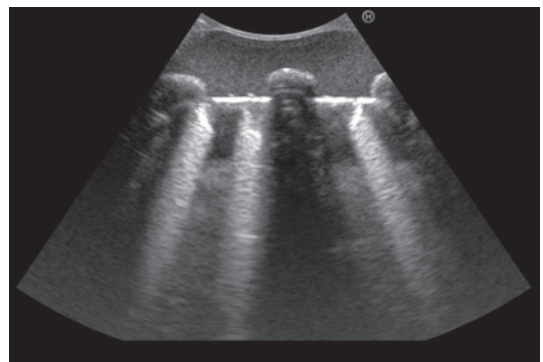
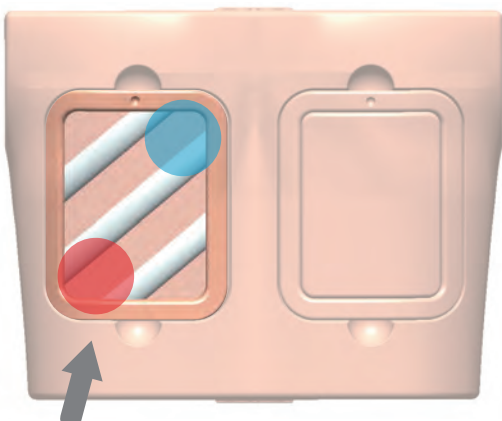
1 A-lines (Normal)

Right cube A-LINE in all area



2 B-lines (few)

left cube

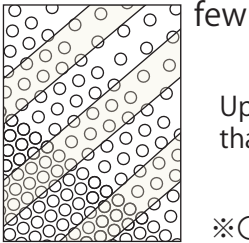
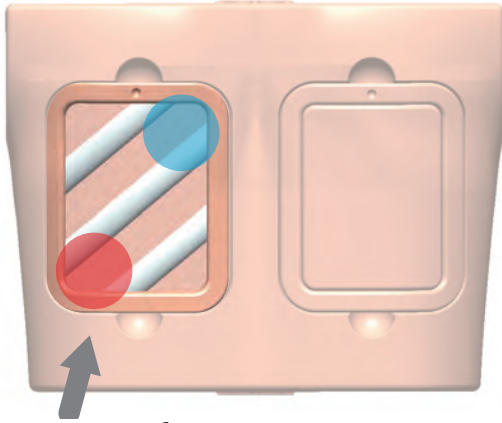


few
Upper right side (blue) has more BLINES than lower left side (red)

※○ sign represents the beam

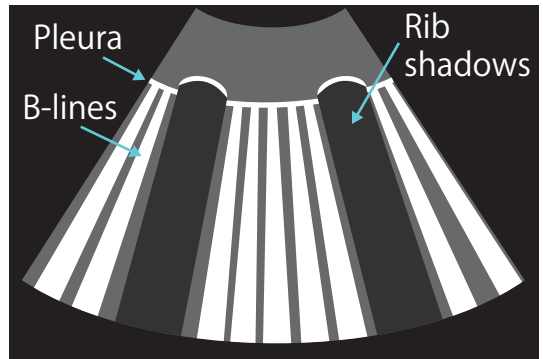
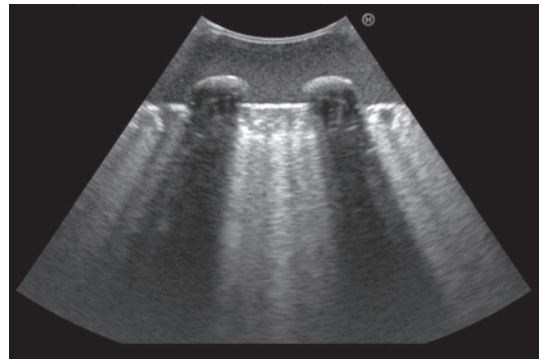
3 B-lines (many)

Left cube



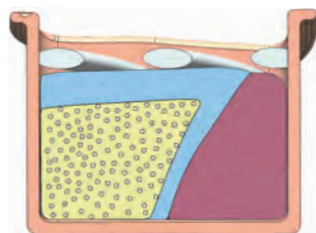
Upper right side (blue) has more BLINES than lower left side (red)

※○ sign represents the beam

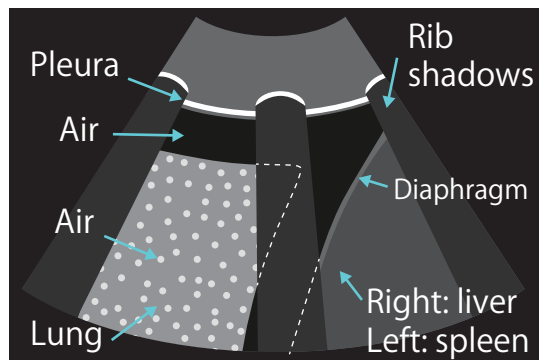
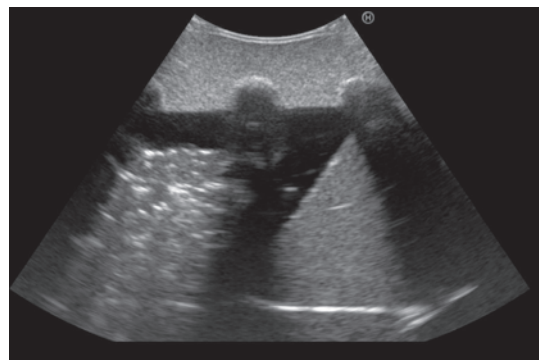


4 Pneumonia and pleural effusion

Right cube pneumonia image close to atelectasis



Cross section





Caution

Do not mark on the phantom with pen or leave printed materials contacted on its surface.
Ink marks on the phantom will be irremovable.

KYOTO KAGAKU co.,LTD

URL:<http://www.kyotokagaku.com> e-mail:rw-kyoto@kyotokagaku.co.jp

Worldwide Inquiries & Ordering

Kyotokagaku Head Office and Factories:

15 Kitanechoya-cho, Fushimi-ku, Kyoto, 612-8388, JAPAN

Tel: +81-75-605-2510 Fax: +81-75-605-2519

Kyotokagaku America Inc. : USA, Canada, and South America

3109 Lomita Boulevard, Torrance, CA 90505-5108, USA

Tel: 1-310-325-8860 Fax: 1-310-325-8867