

PH-82 | 41954-000

Dynamic Cardiac CT Phantom SKK II

CT



For evaluation and research in ECG gated cardiac CT

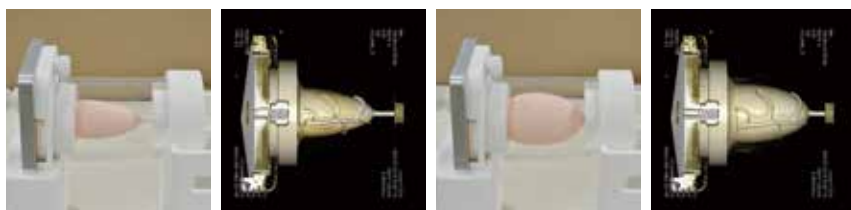


SHOW MORE!



FEATURES

- | The phantom represents physical movement and volumetric change of the left ventricle
- | The heart phantom is made of human tissue substitute material for CT
- | Coronary arteries' variation includes stenosis, contrast enhances and anatomical vessels
- | The phantom generates pulses that are synchronized with the cardiac movement for ECG gating
- | Controllable parameters; pulse rate (30-120 bpm) and ejection volume (0-100%)
- | Three kinds of arrhythmic modes
- | Operation with the tablet PC is simple and easy



APPLICATIONS

- | Measurement of the left ventricle volumetric change
- | Image quality evaluation of coronary arteries



variations of vessels
*the case for the vessels is not included.

DESCRIPTIONS

SET INCLUDES

1 drive unit	1 set of simulated coronary arteries
1 heart phantom	1 controller
1 protective cover	1 storage case

PUBLICATION REFERENCES

N.Nitta, et al Efficacy of ECG gating for lung CT imaging in evaluating pulmonary nodule: Fundamental experiment with a newly developed pulsating cardiac phantom, ECR 2006 C-207 Poster, doi: 10.1594/ECR06/C-207