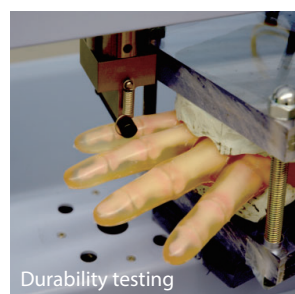
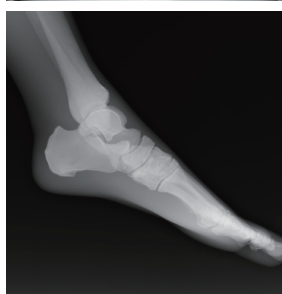
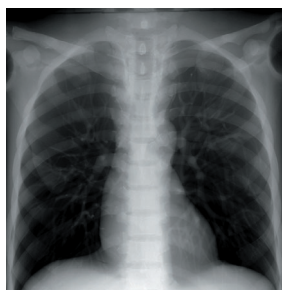


PH-60 | 41925-000

Tough Whole Body Phantom "PBU-90 RUGGED"



Designed for rough handling, improved durability and less maintenance



FEATURES

- | Radiology absorption and HU number approximate to human body.
- | Main joints have close-to-human articulation
- | Phantom can be disassembled into 10 individual parts

APPLICATIONS

- | Plain X-ray
- | Basic patient positioning
- | Basic CT

PBU-90 allows training scenarios that involve rough handling. Details of the bones in the hands and the feet are simplified compared to those of PBU-50/60 for increased durability.

ANATOMY

skull / spine / clavicles / scapulae / ribs / sternum / coxal bones / lungs with pulmonary vessels / trachea (up to primary bronchi) / heart / liver with portal and hepatic veins / kidneys / humerus / antebrachial bone / bones of hand / femur / patella / lower leg bone / bones of foot

Position of Hands and feet

- left foot : plantar flexion
- right foot : dorsiflexion
- left hand : aligned fingers
- right hand : spread fingers

DESCRIPTIONS

SET INCLUDES

- 1 whole body phantom
- 1 flat head screwdriver
- 1 hand -fixture belt

SPECIFICATIONS

Phantom height: 165 cm / 65 in
 Phantom weight: 50 kg / 110 lb

Packing size: W92×D57×H38 cm / W36×D22×H15 in
 W90×D63×H22 cm / W35×D25×H8.7 in
 W89×D57×H16 cm / W35×D22×H6.3 in

Packing weight: 80 kg / 176 lb

MATERIALS

Soft tissue: urethane based resin (density: 1.12)
 *Phantom has no metal parts or liquid structure

OPTIONAL PARTS

- 41363-070 storage cases (consist of 2 boxes)
- 41350-200-16 body plates for PH-2/2B (BMI 32)
- 41350-200-17 body plates for PH-2/2B (BMI 40)

Storage case P.31 ▶

