

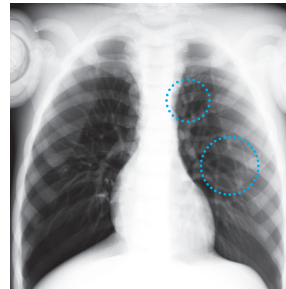
PH-2D | 41350-500

Bone Fracture Pediatric Phantom "PBU-70B"

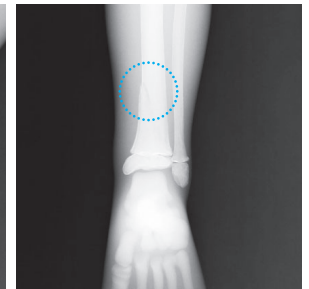
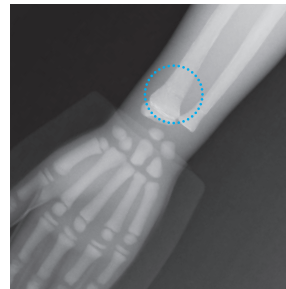


Improve skills in detecting bone fractures in children and cultivate awareness of child maltreatment.

ANTHROPOMORPHIC PHANTOMS



SHOW MORE!



FEATURES

- | Training in pediatric radiography can be enriched with clear and subtle bone fractures
- | Typical fractures resulting from child abuse are also included
- | Radiology absorption and HU number approximate to human body
- | Main joints have close-to-human articulation
- | Phantom can be disassembled into 10 individual parts

APPLICATIONS

- | Plain X-ray
- | CT
- | Basic patient positioning
- | Radiographic interpretation

CONCEPT and ANATOMY - Is there sign of abuse?

Child maltreatment

Children around the world are victims to domestic violence and abuse, yet the problem is often overlooked. Noticing the signs of an abusive fracture of a child is the first step to putting an end to these maltreatments. This phantom has been designed and developed to cultivate such observation skills in future radiologists and radiographers.

Signs of callus	A number of callus examples can be a result of abusive treatment. This particular model contains calluses in the wound healing phase 5.
Supracondylar humerus fracture	A supracondylar humerus fracture on the distal humerus above the epicondyles and is a fracture commonly observed in children, accounting for approximately 20%.
Spiral fracture	Certain causes of non-accidental pediatric injuries, such as spiral fractures, include maltreatment stimulated by anger or distress.
Back, scapula and rib fractures	Rib fractures close to the vertebrae may be potential indicators of the child being thrown.
Skull fractures	A linear skull fracture may be another indication of child maltreatment. At times, fractures display better on x-ray scans than CT imaging.

DESCRIPTIONS

SET INCLUDES

- 1 pediatric whole body phantom
- 1 hand fixture belt
- 1 screwdriver

SPECIFICATIONS

Phantom height:
110 cm / 43.3 in
Phantom weight:
20 kg / 44 lb
Packing size:
W86×D60×H32 cm
W33.8×D23.6×H12.6 in

REPLACEMENT PARTS

- 41350-500-01 Head for PH-2D with head stand
- 41350-500-02 Forearm-hand left for PH-2D (Closed fingers)
- 41350-500-03 Upper Arm left for PH-2D
- 41350-500-04 Trunk for PH-2D
- 41350-500-05 Thigh left for PH-2D
- 41350-500-06 Leg and foot left for PH-2D

MATERIALS

Soft tissue: urethane based resin (density: 1.06)
Synthetic bone: epoxy resin (density: 1.31)
Skull: epoxy resin (density: 1.11)
*Phantom has no metal parts or liquid structure

OPTIONAL PARTS

- 41363-080 storage case for PH-2C / 2D

PUBLICATION REFERENCES

L. J. O. Lanca¹, M. W. Bowdler, J. Creedon, V. Dayer, N. Stensholt, V. Stuivenberg, S. Pinhao¹, M. Visser, J. Jorge, Paediatric phantom dose study using digital radiography with variation of exposure parameters and filtration ECR2018 C-0986 DOI: 10.1594/ecr2018/C-0986

