



ULTRASOUND PHANTOMS

PRODUCT CATALOG

Vol. UP-2

For optimal application of ultrasound in medicine

Kyoto Kagaku started preparing for coming age of medical ultrasound as early as turning of the century. At the beginning, there was two streams to pursuit: development of material for ultrasound phantom that is not only close to human tissue under ultrasound but also stable and long-life, construction of three-dimensional anatomical representation that facilitate improving interpretation skills of trainees.

With the passage of time, application of ultrasound in medicine has developed and also the phantoms. Now Kyoto Kagaku phantoms cover the field of QA, training in examination and ultrasound guided procedures, and serving the range of health care specialties.



Photos courtesy of Adventist University of Health Sciences

Our ultrasound phantoms are presented at exhibitions such as RSNA, ECR, AIUM, SDMS and IMSH.

ULTRASOUND PHANTOMS PRODUCT CATALOG

Vol. UP-2

CONTENTS

<p>US-7 α, B P.4-  NEW</p> <p>Fetus Ultrasound Examination Phantom SPACE FAN-ST</p>	<p>US-10,10A-D P.6- </p> <p>Female Pelvic Ultrasound Phantom</p>	<p>US-6 P.8 </p> <p>Breast Ultrasound Examination Phantom BREAST FAN</p>	<p>US-9 P.9 </p> <p>Ultrasound-Guided Breast Biopsy Phantom</p>	<p>US-14a/b P.10 </p> <p>Ultrasound Neonatal Head Phantoms</p>	Ob-Gyn / Pediatrics
<p>US-13 P.11 </p> <p>Infant Hip Sonography Training Phantom</p>	<p>US-8 P.12 </p> <p>Pediatric FAST/Acute Abdomen Phantom</p>	<p>US-5 P.13 </p> <p>FAST / Acute Abdomen Phantom FAST/ER FAN</p>	<p>US-1B P.14 </p> <p>Ultrasound Examination Training Phantom ABDFAN</p>	<p>US-1 P.15 </p> <p>Ultrasound Examination Training Phantom ECHOZY</p>	
<p>US-22 P.16  NEW</p> <p>Dual Modality Human Abdomen Phantom (CT, Ultrasound)</p>	<p>US-3 P.17 </p> <p>Abdominal Intraoperative & Laparoscopic Ultrasound Phantom IOUSFAN</p>				Abdomen
<p>US-16, 16A P.18 </p> <p>Intradermal Urine Volume Measurement Phantom</p>	<p>US-23 P.19  NEW</p> <p>Rectal and Bladder Ultrasound Phantom</p>	<p>US-11 P.20 </p> <p>Scrotal Ultrasound Phantom</p>	<p>MW63 P.21 </p> <p>Pressure Sores Simulator</p>		
<p>US-21 P.22  NEW</p> <p>DVT (Deep Vein Thrombosis) Phantom</p>	<p>US-17 P.22 </p> <p>Rheumatoid Phantom</p>	<p>US-19 P.23  NEW</p> <p>Lung Ultrasound Training Phantom ECHOLUNG</p>			Limbs/Lungs
<p>US-20 P.24 </p> <p>Ultrasound Guided Tube Feeding Phantom</p>	<p>US-25 P.25  NEW</p> <p>Thyroid Biopsy Phantom</p>	<p>MW82 P.26  NEW</p> <p>Femoral Arterial Puncture Trainer</p>	<p>M99 P.27  NEW</p> <p>Ultrasound-Guided Arterial Puncture Training Pad</p>	<p>MW4/MW4A/ MW15/MW17 P.28- </p> <p>Ultrasound-Guided Thoracentesis/ Pericardiocentesis Simulators</p>	
<p>M93C P.30 </p> <p>CVC Insertion Simulator III</p>	<p>M93UB P.31 </p> <p>CVC Insertion Simulator II</p>	<p>MW18 P.32 </p> <p>Ultrasound-Guided PICC Training Simulator</p>	<p>M93B P.33 </p> <p>Introductory Ultrasound Training Block REAL VESSEL</p>	<p>M43E P.34 </p> <p>Ultrasound Compatible Lumbar Puncture/ Epidural Simulator</p>	Ultrasound-Guided Procedures
<p>US-24 P.35  NEW</p> <p>Elementary Cubic Phantom BLACKCUBE</p>	<p>US-18 P.36 </p> <p>Fundamental Ultrasound Phantom</p>	<p>US-4 P.36 </p> <p>Breast Ultrasound Phantom</p>	<p>US-4B P.37 </p> <p>Small Parts Basic QA Phantom</p>	<p>US-2 P.37 </p> <p>Ultrasound QA Phantom</p>	

Features of Ultrasound Phantom Materials

P.38

Examples of custom made phantoms

P.39

Legend

 allows for ultrasound imaging  skin tone variation is available

US-7 α

41905-999



Fetus Ultrasound Examination Phantom SPACE FAN-ST

US-7B

41905-100

NEW

Fetus Ultrasound Examination Phantom SPACE FAN-ST Heart

Now upgraded for fetal echocardiography training; Staple phantom for hands-on practice in second trimester screening

Includes a 23-week fetus with detailed anatomy which covers landmarks for assessment of gestational age in second trimester

Product Supervision

Kiyoko Kabeyama RN, RM, PhD
Professor Midwifery & Women's Health, School of Human Health
Science, Graduate School of Medicine, Kyoto University

Haruto Egawa, PhD
National Hospital Organization Kyoto Medical Center
Department of Obstetrics, Head Physician or Medical Director



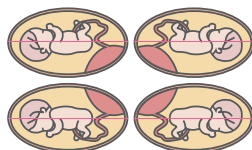
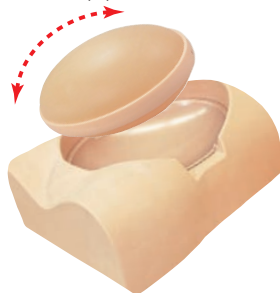
Photos courtesy of Adventist University of Health Sciences

FEATURES

- 1 | The oval-shaped phantom abdomen can be set into four different positions
- 2 | The fetus includes full skeletal structures and key organs
- 3 | Includes an educational DVD and a fetus demonstration model for comprehensive learning
- 4 | Includes a 23-week fetus

US-7B: added features

- 1 | Detailed heart anatomy for fetal echocardiography
- 2 | Three times enlarged fetal heart model that demonstrates three key planes, 3VV, 3VTV and 4CV.



The oval-shaped phantom abdomen can be set in four different positions

SKILLS

- | Fetal size assessment: BPD, AD, AC and FL
- | Measurement of amniotic fluid volume
- | Determination of fetus presentation (cephalic or breech)
- | Assessment of each body part
 - Head: skull and brain
 - Spine and limbs
 - Cardiac chambers, blood vessels and lungs
- | Assessment of umbilical cord and placenta position
- | Determination of sex (This phantom represents a male fetus)

US-7B: added skills

- | Assessment of fetal heart size and cardiac axis
- | Assessment of fetal heart vessels.
- | Measurement and calculation of TCD and CTAR

DESCRIPTIONS

SPECIFICATIONS

Torso size: W40 x D31 x H22 cm
W15.7 x D12.2 x H8.7 in.

Phantom size: W30 x D21 x H15 cm
W11.8 x D8.3 x H5.9 in.

Weight: 7.3kg / 13 lbs

MATERIALS

Soft resin, Polyurethane elastomer
Latex free

REPAIR

41905-000-99 recoating of US-7a/7B

* Ultrasound scanner is not included.

SET INCLUDES

US-7a SPACE FAN-ST (41905-999)	US-7B SPACE FAN-ST (41905-100)
1 mother body torso	1 mother body torso
1 ultrasound pregnant uterus phantom (Space-FAN ST)	1 ultrasound pregnant uterus phantom (Space-FAN ST Heart)
1 fetus demonstration model	1 fetus demonstration model
1 storage case	1 fetal heart model
1 tutorial manual (DVD)	1 storage case
1 talcum powder	1 tutorial manual (DVD)
	1 talcum powder

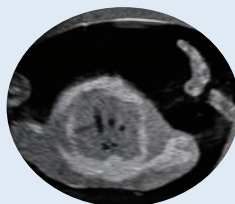
US-7B SPACE FAN-ST Heart for Fetal Echocardiography
features detailed cardiac anatomy, ideal for fetal echocardiography training



aortic arch



three-vessel view (3TV)



three-vessel view (3VV)



four-chamber view (4CV)



FL



UV, Placenta



US-7a SPACE FAN-ST for second trimester screening



BPD

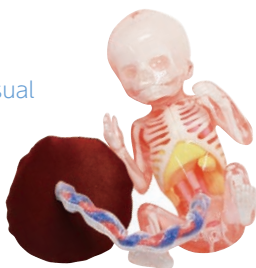


AC/AD

Fetus Demonstration Model

Life-sized model

Life-size fetus model
for demonstration and visual
understanding



Fetus Heart Model

Three times enlarged model

Comes apart into 5 pieces according to the
basic planes in fetal echocardiography



NEW

ANATOMY

Uterus

- | amniotic fluid
- | placenta
- | umbilical cord

Fetus

- | skeletal structure
- | brain with septum lucidum
- | lateral ventricles and cerebellum
- | heart with four chambers
- | lungs
- | spleen
- | bladder
- | stomach
- | liver
- | kidneys
- | aorta
- | umbilical vein
- | umbilical artery
- | external genitalia

Fetal heart of US-7B

- | aortic arch
- | trachea
- | ascending artery
- | superior vena cava
- | descending artery
- | atrial septum
- | ventricular septum
- | foramen ovale



Ultrasound examination for
MW48 Hana (11425-140)



Female Pelvic Ultrasound Phantom

Practice both transvaginal and transabdominal ultrasound procedures in one

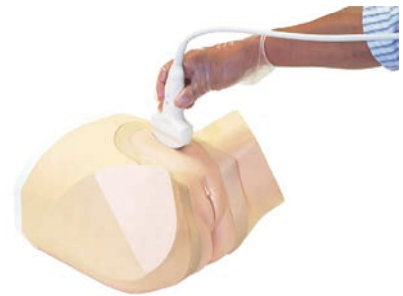
Newly added 10-week- pregnancy, IUD and follicular phase units support thorough training in Obs/gyn ultrasound

Product Supervision

Charlotte Henningsen, MS, RT(R), RDMS, RVT,
FSDMS, FAIUM
Chair & Professor - Sonography Department
Adventist University of Health Sciences



transvaginal



transabdominal

FEATURES

- 1 | Compatible with actual ultrasound transducer
- 2 | Six types of interchangeable phantom inserts with different pathologies
- 3 | Realistic view of female external genital
- 4 | Excellent ultrasound image quality

SKILLS

- | Handling and manipulation of transvaginal and transabdominal transducers
- | Interpretation of sonogram
- | Visualization and localization of anatomies and pathologies

ANATOMY

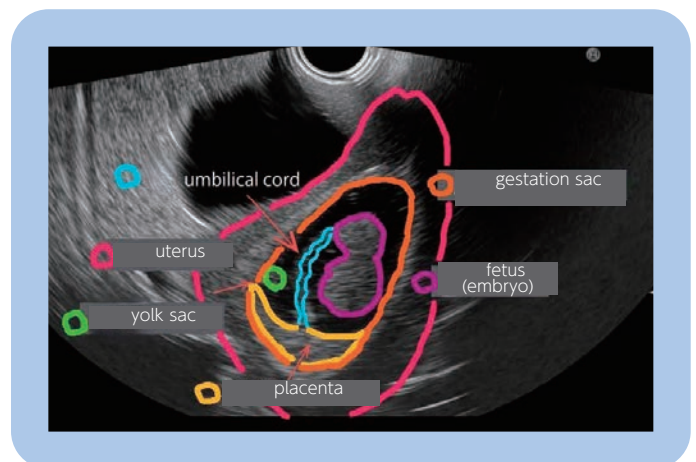
Common for all units

- | uterus
- | urinary bladder
- | pelvic bone
- | ovaries
- | follicles
- | vagina
- | rectum

Pregnancy units

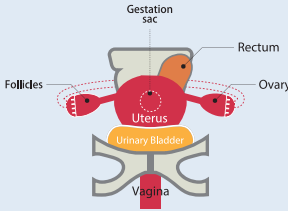
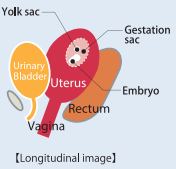

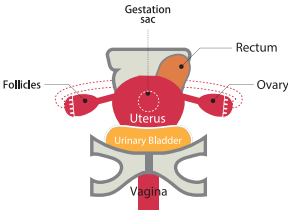
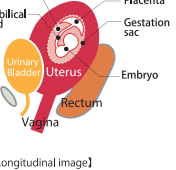

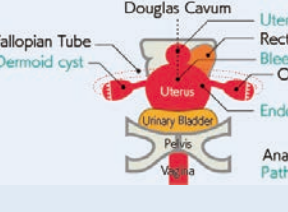


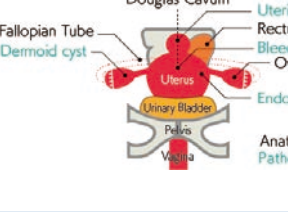
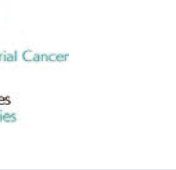
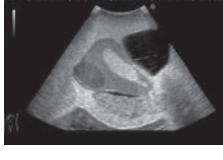
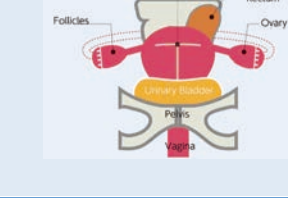
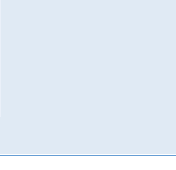

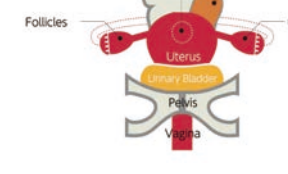


- | gestation sac
- | yolk sac
- | embryo
- | placenta
- | follicles
- | umbilical cord (10-week)

longitudinal view of the pregnancy (10-week unit on transvaginal scan)



For variations please refer the website:
<https://www.kyotokagaku.com/en/product/introduction/us-10/>

KEY FEATURES

Six variations of training units	Anatomy, findings and pathology	
Normal pregnancy (7-week) unit	  	
Normal pregnancy (10-week) unit	  	
Ectopic pregnancy unit • ectopic pregnancy • bleeding at Douglas cavity	  	
Pathological unit • endometrial abnormality • dermoid cyst • uterine fibroid • bleeding at Douglas cavity	  	
IUD unit	  	
NEW Follicular phase unit	  	

DESCRIPTIONS

REPLACEMENT PARTS

- 41909-030 ultrasound pathology unit
- 41909-040 ultrasound ectopic pregnancy unit
- 41909-050 ultrasound first trimester pregnancy unit (7W)
- 41909-060 skin for US-10 / 10A / 10B
- 41909-070 ultrasound first trimester pregnancy unit (10W)

- 41909-080 IUD unit
- 41909-090 follicular phase unit
- 41909-300 lower torso with accessories

SPECIFICATIONS

Torso size: W34 x D33 x H24 cm
W13.5 x D13 x H9.5 in.

weight: 6.9kg / 15.2 lbs

MATERIALS

Soft resin, Polyurethane elastomer
Latex free

* Ultrasound scanner is not included.



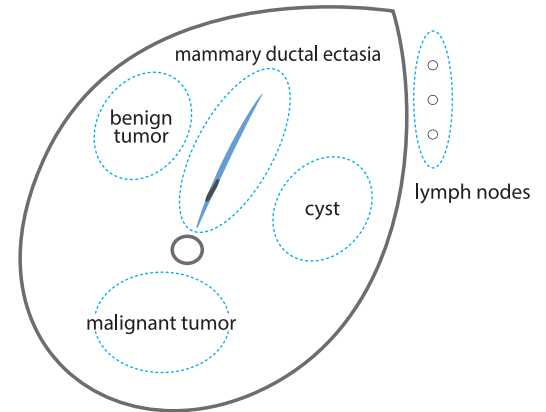
Breast Ultrasound Examination Phantom BREAST FAN

Unique phantom for basic breast ultrasound examination

Simulated targets with different echogenicities are embedded in the phantom's mammary gland

Product Supervision

Tokiko Endo, MD, PhD
Director of Department of Advanced Diagnosis,
Clinical Research Center,
National Hospital Organization Nagoya Medical Center
Director of Department of Radiology,
National Hospital Organization Nagoya Medical Center



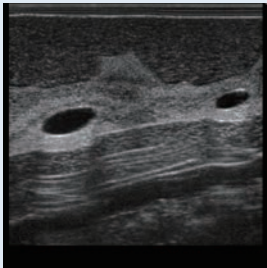
FEATURES

- 1 | State-of-the-art breast ultrasound phantom with anatomy
- 2 | Skills required for ultrasound breast screening can be greatly advanced with practice
- 3 | Excellent ultrasound image quality

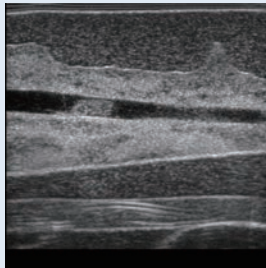
SKILLS

- | Systematic full breast scanning
- | Visualization of key anatomical landmarks
- | Tracking of galactophore
- | Visualization and differentiation of typical pathologies
- | Localization and measurement of cysts and tumor

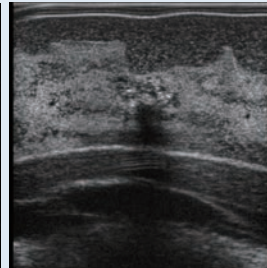
IMAGES



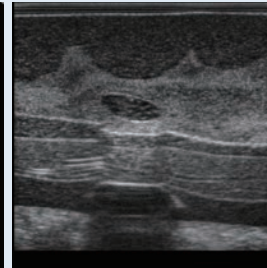
Cyst



Mammary ductal ectasia



Malignant tumor



Benign tumor

ANATOMY

- | subcutaneous adipose
- | mammary gland
- | galactophore
- | cooper's ligament
- | retromammary adipose
- | costae
- | clavicle
- | pectoralis major
- | lung
- | lymph nodes at axilla

DESCRIPTIONS

SPECIFICATIONS

Size: W26 x D38 x H11 cm, W10.2 x D15 x H4.3 in. (breast)
W33 x D45 cm, W13 x D17.7 in. (base plate)

MATERIALS

Polyurethane elastomer
Latex free

SET INCLUDES

- | | |
|------------------|-------------------------|
| 1 breast phantom | 1 tutorial manual (DVD) |
| 1 talcum powder | 1 instruction manual |
| 1 storage case | |

Weight: 7kg / 15.4lbs

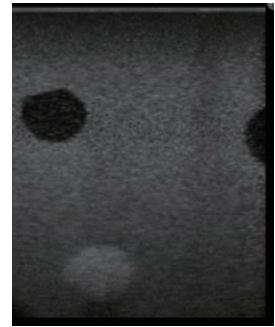
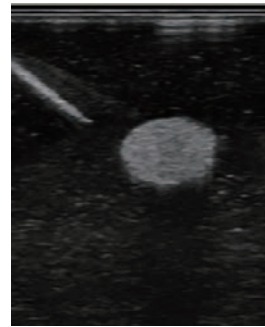
* Ultrasound scanner is not included.



Ultrasound-Guided Breast Biopsy Phantom

Enhance confidence in performing safe and accurate breast biopsies

Combine two types of breast phantoms for step-by-step development of skills in needle biopsy



FEATURES

- 1 | Fine Needle Aspiration Biopsy (FNAB), Core Needle Biopsy (CNB) and Mammotome biopsy can be performed under ultrasound guidance.
- 2 | Realistic breast tissues that simulate the softness and resistance of the mammary gland.
- 3 | Targets are colored to confirm successful sampling.
- 4 | Targets are embedded in three levels for training in needle access in different angles and depth.
- 5 | Transparent and opaque phantoms provide level variations.
- 6 | Inexpensive and disposable for multiple attempts.

SKILLS

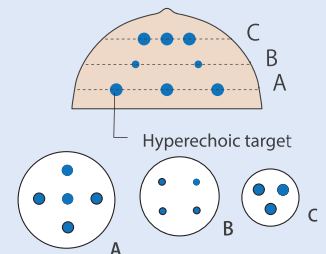
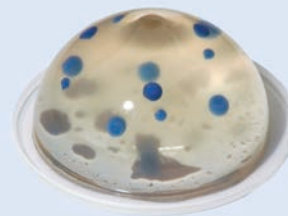
- | Hand-eye coordination in ultrasound biopsy
- | Localization of targets under ultrasound guidance
- | Sampling of target



KEY FEATURES

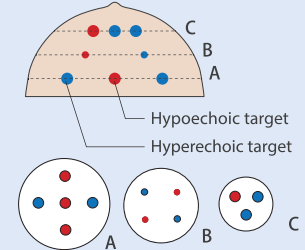
Basic (Transparent)

Hand-eye coordination



Advanced (Opaque)

Acquisition of skills in safe and reliable needle biopsy
Contains both hyperechoic and hypoechoic targets



DESCRIPTIONS

SPECIFICATIONS

Size: 16 dia. x H8 cm / 6.3 dia. x H3.2 in. each Weight: 0.75kg / 1.7 lbs each
Target size: 6 and 10mm dia. each
Target type and number:

Basic Phantom: 12 x hyperechoic targets (blue)
Advance Phantom: 6 x hyperechoic targets (blue)
6 x hypoechoic targets (red)

SET INCLUDES

- 1 | pair of phantoms
- 1 | instruction manual

SET VARIATIONS

Duo set: 11387-000	transparent + opaque type
Transparent set: 11387-100	1 pair of transparent type
Opaque set: 11387-200	1 pair of opaque type

MATERIALS

Hydrogel
Latex free

* Ultrasound scanner is not included.

US-14a

41917-000

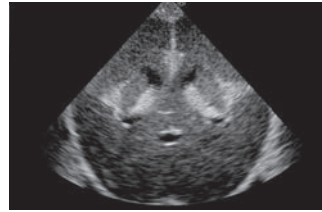


Ultrasound Neonatal Head Phantom (Normal Type)

World's first ultrasound neonatal head phantom with key anatomies

Product Supervision

Charlotte Henningsen,
MS, RT(R), RDMS, RVT, FSDMS, FAIUM
Chair & Professor - Sonography Department
Adventist University of Health Sciences



FEATURES

Cranial or head ultrasound is one of the most difficult scanning skills, and there are few opportunities for training. This head phantom features an accurate depiction of a newborn's cerebral anatomy, and facilitates a realistic user experience with its life-like soft touch

SKILLS

- Scanning of brain anatomy in sagittal (angled parasagittal), coronal and transverse planes via any fontanel
- Palpation of anterior, posterior and mastoid fontanels

ANATOMY

- | | | |
|--------------------|-------------------|------------------|
| skull | cerebrum | third ventricle |
| anterior fontanel | cerebellum | fourth ventricle |
| posterior fontanel | brain-stem | septum lucidum |
| mastoid fontanels | lateral ventricle | |

DESCRIPTIONS

SPECIFICATIONS

Size: W13 x D13 x H17 cm
W5.1 x D5.1 x H6.7 in.

Weight: 1.5kg / 3.3lbs

SET INCLUDES

- | | |
|---|--------------------|
| 1 | ultrasound phantom |
| 1 | pillow |
| 1 | talcum powder |
| 1 | storage case |
| 1 | instruction manual |

MATERIALS

Polyurethane elastomer
Latex free

REPAIR

41917-000-99 recoating of US-14a

* Ultrasound scanner is not included.

US-14b

41915-000



Ultrasound Neonatal Head Phantom (Abnormal Type)

World's first ultrasound neonatal head phantom with hydrocephalus

Product Supervision

Charlotte Henningsen,
MS, RT(R), RDMS, RVT, FSDMS, FAIUM
Chair & Professor - Sonography Department
Adventist University of Health Sciences



FEATURES

This head phantom is designed to demonstrate Hydrocephalus. The shape of the skull is altered due to intracranial pressure

SKILLS

- Scanning of brain anatomy in sagittal (angled parasagittal), coronal and transverse planes via any fontanel
- Palpation of fontanels

ANATOMY

- | |
|---------------------------------|
| skull |
| anterior fontanel |
| posterior fontanel |
| hypertrophied lateral ventricle |

DESCRIPTIONS

SPECIFICATIONS

Size: W13 x D14 x H20 cm
W5.1 x D5.5 x H7.9 in.

Weight: 1.5kg / 3.3lbs

SET INCLUDES

- | | |
|---|--------------------|
| 1 | ultrasound phantom |
| 1 | pillow |
| 1 | talcum powder |
| 1 | storage case |
| 1 | instruction manual |

MATERIALS

Polyurethane elastomer
Latex free

REPAIR

41915-000-99 recoating of US-14b

* Ultrasound scanner is not included.



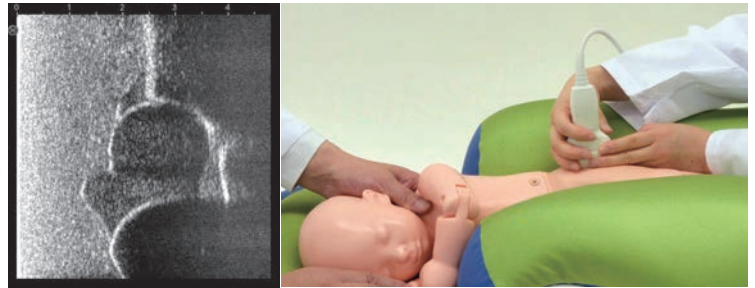
Infant Hip Sonography Training Phantom

World's first infant hip sonography phantom Best tool to teach Graf's method

Product Supervision

Univ. Prof., h.c., Reinhard Graf, M.D.

This phantom expands training opportunities for pediatricians, radiologists and orthopedists. Before working on real infants, trainees can repetitively practice on this phantom to become familiar with the examination procedures and key points. Using real ultrasound devices, trainees can learn key ultrasound landmarks to identify standard plane for Graf's classification. This is a foundation to acquire skills in handling and positioning of the baby as well as correct positioning of the transducer.



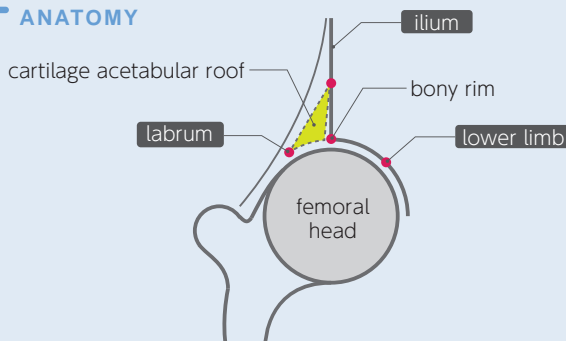
FEATURES

- 1 | The market's only training phantom for hip sonography on a full body manikin of 6-week-old infant
- 2 | Bilateral hips for examination
- 3 | Facilitate anatomical understanding
- 4 | Movable arms to practice supporting and repositioning of the infant

SKILLS

- | Setting and preparation for hip sonography
- | Changing the position of the infant
- | Communication and interaction with infant's guardian
- | Correct use and positioning of the transducer
- | Recognition of landmarks for hip sonography
- | Visualization of standard, anterior and posterior planes
- | Interpretation and morphological classification of the sonogram

ANATOMY



KEY LANDMARKS

- | chondro-osseous junction
- | femoral head
- | synovial membrane
- | joint capsule
- | acetabular labrum
- | cartilaginous portion of the acetabular roof
- | bony promontory of the superior bony acetabular rim
- | lower margin of the ilium
- | standard plane

DESCRIPTIONS

SPECIFICATIONS

Size: W55 x D25 x H13 cm
W21.6 x D9.8 x H5.1 in.

Weight: 3kg / 6.6lbs

MATERIALS

Polyurethane elastomer
Latex free

SET INCLUDES

- 1 | ultrasound infant phantom
- 1 | talcum powder
- 1 | storage case
- 1 | instruction manual

* Supporting cushion is not included.
* Ultrasound scanner is not included.



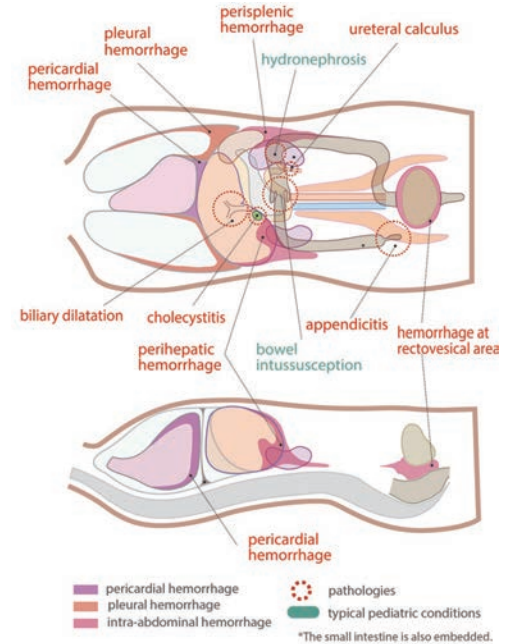
Pediatric FAST/Acute Abdomen Phantom

Ultrasound training for pediatric FAST procedures

This world's first pediatric ultrasound torso phantom provides opportunities of hands-on training in ultrasound examination of a two-year-old patient

Product Supervision

Shunsuke Nosaka, MD, PhD
Director of Radiology
National Medical Center for Children and Mothers



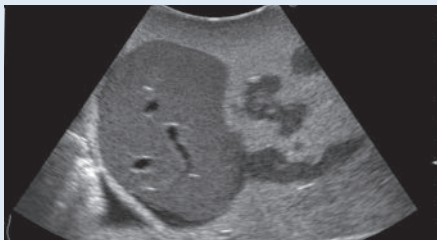
FEATURES

- 1 | Thoracoabdominal organs, bone structure and free-fluid for practicing FAST examination procedures
- 2 | Commonly seen pathologies in pediatrics
- 3 | Acquire fundamental pediatric abdominal ultrasound skills, as well as FAST/Acute sonography skills

SKILLS

- | FAST procedures:
Internal hemorrhage at perihepatic, perisplenic, pelvis, and pericardium area
- | Sonography for acute pediatric patient:
Bowel intussusception, appendicitis and biliary dilatation

KEY FEATURES



Pleural hemorrhage



Hydronephrosis



Appendicitis

DESCRIPTIONS

SPECIFICATIONS

Size: W41 x D17 x H15 cm
W16.1 x D6.7 x H5.9 in.

Weight: 7kg / 15.4lbs

SET INCLUDES

- 1 | ultrasound phantom
- 1 | talcum powder
- 1 | storage case
- 1 | tutorial manual (DVD)
- 1 | instruction manual

MATERIALS

Polyurethane elastomer
Latex free

REPAIR

41906-000-99 recoating of US-8

* Ultrasound scanner is not included.



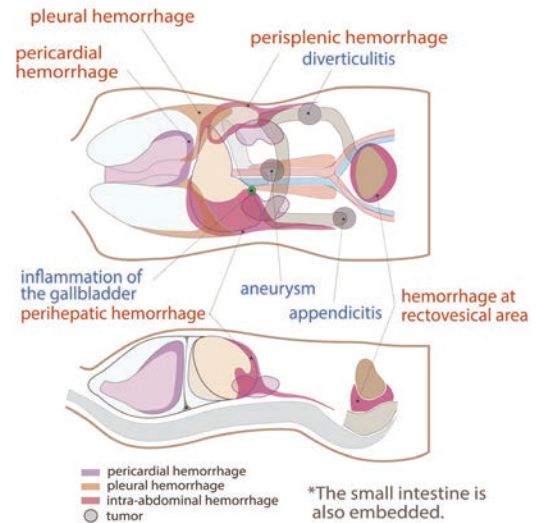
FAST/Acute Abdomen Phantom FAST/ER FAN

Conduct "FAST" assessment to save a trauma patient!

Product Supervision

Junji Machi, MD, PhD
University of Hawaii at Manoa and Kuakini Medical Center

FAST/ER FAN provides simulated training in FAST
(Focused Assessment with Sonography for Trauma);
an ultrasound examination directed at detection of the presence of free fluid in
trauma patients



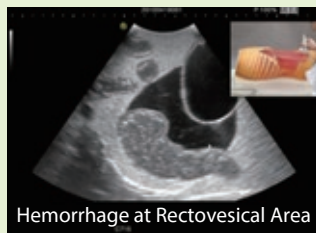
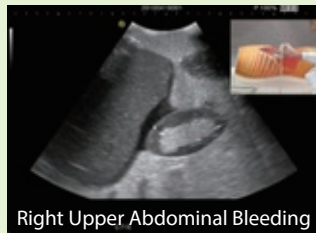
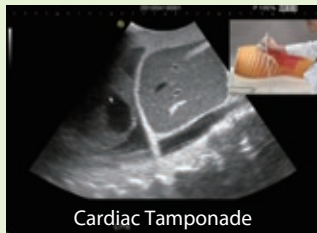
FEATURES

- 1 | An innovative phantom for repetitive training of FAST as an adjunct to the ATLS primary survey
- 2 | Pathologies include cholecystitis, an aortic aneurysm and a lesion on the colon

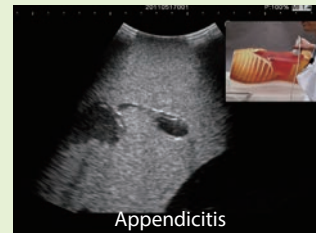
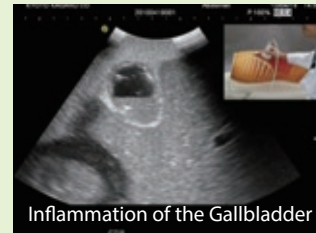
SKILLS

- | Internal hemorrhage at perihepatic, perisplenic, pelvis and pericardium area
- | Sonography for acute patients

FAST



Acute abdomen



DESCRIPTIONS

SPECIFICATIONS

Size: W62 x D30 x H25 cm
W24.4 x D11.8 x H9.8 in. Weight: 30kg / 66lbs

SET INCLUDES

- 1 | ultrasound phantom
- 1 | tutorial manual (DVD)
- 1 | talcum powder
- 1 | instruction manual

MATERIALS

Polyurethane elastomer
Latex free

REPAIR

41903-000-99 recoating of US-5

*Ultrasound scanner is not included.



Ultrasound Examination Training Phantom ABDFAN

Abdominal ultrasound phantom with pathologies

Unique high-fidelity abdominal ultrasound phantom that facilitates effective training compatible with your own clinical devices

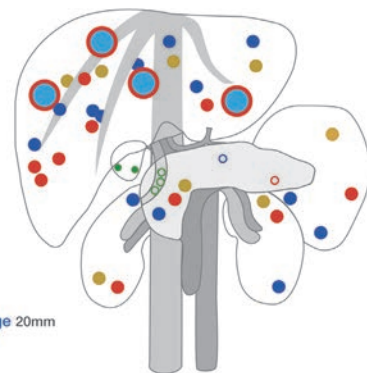
Product Supervision

Junji Machi, MD, PhD
University of Hawaii at Manoa and Kuakini Medical Center

Simulated lesions in liver, pancreas, kidney, spleen, gallbladder



- Simulated stone 3mm
- Simulated stone 5mm
- Simulated cysts 3mm
- Simulated cysts 10mm
- Hypochoic 10mm
- Simulated tumors 3mm
- Simulated tumors 10mm
- Simulated tumors with double edge 20mm



Full set includes anatomical model ECHO-ZOU (11224-000)

FEATURES

- 1 | Detailed hepatobiliary, pancreatic and other abdominal anatomy
- 2 | Couinaud's eight hepatic segments can be localized
- 3 | ABDFAN has various simulated lesions to provide wider training variety

SKILLS

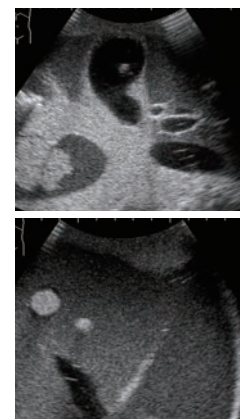
- | Basics of abdominal sonography:
 - Cross sections and sonographic anatomy
 - Sonographic demonstration of each individual organ
 - Localization of Couinaud's hepatic segments

Anatomy

- | Liver
(segmental anatomy, portal and hepatic venous systems, ligamentum teres and ligamentum venosum)
- | Biliary tract
(gallbladder, cystic duct, intrahepatic and extrahepatic bile ducts)
- | Pancreas (pancreatic duct)
- | Spleen / kidneys
- | Detailed vascular structures
(aorta, vena cava, celiac artery and its branches, portal vein and its branches, superior mesenteric vessels, renal vessels, and more)

Pathologies

- | Hepatic lesions (cystic and solid)
- | Gallbladder and bile duct stones
- | Pancreatic tumors
(one invading the portal vein)
- | Splenic lesions
- | Lesions in both kidneys
- | Left adrenal tumor



DESCRIPTIONS

SPECIFICATIONS

Size: W29 x D19 x H31cm / W11.4 x D7 x H12.2 in. Weight: 12kg / 26.5lbs

MATERIALS

Polyurethane elastomer
Latex free

REPAIR

41900-030-99 recoating of US-1B

SET INCLUDES

US-1B (41900-030) ABDFAN	US-1B (41900-100) ABDFAN full set
1 ultrasound phantom ABDFAN	1 ultrasound phantom ABDFAN
1 positioning pillow	1 anatomical model ECHO-ZOU
1 talcum powder	1 positioning pillow
1 tutorial manual (DVD)	1 talcum powder
1 storage case	1 tutorial manual (DVD)
1 instruction manual	2 storage cases
	1 instruction manual



Ultrasound Examination Training Phantom ECHOZY

Abdominal ultrasound phantom without pathologies

Unique high-fidelity abdominal ultrasound phantom that facilitates effective training compatible with your own clinical devices

Product Supervision

Dr. Hitoshi Asai, Director
Osaka Kyoiku University, Health Administration Center
Dr. Shigeru Nakamura
Nagayoshi General Hospital, Clinical Examination Department



Full set includes
anatomical model
ECHO-ZOU
(11224-000)

FEATURES

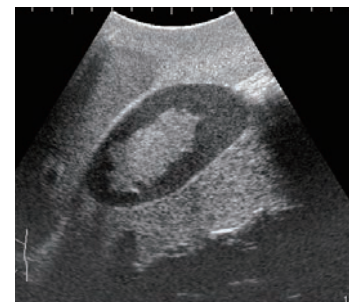
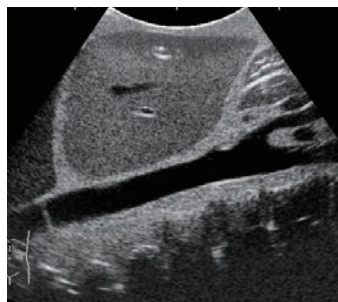
- 1 | Detailed hepatobiliary, pancreatic and other abdominal anatomy
- 2 | Couinaud's eight hepatic segments can be localized

SKILLS

- | Basics of abdominal sonography:
 - Cross sections and sonographic anatomy
 - Sonographic demonstration of each individual organ
 - Localization of Couinaud's hepatic segments

Anatomy

- | Liver
(segmental anatomy, portal and hepatic venous systems, ligamentum teres and ligamentum venosum)
- | Biliary tract
(gallbladder, cystic duct, intrahepatic and extrahepatic bile ducts)
- | Pancreas (pancreatic duct)
- | Spleen / kidneys
- | Detailed vascular structures
(aorta, vena cava, celiac artery and its branches, portal vein and its branches, superior mesenteric vessels, renal vessels, and more)



DESCRIPTIONS

SPECIFICATIONS

Size: W29 x D19 x H31 cm / W11.4 x D7 x H12.2 in. Weight: 12kg / 26.5lbs

MATERIALS

Polyurethane elastomer
Latex free

REPAIR

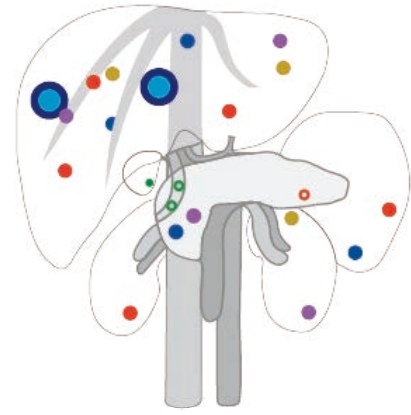
41900-010-99 recoating of US-1

SET INCLUDES

US-1 (41900-010) ECHOZY	US-1 (41900-000) ECHOZY full set
1 ultrasound phantom ECHOZY	1 ultrasound phantom ECHOZY
1 set positioning pillow	1 anatomical model ECHO-ZOU
1 tutorial manual (DVD)	1 positioning pillow
1 talcum powder	1 tutorial manual (DVD)
1 storage case	1 talcum powder
	2 storage cases

Dual Modality Human Abdomen Phantom (CT, Ultrasound)

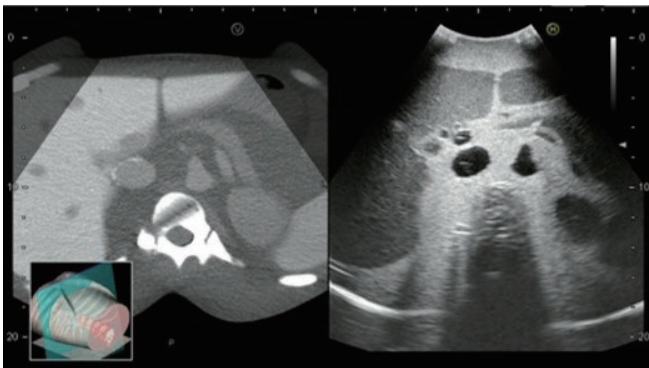
This Multi-Modality Phantom is a suitable item to conduct studies and training of fusion imaging for a wide range of clinical applications (CT & Ultrasound)



[Embedded targets]		Liver HU170	Gall HU120	Pancreas HU90	Spleen HU50	Kidney(R) HU20	Kidney(L) HU30
anechoic	<div style="display: inline-block; width: 10px; height: 10px; background-color: red; border: 1px solid black; margin-right: 5px;"></div> <div style="display: inline-block; width: 10px; height: 10px; background-color: yellow; border: 1px solid black; margin-right: 5px;"></div> <div style="display: inline-block; width: 10px; height: 10px; background-color: green; border: 1px solid black; margin-right: 5px;"></div> <div style="display: inline-block; width: 10px; height: 10px; background-color: blue; border: 1px solid black; margin-right: 5px;"></div> <div style="display: inline-block; width: 10px; height: 10px; background-color: purple; border: 1px solid black;"></div>	3 HU50			1 HU10	1 HU10	
hypoechoic	<div style="display: inline-block; width: 10px; height: 10px; background-color: red; border: 1px solid black; margin-right: 5px;"></div> <div style="display: inline-block; width: 10px; height: 10px; background-color: yellow; border: 1px solid black; margin-right: 5px;"></div> <div style="display: inline-block; width: 10px; height: 10px; background-color: green; border: 1px solid black; margin-right: 5px;"></div> <div style="display: inline-block; width: 10px; height: 10px; background-color: blue; border: 1px solid black; margin-right: 5px;"></div> <div style="display: inline-block; width: 10px; height: 10px; background-color: purple; border: 1px solid black;"></div>	2 HU50					1 HU10
intermediate echogenicity	<div style="display: inline-block; width: 10px; height: 10px; background-color: red; border: 1px solid black; margin-right: 5px;"></div> <div style="display: inline-block; width: 10px; height: 10px; background-color: yellow; border: 1px solid black; margin-right: 5px;"></div> <div style="display: inline-block; width: 10px; height: 10px; background-color: green; border: 1px solid black; margin-right: 5px;"></div> <div style="display: inline-block; width: 10px; height: 10px; background-color: blue; border: 1px solid black; margin-right: 5px;"></div> <div style="display: inline-block; width: 10px; height: 10px; background-color: purple; border: 1px solid black;"></div>	2 HU90		1 HU10			1 HU10
hyperechoic	<div style="display: inline-block; width: 10px; height: 10px; background-color: red; border: 1px solid black; margin-right: 5px;"></div> <div style="display: inline-block; width: 10px; height: 10px; background-color: yellow; border: 1px solid black; margin-right: 5px;"></div> <div style="display: inline-block; width: 10px; height: 10px; background-color: green; border: 1px solid black; margin-right: 5px;"></div> <div style="display: inline-block; width: 10px; height: 10px; background-color: blue; border: 1px solid black; margin-right: 5px;"></div> <div style="display: inline-block; width: 10px; height: 10px; background-color: purple; border: 1px solid black;"></div>	2 HU90		1 HU10			1 HU10
double edge interior: hyperechoic exterior:anechoic	<div style="display: inline-block; width: 10px; height: 10px; background-color: red; border: 1px solid black; margin-right: 5px;"></div> <div style="display: inline-block; width: 10px; height: 10px; background-color: yellow; border: 1px solid black; margin-right: 5px;"></div> <div style="display: inline-block; width: 10px; height: 10px; background-color: green; border: 1px solid black; margin-right: 5px;"></div> <div style="display: inline-block; width: 10px; height: 10px; background-color: blue; border: 1px solid black; margin-right: 5px;"></div> <div style="display: inline-block; width: 10px; height: 10px; background-color: purple; border: 1px solid black;"></div>	2 HU90					
gallstones	<div style="display: inline-block; width: 10px; height: 10px; background-color: red; border: 1px solid black; margin-right: 5px;"></div> <div style="display: inline-block; width: 10px; height: 10px; background-color: yellow; border: 1px solid black; margin-right: 5px;"></div> <div style="display: inline-block; width: 10px; height: 10px; background-color: green; border: 1px solid black; margin-right: 5px;"></div> <div style="display: inline-block; width: 10px; height: 10px; background-color: blue; border: 1px solid black; margin-right: 5px;"></div> <div style="display: inline-block; width: 10px; height: 10px; background-color: purple; border: 1px solid black;"></div>		1 HU170				2 HU170

FEATURES/SKILLS

- 1 | Fusion image generation training
- 2 | Mapping for biopsy (invasive procedures are not possible with this phantom)
- 3 | Surgical planning
- 4 | Radiation therapy planning
- 5 | Training for scanning skills in Ultrasound and CT



Comparison of CT-based simulated ultrasound and real ultrasound

ANATOMY

lung / kidneys (right and left) / gallbladder / aorta / liver (portal vein, bile duct, hepatic artery, hepatic vein) / spleen / pancreas (pancreatic duct) / inferior aorta / spine / ribs

PATHOLOGIES

- | Liver lesions (cysts, solids)
- | Gallbladder and bile duct stones
- | Pancreatic tumors
- | Spleen lesions
- | Left and right kidney lesions

DESCRIPTIONS

SPECIFICATIONS

Size: W29 x D19 x H31 cm Weight: 12 kg/26.5 lbs
W11.4 x D7.5 x H12.2 in.

SET INCLUDES

- 1 dual modality abdominal phantom
- 1 positioning pillow
- 1 talcum powder
- 1 sample CT images (DVD)
- 1 storage case
- 1 instruction manual



Abdominal Intraoperative & Laparoscopic Ultrasound Phantom IOUSFAN

Effective training tool for abdominal intraoperative ultrasound examination

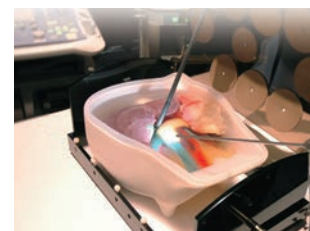
Phantom of abdominal organs to simulate ultrasound examinations during open and laparoscopic surgery

Product Supervision

Junji Machi, MD, PhD
University of Hawaii at Manoa and Kuakini Medical Center



Intraoperative ultrasound



Laparoscopic ultrasound

ANATOMY and PATHOLOGIES

Liver

- | segmental anatomy
- | portal and hepatic venous system
- | ligamentum teres and ligamentum venosum

Biliary Tract

- | gall bladder
- | cystic duct
- | intrahepatic and extrahepatic bile ducts

Pancreas

- | pancreatic duct

Spleen

Kidneys

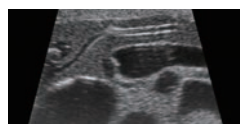
Detailed vascular structures

- | aorta
- | vena cava
- | celiac artery and branches
- | portal vein and branches
- | superior mesenteric vessels
- | renal vessels

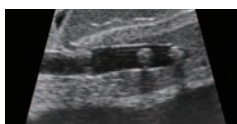
Biliary Stones and Cysts

Solid Tumors in liver, pancreas, spleen and kidneys

- | hypoechoic
- | hyperechoic



Pancreatic head



Bile duct stones



Gallstones

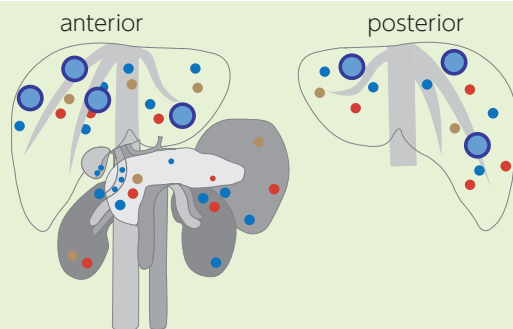
FEATURES

- 1 | Soft phantom materials allow realistic probe manipulation.
- 2 | Various simulated lesions.
- 3 | Detachable stomach and duodenum for various scanning of the bile duct and pancreas.

SKILLS

- | Abdominal intraoperative ultrasound examination
- | Laparoscopic ultrasound examination

Pathologies Sites



- **Simulated cysts**
1 cm / 0.4 in
- **Hypoechoic**
1 cm / 0.4 in
- **Simulated tumors**
1 cm / 0.4 in
- **Simulated tumors with double edge**
2 cm / 0.8 in

DESCRIPTIONS

SPECIFICATIONS

Size: W30 x D38 x H17.5 cm Weight: 5.8kg / 12.8lbs
W11.8 x D15 x H6.9 in.

SET INCLUDES

- 1 upper abdomen ultrasound phantom
- 1 stomach ultrasound phantom
- 1 phantom container
- 1 tutorial manual (DVD)
- 1 instruction manual

MATERIALS

Polyurethane elastomer
Latex free

*Ultrasound scanner is not included.

US-16/16A

41932-000,100



Intravesical Urine Volume Measurement Phantom

Pocket-sized ultrasound is gaining popularity and starting to be utilized more in daily care for examination. This method is preferred as catheterization may cause urinary infection



FEATURES

- 1 | Four interchangeable inserts representing different patient scenarios
- 2 | Palpable pubic bone for ultrasound bladder visualization training using surface anatomical landmarks
- 3 | Home care training components for assessment of severe dehydration, urinary retention, and balloon occlusion
- 4 | Comprehensive urinary care training for recovery of lower urinary tract function for inpatients

SKILLS

- | Handling and manipulation of transducers on bladder ultrasound
- | Scanning the bladder to measure urine volume and findings

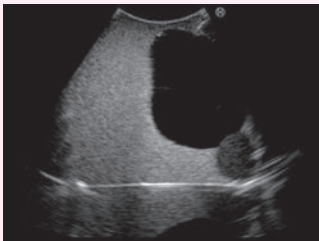
KEY FEATURES



Urine volume 50mL



Urine volume 150mL



Urine volume 300mL



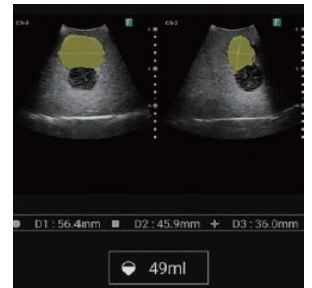
Urinary retention + balloon catheter

NEW VARIATION

NEW

US-16A

Intravesical Urine Volume Measurement Phantom
(Bladder Scanner Compatible)



FEATURES

- 1 | Compatible with bladder scanners*
- 2 | Representing female bladder (no prostate)

*The phantom is tested and compatible with a range of major bladder scanners.

DESCRIPTIONS

SPECIFICATIONS

Size:
Body: W30 x D26 x H18 cm, W12 x D10 x H7 in.
Phantom: W14 x D12 x H13cm, W5.5 x D4.7 x H 5.1 in

Weight
Body: 3.2kg / 7.1lbs
Phantom: 1.5kg / 3.3lbs

MATERIALS

Latex free

SET INCLUDES

- 1 lower torso manikin
- 4 ultrasound blocks
- 1 storage case
- 1 talcum powder
- 1 instruction manual

US-23

41953-000



NEW

Rectal and Bladder Ultrasound Phantom

Ultrasound training cubes for assessment of residual urine and excretion

Product Supervision

Hiroimi Sanada, RN, PhD, WOCN, FAAN President,
Ishikawa Prefectural Nursing University
Masaru Matsumoto, Asst. Professor
Ishikawa Prefectural Nursing University

FEATURES

- 1 | Variation of residue excretion in the rectum for ultrasound assessment:
hard, soft, combination and empty
- 2 | Three types of urinal bladder for assessment and urine volume measurement:
small, middle, large with a balloon catheter

SKILLS

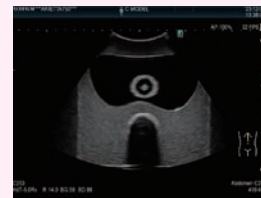
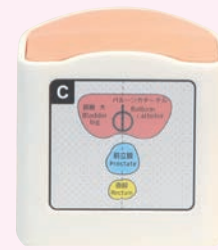
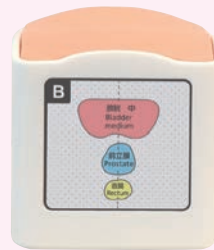
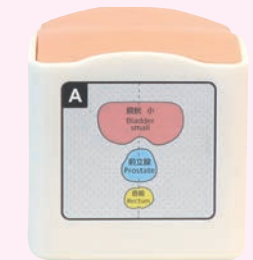
- | Ultrasound assessment of residue excretion in the rectum
- | Measurement of urine volume
- | Ultrasound assessment of the urinal bladder and the prostate
- | Assessment of indwelling bladder catheter



**A: Small bladder /
Hard excretion**

**B: Middle size bladder /
Soft excretion**

**C: Large bladder with a
balloon catheter / Hard and
soft excretion / empty rectum**



DESCRIPTIONS

SPECIFICATIONS

Size: W15 x D15 x 20H cm each
W5.9 x D5.9 x H3.4 in. each

Weight: 2.0kg each
0.9lbs each

SET INCLUDES

- 3 types of ultrasound phantom cube
- 1 talcum powder
- 1 storage case
- 1 instruction manual

* Ultrasound scanner is not included.



Scrotal Ultrasound Phantom

Master techniques for a safe and painless examination

Hands-on training to accurately diagnose scrotum abnormalities

Product Supervision

Charlotte Henningsen, MS, RT(R), RDMS, RVT,
FSDMS, FAIUM
Chair & Professor - Sonography Department
Adventist University of Health Sciences



FEATURES

- 1 | Two types of interchangeable scrotums: normal and with pathologies
- 2 | Excellent ultrasound image quality

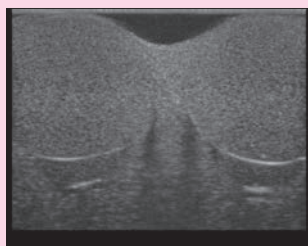
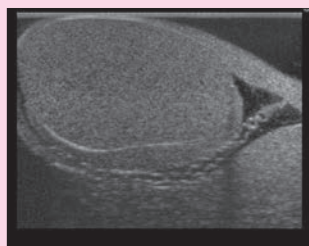
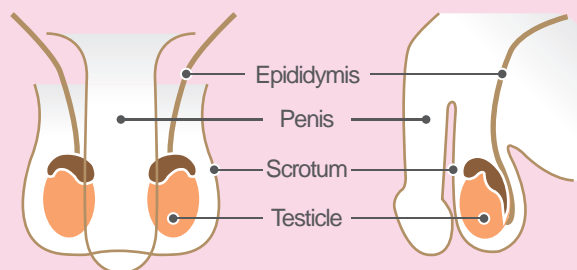
SKILLS

- | Patient positioning and preparation for examination
- | Scrotal ultrasound screening
- | Visualization of testicular cancer

KEY FEATURES

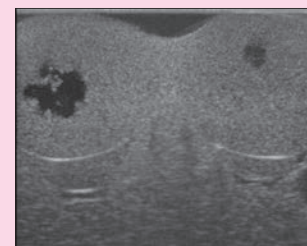
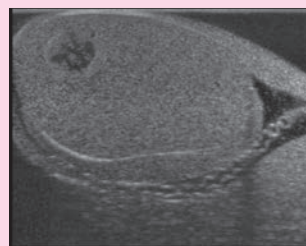
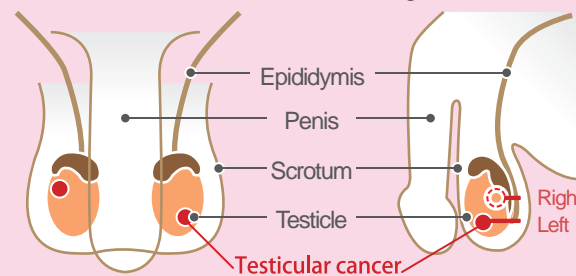
Normal phantom

- scrotum, testicle, epididymis and penis



Pathological phantom

-scrotum, testicle, epididymis and penis
-testicular cancer (each one in left and right testis, 10mm dia.)



DESCRIPTIONS

SPECIFICATIONS

Size: W34 x D33 x H24 cm/W13.4 x D13 x H9.4 in. Weight: 3.6kg / 7.9lbs

SET INCLUDES

- 1 pelvic body
- 1 normal scrotum
- 1 pathological scrotum
- 1 storage case
- 1 instruction manual
- 1 talcum powder

REPLACEMENT PARTS

- 41911-010 1 normal scrotum unit
- 41911-020 1 pathological scrotum unit

* Ultrasound scanner is not included.

MW63/MW63B

11446-000,100



Pressure Sores Simulator

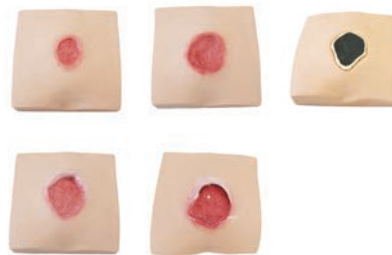
Training for assessment of Depth, Exudate, Size, Inflammation, Granulation using a combination of different pads and simulated liquid

Product Supervisor on:

MD. PhD, Professor Hiroto Terashi, Plastic and Reconstructive Surgery, Kobe University School of Medicine
Masaharu Sugimoto, Part-time Lecturer, Toyama University of Rehabilitation Medicine and Welfare Madoka
Noguchi, Nursing Department, Kobe University Hospital



Debridement of necrotic tissue



VARIATIONS

- | Sacral pressure sore with different stages (4 types)
 - Partial-thickness loss of dermis
 - Full-thickness skin loss
 - Full-thickness skin loss with granulation
 - Full thickness tissue loss with exposed bone
- | Greater trochanter pressure sore
 - Full-thickness skin loss
- | Ischial pressure sore
 - Full thickness tissue loss with exposed bone

FEATURES

- 1 | Seven features of pressure sore assessment* can be taught using a combination of different pads and simulated liquid
- 2 | Ultrasound assessment of deep tissue injury
Two types are included: normal and edema
- 3 | Cleansing, applying dressings or topical medications and procedures of Negative Pressure Wound Therapy (NPWT)
- 4 | Simulated exudate, and necrotic tissue set are included
Excellent quality in appearance and texture

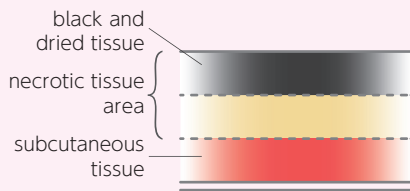
*For further information refer DESIGN-R 2020:
https://www.jspu.org/english/publication/docs/DESIGN-R_manual_eng.pdf

SKILLS

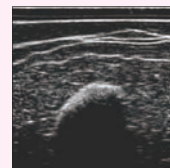
- | Pressure Sore Assessment
- | Palpation of the wound
- | Ultrasound assessment of deep tissue injury (edema in the ischial area)
- | Wound cleansing care
- | Applying dressings
- | Applying topical medications
- | Negative Pressure Wound Therapy
- | Debridement of necrotic tissue
- | Pressure Sore Prevention

KEY FEATURES

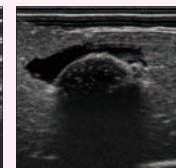
- Necrotic Tissue Removal set
Three-layer structure



- Sciatic pressure sore:
Ultrasound assessment of deep tissue injury
Two types are included: normal and edema



Normal



Edema



DESCRIPTIONS

SPECIFICATIONS

Size: W44 x D40 x H38 cm / W17.3 x D15.7 x H15 in. Weight: 3.8 kg / 8.4 lbs

SET INCLUDES

- 1 lower body torso
- 1 four types of sacral pressure sore pads
- 1 ischial pressure sore pad stage IV
- 1 two types of echo pads*
- 1 consumables set
- 1 necrotic tissue removal set*
- 1 storage case
- 1 instruction manual

SET VARIATIONS

- Full set (MW63) : 11446-000
Basic set (MW63B) : 11446-100

MATERIALS

- Soft resin
Latex free

marked* are for full set only

REPLACEMENT PARTS

- | | |
|-----------|------------------------------------|
| 11446-010 | 1 consumables set |
| 11446-020 | 1 simulated pus |
| 11446-030 | 1 simulated exudate |
| 11446-040 | 1 simulated blood |
| 11446-050 | 1 simulated necrotic tissue |
| 11446-200 | 1 necrotic tissue removal set |
| 11446-220 | 1 base for necrotic tissue removal |
| 11446-210 | 1 pad for necrotic tissue removal |
| 11446-070 | 1 set of two types of echo pads |
| 11446-060 | 1 body for MW63 / B |

<sacral pressure sore pads>I

- 11446-000-01 stage II
11446-000-02 stage III
11446-000-03 stage IV (granulation)
11446-000-04 stage IV (pockets)

11446-000-05 1 ischial sore pad stage IV

US-21

41950-000



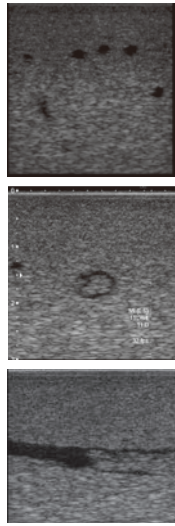
NEW

DVT (Deep Vein Thrombosis) Phantom

For ultrasound screening of DVT (Deep Vein Thrombosis)

Product Supervision

Kenji Karino, Professor, Clinical Skill-Up Center, Simane University Hospital



FEATURES

- 1 | Faithful reproduction of blood vessel meandering, branching, and thrombus
- 2 | The built-in blood vessels allow for milking method as well as observation of compression of the vessels by applying pressure with a transducer
- 3 | Familiarize yourself with the assessment of venous thrombosis in the lower limbs

SKILLS

- | Screening for deep venous thrombosis in the lower limbs
- | Observation of blood flow by milking method

DESCRIPTIONS

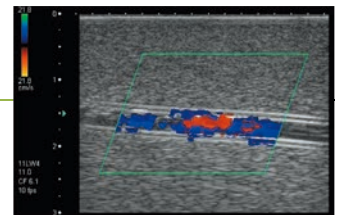
SET INCLUDES

- 1 lower limb manikin
- 1 ultrasound calf phantom (incorporated)
- 1 talcum powder
- 1 storage case
- 1 instruction manual

SPECIFICATIONS

Size: W27 x D17 x H47 cm each
W10.6 x D6.7 x H18.5 in. each

Weight: 3.0kg each
6.6lbs each



* Ultrasound scanner is not included.

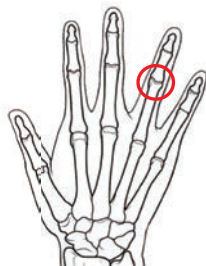
US-17

41933-000



Rheumatoid Hand Phantom

Ultrasound examination is a key skill for early diagnosis on rheumatoid arthritis

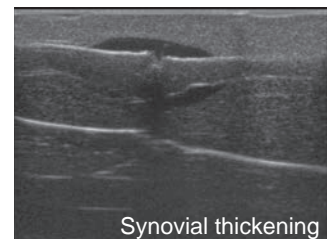


FEATURES

- 1 | For skills training of ultrasound examination on rheumatoid arthritis
Synovial thickening and increased synovial fluid are simulated on middle and ring finger
- 2 | ring finger

SKILLS

- | Ultrasound examination on rheumatoid arthritis



DESCRIPTIONS

SPECIFICATIONS

Size: W17 x D5 x H21 cm
W6 x D2 x H8 in.

Weight: 0.6kg/ 1.32lbs

MATERIALS

Polyurethane elastomer
Latex free

SET INCLUDES

- 1 hand manikin
- 1 instruction manual
- 1 storage case
- 1 talcum powder

*Ultrasound scanner is not included.

Lung Ultrasound Training Phantom ECHOLUNG

**Simple, durable and effective tool
to learn the basics of lung ultrasound**

Product Supervision

Hirosaki University
School of Medicine & Hospital Department
of General Medicine Tadashi Kobayashi



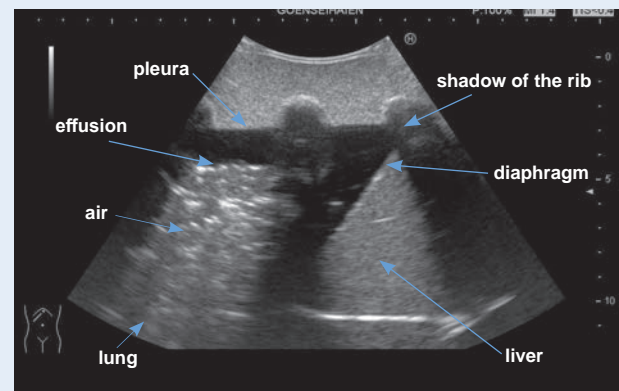
FEATURES

- 1 | Four kinds of units: A-LINE, B-LINE(few), B-LINE (many), pneumonia and pleural effusion to learn the basics of lung ultrasound
- 2 | Palpable ribs as body surface landmarks to learn positioning of the transducer
- 3 | Anatomy includes: lung, chest wall, ribs
- 4 | No special storage needed
- 5 | Suitable for training in large groups

SKILLS

- | Handling and manipulation of probe on lung ultrasound.
- | Scanning the lungs to evaluate pneumonia findings.

ANATOMY



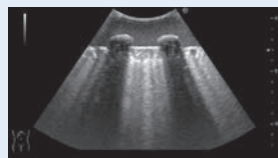
Pneumonia and pleural effusion



A-LINE



B-LINE



B-LINE(many)

DESCRIPTIONS

SPECIFICATIONS

Size: Body: 32×25×12.5cm/13×10×4.9 in.
Module: 14.8×11.8×11cm/5.8×4.6×4.3 in.

Weight: Body: 1.9kg
A-LINE/B-LINE/B-LINE (many): 0.9kg each
Pneumonia and pleural effusion: 1.4kg

SET INCLUDES

Basic Set (41946-000)	Full Set (41946-100)
1 main body	1 main body
4 kinds of lung modules x 1 set	4 kinds of lung modules x 2 sets
1 instruction manual	1 instruction manual
1 talcum powder	1 talcum powder
1 storage case	1 storage case

OPTIONAL PARTS

41946-110
4 kinds of lung modules x 1 set

Ultrasound Guided Tube Feeding Phantom

**Anatomically correct neck model
for Ultrasound Guided Tube Feeding Training**

Product Supervision
Hirosaki University Hospital,
General Medical Department.
Dr. Kobayashi Tadashi



FEATURES

- 1 | Anatomically correct neck model
 - Thyroid Gland
 - Trachea
 - Esophagus
 - Sternum
 - Collarbone
 - Carotid Artery
 - Jugular Vein
- 2 | Realistic neck ultrasound images
- 3 | Usable with real ultrasound diagnostic devices
- 4 | Allows the confirmation of the proper Nasogastric Tube Placement with ultrasound
- 5 | Inner switch for tube insertion direction; trachea/esophagus for ultrasound verification of esophageal insertion and exclusion of misplacement

SKILLS

- | Proper handling and manipulation of probe on neck ultrasound
- | Feeding tube insertion
- | Confirmation of tube placement by ultrasound
- | Neck scan to evaluate the tube position



Ultrasound image

DESCRIPTIONS

SPECIFICATIONS

Size: W31 × D16 × H17 cm
W12.2 × D6.3 × HD6.7 in.

Weight: 2.8kg
6.2lbs

SET INCLUDES

- 1 | main body
- 1 | ultrasound neck block
- 1 | nasogastric tube
- 1 | urethane block
- 1 | syringe
- 1 | talcum powder
- 1 | storage case
- 1 | instruction manual

* Ultrasound scanner is not included.

Thyroid Biopsy Phantom

Enhance confidence in performing safe and accurate thyroid biopsies

Visualization of the thyroid and targets in reference to sonographic landmarks.

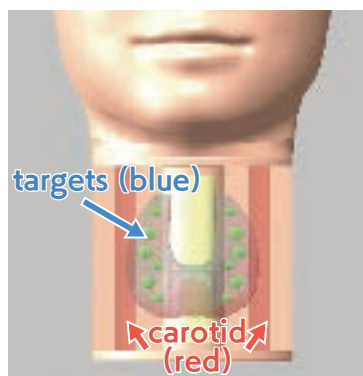


FEATURES

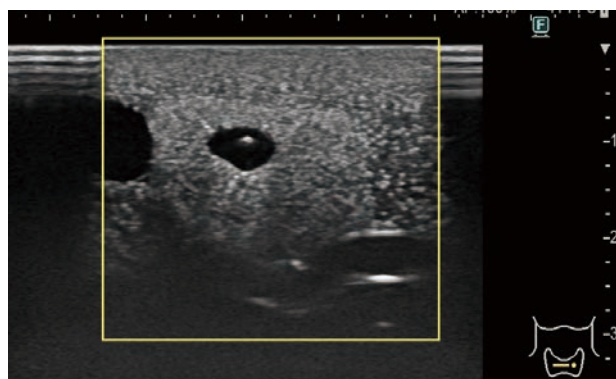
- 1 | Transparent and opaque biopsy blocks for introductory and advanced learners, featuring step-by-step acquisition of the biopsy skills.
- 2 | Targets in two sizes containing liquid for aspiration are embedded in the thyroid.
- 3 | Targets and carotids are colored to confirm successful sample collections as well as complications.

SKILLS

- | Ultrasound examination on the neck
- | Ultrasound-guided FNA (Fine Needle Aspiration)



Internal structure



Target and the FNA needle

DESCRIPTIONS

SPECIFICATIONS

Size: W26 x D14 x H 12 cm
W10.2 x D5.5 x H4.7 in.

Weight: 1.5kg / 3.3lbs

Target size: 5mm dia., 7mm dia.
0.27in dia., 0.19in dia.

SET INCLUDES

- 1 face and neck manikin
- 1 transparent biopsy block
- 1 opaque biopsy block
- 1 storage case
- 1 instruction manual

MATERIALS

Soft resin, hydrogel, hard resin
Latex free

REPLACEMENT PARTS

41957-010 2 biopsy blocks
(duo set :
transparent + opaque each one)

Ultrasound scanner and needles are not included.

Femoral Arterial Puncture Trainer

Hands-on femoral arterial access training both with ultrasound-guided and landmark-guided procedures.

Boost your confidence and skill in arterial blood sampling

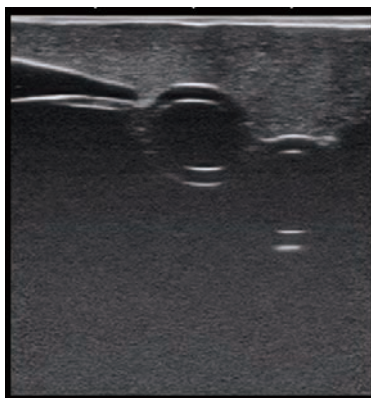
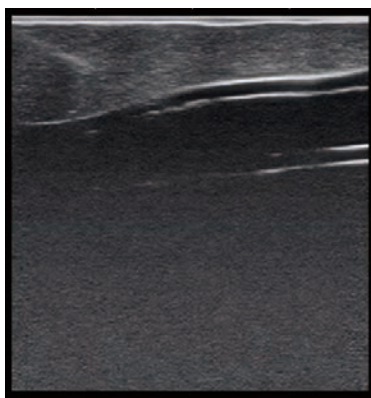


FEATURES

- 1 | Lifelike arterial pulse
- 2 | Palpable superior iliac spine(ASIS) and pubic bone
- 3 | Realistic needle resistance against tissue and artery wall
- 4 | Natural counter-flow
- 5 | No puncture trace remains on the injection site
- 6 | Leak-free connections

SKILLS

- | Ultrasound-guided femoral artery puncture
- | Landmark-guided femoral artery puncture
- | Blood sampling



DESCRIPTIONS

SPECIFICATIONS

Size: W33 x D35 x H15 cm / W13.0 x D13.8 x H5.9in. (manikin size)
W20 x D16 x H13 cm / W7.9 x D6.3 x H5.1 in. (pump size)

Weight: 1.5kg/3.3lbs
Power: AC100-240V, 50/60 Hz

MATERIALS

Soft resin
Latex free

Ultrasound scanner and needles are not included.

Ultrasound Guided Arterial Puncture Training Pads

Enhanced Training with the M99: Master Ultrasound-Guided Radial Arterial Puncture

Boost your confidence and skill in arterial blood sampling



Ultrasound Puncture pads



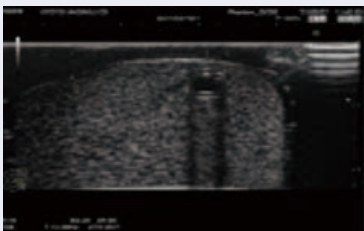
Training with M99 Arterial Puncture Training Wrist

FEATURES

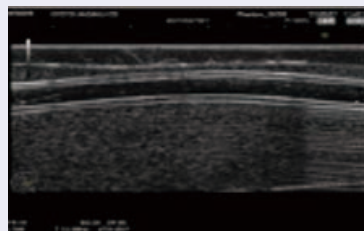
- 1 | Palpable pulsation of arterial pulse
- 2 | Realistic needle resistance against tissue and artery wall
- 3 | Natural counter-flow
- 4 | Radial arterial line placement can be simulated
- 5 | No puncture trace remains on the injection site
- 6 | Leak-free connections

SKILLS

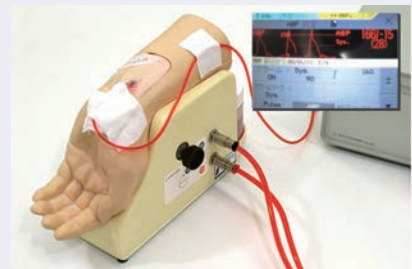
- | Ultrasound-guided
 - radial artery puncture
 - artery blood sampling
 - radial line placement



Transverse Plane



Longitudinal Plane



IABP Measurement
(Arterial pressure values are not simulated)

DESCRIPTIONS

REPLACEMENT PARTS

- 11351-110 2 ultrasound puncture pads
- 11351-120 2 ultrasound puncture inner pads
- 11351-130 2 ultrasound puncture outer pads
- 11388-400 10 cotton swabs red

MATERIALS

- Soft resin
- Latex free

RECOMMENDED DEVICES

- AGB Kit 22-25G

Ultrasound scanner and needles are not included.

MW4

11383-000



Ultrasound-Guided Thoracentesis Simulator

MW4A

11383-100

Ultrasound-Guided Thoracentesis Simulator - Strap-on set -

MW15

11394-000

Ultrasound-Guided Pericardiocentesis Simulator

MW17

11396-000

Ultrasound-Guided Thoracentesis/ Pericardiocentesis Simulator

Product Supervision

Takahiro Amano, M.D.
Vice President
Senior Vice-Dean, Postgraduate School
Professor and Director, Center of Postgraduate
Medical Education
International University of Health and Welfare
Honorary Director, Sanno Medical Center



SKILLS

Thoracentesis

- | Patient positioning
- | Recognition of anatomical landmarks by ultrasound
- | Assessment of level and volume of pleural effusion
- | Determination of insertion site
- | Needle insertion and collection of fluid

SKILLS

Pericardiocentesis

- | Patient positioning
- | Visualization of pericardial fluid under ultrasound scanning
- | Landmark palpation
- | Needle insertion to the pericardial space
- | Aspiration of pericardial effusion

DESCRIPTIONS

SET INCLUDES

	MW4	MW4A	MW15	MW17
1 adult chest model	✓		✓	✓
1 mid-axially line unit	✓	✓		✓
1 mid-scapular line unit	✓	✓		✓
1 pericardiocentesis unit			✓	✓
1 pillow for positioning	✓		✓	✓
1 explanation model for thoracentesis	✓			✓
1 instruction manual	✓	✓	✓	✓

Accessories

	MW4	MW4A	MW15	MW17
1 irrigator	✓			✓
1 funnel		✓		✓
1 syringe (50ml)	✓	✓	✓	✓x2
1 joint hose			✓	✓
1 tube with three-way stopcock	✓	✓		✓
1 plastic jar	✓	✓		✓

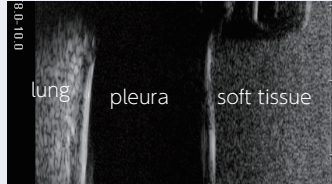
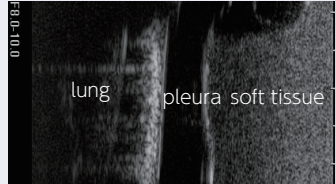
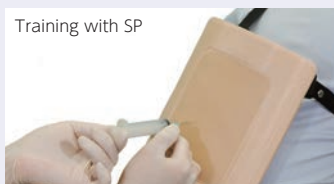
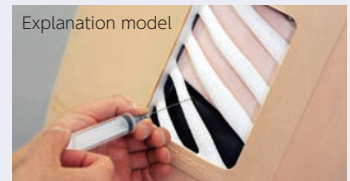
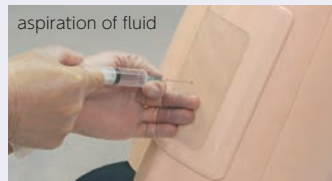
Thoracentesis

Simulate thoracentesis on both a torso and SP

This Ultrasound-Guided Thoracentesis Simulator features two types of puncture units: mid-scapular line access and mid-axillary line access. Strap-on (wearable) puncture units facilitate hybrid training sessions with simulated patients

FEATURES

- 1 | Palpable ribs
- 2 | Realistic needle-tip insertion and resistance
- 3 | Strap-on units to practice patient positioning and communication
- 4 | Two sites for access: right mid-scapular line and left mid-axillary line
- 5 | Volume of pleural effusion can be controlled to set different levels of difficulty
- 6 | Body torso for independent training (except for MW4A)



Pericardiocentesis

Practice patient safety during pericardiocentesis with ultrasound guidance

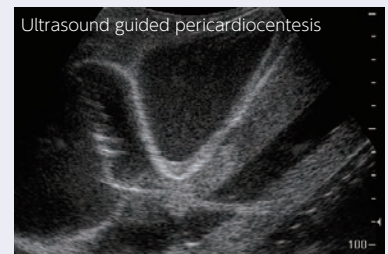
This simulator allows trainees to insert the needle under ultrasound guidance, pierce the "pericardial sac" and aspirate pericardial fluid

FEATURES

- 1 | Durable and replaceable puncture pad
- 2 | Practice both the subxiphoid approach and parasternal approach through palpable and ultrasonic landmarks
- 3 | Realistic needle tip sensation during puncture of the "pericardial sac"



Identification of "Larrey's space" (left xiphisternal junction) for needle insertion



Inserting needle to the pericardial space with ultrasound guidance. Ventricles, ribs, pericardium, liver and main artery can be visualized

DESCRIPTIONS

SPECIFICATIONS

Torso size: W40 x D25 x H50 cm / W15.7 x D9.9 x H19.7 in.
 Thoracentesis pad size: W16 x D7 x H21 cm / W6.3 x D2.76 x H8.3 in.
 Pericardiocentesis pad size: W16 x D14 x H21 cm / W6.3 x D5.6 x H8.3 in.
 Weight: MW4: 9.17kg / 20.2lbs
 MW15: 8.65kg / 19.7lbs
 MW17: 9.65kg / 21.27lbs

MATERIALS

Soft resin, hard resin
 Latex free

REPLACEMENT PARTS

11383-010 2 mid-axially line puncture pads
 11383-020 2 mid-scapular line unit puncture pads
 11383-030 2 replacement lungs
 11394-010 2 pericardiocentesis pads for MW15/MW17

RECOMMENDED DEVICES

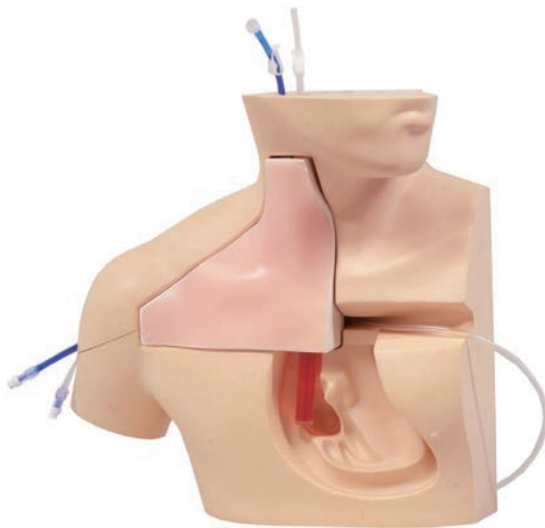
Thoracentesis: 22 G/ 23 G needle
 Pericardiocentesis: 18 G needle

Ultrasound scanner and needles are not included.

CVC Insertion Simulator III

CVC III facilitates a sequence of uninterrupted simulation experience for specialist training

From aseptic field preparation to final catheter placement



FEATURES

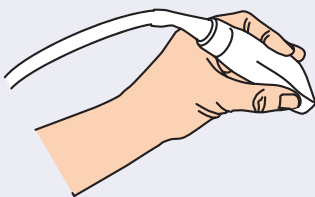
- 1 | Repeatable Insertion practice for obtaining the best technique for patient safety
- 2 | Both landmark-guided insertion and ultrasound-guided techniques can be practiced
- 3 | The frictionless tissue-like simulation pad allows for realistic sensation during CVC placement

SKILLS

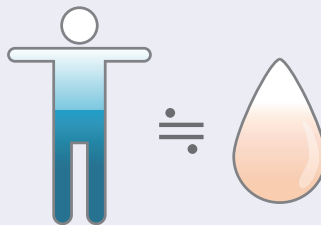
Take complete steps to a successful CVC insertion

- | Perform hand hygiene practices and prepare aseptic field
- | Decide on insertion site via ultrasound guidance or observation and palpation of landmarks
- | Insertion under ultrasound guidance or via landmark technique
- | Confirm flashback
- | Advance guidewire and sheath
- | Insert catheter

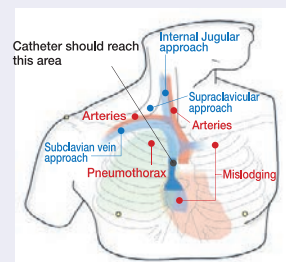
KEY FEATURES



Ultrasound compatible



Pad material simulates features of human tissue



Anatomically accurate features including 3 insertion sites and rib cage

DESCRIPTIONS

SPECIFICATIONS

Size: W40 x D20 x H 34 cm
W15.7 x D8 x H13.5 in.

SET INCLUDES

- | | |
|-------------------------------------|---|
| 1 male upper torso manikin | 2 vein tubes (blue): 2 type |
| 2 CVC placement pads | 2 vein pipes |
| 1 skin for cannulation training | 1 pulsation unit (for landmark technique) |
| 1 transparent anatomical block | 1 irrigation bottle (for UG technique) |
| 2 artery tube (transparent): 2 type | 1 plastic jar |

MATERIALS

Soft resin, hydrogel, hard resin
Latex free

- | |
|---|
| 1 sample needle |
| 2 syringes (2.5ml, 50ml) |
| 1 introductory ultrasound training block REAL VESSELS |
| 1 instruction manual |

REPLACEMENT PARTS

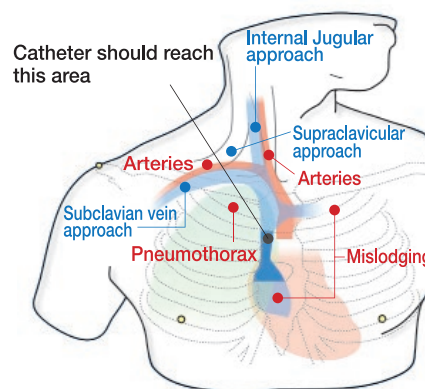
- | | |
|-----------|---|
| 11347-210 | 2 introductory ultrasound training blocks REAL VESSEL |
| 11347-240 | 2 CVC placement pads |
| 11347-260 | 1 pulsation unit |
| 11347-320 | 1 irrigation bottle |

Ultrasound scanner and needles are not included.



CVC Insertion Simulator II

Conduct a variety of CVC insertion and management simulations with the assistance of 3 interchangeable pads



Product Supervision

Masahiro Tanabe, M.D., Ph.D., Professor Director General Medical Education Center Chiba University School of Medicine

Kinya Sando, M.D., Ph.D., Professor Director Department of Human Dietetics Graduate School of Human Science Osaka Shoin Women's University

Masanori Hoki, M.D., Ph.D., Professor Department of Human Dietetics Graduate School of Human Science Osaka Shoin Women's University

Joho Tokumine, M.D.Ph.D., Department of Anesthesia, Kawatetsu Chiba Hospital

FEATURES

- 1 Realistic ultrasound-guided CVC
- 2 Landmark puncture pad with anatomically correct vein bifurcations simulates mechanical complications including pneumothorax, mislodging and artery puncture*
- 3 Transparent anatomical block for anatomical understanding and guide wire manipulation
- 4 Introductory ultrasound training block to acquire basics of ultrasound-guided venous access
- 5 Both internal jugular and subclavian (axillary) veins are accessible

SKILLS

- Ultrasound-guided CVC
- Landmark-guided CVC*
- Ultrasound-guided venous access
- Prevention of mechanical complications

*Landmark pad is included only in M93UB set

KEY FEATURES



Transparent anatomical block



Ultrasound training block



Ultrasound puncture pad

DESCRIPTIONS

SPECIFICATIONS

Size: W40 x D20 x H 34 cm
W15.8 x D7.9 x H 13.4 in.
Weight: 2.3kg/5lbs

MATERIALS

Soft resin
Latex free

SET VARIATIONS

COMMON

- 1 male upper torso manikin
- 1 skin for cannulation training
- 1 transparent anatomical block
- 1 introductory ultrasound training block
- 1 irrigation bottle
- 1 syringes (2.5ml, 50ml)
- 1 sample needle
- 1 instruction manual

M93UB

- 1 landmark puncture pad
- 1 ultrasound puncture pad
- 10 cotton swab red
- 10 cotton swab blue
- 2 plastic jars
- 1 air bulb

M93U

- 2 ultrasound puncture pad
- 1 plastic jar

REPLACEMENT PARTS

- 11347-280 2 landmark puncture pads
- 11347-170 2 ultrasound puncture pads
- 11347-210 2 introductory ultrasound training blocks
- 11347-320 irrigation bottle
- 11388-400 10 cotton swab red
- 11402-010 10 cotton swab blue

Ultrasound scanner and needles are not included.



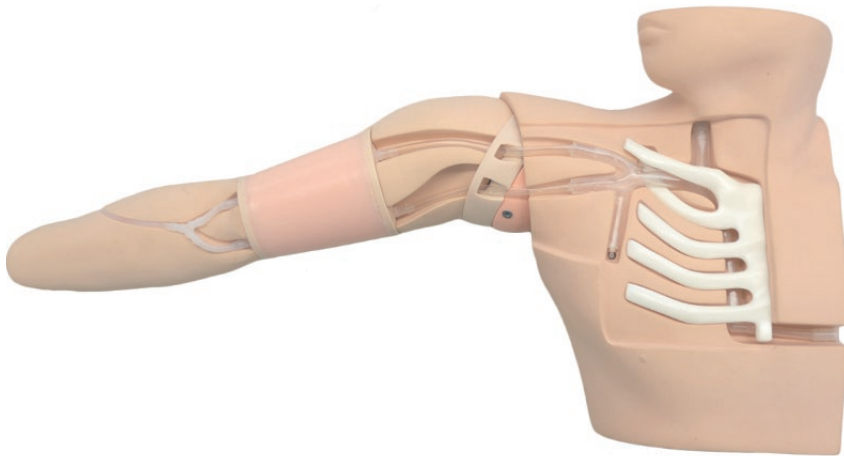
Ultrasound-Guided PICC Training Simulator

New, innovative, human-like material for perfect visualization

An uncomplicated design with replaceable puncture site and anatomically accurate features including the rib cage, sternum, bifurcation, plus visible tip placement in the superior vena cava

Product Supervision

Joho Tokumine, M.D., Ph.D.,
Department of Anesthesiology,
Kyorin University School of Medicine



FEATURES

- 1 | Excellent image quality and visualization of the needle tip for ultrasound-guided venous access
- 2 | Movable shoulder to demonstrate positioning
- 3 | Realistic flashback in needle provides confirmation for successful venous access
- 4 | Ribs and right clavicle provide anatomical understanding of correct PICC placement
- 5 | Anatomically correct bifurcation of the vein
- 6 | Simulation of cannula malposition

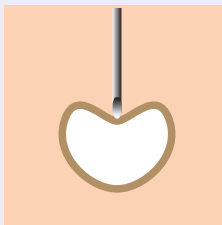
SKILLS

- | Ensure patient comfort and position
- | Hand hygiene and preparation of sterile field
- | Identify puncture site
- | Ultrasound-guided insertion
- | Insertion of dilator and guide wire
- | Insertion of sheath
- | Insertion of catheter

KEY FEATURES



Ultrasound guided puncture



Movable shoulder



Malpositioning

DESCRIPTIONS

SPECIFICATIONS

Size: W79 x D38 x H18 cm Weight: 4.5kg/10lbs
W31 x D14.9 x H7 in.

SET INCLUDES

- | | |
|---------------------------------------|----------------------|
| 1 male upper torso with the right arm | 1 instruction manual |
| 2 PICC puncture pads | 1 storage case |
| 10 cotton swabs red | |
| 1 jar | |
| 1 syringe | |

MATERIALS

Soft resin, hard resin
Latex free

REPLACEMENT PARTS

- 11398-010 2 PICC puncture pads
11388-400 10 cotton swabs red

RECOMMENDED DEVICES

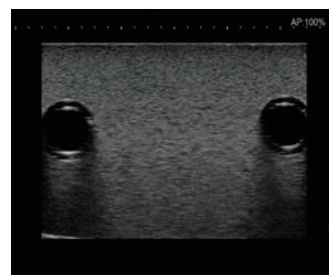
PIC catheter 4Fr., 50-60cm

Ultrasound scanner and PICC instruments are not included.

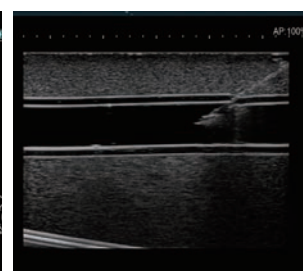
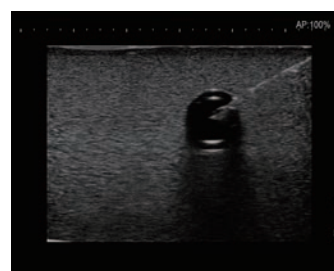


Introductory Ultrasound Training Block REAL VESSEL

Provides training in hands-eye coordination and basic skills in ultrasound-guided venous access



Localizing the vessels and the target sites



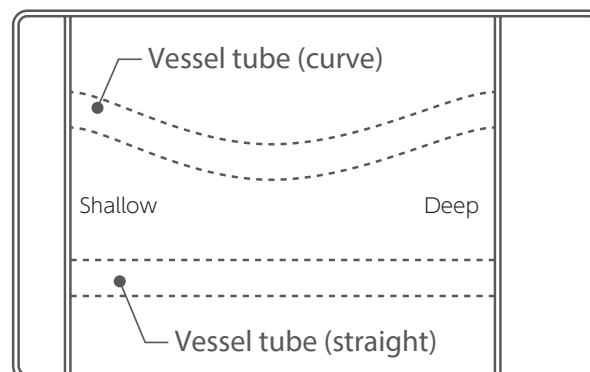
Penetrating the vessel wall with the needle kept in view

FEATURES

- 1 | 2 simulated vessel lines: straight and curving
- 2 | Lines have slope represent vessels with different depth
- 3 | Vessel wall yields under pressure of a needle tip

SKILLS

- | Visualization and localization of the vessels
- | Probe manipulation
- | Basics for ultrasound-guided vessel access



DESCRIPTIONS

SPECIFICATIONS

Size: W17 x D10.5 x H4.5cm
W6.7 x D 4.1 x H1.8 in
Weight: 0.5kg / 1.1lbs

SET INCLUDES

2 introductory ultrasound training block

MATERIALS

Soft resin
Latex free

RECOMMENDED DEVICES

REPLACEMENT PARTS

M43E



11348-500, -M, -D



Ultrasound Compatible Lumbar Puncture / Epidural Simulator

Lumbar puncture training with ultrasound guidance

Anatomically correct puncture block offers excellent ultrasound images



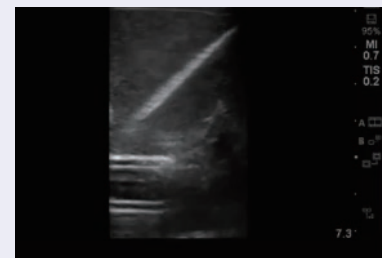
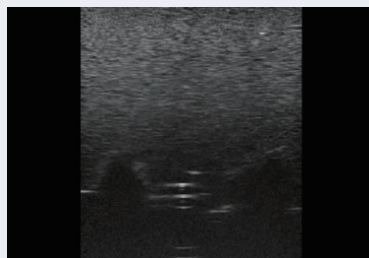
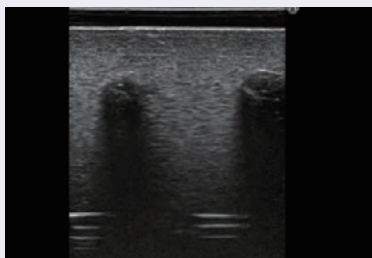
FEATURES

- 1 | Durable and replaceable parts for repetitive practice
- 2 | Adjustable to an upright or lateral position
- 3 | Translucent block makes the needle trace visible
- 4 | Interchangeable parts for other landmark and fluoroscopic procedure training

SKILLS

- | Ultrasound-guided lumbar puncture
- | Ultrasound-guided epidural anesthesia
- | CSF collection and CSF pressure measurement

IMAGES



DESCRIPTIONS

SPECIFICATIONS

Size: W33 x D21 x H30 cm
W13 x D8.3 x H11.8 in.

SET INCLUDES

- | | |
|---|----------------------|
| 1 lumbar region model | 1 irrigation bag |
| 1 ultrasound lumbar puncture/epidural block | 1 syringe |
| 1 ultrasound lumbar region skin cover | 1 storage case |
| 1 two way support base | 1 instruction manual |

MATERIALS

Soft resin, polyurethane elastomer
Latex free

REPLACEMENT PARTS

- | | |
|-----------|--|
| 11348-190 | 1 ultrasound lumbar puncture /epidural block |
| 11348-230 | 1 ultrasound lumbar region skin cover for M43E |
| 11348-160 | 1 supporting stand |

SET VARIATIONS

- | | |
|-------------|-----------------------|
| 11348-500 | M43E light skin tone |
| 11348-500-M | M43E medium skin tone |
| 11348-500-D | M43E dark skin tone |

Ultrasound scanner and needles are not included.

Elementary Cubic Phantom BLACKCUBE

Acquire skills to envision three-dimensional shapes from two-dimensional sections (echo images)
For elementary training of ultrasound scanning

Product Supervision

Tadashi Kobayashi, M.D., Ph.D.
 Graduate School of Medicine Endowed
 Course Development of Community
 Healthcare



FEATURES

- 1 | Each cube contains a geometrical three-dimensional object, which is externally invisible
- 2 | All six surfaces of the cube allow for scanning
- 3 | Facilitates learning the basics of grasping three-dimensional shapes with an ultrasound scanner
- 4 | Combinations of different cubes allow for skills assessment as well as practical trainings

SKILLS

- | Visualization and measurement of geometrical objects with an ultrasound scanner
- | Infer three-dimensional shape based of 2-D ultrasound images from six surfaces

First section



Second section



3-D shape



Set Variations

	Basic set 41955-000	Full set 41955-100
Sphere (large)	●	●
Sphere (small)	●	●
Double sphere	●	●
Ellipsoid	●	●
Cylinder	●	●
Cone	●	●
Triangular pyramid		●
Star-shaped prism		●

DESCRIPTIONS

SPECIFICATIONS

Size: W10 x D10 x H20 cm each
 W3.9 x D3.9 x H3.9 in. each

Weight: 1.0 kg each
 2.2 lbs each

SET INCLUDES

- 6-8 types of ultrasound phantom cube
- 1 talcum powder
- 1 storage case
- 1 working book

- 1 quick reference cards
- 1 instruction manual

REPLACEMENT PARTS

- 41955-010 A. Sphere (large)
- 41955-020 B. Sphere (small)
- 41955-030 C. Double sphere
- 41955-040 D. Cylinder
- 41955-050 E. Cone
- 41955-060 F. Ellipsoid
- 41955-070 G. Star-shaped prism
- 41055-080 H. Triangular pyramid

* Ultrasound scanner is not included.

US-18

41934-000



Fundamental Ultrasound Phantom

This oval phantom helps sonographers with basic trainings

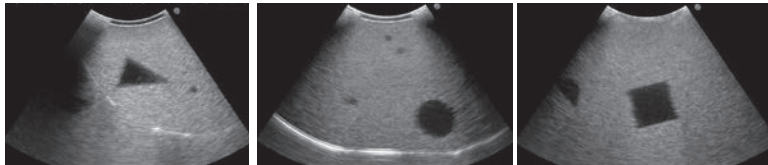


FEATURES

- 1 | Phantom for basic manipulation of ultrasound transducer
- 2 | Recognition of shape, echogenicity, distance, and practice of horizontal transducer works

SKILLS

- | Interpret 2-D cross sectional images into the shape of 3-D dimensional objects
- | 10 objects are embedded
- | Adjusting Time-Gain Compensation to obtain suitable density
- | Measuring dimensions and distance
- | Transducer handling to obtain accurate 2-D cross-section image
- | Flat and spheroidal surfaces provide a variety of difficulty



DESCRIPTIONS

SPECIFICATIONS

Size: W24 x D16 x H10 cm / W9.5 x D6.3 x H3.9 in. Weight: 2kg/ 4.4lbs

SET INCLUDES

- 1 phantom
- 1 targets layout diagram
- 1 talcum powder
- 1 storage case

MATERIALS

Polyurethane elastomer
Latex free

*Ultrasound scanner is not included.

US-4

41902-000



Breast Ultrasound QA Phantom

Ensure highly detailed images for reliable breast cancer examinations

Ultrasound QA phantom for high precision imaging in the high frequency sonography, typically around 10 MHz, required in breast examination
For monthly basic quality check of ultrasound images along with longer term quality assurance to maintain consistency in performance of scanners and transducers



Mass targets block

Sonic velocity: 1434 m/sec at 25°C
Attenuation coefficient: 0.59 dB/ cm MHz at 25°C
Acoustic Impedance: 1.37 rayl at 25°C
Integrated targets: gray scale targets/ cyst targets

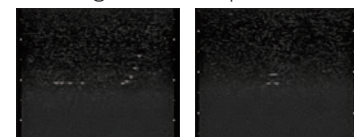
Dot targets block

Sonic velocity: 1442 m/sec at 25°C
Attenuation coefficient: 0.73 dB/cm MHz at 25°C
Acoustic impedance: 1.39 rayl at 25°C
Integrated targets: dot targets/ 45 degrees line target

Mass targets block (contrast resolution)



Dot targets block (spatial resolution)



DESCRIPTIONS

SPECIFICATIONS

Size: mass targets block phantom size: 18 x 7.5 x 11 cm / 7.2 x 3 x 4.4 in.
dot targets block phantom size: 13.5 x 7.5 x 11 cm / 5.4 x 3 x 4.4 in.

Weight: Mass 1.3kg / 2.7lbs
Dot 1.0kg / 2.2lbs

SET INCLUDES

- 1 mass targets block
- 1 dot targets block
- 1 thermometer
- 1 storage case
- 1 instruction manual

MATERIALS

Urethane elastomer,
acryl, nylon
Latex free

US-4B

41902-100

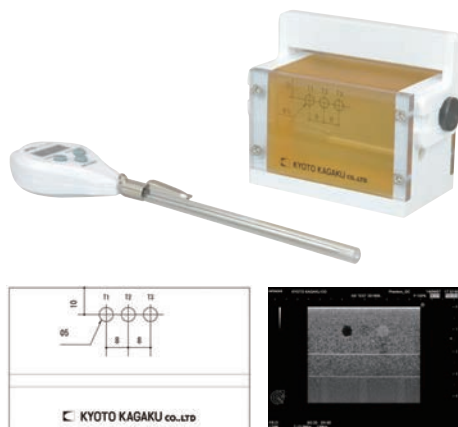


NEW

Small Parts Basic QA Phantom

**Excellent for the routine maintenance of image quality
in ultrasonography as well as the aging of devices and transducers**

Product Supervision
The Japan Association of
Breast and Thyroid Sonology (JABTS)



FEATURES

- 1 | Compact size allows imaging in a single scan, saving time and simplifying the process
- 2 | To ensure the verticality of the entrance beam, two horizontal wires are embedded and the supporting guide frame secure the transducer in its home position
- 3 | For monthly basic quality test along with longer term quality assurance to maintain consistency in performance of scanners and transducers
- 4 | Longevity and stability of phantom material ensured by 5-year-testing process
- 5 | To maintain the internal temperature of the phantom (23° C to 26 ° C), a thermometer is provided

ACOUSTIC FEATURES

Sonic velocity: 1434(±1) m/ sec at 25°C
Attenuation coefficient: 0.59 dB/ cm MHz at 25°C
Density: 0.954g/m³
Acoustic impedance: 1.37 rayl at 25°C
Integrated targets: Gray scale targets in three steps, at 10mm depth

QA items

| Image quality and aging of the transducer

DESCRIPTIONS

SPECIFICATIONS

Size: W10.3 x D5 x H8 cm
W4 x D1.97 x H3.15 in.
Weight: 0.33kg/ 0.72lbs

SET INCLUDES

- 1 phantom
- 1 thermometer
- 1 Instruction manual

MATERIALS

Urethane elastomer,
acryl,
nylon Latex free

US-2

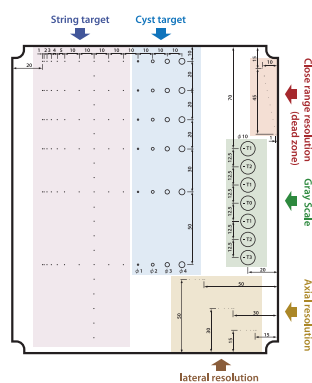
41338-010



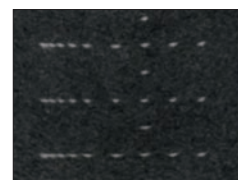
Ultrasound QA Phantom (Multi-Purpose Phantom N-365)

Durable and stable

Useful both for daily assessment and further research. Gray scale for evaluation, cyst targets with non-resonance cylinders, line targets for geometrical evaluation including close range (dead zone) resolution, axial and lateral resolution are prepared for scanning. The phantom is designed to allow scanning from all four side walls.



Gray Scale



String target

DESCRIPTIONS

SPECIFICATIONS

Size: W19 x H22 x D7 cm
W7.6 x H8.8 x D2.8 in.
Weight: 3.6kg / 7.9lbs

Sonic velocity: 1432m/ sec at 25 degrees C
Attenuation coefficient: 0.59 dB/ cm MHz at 25 degree C
Acoustic impedance: 1.38 rayl at 25 degree C

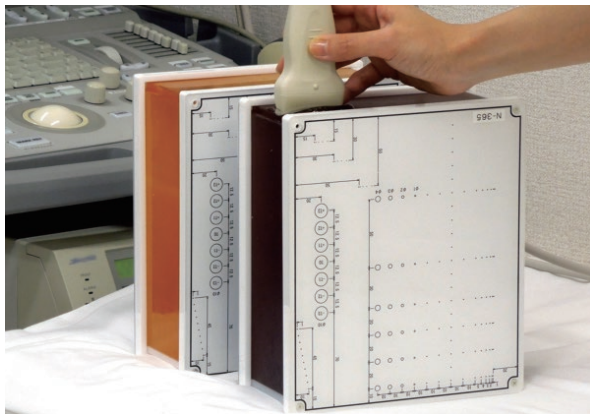
MATERIALS

Urethane elastomer, acryl, nylon
Latex free

SET INCLUDES

- 1 phantom
- 1 carrying case

Features of Ultrasound Phantom Materials



Materials for Ultrasound Phantoms

Patent No. 3650096

Durable, stable with homogeneous granular background reflection with excellent and controllable echogenicities

Sonic velocity 1434m/sec at 25 degrees C

Density 0.954g/cm³

Attenuation rate: 0.57dB/cm MHz at 25 degrees C

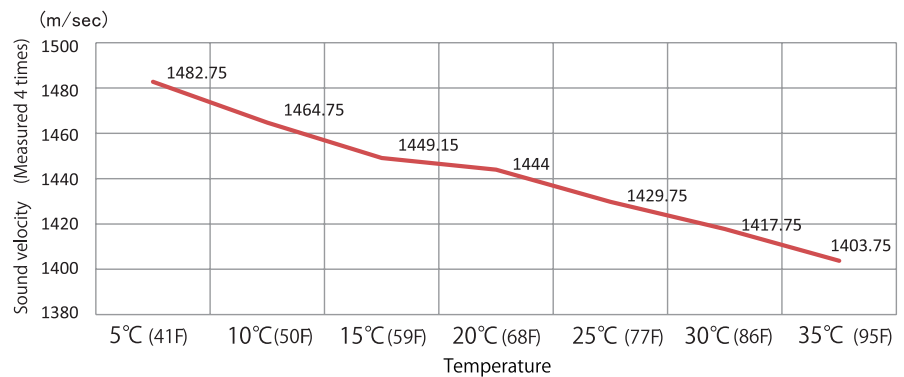
Aoustic impedance : 1.37 rayl at 25 degrees C

	15 degrees C	25 degrees C	35 degrees C
Speed of sound	1449.5 m/sec	1434.1 m/sec	1403.9 m/sec
Attenuation rate	0.58 dB/cmMHz	0.57 dB/cmMHz	0.55 dB/cmMHz

Comparison of 2004 phantom and 2012 phantom.

Natori H, Igarashi T, Arakawa M.
Durable fine resolution test phantom
for diagnostic ultrasound system
ECR 2013 Poster C-1765

"Durable fine resolution test phantom
for diagnostic ultrasound system",
H.Natori 2013



Building the Future of Ultrasound: Our New Healthcare Innovation Hub



We would like to introduce our new factory building (inaugurated April 2023) which specializes in medical imaging phantoms. This state-of-the-art facility not only allows enhances our manufacturing abilities but also serves as a hub for demonstrating the usage of Kyoto Kagaku phantoms worldwide. The second floor houses the ultrasound phantom team with a number of 3D printers for current manufacturing needs. The third floor features the "working commons," which serves as a web broadcasting studio for online training. Additionally, visitors can explore product exhibition rooms and simulated hospital environments for interactive learning experiences. Our lounge area is open to visitors from all over the world, creating an environment for communication and the exchange of innovative ideas. We invite you to visit Kyoto and join us for tea in our new building where conversations may spark ideas for the next generation of phantoms.

Toshiyuki Takkayama

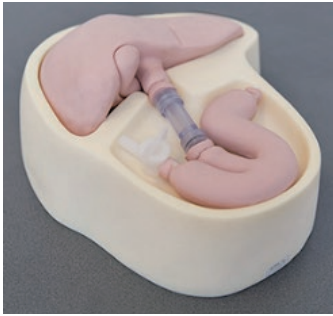
President
Toshiyuki Takkayama

We accept custom order items tailored for your needs, such as:

Study tool for innovation,
Phantoms meeting certain training requirements to promote standardized or new method of examination, Phantoms used Demonstration and user-training tool for device applicators

*The following phantoms are examples of custom made phantoms. Not for general sales.

Biliary model



A user training phantom for percutaneous transhepatic biliary drainage (PTBD).

Ultrasound and/or X-ray guided procedures

Removable common bile duct (CBD) to accommodate a simulated mass lesion or stone, etc

Urinary tract model

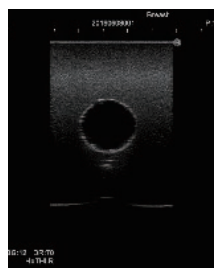


A demonstration/user training phantom for percutaneous nephrostomy/nephroureterectomy procedures

Ultrasound guided procedures

The bladder is transparent to demonstrate the catheter placement under direct vision. The kidney tissue allows repeated access with wide diameter catheters without showing marks of puncture site.

Abscess drainage model



A user training phantom for percutaneous nephrostomy/nephroureterectomy procedures

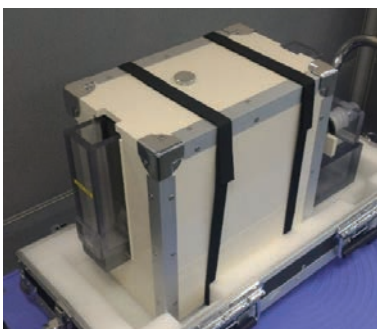
Ultrasound, X-ray and / or CT guided procedures

Three abscesses with different diameters and depth.

Abscess are refillable for repeated use.

The tissue allows repeated access with wide diameter catheters without showing marks of puncture site.

Endoscopic Ultrasound (EUS) Phantom



Stomach and duodenum are accessible with EUS probes, allowing to visualize pancreas, gall bladder and liver.

Multi Modality Biopsy Phantom



Compatible with ultrasound and CT. Can also be used for Mammography.

Check it out!

CORPORATE WEBSITE

Announcing our new mobile-friendly website,
containing downloadable product descriptions on over 100 items.

Browse through the lineup of Kyoto Kagaku simulators and phantoms.
All are made in Kyoto.



kyoto kagaku



<https://www.kyotokagaku.com/en/products/>



Radiology Phantom

Ultrasound Phantom

Simulator

Anatomical Model



Follow us on our Facebook

<https://www.facebook.com/KyotoKagaku>



Follow us on our YouTube Channel

<https://www.youtube.com/user/KyotoKagaku>



KYOTO KAGAKU co.,LTD

Head Office and Factories

15 Kitanecho-cho, Fushimi-ku, Kyoto, 612-8388, Japan

☎ +81-75-605-2510

🖨 +81-75-605-2519



<https://www.kyotokagaku.com/en>



rw-kyoto@kyotokagaku.co.jp

Asia & Middle East

2nd fl. NREG BL, 3-26-6 Hongo, Bunkyo-ku, Tokyo, 113-0033, Japan

☎ +81-3-3817-8071

🖨 +81-3-3817-8075

Europe, Russia & Africa



KYOTO KAGAKU EUROPE GmbH

🌐 <https://www.kyotokagaku.com/en> ✉ rw-kyoto@kyotokagaku.co.jp

De-Saint-Exupery-Str.10, 60549 Frankfurt, Germany

☎ +49-69-5060-28160

🖨 +49-69-5060-28170



All American regions

KYOTO KAGAKU AMERICA INC.

🌐 <https://www.kyotokagaku.com/en> ✉ info@kkamerica-inc.com

3109 Lomita Boulevard, Torrance, CA 90505-5108, USA

☎ +1-310-325-8860

🖨 +1-310-325-8867