

Ultrasound Examination Training Phantom "ABDFAN"

Japanese Patent No. 3650096

Unique high-fidelity ultrasound phantom facilitates effective training in abdominal ultrasound scanning with your own clinical devices. Simulated lesions embedded as targets provide wider educational opportunities.



Production supervision:
 Junji Machi, MD, PhD
 University of Hawaii at Manoa and Kuakini Medical Center



Inanimate tool for training of a novice as well as for demonstration by an expert.

Any ultrasound device with a convex probe can be used for the phantom.

Detailed hepatobiliary, pancreatic and other abdominal anatomy meeting requirements for excellent training; eight Couinaud's hepatic segments can be localized.

Various simulated lesions including biliary stones and cysts, solid tumors (hypoechoic, hyperechoic and target-appearance) in the liver, pancreas, spleen and kidneys.

Near real-size organs, structures and abnormal lesions.

Durable long-life phantom materials.

Tutorial Manual (DVD)



KYOTO KAGAKU

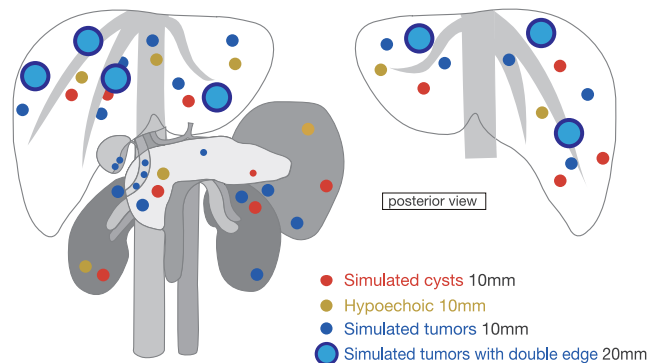
15 Kitaneokoya-cho, Fushimi-ku, Kyoto, 612-8388, JAPAN
 Tel: +81-75-605-2510 Fax: +81-75-605-2519
 www.kyotokagaku.com rw-kyoto@kyotokagaku.co.jp

Four variations of simulated lesions enrich the training application.

Pathologies:

hepatic lesions (cystic and solid), gallbladder and bile duct stones, pancreatic tumors (one invading the portal vein), splenic lesions, both kidney lesions, and left adrenal tumor.

Simulated lesions in liver, pancreas, kidney, spleen, gallbladder



Anatomies:

the liver
 (segmental anatomy, portal and hepatic venous systems, ligamentum teres and ligamentum venosum),

biliary tract
 (gallbladder, cystic duct, intrahepatic and extrahepatic bile ducts),

pancreas
 (pancreatic duct),

spleen,
 kidneys,
 detailed vascular structures
 (aorta, vena cava, celiac artery and its branches, portal vein and its branches, superior mesenteric vessels, renal vessels, etc)

Fully three dimensional approach

Midsagittal Plane



Right Costal Interspace Section



Left Costal Interspace Section



Axial Section



Right Costal Section



Approachable from All Surface



Detailed anatomy with approximate-to-human echogenicities.

Organs are based on cadaver mold and then modeled to realize right anatomy under ultrasound scanning. The phantom posture is designed to make the depth of the organs from the probe close to clinical setting. Echo-Zou, a disassemblable anatomical model for the relevant organs facilitates three dimensional understanding of sectional images.



Hyperchoic, Anechoic Targets



Hypochoic Targets



Gallstone



Pancreas



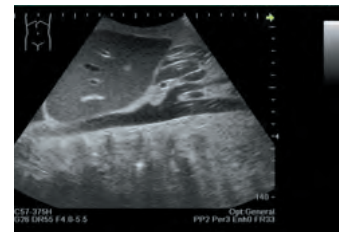
Double, Hypochoic Targets



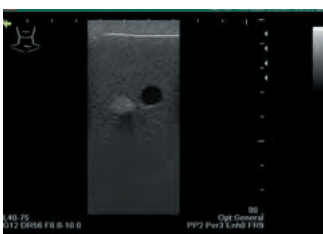
Double, Hyperchoic Targets



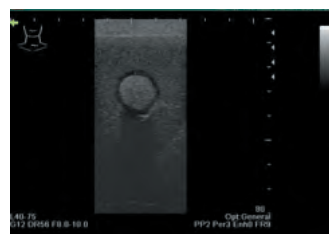
Pancreas



Pancreas



Hyperchoic, Anechoic Targets



Double Targets



Liver, Hepatic Vein



Liver, Portal Vein