

PH-60 | 41925-000

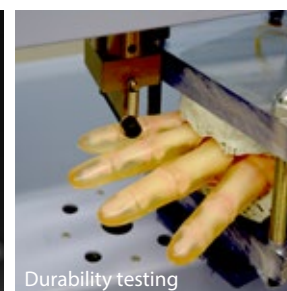
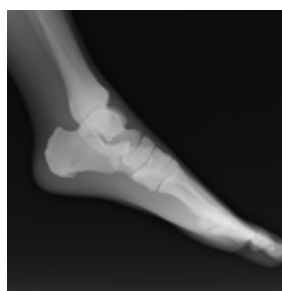
Tough Whole Body Phantom "PBU-90 RUGGED"



New phantom material is designed for rough handling, improved durability and less maintenance



SHOW MORE!



Durability testing

ANTHROPOMORPHIC PHANTOMS

FEATURES

- | Radiology absorption and HU number approximate to human body.
- | Main joints have close-to human articulation
- | Phantom can be disassembled into 10 individual parts

APPLICATIONS

- | Plain X-ray
- | Basic patient positioning
- | Basic CT

PBU-90 is a high durability type, allowing training scenarios that involve rough handling. Meanwhile, details of bones of the hands and the feet are simplified compared to those of PBU-50/60.

ANATOMY

skull/ spine/ clavicles/ scapulae/ ribs/ sternum/ coxal bones/ lungs with pulmonary vessels / trachea (up to primary bronchi)/ heart/ liver with portal and hepatic veins/ kidneys/ humerus/ antebrachial bone/ bones of hand/ femur/ patella/ lower leg bone / bones of foot

DESCRIPTIONS

SET INCLUDES

- 1 whole body phantom
- 1 head supporter
- 1 flat head screwdriver
- 1 set of sample X-ray data (DVD) manual

SPECIFICATIONS

Phantom height: 165 cm
65 in
Packing size: 85 x 60 x 44 cm x 2 boxes
33.5 x 24 x 17.3 in x 2 boxes
Phantom weight: 50 kg/ 110 lb
Packing weight: 80 kg/ 176 lb

MATERIALS

Soft tissue: urethane based resin (specific gravity: 1.06)
Synthetic bone: epoxy resin (specific gravity: 1.31)
Skull: epoxy resin (specific gravity: 1.11)
*Phantom has no metal parts or liquid structure

OPTIONAL PARTS

- 41363-070 storage cases (consist of 2 boxes)
- 41350-200-16 body plates for PH-2/2B (BMI 32)
- 41350-200-17 body plates for PH-2/2B (BMI 40)

Storage case P.12 ▶