

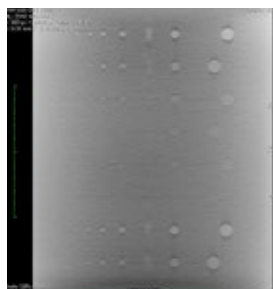
PH-57 | 41922-000

Thorax Low Contrast Phantom ODA-LC



For image evaluation of low contrast targets with CT, tomosynthesis as well as cone beam CT

Product Supervision:
Professor Nobuhiro Oda,
Kyoto College of Medical Science



FEATURES

- | Comparison between CT and tomosynthesis images
- | Three different plains with a single scan
- | A variety of nodules that simulate GGO
- | Quantitative evaluation of image quality using CNR of simulated nodules
- | Visual evaluation of image quality, using contrast detail diagram
- | Elliptical radiation absorber that simulate human body to study scattering effect of soft tissue

APPLICATIONS

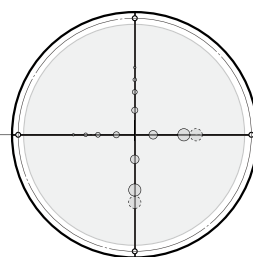
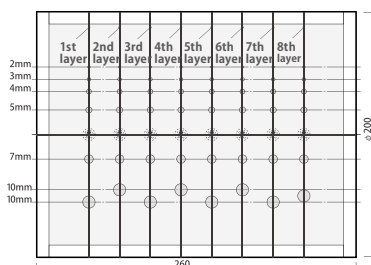
- | CT
- | Tomosynthesis

Modality	CT		tomosynthesis
Sectional Image			
Absorbed Dose	11.9mGy (CTDlvol)	0.4mGy (CTDlvol)	2.18mGy
Tube Voltage	120kv	120kv	100kv

DESCRIPTIONS

SPECIFICATIONS

Simulated nodules:
Sizes: 2,3,4,5, 7 and 10 mm
(0.08, 0.12, 0.16, 0.2, 0.28 and 0.4) dia. in
HU number: 0, -250, -375, -550, -640, -730, -780, -825



Specific gravity of simulated nodules
*Specific gravity of the background is 0.14

	specific gravity		specific gravity
1st layer	1.06 (0)	5th layer	0.24 (-780)
2nd layer	0.47 (-550)	6th layer	0.15 (-825)
3rd layer	0.35 (-640)	7th layer	0.75 (-250)
4th layer	0.26 (-730)	8th layer	0.64 (-375)

(): HU

MATERIALS

PP, polyurethane foam, polyurethane

