

# MRI Quality Assurance Phantoms



PH-31

MRI Quality Assurance Phantom  
MHR



PH-32B

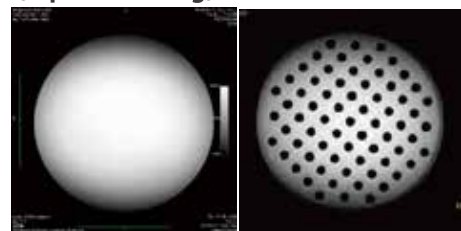
MRI Quality Assurance Phantom  
JMRII

# These phantoms incorporate a newly developed liquid paraffin filling, optimal for QA of 3.0 Tesla MRI.

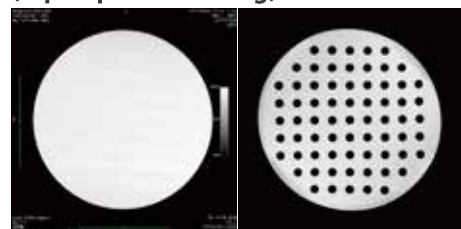
- Uniformity is maintained under the high magnetic field of 3.0 Tesla.
- Uniformity provides high precision evaluation for other parameters.
- The non-aqueous filling is stable and does not deteriorate over time.

\*Phantoms are filled with liquid paraffin at factory

Conventional 1T, 2T phantom under 3T (aqueous filling)

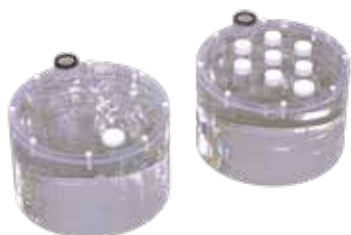


Redeveloped 3T phantom under 3T (liquid paraffin filling)



Complies with NEMA and AAPM standards

Complies with JIS Z4324 standard



PH-31

MRI Quality Assurance Phantom "MHR"



PH-32B

MRI Quality Assurance Phantom "JMRII"

## Specifications

### ■ Evaluation Parameters:

- Signal-to-noise ratio (SNR)
- Image uniformity
- RF uniformity
- Spatial resolution
- Spatial linearity (image distortion)
- Slice thickness
- Slice position / separation
- Image contrast
- Image artifact

■ Dimensions: 220 × 140 mm × 2 types

■ Weight: About 5.3 kg each

■ Material: PMMA (acrylic resin)

## Specifications

### ■ Evaluation Parameters:

- Signal noise ratio (SNR)
- Image uniformity
- Slice thickness
- Spatial resolution
- Geometric distortion
- Ghost
- Image contrast

■ Dimensions: 180 × 130 mm

■ Weight: about 3.3 kg

■ Material: PMMA (acrylic resin)

Specifications are subject to change without prior notice.

 **KYOTO KAGAKU co.,LTD**

 <http://www.kyotokagaku.com>

 [rw-kyoto@kyotokagaku.co.jp](mailto:rw-kyoto@kyotokagaku.co.jp)

### Hong Kong Representative Office

Level 60, One Island East,  
18 Westlands Road, Island East, Hong Kong

 +852-3978-1365  +852-3978-1199

### Worldwide Inquires and Ordering Head Office and Factories

15 Kitanechoya-cho, Fushimi-ku,  
Kyoto, 612-8388, Japan

 +81-75-605-2510  +81-75-605-2519

### European Representative Office

De-Saint-Exupery-Str.10,  
60549 Frankfurt, Germany

 +49-69-5060-28160  +49-69-5060-28170



All American regions  
**KYOTOKAGAKU AMERICA INC.**

 <http://www.kkamerica-inc.com/>  
\* United States only

 [info@kkamerica-inc.com](mailto:info@kkamerica-inc.com)

3109 Lomita Boulevard, Torrance,  
CA 90505-5108, USA

 +1-310-325-8860

 +1-310-325-8867