



# Pediatric Chest Phantom

PH-1C



## Imaging and dosimetry for radiosensitive 5-year-old

Chest X-ray is one of the most common examination in pediatric radiography. This Pediatric Chest Phantom is designed to find out optimal parameter and protocols to minimize radiation exposure to children. The phantom has two kinds of interchangeable lung inserts. The lung vascular insert can be used to study image quality in relation to CT/X-ray protocols. The lung density insert allows users to evaluate dosage distribution in the lung field.


**KYOTO KAGAKU co.,LTD**

Worldwide Inquiries & Ordering

<http://www.kyotokagaku.com>

E-mail: [rw-kyoto@kyotokagaku.co.jp](mailto:rw-kyoto@kyotokagaku.co.jp)

**Kyotokagaku Head Office and Factories:**

15 Kitanechoya-cho, Fushimi-ku, Kyoto, 612-8388, JAPAN

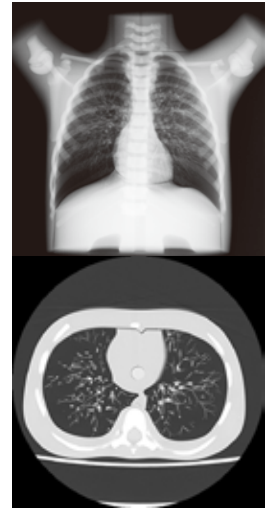
Tel: +81-75-605-2510 Fax: +81-75-605-2519

# Pediatric Chest Phantom



## FEATURES

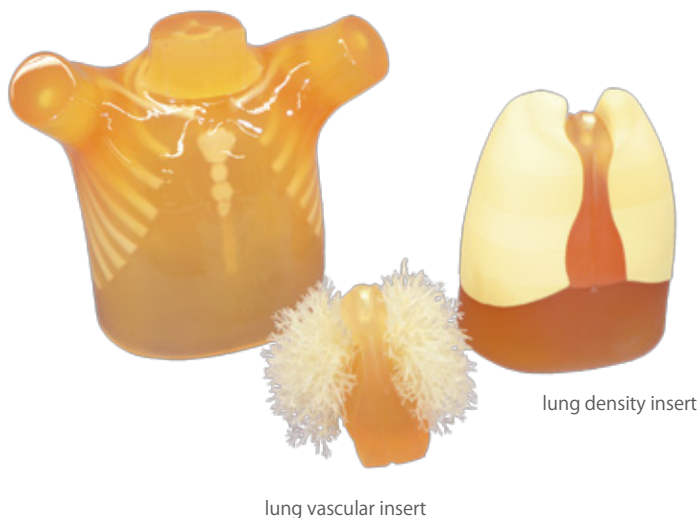
- Two types of interchangeable lung inserts are available.  
-lung vascular insert and lung density insert.
- Pencil-shaped ion chamber for CTDI can be set in the mediastinum.
- TLD or RPL dosimeters can be set in the thyroid block and the lung density insert.
- Lung vascular inserts with pulmonary vessels provide life-like radiographs.
- Detachable internal structure allows insertion of variety of pathologies and targets.
- Simulates a life-size chest of 5-year-old.



## Anatomies

Rib, clavicle, spine, mediastinum, scapula, sternum and pulmonary vessel

## Two types of lung inserts



TLD or RPL dosimeters can be set in the thyroid block.

## Applications

Pediatric Chest X-ray  
Pediatric Chest CT  
Dosimetry

## Specifications

### Set Includes:

- 1 five-year-old chest torso  
main body: synthetic bones are embedded
- thyroid block
- diaphragm block
- 1 lung vasculature insert: mediastinum with pulmonary vessels
- 1 lung density insert: mediastinum, lung fields (L,R)
- 1 set of sample images
- 1 instruction manual

### Size:

phantom size: 32 x 17 x 38 cm/12.6 x 6.7 x 15 inch  
weight: 6 kg/3.2 lb

