

Epidural Anesthesia Simulator

Anatomically correct spinal column covering from T7 to L5.

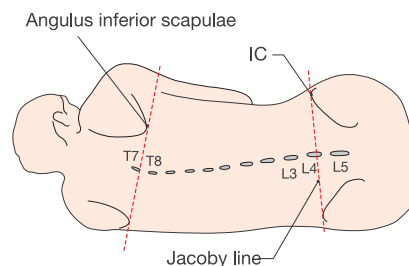
Landmarks for palpation: IC, angulus inferior scapulae and spinous process.

True-to-life resistance and “pop” felt through the needles. Both left and right lateral position are possible.



Training items:

- Epidural anesthesia procedures at lumbar and thoracic area
- Lumbar puncture



Landmark Palpation

IAS, IC and spinous processes can be palpated to find a needle insertion point.



Epidural Anesthesia

True-to-life resistance and “pop” felt through the needles. Loss of resistance technique is possible. The broad puncture pad allows paramedian access as well as median approach.



Lumbar Puncture (CSF collection)

The model can also be used in spinal tap training at the lumbar area.



Epidural Anesthesia Simulator MW3

Set includes:

- 1 life size unisex torso
- 5 puncture pad
- 1 supporting Stand
- 1 syringe (50 ml)

Replacement parts

- 11382-010 replacement puncture pad (a set of 2)

Specifications are subject to change.

KYOTO KAGAKU

15 Kitaneokoya-cho, Fushimi-ku,
Kyoto, 612-8388, JAPAN
Tel: +81-75-605-2510
Fax: +81-75-605-2519
www.kyotokagaku.com
rw-kyoto@kyotokagaku.co.jp