



Two interchangeable inserts to cover basic OB-GYN ultrasound

Female Pelvic Ultrasound Phantom facilitates teaching and learning how to practice both transvaginal and transabdominal ultrasound procedures using one's own device.

Features

1. Both transvaginal and transabdominal scanning are possible.
2. Two types of interchangeable phantom inserts with different pathologies
3. Realistic view of female external genital
4. Excellent ultrasound image quality

Training Skills

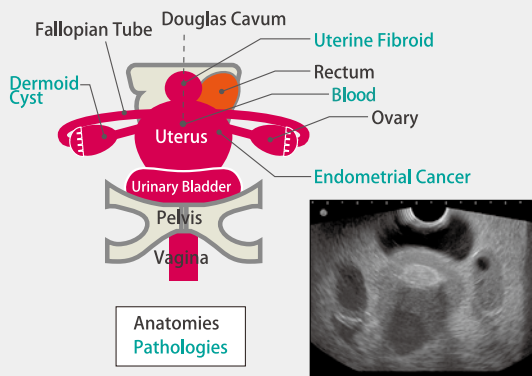
- Handling and manipulation of transvaginal and transabdominal transducers
- Interpretation of sonogram
- Visualization and localization of anatomies and pathologies

Product Supervision

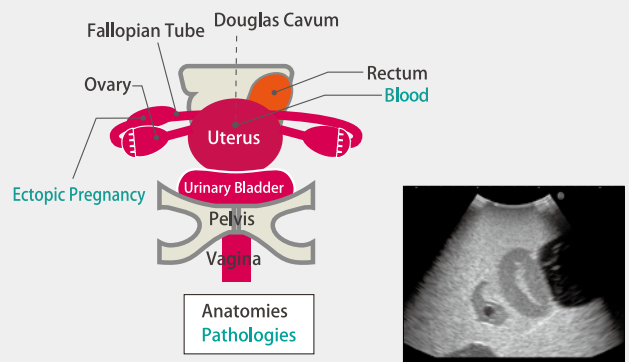
Charlotte Henningsen, MS, RT(R), RDMS, RVT, FSDMS, FAIUM
 Chair & Professor - Sonography Department
 Adventist University of Health Sciences

Anatomy

- Pathological Phantom: endometrial cancer, uterine fibroid, dermoid cyst of ovary, blood in pouch of Douglas



- Ectopic Phantom: ectopic pregnancy in a fallopian tube, blood in pouch of Douglas



Specifications :

Set Includes:	Manikin Size:
1 mother body torso	W34 x D33 x H24 cm
1 ultrasound pathology unit	
1 ultrasound ectopic pregnancy unit	
1 storage case	
Replacement Parts:	
(41909-030) 1 ultrasound pathology unit	
(41909-040) 1 ultrasound ectopic pregnancy unit	

* Ultrasound machines are not included.

US-10a Female Pelvic Ultrasound Phantom with 3 units



Includes a normal unit, an ectopic pregnancy unit and pathology unit.