

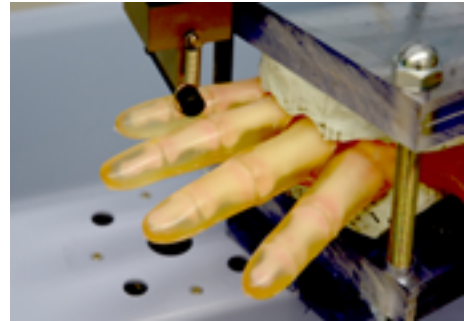
TOUGH Whole Body Phantom "PBU-90 RUGGED"

New phantom material is designed for rough handling, improved durability and low maintenance.

Skeletal system with embedded lungs, heart, liver and kidneys. PBU-90 includes a whole body phantom (separable into 10 parts) and head supporter. Freely articulating joints allow for realistic positioning.



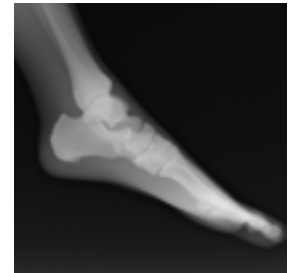
Features



Durability testing



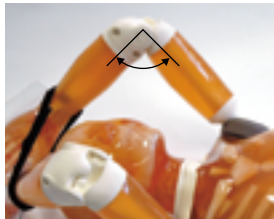
Open hand position



Main joints have close-to human articulation



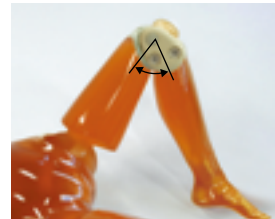
Shoulders:
rotate full 360 degrees in the sagittal plane, approx. 180 degrees to side-ways.



Elbows:
bend up to approx. 90 degrees.



Hip Joints:
rotate forward up to approx. 90 degrees, then abduct up to 45 degrees each.



Knees:
bend up to approx. 90 degrees.



An adjustable head supporter comes with the set, facilitating various head position setting.

41363-070 Storage Case II for PH-2/2B/60 (a pair)

