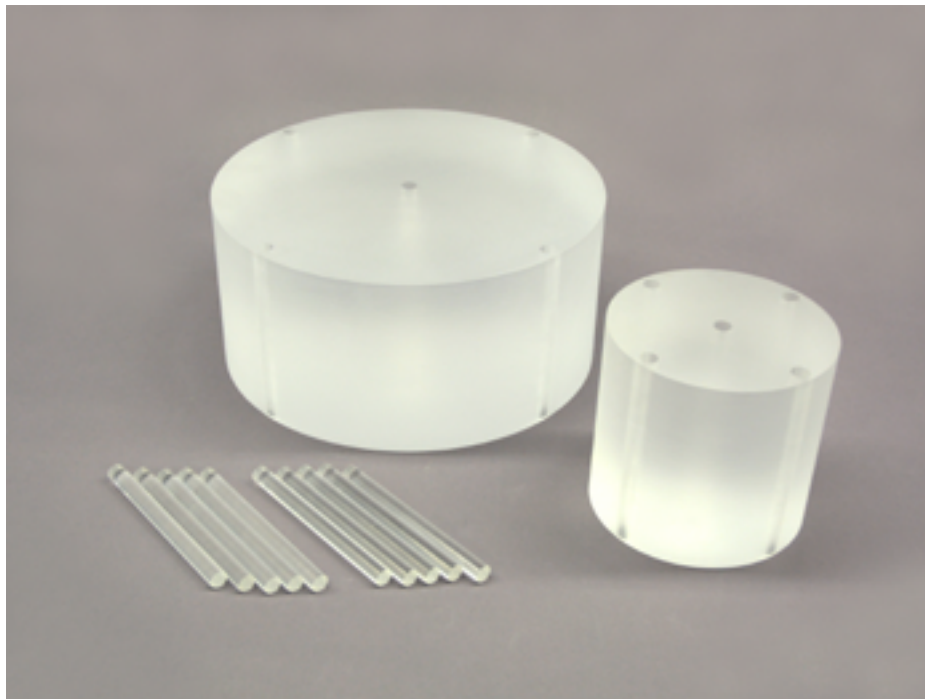


CT-DI Phantom (Head and Body Phantom)

A set of phantoms for CTDI-100, conforming to requirements described in JIS Z 4752-3-5:2008 (IEC 61223-3-5 : 2004) as acceptance test, and JIS Z 4752-2-6:2012 (IEC 61223-2-6 : 2006) as consistency test.



Specifications

Phantom size and weight

Body phantom:

32 dia. x 15 cm, 15kg

12.6 dia. x 5.9 in, 33lb

Head phantom:

16 x 15 cm, 4kg

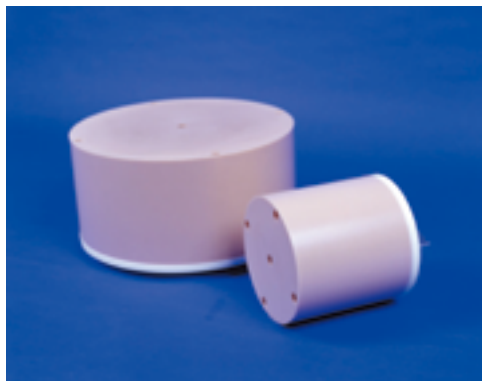
6.3 x 5.9 in, 8.8lb

Materials: Acrylic resin

Accessory: Storage case

Custom order example: head and body phantom in different types of tissue substitutes

The set of head and body phantom made of PH-40



*Custom order example