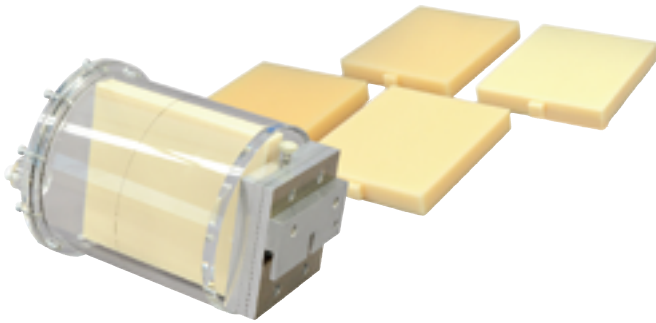


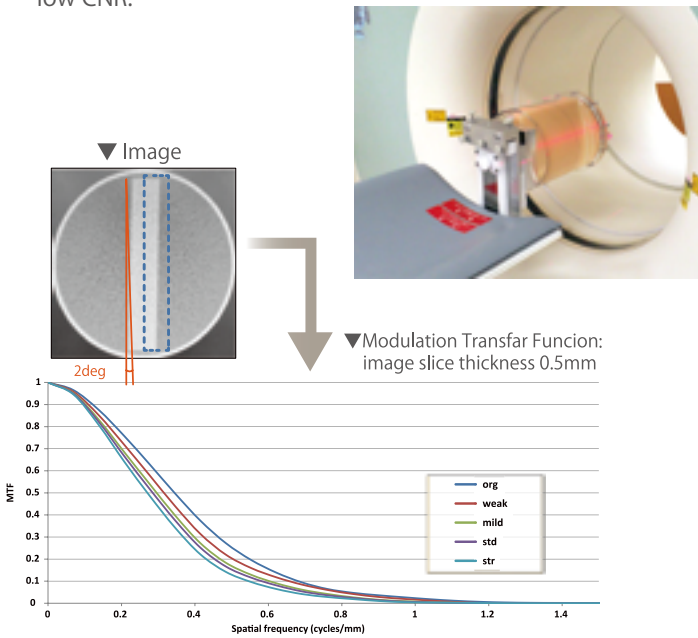
CT ERF Phantom HIT

A phantom designed for physical evaluation of iteratively reconstructed images under low CNR.



Features

1. The phantom is designed to physically and quantitatively evaluate iteratively reconstructed images in the low CNR area, such as abdomen, where MTF of PSF is less useful comparing to high CNR area.
2. The phantom uses edge spread function (ESF) to calculate MTF of the low CNR images, which facilitate assessing performance properties of iteratively reconstructed images under low CNR.



Specifications

Set Includes:
 Cylindrical container (200 mm dia.)
 Measurement plates: 5 variations;
 HU20, 50, 100, 200 and 500
 Rotation holder
 Fixture for the cylindrical container

Size:
 phantom size: 20 dia. x 25 cm
 7.9 dia x 9.8 in
 phantom weight: 4.5 kg
 9.9 lb

Materials:
 Acrylic resin, polyurethane

Optional part:
 41919-010
 Angle adjustment holder
 (table-top type)

Optional part

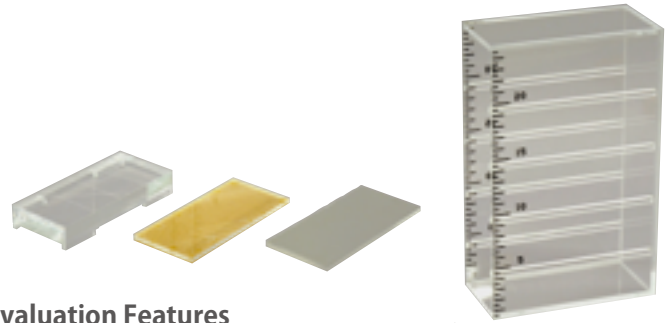
41919-010
 Angle adjustment holder (table-top type)

Compatible with PH-9



Tomosynthesis Phantom NS

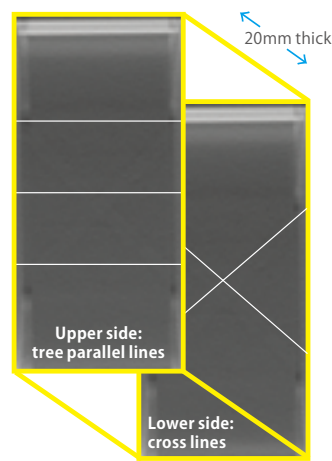
The phantom is designed for daily quality control of Tomosynthesis, allowing evaluation of reconstruction slices and uniformity in the measurement of slice thickness through showing the images numerically and graphically. It is also useful in evaluation of image quality that varies depending on reconstruction function.



Evaluation Features

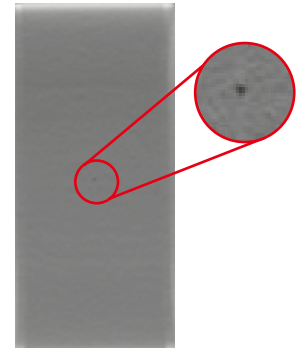
1. Verification of slice thickness in reconstruction
2. Measurement of slice thickness
3. Verification of uniformity

Reconstruction positioning unit



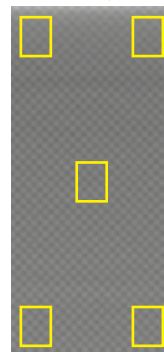
For verification of the special positioning in reconstruction
 Stainless steel line: 0.1 mm/0.004 in dia.

Slice thickness unit



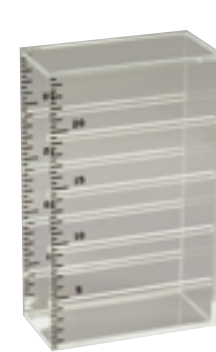
For calculation of slice thickness using FWHM
 Hole: 1.0 mm/0.04 in dia.
 Aluminum plate: 0.5mm/0.02 in thick
 Acrylic plate 5mm/0.2 in thick.
 *the aluminum plate is sandwiched between layers of Acrylic
 70 x 150 mm/2.8 x 5.9 in

Uniformity unit



For evaluation of uniformity and tilting of the examination table
 70 x 150 mm/2.8 x 5.9 in

Height setting rack



Test units can be set in the aluminum supporting box at 10, 15 or 20 mm (0.4, 0.6 or 0.79 in) height

Specifications

Set Includes:
 1 Reconstruction positioning unit
 1 Slice thickness unit
 1 Uniformity unit

