

Pediatric Whole Body Phantom "PBU-70"



This Phantom is easy to handle positioning, and provides complete bone images for every joint.

Pediatric Whole Body Phantom is modeled after a 5-year-old child of 105cm (43") in height. This is a life-size, full body anthropomorphic phantom with a state-of-the-art synthetic skeleton, lungs, liver, mediastinum and kidneys. Its movable and detachable joints allow various positioning.



Features

1. Main joints have life-like articulation, allowing various positioning for plain X-ray.
2. Training and research applications can be enriched by disassembling the phantom into 10 individual parts (head, limbs and trunk).
3. The phantom has no metal parts or liquid structures.
4. No defect in bone images of joints.

Anatomies

- Full synthetic skeleton
- Main pulmonary vessels, mediastinum, liver, kidneys

Training Skills

- Plain X-ray photography and basic CT scanning
- Basic patient positioning for X-ray and CT

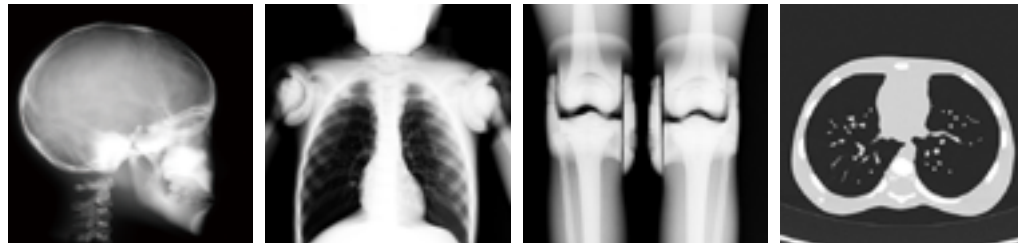
Specifications

Set Includes:
 1 pediatric whole body phantom:
 - life-size, 5-year-old consists of 10 parts
 1 head supporter
 1 hand fixture belt
 1 set of sample X-ray images

Size:
 phantom height:
 110 cm/43.3 in

phantom weight:
 20 kg/44 lb

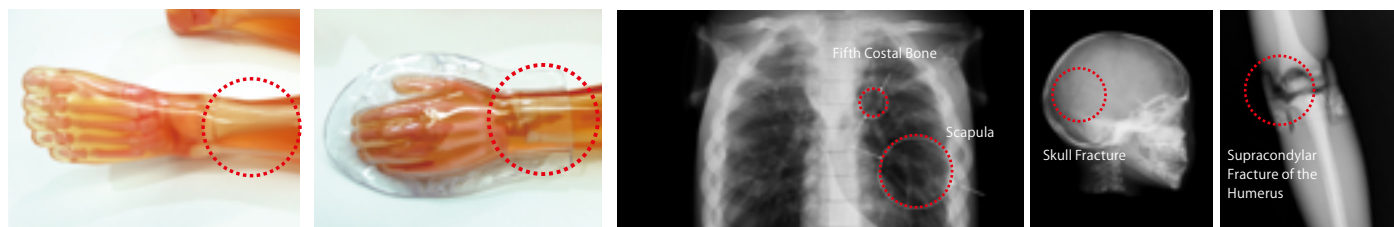
Optional Parts:
 41363-080
 storage case for PH-2C



Bone Fracture Pediatric Phantom "PBU-70B"

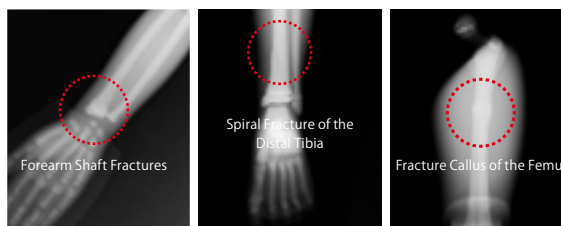
Improve your skills in detecting bone fractures in children.

Training in pediatric radiography can be enriched with clear and subtle bone fractures. Typical fractures resulting from child abuse are also included.



Spiral Fracture of the Distal Tibia Forearm Shaft Fractures

All fractures are prepared on the left side of the phantom.



* Specify with or without adult teeth at the time of order.