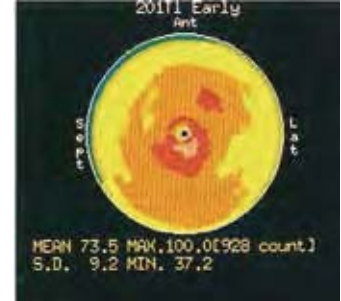
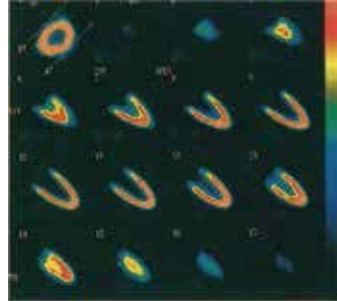


# Myocardial Phantom

Myocardial SPECT phantom HL allows for the study of high radio accumulation interference in the liver with the Myocardial SPECT images.



## Features

1. Allows the study of RI liver intake and its effect on the myocardial SPECT.
2. Cold defect can be set in the left cardiac muscle.
3. Background can be set individually in lung field, mediastinum and right ventricle.

## Specifications

Size:  
32×22×31cm  
12.6 x 8.66 x 12.2 inch

Materials:  
main container: acrylic resin

41531-000

# Brain Phantom IB-20 advanced



This brain phantom of the striatal region with replicated skull densities of a male and female is useful for taking ratio calibrations and studying the I-123 DaTSCAN scatter correction techniques.

