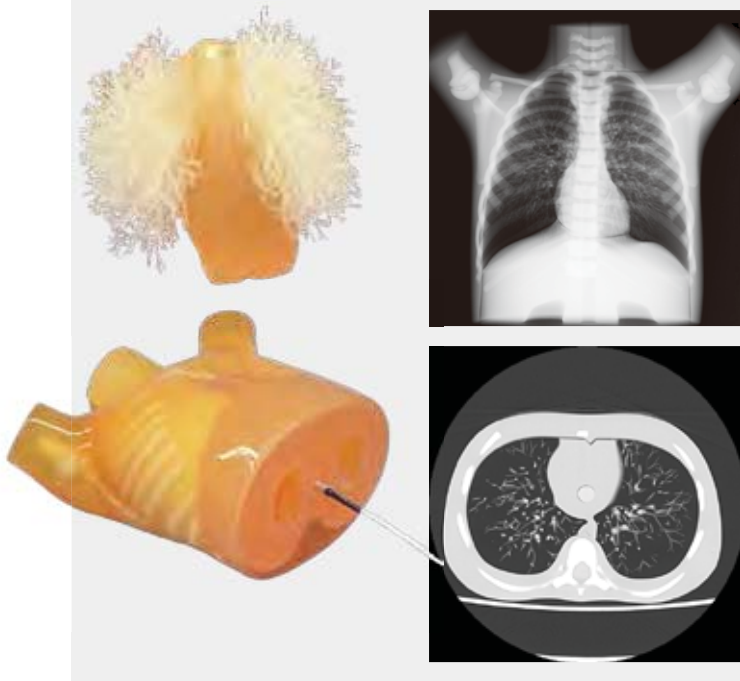


Two types of lung inserts



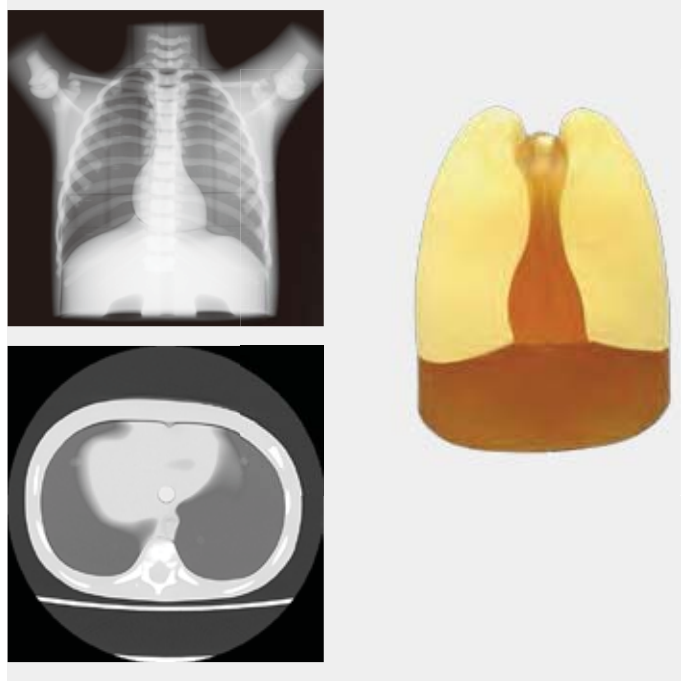
01 Lung vascular insert A+B+D for imaging

These lungs represent anatomical structures of pulmonary vessels including capillary vessels and provide realistic X-ray/CT images for training.



02 Lung density insert A+C+D for dose mapping

The lungs are designed to allow insertion of TLD or RPL glass dosimeter to evaluate dose distribution. Dosimeter holes are designed at both lung fields.



Pencil-shaped ion chamber can be set in the diaphragm for CTDI measurement.
(Dosimeter type: 14mm ϕ pencil-shaped ion chamber)