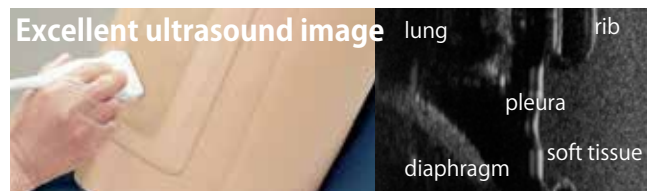


**Product Supervision**

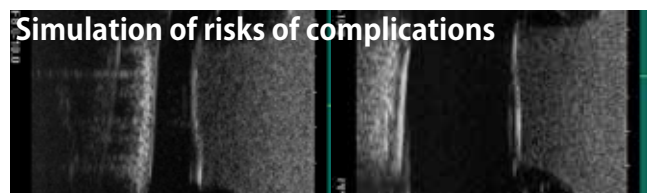
Takahiro Amano, M.D.
 Vice President
 Senior Vice-Dean, Postgraduate School
 Professor and Director, Center of Postgraduate Medical Education
 International University of Health and Welfare
 Honorary Director, Sanno Medical Center



Anatomy includes: ribs, pleura, soft tissue and diaphragm



Realistic needle-tip resistance and needle insertion



Volume of pleural effusion can be controlled to different levels

Thoracentesis simulator both for table top and hybrid training session with patients

Ultrasound-Guided Thoracentesis Simulator features two types of puncture units: mid-scapular line access and mid-axillary line access. Strap-on (wearable) puncture units facilitates hybrid training sessions with SPs.

Features

1. Excellent ultrasound image
2. Ribs can be palpated
3. Realistic needle-tip resistance and needle insertion
4. Strap-on puncture units to learn patient positioning and face-to-face communication
5. Two sites for access:
right mid-scapular line and left mid-axillary line
6. Volume of pleural effusion can be controlled to set different levels of difficulty.
7. Body torso for independent training. (Only for MW4)

Training Skills

- Patient positioning
- Recognition of anatomical landmarks by ultrasound
- Assessment of level and volume of pleural effusion
- Determination of insertion site
- Needle insertion and collection of fluid



Mid-axillary line unit: 6-9th ribs
 Mid-scapular line units: 8-11th ribs



Strap-on puncture units to learn patient positioning and face-to-face communication



Explanation model to facilitate anatomical understanding