

MW48

NEW

Full Perinatal Patient Care Simulator “Hana”

Be a part of Hana's journey as a new mother

Training manikin which covers from gestational to post-natal periods
Let us help you take your first step in perinatal care!



FEATURES

- 1 | Interchangeable abdomen to simulate perinatal examination, ultrasound examination at 23-weeks-fetus, cervical examination, labor, perineal tear and puerperal.

POINTS



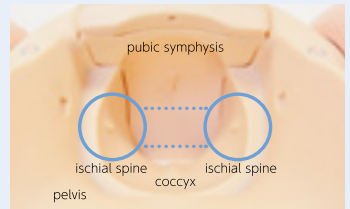
One-touch interchangeable parts



Compatible with birthing chairs



Durable yet realistically elastic



Accurate anatomy

SKILLS

- Nasogastric tube feeding
- Airway management, Intubation assistance
- Oral and denture care
- Oxygen mask
- Stomach pumping
- Suction
- Intravenous injections and cannulation (Left median vein)
- Cannula care (Left dorsal vein)
- Urinary catheterization
- Genital care
- Check procedures in case of amniorrhexis, bleeding and lochia
- Optional Add-ons
 - IM injections (upper arm)
 - SC injections (upper arm)
- Normal breast and nipple assessment
- Chest compressions
- Epidural placement
- IV route care (dorsal vein of left hand)

Perinatal examination

During pregnancy

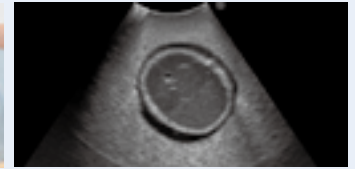
Perinatal examination

- | Palpation (e.g. using Leopold's maneuvers, cephalopelvic disproportion assessment)
- | Repositionable fetus
- | Auscultation of fetal sounds, with adjustable heart rates from 60 to 180
- | Measurable abdomen girth, fundal height and external pelvimetry



Ultrasound examination

- | Screening of 23 weeks fetus
- | Fetal size assessment using BPD, AC, FL, and so on
- | Measurement of amniotic fluid volume
- | Determination of fetus presentation



Childbirth

Cervical examination

- | 5 types of cervical dilation models
- | Determination of 'bishop score (cervix score)
- | Check fetal head position



During labor

- | Various positions: Supine, lateral, all-fours
- | Perineal protection
- | Cephalic and breech presentations
- | Obstetric forceps delivery and vacuum extraction delivery
- | Tying and cutting of the umbilical cord
- | Delivery of the placenta
- | Inspection of the amniotic sac
- | Insertion of urinary catheter



Perineal tear

- | Perineorrhaphy:
 - single interrupted suture
 - vertical mattress suture
- | Repetitive suture practice for first degree perineal tear



Puerperal

Puerperal assessment

- | Assessment uterine involution in early puerperium: 4 types of variations
- | Measurement and palpation of uterine fundus
- | Perineal cleaning and assessment
- | Postpartum massage
- | Assessment of anal prolapse



DESCRIPTIONS

SPECIFICATIONS

Size: 164 cm/ 63 inch Weight: 20 kg/ 2.2 lbs

SET INCLUDES

1 manikin	1 injection pad (median vein)
1 wig	1 irrigation bag
1 face mask for Konoha/Hana	1 drainage pump /drainage hose
1 denture	1 lubricant for training models
1 female genitalia for Konoha	1 talcum powder
1 maternity clothes	1 instruction manual
1 towel	

MATERIALS

Soft resin
Latex free

REPLACEMENT PARTS

11229-050	lubricant for training models
11251-030	replacement shoulder IM pads
11416-040	velamen sheets
11416-030	10 umbilical codes for omphalotomy
11417-010	genitalia inserts
11415-020	lubricant for MW35/36/40

RECOMMENDED DEVICES

11406-040	wig
11415-030	genitalia unit
11415-010	cervical dilation inserts
11416-020	placenta
11406-050	printer