

MW39



NEW

Endoscopy Training System (ETS)

Specifically designed to meet the new training requirements by the American Board of Surgery Flexible Endoscopy Curriculum

This system consists of a straight colon unit and an anatomical colon unit which allows learners to gain endoscopic skills through practice.



FEATURES

- 1 | Fundamental scope navigation skills using dials and torque
- 2 | Basic tool skills
- 3 | Working in retroflexion
- 4 | Preventing, managing and reducing loops
- 5 | Thorough mucosal inspection

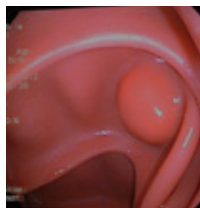
SKILLS

Straight colon model

- | Scope Manipulation
- | Tool Targeting
- | Retroflexion

Anatomic colon model

- | Loop Management
- | Mucosal Inspection



DESCRIPTIONS

SPECIFICATIONS

MATERIALS

SET INCLUDES

1 anatomic colon model	1 extra glue patch
1 abdomen cover	1 AC adapter
1 stand	30 concentrated lubricant
1 anti-slip mat	30 endoscope lubricant
1 straight colon model	1 colon end cap
1 simulated biopsy tool	1 plastic bottle
1 scope manipulation screen overlay	1 spatula
	1 instruction manual

REPLACEMENT PARTS

11419-010	Straight colon tube
11419-020	Colon-rectum tube
11419-030	Colon tube fixtures (7 rings without spring, 3rings with spring)
11361-040	Lubricant for colon-rectum tube (blue packs) 30 pcs
11361-050	Endoscope lubricant (pink packs) 30 pcs
11419-040	simulated biopsy tool

* Endoscope is not included.

