



Comprehensive, hands-on training for PICC insertion

This model provides training in full procedural skills from needle insertion, manipulation of the PICC to the placement of the distal tip in the SVC. Both basilic and cephalic veins are accessible for different levels of difficulty in cannulation. Replaceable puncture pad is ultrasound-compatible.

Anatomically correct bifurcation of the vein provides realistic resistance on its outer walls and simulates complications such as catheter malpositioning.



Puncture site selection



Ultrasound guided puncture



Guide wire insertion



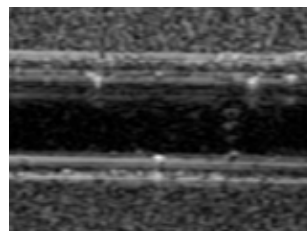
Cannulation

Features

1. Excellent image quality and visualization of the needle tip for ultrasound guided venous access
2. Movable shoulder to demonstrate positioning
3. Realistic flashback in needle provides confirmation for successful venous access
4. Ribs and right clavicle provide anatomical understanding of correct PICC placement
5. Anatomically correct bifurcation of the vein
6. Simulation of cannula malposition

Training Skills

- Correct needle insertion, PICC, manipulation and catheter tip placement
- Selection a puncture site under ultrasound guidance
- The Seldinger technique
- Technique for the peel-away sheath
- Advancing of the cannula into the SVC



Movable shoulder



Disposable ultrasound puncture pad

Specifications :

Set Includes:	Manikin Size:
1 male upper torso with the right arm	W40 x D15 x H60 cm
2 PICC puncture pads	Replacement Parts:
10 simulated blood (swab type)	(11348-010)
1 jar	2 PICC puncture pads
1 syringe	
1 instruction manual	
1 storage case	

* A ultrasound machine and PICC instruments are not included.