

MW14



Difficult Airway Management Simulator -Demonstration Model-

Great addition to a demonstration tool for airway management

Compact table-top design, anatomical accurate and a variety of DAM settings.
Ideal for demonstration of skills and devices.



FEATURES

- 1 | Anatomically correct airway
- 2 | The incisors are removable when excessive force is applied.
- 3 | Successful tube tip placement can be confirmed by indicators.

SKILLS

- | Airway opening techniques (head tilt, jaw thrust)
- | Bag-Valve-Mask ventilation
- | Pre-intubation airway assessment
- | "Sniffing position"
- | Pressurization of external larynx to improve the laryngeal view
- | Intraoral/Intranasal Intubation
- | Use of oropharyngeal airway (OPA)
- | Use of nasopharyngeal airway (NPA)
- | Use of laryngeal mask airway
- | Use of video laryngeal scope
- | Confirmation of successful ventilation by indicators.
- | Feedback of incorrect procedures including esophagus intubation and unilateral intubation
- | Securing the tube in place with tape or Thomas™ endotracheal tube holder

DESCRIPTIONS

SPECIFICATIONS

Size: W45 x D20 x H25 cm
W17.7 x 7.9 x H9.8 inch

Weight: 2.65kg/ 5.84lbs

Power:
Power Consumption:

SET INCLUDES

1	manikin	1	syringe
3	upper incisors	1	carrying bag
1	lubricant	1	instruction manual

MATERIALS

Soft resin
Latex free

REPLACEMENT PARTS

11393-020	1	face mask
11392-080	2	replacement tongues II
11392-010	10	upper incisors
11229-050		lubricant

RECOMMENDED DEVICES

(Macintosh laryngoscope) blade size 3,4
(Endotracheal tube) internal diameter
7.0mm, 7.5mm
(Laryngeal mask) Air-Q: size 3.5
LMA Supreme: size 4
I-gel: size 4

* Instruments are not included.

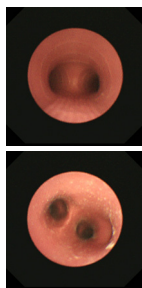
MW19



Difficult Airway Management Simulator for Bronchofiberscopy

Realistic trainings in insertion and management of a fiberscope

Anatomically correct trachea and bronchi provides realistic view through a scope,
allowing recognition of bifurcations.



FEATURES

- 1 | Anatomically correct trachea and bronchi that include trachea bifurcation for segmental bronchi.

SKILLS

- | Insertion and management of a fiberscope
- | Recognition of bifurcations by a fiberscope
- | Airway opening techniques (head tilt, jaw thrust)
- | "Sniffing position"

DESCRIPTIONS

SPECIFICATIONS

Size: W45 x D20 x H25 cm
W17.7 x 7.9 x H9.8 inch

Weight: 2.65kg/ 5.84lbs

SET INCLUDES

1	manikin	1	instruction manual
3	upper incisors		
1	lubricant		
1	syringe		
1	carrying bag		

MATERIALS

Soft resin
Latex free

REPLACEMENT PARTS

11393-020	1	face mask
11392-080	2	replacement tongues II
11392-010	10	upper incisors
11229-050		lubricant

RECOMMENDED DEVICES

(Macintosh laryngoscope) blade size 3, 4
(Endotracheal tube) internal diameter
7.0mm, 7.5mm
(Laryngeal mask) Air-Q: size 3.5
LMA Supreme: size 4
I-gel: size 4

* Instruments are not included.

