

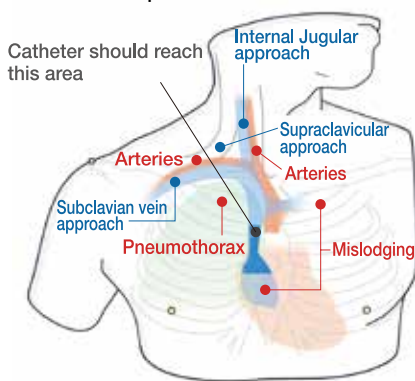


Product Supervision

Masahiro Tanabe, M.D., Ph.D., Professor Director General Medical Education Center Chiba University School of Medicine
 Kinya Sando, M.D., Ph.D., Professor Director Department of Human Dietetics Graduate School of Human Science Osaka Shoin Women's University
 Masanori Hoki, M.D., Ph.D., Professor Department of Human Dietetics Graduate School of Human Science Osaka Shoin Women's University
 Joho Tokumine, M.D.Ph.D., Department of Anesthesia, Kawatetsu Chiba Hospital

Training Skills

- Ultrasound-guided CVC
- Landmark guided CVC
- Ultrasound-guided venous access
- Prevention of mechanical complications



Great practice simulator for CVC catheter insertion with a variety of methods

CVC Insertion Simulator II offers training in both landmark and ultrasound-guided central venous catheterization. The simulator is designed to develop trainees' skills in sequence using the introductory training block and the anatomical block. The simulator can also simulate common complications such as mislodging.

Features

1. Realistic ultrasound-guided CVC
2. Landmark puncture pad with anatomically correct vein bifurcations simulates mechanical complications include pneumothorax, mislodging and artery puncture
3. Transparent anatomical block for anatomical understanding and guide wire manipulation
4. Introductory ultrasound training block to acquire basics of ultrasound guided venous access
5. Both internal jugular and subclavian (axillary) veins are accessible



Specifications :

Set Includes:		Manikin Size:	Replacement Parts:
1 male upper torso manikin	1 blue coloring powder	W40 x D20 x H 34 cm	(11347-119) 2 landmark puncture pads
1 landmark puncture pad	1 air bulb		(11347-170) 2 ultrasound puncture pads
1 ultrasound puncture pad	2 plastic jars		(11347-210)
1 transparent anatomical block	1 irrigation bottle		2 introductory ultrasound training blocks
1 introductory ultrasound training block	1 syringe		(11347-240) 2 CVC placement pads
1 red coloring powder	1 sample syringe		(11347-260) 1 pulsation unit (for M93UB)
	1 sample needle		

* Ultrasound machine and CVC instruments are not included.