

Training Skills

- Ultrasound-guided CVC
- Landmark guided CVC
- Ultrasound-guided venous access
- Prevention of mechanical complications



Palpation



Flash-back confirmation



Advancing the guide-wire and threading the dilator



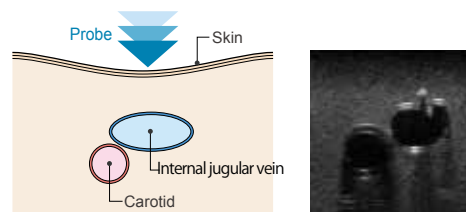
Cannulation

CVC Insertion Simulator III provides training in a sequence of procedural skills from the needle insertion to catheter placement, including Seldinger technique.

CVC Insertion Simulator III provides training opportunities in array of procedural skills from determining the insertion site placement of the catheter without interruption. Landmark and ultrasound-guided catheterization in one pad.

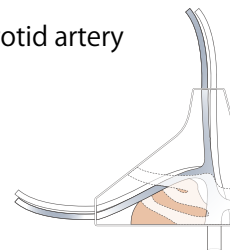
Features

- 1. Repeated insertion:**
Improved frictionless tissue of the pad allows Seldinger technique and repeated insertion and removable of the catheter with less needle marks left on the surface of the pad.
- 2. Both landmark and ultrasound-guided CVC:**
Anatomically correct structure facilitates training in both landmark and ultrasound-guided CVC.
- 3. Mechanical complications, such as arterial puncture and pneumothorax can be simulated for training.**
- 4. New material**
Close to human tissue material of the pad provides true-to-life sensation to the catheter.
- 5. Realistic venous collapse**



Anatomy

- Internal jugular vein & carotid artery
- Subclavian vein & artery
- Superior vena cava
- Ribs
- Sternum
- Lung



Specifications :

Set Includes:		Replacement and Optional Parts:
1 male upper torso manikin	1 pulsation unit (for landmark technique)	(11347-210) 2 introductory ultrasound training block REAL VESSELS
2 CVC placement pad	1 irrigation bottle (for UG technique)	(11347-240) 2 CVC placement pads
1 skin for cannulation training	1 plastic jar	(11347-260) 1 pulsation unit (for M93UB)
1 transparent anatomical block	1 coloring powder (red/blue)	
2 artery tube (transparent): 2 type	1 sample needle	
2 vein tube (blue): 2 type	1 syringe (2.5ml, 50ml each)	Manikin Size:
2 vein pipe	1 introductory ultrasound training block REAL VESSELS	W40 x D20 x H 34 cm

* Ultrasound machine and CVC instruments are not included.