



### Product Supervision

Japan Society for Medical Education  
Working Group with the cooperation of:  
Kansai Medical University Department of Ophthalmology



### Cases

1. Normal eyeground
2. Hypertensive retinopathy:  
arteriolar vasoconstriction grade 3, arteriolosclerosis grade 1, hemorrhages and cotton wool spots, simple vein concealment
3. Simple/background diabetic retinopathy:  
microaneurysm, hemorrhages and hard exudates
4. Papilloedema (chronic phase)
5. Papilloedema (acute phase)
6. Glaucomatous optic atrophy:  
glaucomatous optic disc cupping and nerve fiber defect
7. Retinal vein occlusion (acute phase):  
flame-shaped hemorrhage and cotton wool spots
8. Retinal vein occlusion  
(after retinal laser photocoagulation)
9. Toxoplasmosis: retinochoroiditis
10. Age-related macular degeneration:  
macular exudates and subretinal hemorrhage

### Specifications :

Set Includes:	
1 manikin head and shoulder	1 set of case slides
- 3 steps (2, 3.5, 5 mm diameter)	1 slide duster
- 1 slide holder with 3 steps depth setting	1 storage case
1 instruction manual	
Replacement Parts:	
(1120-010) 1 replacement fundus case slides (set of 10 cases)	
Manikin Size:	
W42 x D22 x H38 cm	

### Fundus examination with 10 clinical images and variations of 3 pupil sizes and depth of focus.

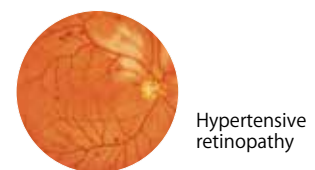
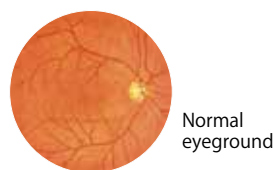
EYE Examination Simulator is an innovative trainer for fundus examination, designed to allow examination of eyegrounds with the physician's own ophthalmoscope. Various cases can be set up for trainees using combinations of slides, depth and pupil diameter.

### Features

1. 10 cases of fundus slides are provided for training in identifying common eye diseases.
2. The slide images are from actual clinical images.
3. The lens-equipped eyeball units reproduce the visual axis close to that of the human eye providing a realistic eyeground view.
4. Soft and supple material of the manikin allows hands-on practice of examination procedures, such as raising the eyelid.
5. The depth of the fundus slides can be set in 3 levels: hyperopic, normal, and myopic views.
6. Red reflection can be simulated.

### Training Skills

- Fundus examination



### M82A EYE Examination Simulator (2 steps)

#### Fundus examination with 10 clinical images and variations of 2 pupil sizes and depth of focus.

Different sizes of pupil can be set at 2 sizes.  
(0.14 and 0.32 in diameter)

