

SINCE  
1948

KYOTO, TOKYO, NAGOYA AND SENDAI, JAPAN  
LOS ANGELES, USA  
HONG KONG, CHINA  
FRANKFURT, GERMANY  
DISTRIBUTORS ALL OVER THE WORLD



 **KYOTO KAGAKU**

# PRODUCT CATALOG

Simulators, Ultrasound Phantoms and Anatomical Models  
**SU-1**

# PRODUCT CATALOG SU-1

# PRODUCT CATALOG SU-1

## CONTENTS

### Obstetrics / Neonatal / Pediatric / Gynecology

US-10 Female Pelvic Ultrasound Phantom P.6	US-7 $\alpha$ Fetus Ultrasound Examination Phantom "SPACE FAN-ST" P.7	US-14a/b Ultrasound Neonatal Head Phantoms P.8	US-8 Pediatric FAST/Acute Abdomen Phantom P.9	US-13 Infant Hip Sonography Training Phantom P.10
US-6 Breast Ultrasound Examination Phantom "BREAST FAN" P.11	US-9 Ultrasound-Guided Breast Biopsy Phantom P.12	M44 Visual-Tactile Breast Examination Simulator P.13	M71 Breast Self Examination Model - body-worn type - P.13	MW48 Full Perinatal Patient Care Simulator "Hana" P.14-
MW34 Obstetric Examination Simulator P.16-	MW40 Obstetric Training Simulator -complete set- P.18-	MW35 Cervical Assessment Simulator P.20	MW36 Vaginal Delivery Assistance Simulator P.21	MW37 Perineorrhaphy Simulator P.22
MW38 Uterine Involution Assessment Simulator P.23	MW32 NCPR Simulator P.24	MW21B NCPR Simulator Plus II P.25	MW33 ELBW Infant Simulator P.25	M59/M63 Newborn Bathing and Nursery Care Model P.26
M58 Newborn Vital Signs Examination Simulator P.26	M56B Pediatric Patient Care Simulator P.27	M95 Simulator Pediatric IV Hand P.28	M43D Pediatric Lumbar Puncture Simulator II P.28	

### Patient Care

MW29 Oral Care Simulator Advanced P.29	MW25 Patient Care Simulator "Yaye" P.30-	MW26 Basic Patient Care Simulator "Keiko" P.32-	MW22 Patient Care Simulator "Cherry" P.34	MW2A/2B Female/ Male Catheterization /Enema Simulator P.35
MW8 Tube Feeding Simulator (NG, OG and PEG) P.36	M85 Airway Suction Trainer P.37	MW1 Pitting Edema Simulator P.38	M66 Medical Foot Care Simulator P.39	M69 Pressure Sores Care Simulator P.39

### Physical Examination

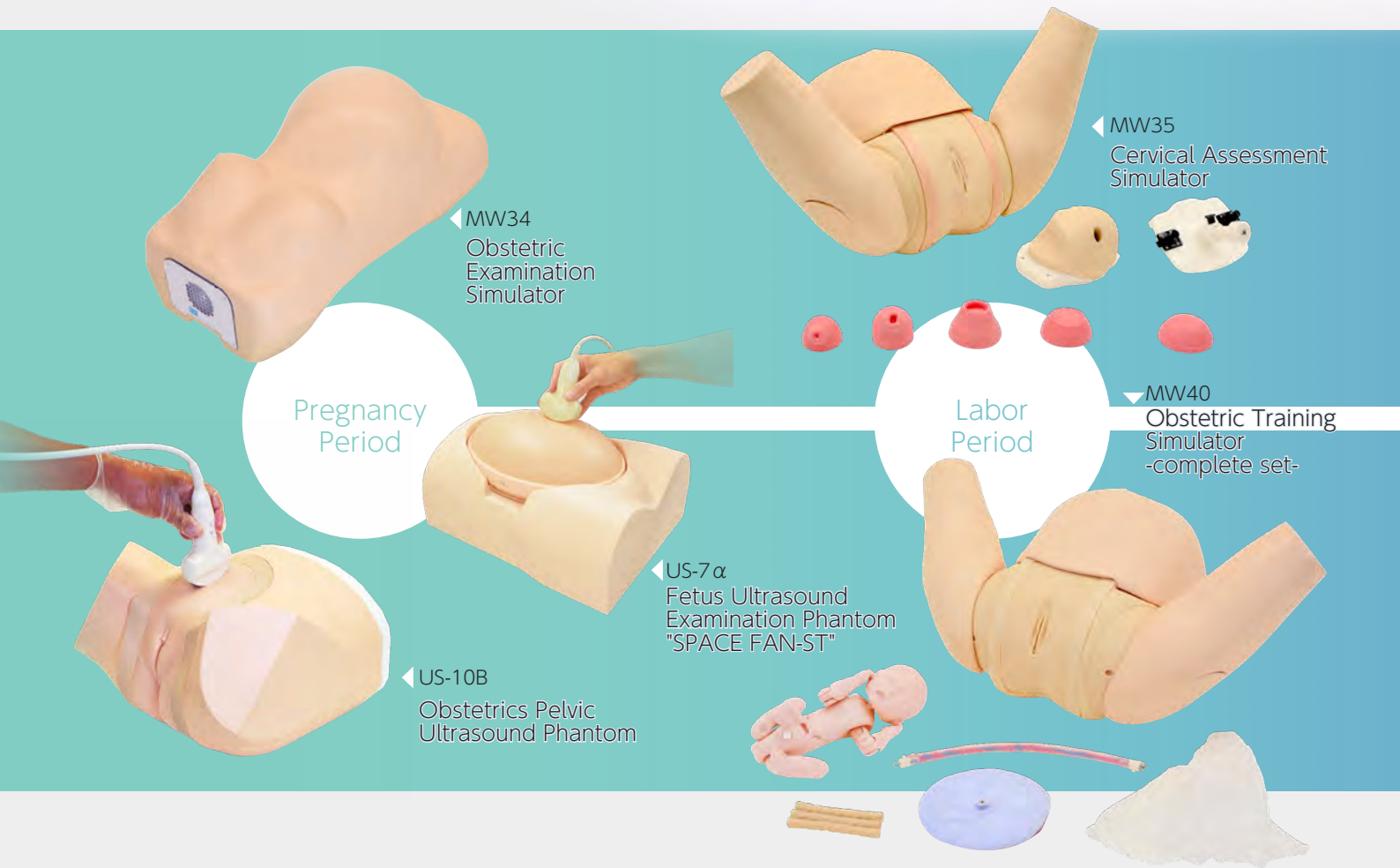
MW43 Abdominal Simulator for Examination P.40	MW7B Blood Pressure Measurement Trainer ver.2 P.41	M55 Physical Assessment Simulator "Physiko" P.42-	MW10 Cardiology Patient Simulator "K" ver.2 P.44-	MW28 Lung Sound Auscultation Trainer "LSAT" ver.2 P.46-
MW12 EAR Examination Simulator II P.48	M82 M82A EYE Examination Simulator P.49	MW20 Prostate and Rectal Simulator P.50		
US-11 Scrotal Ultrasound Phantom P.51	MW24 3D Colonoscope Training Simulator NKS P.52	M40 Colonoscope Training Simulator P.53	US-1B Ultrasound Examination Training Phantom "ABDFAN" P.54	US-1 Ultrasound Examination Training Phantom "ECHOZY" P.55



	<p>MW18 <span>P.56</span></p> <p>Ultrasound-Guided PICC Training Simulator</p> 	<p>M93UB <span>P.57</span></p> <p>CVC Insertion Simulator II</p> 	<p>M93C <span>P.58</span></p> <p>CVC Insertion Simulator III</p> 	<p>M99 <span>P.59</span></p> <p>Arterial Puncture Training Wrist</p> 	Clinical Skills -Injection/Puncture-
<p>MW4/MW4A/MW15/A <span>P.60-</span></p> <p>Ultrasound-Guided Thoracentesis/ Pericardiocentesis Simulators</p> 	<p>M43B <span>P.62</span></p> <p>Lumbar Puncture Simulator II</p> 	<p>M43E <span>P.63</span></p> <p>Ultrasound Compatible Lumbar Puncture/ Epidural Simulator</p> 	<p>MW3 <span>P.64</span></p> <p>Epidural Anesthesia Simulator</p> 	<p>M87 <span>P.65</span></p> <p>Strap-on Venipuncture Simulator</p> 	
<p>M94 <span>P.65</span></p> <p>Intradermal Injection Training Simulator</p> 	<p>MW9 <span>P.66</span></p> <p>Peripheral Venous Catheter Placement Simulator</p> 			<p>MW16 <span>P.68-</span></p> <p>Laparoscopic Suture Simulator -Assessment System-</p> 	Clinical Skills -Suture-
<p>MW56 <span>P.69</span></p> <p>Laparoscopic Suture Simulator LaparoCube</p> 	<p>US-3 <span>P.70</span></p> <p>Abdominal Intraoperative &amp; Laparoscopic Ultrasound Phantom "IOUSFAN"</p> 	<p>M57B <span>P.71</span></p> <p>Suture Evaluation Simulator</p> 	<p>M57C2 <span>P.72</span></p> <p>Laparoscopic Suture Evaluation Simulator</p> 	<p>M83 <span>P.73</span></p> <p>Suture Practice Trainers -Full set-</p> 	
<p>MW11 <span>P.74</span></p> <p>Difficult Airway Management Simulator -Assessment System-</p> 	<p>MW13 <span>P.76</span></p> <p>Difficult Airway Management Simulator -Training Model-</p> 	<p>MW14 <span>P.77</span></p> <p>Difficult Airway Management Simulator -Demonstration Model-</p> 	<p>MW19 <span>P.77</span></p> <p>Difficult Airway Management Simulator for Bronchofiberscopy</p> 	<p>US-5 <span>P.78</span></p> <p>FAST/ Acute Abdomen Phantom "FAST/ER FAN"</p> 	Clinical Skills -ER- Ultrasound
<p>US-18 <span>P.79</span></p> <p>Fundamental Ultrasound Phantom</p> 	<p>US-17 <span>P.79</span></p> <p>Rheumatoid Phantom</p> 	<p>US-16 <span>P.80</span></p> <p>Intradermal Urine Volume Measurement Phantom</p> 	<p>US-2 <span>P.81</span></p> <p>Ultrasound QA Phantom</p> 	<p>US-4 <span>P.81</span></p> <p>Breast Ultrasound Phantom</p> 	



# A Range of Innovative Training Simulators



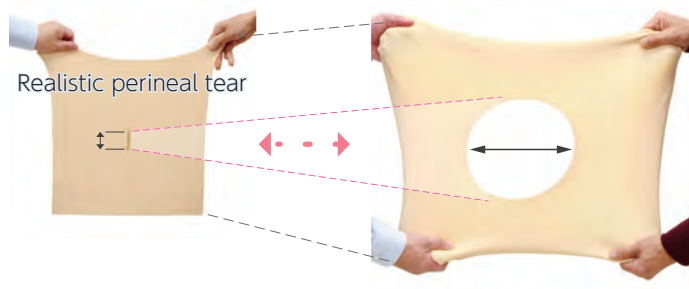
Kyoto  
Maternity  
Series

Innovative  
Features

1

Genital area made of innovative material that excels in elasticity, durability and resilience while offering repeated true-to-life hands-on training in pelvic examination and birthing

\*Resilient perineal area allows for repetitive use, saving cost for training courses.



# from Pregnancy Period to Neonatal Period



◀ MW48  
Full Perinatal Patient  
Care Simulator  
"Hana"

▼ MW37  
Perineorrhaphy  
Simulator



M58 ▶  
Newborn Vital  
Signs Examination  
Simulator



US-7a/b ▶  
Ultrasound Neonatal  
Head Phantoms



M95 ▶  
Simulator Pediatric IV  
Hand



▼ M59/M63  
Newborn Bathing and  
Nursery Care Model



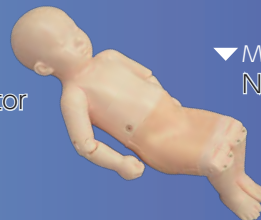
Postpartum  
Period

Neonatal  
Period

MW32 ▶  
NCPR Simulator



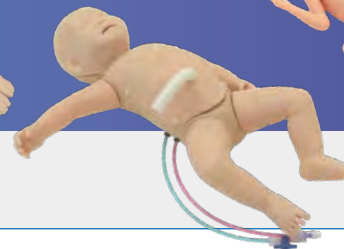
US-13 ▶  
Infant Hip  
Sonography Training  
Phantom



◀ MW38  
Uterine Involution  
Assessment Simulator



▼ MW21  
NCPR Simulator Plus



M43D ▶  
Pediatric Lumbar  
Puncture Simulator II



◀ MW33  
ELBW Infant  
Simulator

2

Smooth delivery of the baby and  
placenta

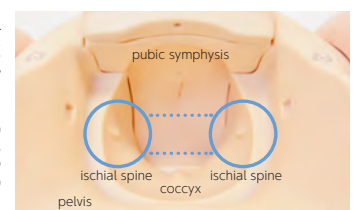
1. Optimal lubricant
2. Genital area that excels in elasticity  
durability and resilience
3. Vaginal canal that matches the  
size of the neonate
4. Holding handle to stabilize the  
maternal body



3

Landmarks on the pelvis that facilitate  
integration of anatomical knowledge and  
procedural skills

Anatomically correct vaginal  
canal, ischial spines, pubic  
symphysis and coccyx allow  
for observation and palpation  
of the landmarks related to  
fetal positions, promoting  
anatomical understanding to  
acquire midwifery skills.



Accurate anatomy

US-10 US-10a US-10b



# Female Pelvic Ultrasound Phantom

## Practice both transvaginal and transabdominal ultrasound procedures in one

New unit released includes normal, pathological and ectopic pregnancies.

### Product Supervision

Charlotte Henningsen, MS, RT(R), RDMS, RVT, FSDMS, FAIUM  
Chair & Professor - Sonography Department  
Adventist University of Health Sciences



coming soon

IUD Unit



### FEATURES

- 1 | Compatible with actual ultrasound probe
- 2 | Three types of interchangeable phantom inserts with different pathologies
- 3 | Realistic view of female external genital
- 4 | Excellent ultrasound image quality

### SKILLS

- | Handling and manipulation of transvaginal and transabdominal transducers
- | Interpretation of sonogram
- | Visualization and localization of anatomies and pathologies

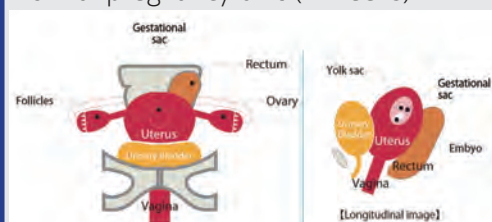
**ANATOMY** Three variations of training sets. Select the one which best meet your requirements.

#### US-10A: Full set

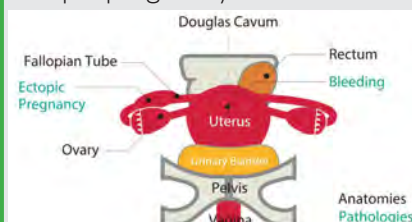
#### US-10: for Gynecology

#### US-10B: for Obstetrics

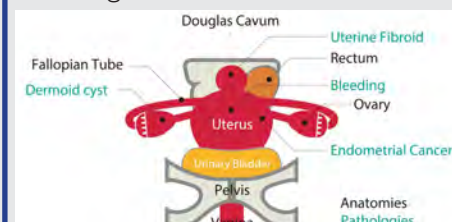
#### Normal pregnancy unit (7 weeks)



#### Ectopic pregnancy unit



#### Pathological unit



### DESCRIPTIONS

#### SPECIFICATIONS

Torso size: W34 x D33 x H24cm  
W13.5 x D13 x H9.5 inch

weight: 7.2kg / 15.9 lbs

#### SET INCLUDES

US-10  
Female Pelvic Ultrasound Phantom

- 1 lower torso manikin
- 1 ultrasound pathology unit
- 1 ultrasound ectopic pregnancy unit
- 1 talcum powder
- 1 Syringe
- 1 storage case
- 1 instruction manual

#### US-10A

Female Pelvic Ultrasound Phantom

- 1 lower torso manikin
- 1 ultrasound pathology unit
- 1 ultrasound first trimester pregnancy unit
- 1 ultrasound ectopic pregnancy unit
- 1 talcum powder
- 1 syringe
- 2 storage cases
- 1 instruction manual

#### MATERIALS

Soft resin, Polyurethane elastomer  
Latex free

#### US-10B

Obstetrics Pelvic Ultrasound Phantom

- 1 lower torso manikin
- 1 ultrasound first trimester pregnancy unit
- 1 ultrasound ectopic pregnancy unit
- 1 talcum powder
- 1 syringe
- 1 storage case
- 1 instruction manual

#### REPLACEMENT PARTS

- 41909-030 ultrasound pathology unit
- 41909-040 ultrasound ectopic pregnancy unit
- 41909-050 ultrasound first trimester pregnancy unit
- 41909-060 skin for US-10 / 10A / 10B

\* Ultrasound scanner is not included.

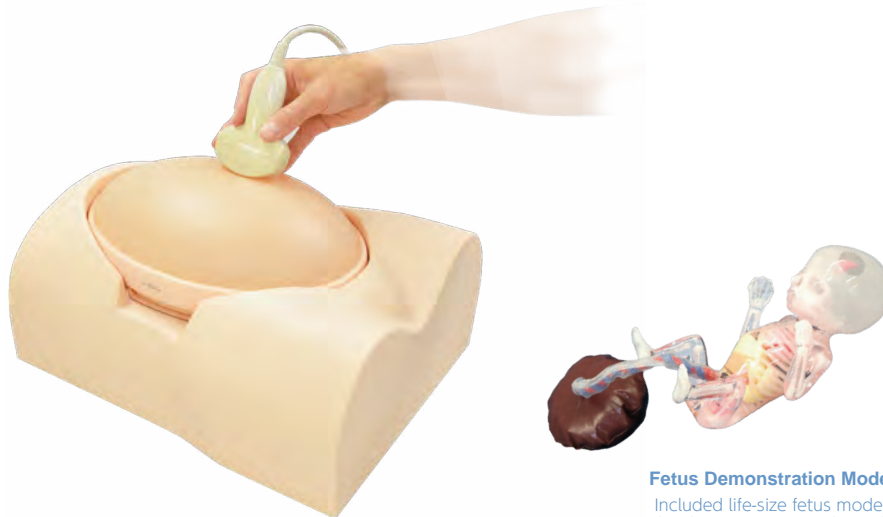


US-7 $\alpha$ 

# Fetus Ultrasound Examination Phantom "SPACE FAN-ST"

## Staple phantom for hands-on practice in second trimester screening

Includes a 23-week fetus with detailed anatomy associated with assessment of gestational age in second trimester



### Fetus Demonstration Model

Included life-size fetus model for demonstration and visual understanding.

### Product Supervision

Kiyoko Kabeyama RN, RM, PhD  
Professor Midwifery & Women's Health, School of Human Health Science, Graduate School of Medicine, Kyoto University

Haruto Egawa, PhD

National Hospital Organization Kyoto Medical Center  
Department of Obstetrics, Head Physician or Medical Director



Photos courtesy of Adventist University of Health Sciences

### Heart with four chambers



### UV



## FEATURES

- 1 | The oval shape phantom abdomen can be set into four different positions.
- 2 | The fetus includes full skeletal structures and key organs.
- 3 | Includes an educational DVD and a fetus demonstration model for comprehensive learning.
- 4 | Includes a 23-week fetus.

## SKILLS

- | Fetal size assessment: BPD, AD, AC and FL
- | Measurement of amniotic fluid volume
- | Determination of fetus presentation (cephalic or breech)
- | Assessment of each body part
  - Head: skull and brain
  - Spine and limbs
  - Cardiac chambers, blood vessels and lungs
- | Assessment of umbilical cord and placenta position
- | Determination of sex (This phantom represents a male fetus.)

## ANATOMY

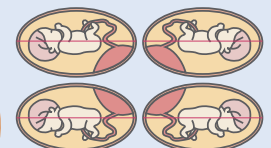
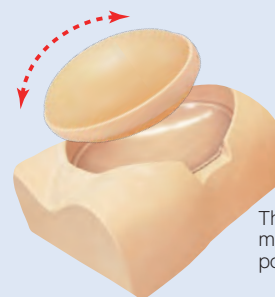
### Uterus

- | amniotic fluid
- | placenta
- | umbilical cord

### Fetus

- | skeletal structure
- | brain with septum lucidum
- | lateral ventricles and cerebellum
- | heart with four chambers
- | lungs
- | spleen
- | bladder

- | stomach
- | liver
- | kidneys
- | aorta
- | umbilical vein
- | umbilical artery
- | external genitalia



The oval shape phantom abdomen can be set in four different positions.

## DESCRIPTIONS

### SPECIFICATIONS

Size: W40 x D31 x H22 cm  
W15.7 x D12.2 x H8.7 inch

Weight: 7.3kg / 13 lbs

### MATERIALS

Soft resin, Polyurethane elastomer  
Latex free

### SET INCLUDES

- 1 mother body torso
- 1 ultrasound pregnant uterus phantom
- 1 fetus demonstration model
- 1 storage case
- 1 tutorial manual (DVD)
- 1 talcum powder

\* Ultrasound scanner is not included.



US-14a



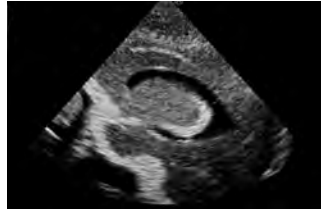
# Ultrasound Neonatal Head Phantom (Normal Type)



**World's first ultrasound neonatal head phantom with key anatomies**

## Product Supervision

Charlotte Henningsen,  
MS, RT(R), RDMS, RVT, FSDMS, FAIUM  
Chair & Professor - Sonography Department  
Adventist University of Health Sciences



## FEATURES

Cranial or head ultrasound is one of the most difficult scanning skills, and trainees have few opportunities for training. This head model features an accurate depiction of a newborn's cerebral anatomy, and facilitates a realistic user experience with its life-like soft touch.

## SKILLS

- Scanning of brain anatomy in sagittal (angled parasagittal), coronal and transverse planes via any fontanel
- Palpation of anterior, posterior and mastoid fontanels

## ANATOMY

- |                    |                   |                  |
|--------------------|-------------------|------------------|
| skull              | cerebrum          | third ventricle  |
| anterior fontanel  | cerebellum        | fourth ventricle |
| posterior fontanel | brain-stem        | septum lucidum   |
| mastoid fontanels  | lateral ventricle |                  |

## DESCRIPTIONS

### SPECIFICATIONS

Size: W13 x D13 x H17 cm  
W5.1 x D5.1 x H6.7 inch

Weight: 1.5kg / 3.3lbs

### SET INCLUDES

- 1 ultrasound phantom
- 1 pillow
- 1 storage case
- 1 instruction manual

### MATERIALS

Polyurethane elastomer  
Latex free

\* Ultrasound scanner is not included.

US-14b



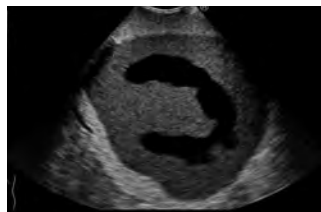
# Ultrasound Neonatal Head Phantom (Abnormal Type)



**World's first ultrasound neonatal head phantom with hydrocephalus**

## Product Supervision

Charlotte Henningsen,  
MS, RT(R), RDMS, RVT, FSDMS, FAIUM  
Chair & Professor - Sonography Department  
Adventist University of Health Sciences



## FEATURES

This head phantom is designed to demonstrate Hydrocephalus. The shape of the skull is altered due to intracranial pressure.

## SKILLS

- Scanning of brain anatomy in sagittal (angled parasagittal), coronal and transverse planes via any fontanel
- Palpation of fontanels

## ANATOMY

- | skull
- | anterior fontanel
- | posterior fontanel
- | hypertrophied lateral ventricle

## DESCRIPTIONS

### SPECIFICATIONS

Size: W13 x D14 x H20 cm  
W5.1 x D5.5 x H7.9 inch

Weight: 1.5kg / 3.3lbs

### SET INCLUDES

- 1 ultrasound phantom
- 1 pillow
- 1 storage case
- 1 instruction manual

### MATERIALS

Polyurethane elastomer  
Latex free

\* Ultrasound scanner is not included.



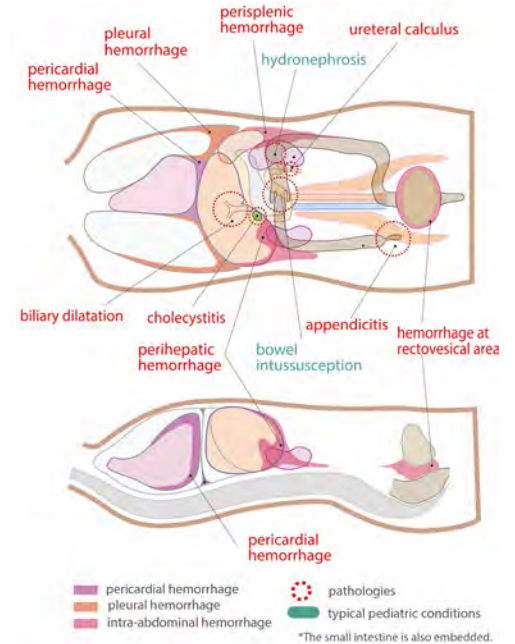
# Pediatric FAST/Acute Abdomen Phantom

## Ultrasound training for pediatric FAST procedures

This world's first pediatric ultrasound torso phantom provides opportunities of hands-on training in ultrasound examination of two-year-old patient

### Product Supervision

Shunsuke Nosaka, MD, PhD  
Director of Radiology  
National Medical Center for Children and Mothers



### FEATURES

- 1 | Thoracoabdominal organs, bone structure and free-fluid for practicing FAST examination procedures
- 2 | Commonly seen pathologies in pediatrics
- 3 | Acquire fundamental pediatric abdominal ultrasound skills, as well as FAST/Acute sonography skills

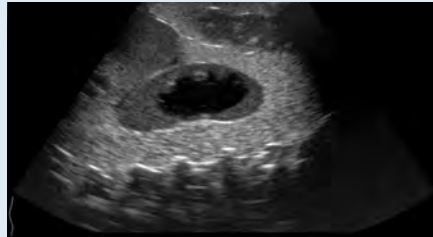
### SKILLS

- FAST procedures:  
Internal hemorrhage at perihepatic, perisplenic, pelvis, and pericardium area
- Sonography for acute pediatric patient:  
Bowel intussusception, appendicitis and biliary dilatation

### KEY FEATURES



Pleural hemorrhage



Hydronephrosis



Appendicitis

### DESCRIPTIONS

#### SPECIFICATIONS

Size: W41 x D17 x H15 cm  
W16.1 x D6.7 x H5.9 inch

Weight: 7kg / 15.4lbs

#### SET INCLUDES

- 1 | ultrasound phantom
- 1 | talcum powder
- 1 | storage case
- 1 | tutorial manual (DVD)

#### MATERIALS

Polyurethane elastomer  
Latex free

#### REPLACEMENT PARTS

#### RECOMMENDED DEVICES

\* Ultrasound scanner is not included.







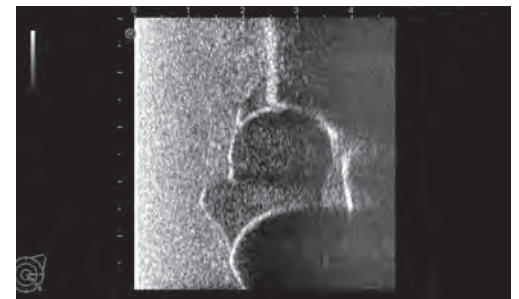
# Infant Hip Sonography Training Phantom

## World's first infant hip sonography phantom Best tool to teach Graf's method

Product Supervision

Univ. Prof., h.c., Reinhard Graf, M.D.

This phantom expands training opportunities for pediatricians, radiologists and orthopedists. Before working on real infants, trainees can repetitively practice on this phantom to become familiar with the examination procedures and key points. Using real ultrasound devices, trainees can learn key ultrasound landmarks to identify standard plane for Graf's classification. This is a foundation to acquire skills in handling and positioning of the baby as well as correct positioning of the transducer.



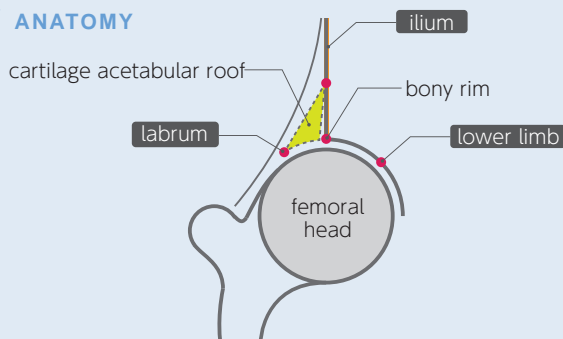
### FEATURES

- 1 | The market's only training phantom for hip sonography on a full body manikin of 6-week-old infant.
- 2 | Bilateral hips for examination.
- 3 | Facilitate anatomical understanding.
- 4 | Movable arms to practice supporting and repositioning of the infant.

### SKILLS

- | Setting and preparation for hip sonography
- | Changing the position of the infant
- | Communication and interaction with infant's guardian
- | Correct use and positioning of the transducer
- | Recognition of landmarks for hip sonography
- | Visualization of standard, anterior and posterior planes
- | Interpretation and morphological classification of the sonogram

### ANATOMY



### KEY LANDMARKS

- | chondro-osseous junction
- | femoral head
- | synovial membrane
- | joint capsule
- | acetabular labrum
- | cartilaginous portion of the acetabular roof
- | bony promontory of the superior bony acetabular rim
- | lower margin of the ilium
- | standard plane

### DESCRIPTIONS

#### SPECIFICATIONS

Size: W55 x D25 x H13 cm  
W21.6 x D9.8 x H5.1 inch

Weight: 3kg / 6.6lbs

#### MATERIALS

Polyurethane elastomer  
Latex free

#### RECOMMENDED DEVICES

-

#### SET INCLUDES

- 1 ultrasound infant phantom
- 1 talcum powder
- 1 storage case
- 1 instruction manual

#### REPLACEMENT PARTS

-

\*Supporting cushion is not included.  
\* Ultrasound scanner is not included.





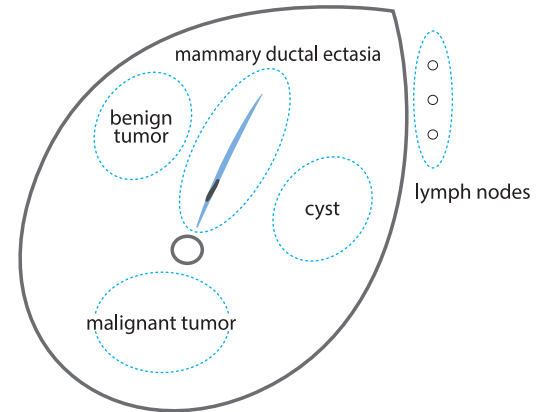
# Breast Ultrasound Examination Phantom "BREAST FAN"

## Unique phantom for basic breast ultrasound examination

Simulated targets with different echogenicities are embedded in the phantom's mammary gland

### Product Supervision

Tokiko Endo, MD, PhD  
Director of Department of Advanced Diagnosis,  
Clinical Research Center,  
National Hospital Organization Nagoya Medical Center  
Director of Department of Radiology,  
National Hospital Organization Nagoya Medical Center



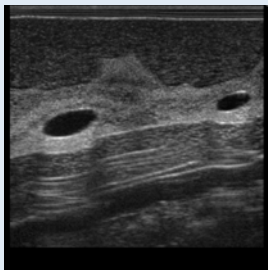
### FEATURES

- 1 | State-of-the-art breast ultrasound phantom with anatomy
- 2 | Skills required for ultrasound breast screening can be greatly advanced with practice
- 3 | Excellent ultrasound image quality

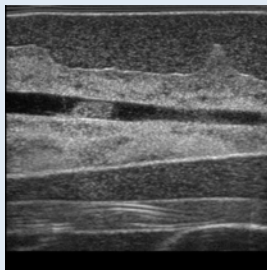
### SKILLS

- | Systematic full breast scanning
- | Visualization of key anatomical landmarks
- | Tracking of galactophore
- | Visualization and differentiation of typical pathologies
- | Localization and measurement of cysts and tumor

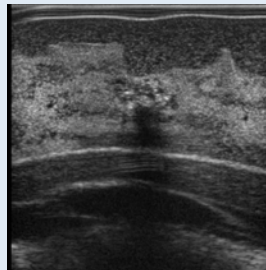
### IMAGES



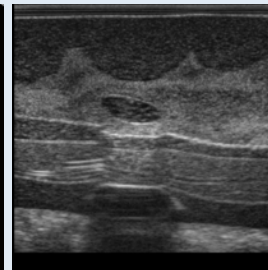
Cyst



Mammary ductal ectasia



Malignant tumor



Benign tumor

### ANATOMY

- | subcutaneous adipose
- | mammary gland
- | galactophore
- | cooper's ligament
- | retromammary adipose
- | costae
- | clavicle
- | pectoralis major
- | lung
- | lymph nodes at axilla

### DESCRIPTIONS

#### SPECIFICATIONS

Size: W33 x D45 x H11 cm  
W13.0 x D17.7 x H4.3 inch

Weight: 7kg / 15.4lbs

#### MATERIALS

Polyurethane elastomer  
Latex free

#### RECOMMENDED DEVICES

-

#### SET INCLUDES

- 1 | breast phantom
- 1 | talcum powder
- 1 | storage case
- 1 | tutorial manual (DVD)
- 1 | instruction manual

#### REPLACEMENT PARTS

-

\* Ultrasound scanner is not included.

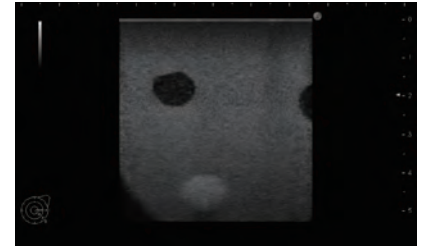




# Ultrasound-Guided Breast Biopsy Phantom

## Enhance confidence in performing safe and accurate breast biopsies

Combine two types of breast phantoms for step-by-step development of skills in needle biopsy



### FEATURES

- 1 | Fine Needle Aspiration Biopsy (FNAB), Core Needle Biopsy (CNB) and Mammotome biopsy can be performed under ultrasound guidance.
- 2 | Realistic breast tissues that simulate the softness and resistance of the mammary gland.
- 3 | Targets are colored to confirm successful sampling.
- 4 | Targets are embedded in three levels for training in needle access in different angles and depth.
- 5 | Transparent and opaque phantoms provide level variations.
- 6 | Inexpensive and disposable for multiple attempts.

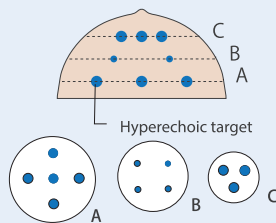
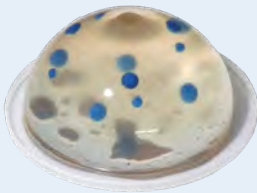
### SKILLS

- | Hand-eye coordination in ultrasound biopsy
- | Localization of targets under ultrasound guidance
- | Sampling of target

### KEY FEATURES

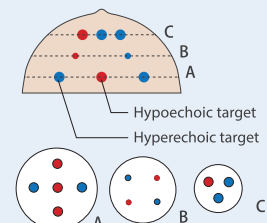
#### Basic (Transparent)

Hand-eye coordination



#### Advanced (Opaque)

Acquisition of skills in safe and reliable needle biopsy



### DESCRIPTIONS

#### SPECIFICATIONS

Size: 16 dia. x H8 cm / 6.3 dia. x H3.2 inch      Weight: 700g / 1.5 lbs

#### SET VARIATIONS

Duo set : 11387-000	transparent + opaque type
Transparent set : 11387-100	1 pair of transparent type
Opaque set : 11387-200	1 pair of opaque type

#### MATERIALS

Hydrogel  
Latex free

#### REPLACEMENT PARTS

-

#### RECOMMENDED DEVICES

-

\* Ultrasound scanner is not included.

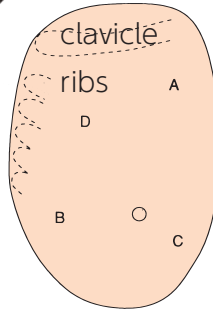




M44



# Visual-Tactile Breast Examination Simulator



## A compact and realistic breast examination trainer

An excellent training and demonstration tool in breast lumps palpation both in educational and clinical setting

Utility model (Japan): No.1790498

Product Supervision

Tsuneaki Senoh, Prof.,  
Kurashiki Medical Center

### FEATURES

- 1 | Four breast lumps (tumor with dimple, tumor with skin depression, fibroadenoma and mastopathy)
- 2 | Bony landmarks for palpation: clavicle and ribs
- 3 | Soft and life-like texture

### SKILLS

- | Tactile breast examination
- | Breast self-examination

### PATHOLOGIES

#### (A) Skin Dimpling (Tumor):

Hard. Uneven surface. Partially unclear boundary

#### (B) Pitting (Tumor):

Hard. Uneven surface. Partially unclear boundary.

#### (C) Fibroadenoma:

Spherical. Smooth surface. Movable. Clear boundary.

#### (D) Mastopathy:

Elastic. Smooth surface. Unclear boundary.

### DESCRIPTIONS

#### MATERIALS

Latex free  
Soft resin

#### REPLACEMENT PARTS

-

### SPECIFICATIONS

Size: W20 x D28 x H13 cm / W7.9 x D11 x H5.1 inch

### SET INCLUDES

- 1 | breast model (attached to the case)
- 1 | talcum powder
- 1 | storage case
- 1 | instruction manual

M71



# Breast Self Examination Model - body-worn type -



Wearable

## Breast examination trainer for self examination

Practice to detect and differentiate 6 different lumps through visual-tactile examination.

Utility model (Japan): No.1790498

Product Supervision

Tsuneaki Senoh, Prof.,  
Kurashiki Medical Center

### FEATURES

- 1 | Six signs of breast tumors
- 2 | An ideal tool for breast self-examination education.
- 3 | Realistic size, appearance and texture.

### SKILLS

- | Tactile breast examination
- | Breast self-examination

### DESCRIPTIONS

#### MATERIALS

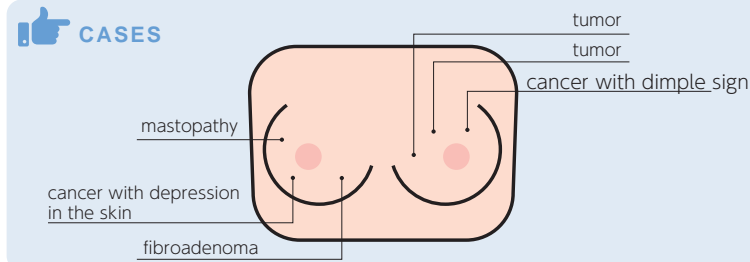
Soft resin  
Latex free

#### REPLACEMENT PARTS

-

#### RECOMMENDED DEVICES

-



### SPECIFICATIONS

Size: W28 x D21 x H8 cm / W11 x D8.2 x H3.1 inch

### SET INCLUDES

- 1 | breast model with the strap belts
- 1 | storage case

MW48

NEW

# Full Perinatal Patient Care Simulator "Hana"

## Be a part of Hana's journey as a new mother

Training manikin which covers from gestational to post-natal periods  
Let us help you take your first step in perinatal care!



### FEATURES

- 1 | Interchangeable abdomen to simulate perinatal examination, ultrasound examination at 23-weeks-fetus, cervical examination, labor, perineal tear and puerperal.

### POINTS



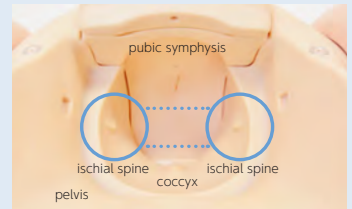
One-touch interchangeable parts



Compatible with birthing chairs

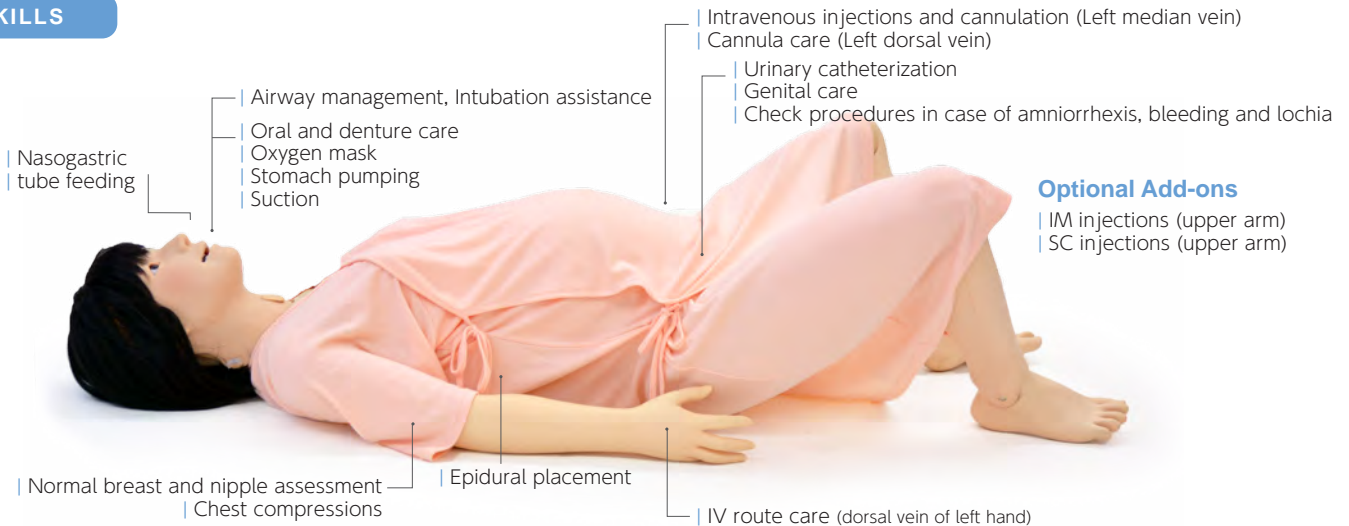


Durable yet realistically elastic



Accurate anatomy

### SKILLS



## Perinatal examination

### During pregnancy

#### Perinatal examination

- | Palpation  
(e.g. using Leopold's maneuvers, cephalopelvic disproportion assessment)
- | Repositionable fetus
- | Auscultation of fetal sounds, with adjustable heart rates from 60 to 180
- | Measurable abdomen girth, fundal height and external pelvimetry



#### Ultrasound examination

- | Screening of 23 weeks fetus
- | Fetal size assessment using BPD, AC, FL, and so on
- | Measurement of amniotic fluid volume
- | Determination of fetus presentation



### Childbirth

#### Cervical examination

- | 5 types of cervical dilation models
- | Determination of bishop score (cervix score)
- | Check fetal head position



#### During labor

- | Various positions: Supine, lateral, all-fours
- | Perineal protection
- | Cephalic and breech presentations
- | Obstetric forceps delivery and vacuum extraction delivery
- | Tying and cutting of the umbilical cord
- | Delivery of the placenta
- | Inspection of the amniotic sac
- | Insertion of urinary catheter



#### Perineal tear

- | Perineorrhaphy:
  - single interrupted suture
  - vertical mattress suture
- | Repetitive suture practice for first degree perineal tear



### Puerperal

#### Puerperal assessment

- | Assessment uterine involution in early puerperium: 4 types of variations
- | Measurement and palpation of uterine fundus
- | Perineal cleaning and assessment
- | Postpartum massage
- | Assessment of anal prolapse



## DESCRIPTIONS

#### SPECIFICATIONS

Size: 164 cm/ 63 inch Weight: 20 kg / 2.2 lbs

#### SET INCLUDES

\*components for basic manikin. Training modules are to be added according to requirements

1 manikin	1 injection pad (median vein)
1 wig	1 irrigation bag
1 face mask for Hana	1 drainage pump /drainage hose
1 denture	1 lubricant for training models
1 female genitalia	1 talcum powder
1 maternity clothes	instruction manual
1 towel	

#### MATERIALS

Soft resin  
Latex free

#### REPLACEMENT PARTS

11229-050	lubricant for training models
11251-030	replacement shoulder IM pads
11416-040	velamen sheets
11416-030	10 umbilical codes for omphalotomy
11417-010	genitalia insert
11415-020	3 lubricant (150ml)

#### RECOMMENDED DEVICES

-	
11406-040	wig
11415-030	genitalia unit
11415-010	cervical dilation inserts
11416-020	placenta

MW34



NEW

# Obstetric Examination Simulator

**Simulate prenatal checkups using our 39 to 40 week pregnancy simulator**  
**Palpation, auscultation, and measurement all in one simulator**



## FEATURES

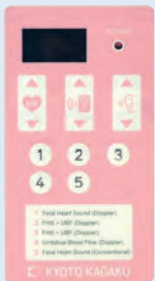
- 1 | Soft, durable and realistic senses of touch
- 2 | Various fetal positions and orientations by rotating the fetal unit
- 3 | Recorded and edited actual fetal heart sounds

## LANDMARKS

- | pubic symphysis
- | navel
- | xiphoid process
- | iliac crest
- | great trochanters

## KEY FEATURES

### Auscultation



**Selection of sounds can be controlled using a remote control for convenient and fast-paced trainings.**  
**Actual fetal heart sound recordings can be heard with a stethoscope or projected for group-based sessions.**

#### Five sound variations:

- Stethoscope sounds
  - Fetal heart sounds
- Doppler sounds
  - Fetal heart sounds
  - Umbilical blood flow
  - Umbilical blood flow with fetal heart sounds combined (posterior and anterior)

\*Doppler sounds are to be heard through the external speaker.

#### Controllable parameters

- Control of fetal heart rate (60-180)
- Switch between internal and external speakers

## DESCRIPTIONS

### SPECIFICATIONS

Size: W30 x D 60 x H30 cm/ W11.8 x D23.6 x H11.8 inch Weight: 11.2 kg / 24.7 lbs

### SET INCLUDES

- 1 pregnancy torso
- 1 AC adaptor
- 1 remote control
- 1 talcum powder
- 1 instruction manual

### MATERIALS

Soft resin  
 Latex free

### REPLACEMENT PARTS

11414-010 skin cover for MW34

### RECOMMENDED DEVICES

-



## KEY FEATURES

### Palpation

#### Palpation an anatomically correct pelvic and fetal landmarks

Innovative tissue-like material!

#### ■ Leopold's maneuvers

Palpate parts of the fetus, such as the head, buttocks and trunk using the first to fourth maneuvers.

Determine fetal position and orientation, as well as degrees of fetal descent.

First maneuver

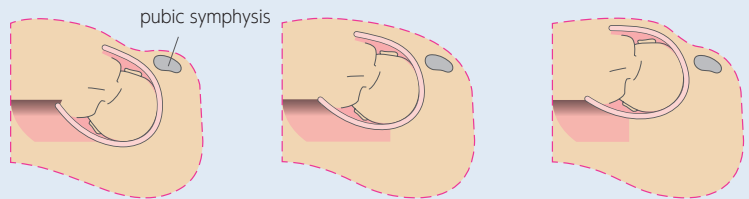


Fourth maneuver



#### ■ Cephalopelvic disproportion assessment

Practice multiple CPD assessment scenarios. Height of the fetal head against the pubic symphysis can be changed by rotating the fetal unit.



### Measurements

Measure and estimate fetal weight, development and amniotic fluid volume.

Maternal abdominal girth



Fundal height



A variety of external pelvimetries



Distania spinarum



Distania cristarum



Distania trochanterica



External oblique diameter

A83A

### Pregnant Uterus Model

This model replicates the anatomy of a maternal body at the final stage of pregnancy. The fetus can be removed out of the body.



A89

### Fetal Development Model Set

This set of embryo models demonstrates regular fetal development in sequence from the 9th to 40th weeks of pregnancy.



MW40



NEW

# Obstetric Training Simulator -complete set-

**Comprehensive maternal body set for skills training  
in vaginal examinations during labor and delivery**



## FEATURES

- 1 | The external genitalia is made of innovative material that excels in elasticity durability resilience for effective and repetitive training.

## SKILLS

- | Cervical examination
- | Delivery assistance
- | Perineorrhaphy (perineal repair)

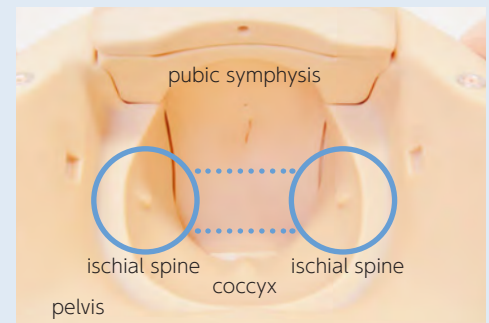
## KEY FEATURES

The external genitalia is made of innovative material that excels in elasticity durability resilience for effective and repetitive training.



## LANDMARKS

- | velamen (amniotic sac)
- | vaginal canal
- | ischial spine
- | pubic symphysis
- | coccyx
- | anterior fontanelle



## KEY FEATURES

### Cervical examination

5 types of cervical dilation models and fetal descent positions can be interchanged with a single action.

- | Cervical scoring in the first stage of labor
  - Determination of station using landmarks of the ischial spine and the pubic joint to assess the descent of the body
  - Assessment of cervical dilation
- | Speculum examination
- | Observation and cervical cytology
- | Urinary catheterization



### Delivery assistance

#### Smooth and realistic delivery



- | Delivery assistance for different delivery positions (dorsal, all-fours)
- | Perineal protection
- | Delivery of fetus (forceps delivery, vacuum extraction)
- | Clamping, tying and cutting of the umbilical cord
- | Delivery of the placenta
- | Insertion of urinary catheter



### Perineorrhaphy (perineal repair)

Repetitive suture training for the first-degree perineal tears.

#### First-degree perineal tear repair

- | Single interrupted suture
- | Vertical mattress suture



## DESCRIPTIONS

### SPECIFICATIONS

Size: W74 x D44 x H33.5cm / W29.1 x D17.3 x H13.2 inch Weight: 11.2kg / 24.7lbs

### SET INCLUDES

1 maternal body	1 vaginal unit
1 genitalia unit (for pelvic examination and delivery assistance)	1 set of cervical dilation inserts (5 variations)
1 talcum powder	1 holder for the cervical dilation inserts
3 lubricant (150ml)	
1 instruction manual	

### Parts for pelvic examination:

### MATERIALS

Soft resin  
Latex free  
Parts for Delivery Assistance:

1 fetus
1 placenta
3 umbilical cords for omphalotomy
1 tray
5 velamen sheets

### Parts for Perineorrhaphy:

1 genitalia unit (for perineorrhaphy)
---------------------------------------

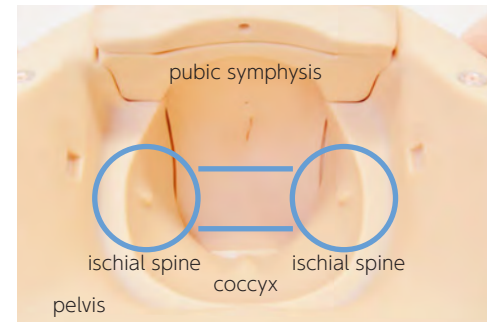
MW35



NEW

# Cervical Assessment Simulator

**Realistic yet durable material  
for repetitive practice of cervix scoring**



Station zero, the line that connects ischial spines can be recognized.

## FEATURES

- 1 | Genital area made of innovative material that excels in elasticity, durability, and resilience, offers repetitive training.
- 2 | 5 types of cervical dilation models and fetal descent positions can be interchanged with a single action.
- 3 | Anterior/posterior fontanelles to determine the fetal position

## SKILLS

- | Cervix scoring in the first stages of labor
- | Check fetal head position
- | Determination of bishop score (cervix score)
- | Speculum examination (i.e. Pap smear testing)
- | Urinary catheterization
- | Cervical cytology

## KEY FEATURES



Cervical dilation insert can be attached by a single action.



Descent of the fetus can be set by the lever on the holder. (from -3 to +3)



External genitalia that excels in elasticity, durability and resilience

## DESCRIPTIONS

### SPECIFICATIONS

Size: W74xD44 x H33.5 cm  
W29xD17xH13 inch

Weight: 10.3 kg / 22.7 lbs

### SET INCLUDES

- |   |                      |
|---|----------------------|
| 1 maternal body                                   | 3 lubricant (150 ml) |
| 1 genitalia unit                                  | 1 talcum powder      |
| 1 vagina unit                                     | 1 instruction manual |
| 1 set of cervical dilation inserts (5 variations) |                      |
| 1 holder for the cervical dilation inserts        |                      |

### MATERIALS

Soft resin, hard plastic  
Latex free

### RECOMMENDED DEVICES

-

### REPLACEMENT PARTS

- |           |  |
|-----------|--|
| 11415-010 | 1 set of cervical dilation inserts (5 variations)                    |
| 11415-020 | 3 lubricant (150 ml)   |
| 11415-030 | 1 genitalia unit<br>(for pelvic examination and delivery assistance) |







# Vaginal Delivery Assistance Simulator

**Simulates the delivery of a newborn,  
from perineal protection to delivery of the placenta**



## FEATURES

- 1 | Genital area made of innovative material that excels in elasticity, durability and resilience offers repetitive training opportunity.
- 2 | Anatomically correct vaginal canal, ischial spine and pubic joint that facilitate training with anatomical understanding.
- 3 | Elastic eternal genitalia, realistic shape of vaginal canal and the holding handle for the maternal body facilitate simulating a smooth delivery

## SKILLS

- Delivery assistance for different delivery positions (dorsal, all-fours)
- Perineal protection
- Delivery of fetus (forceps delivery, vacuum extraction)
- Clamping, tying and cutting of the umbilical cord
- Delivery of the placenta
- Insertion of urinary catheter
- Inspection of the velamen



Perineal protection, anal sphincter protection



Delivery assistance



Smooth delivery of the baby



Clamping, tying and cutting of the umbilical cord



Delivery of the placenta



Inspection of placenta and velamen

## KEY FEATURES



### Skills training associated with anatomical understanding

Position of the fetus against the pelvis can be observed under direct vision during the delivery.

### Two possible birth positions

Dorsal position  
All-fours position

## DESCRIPTIONS

### SPECIFICATIONS

Size: W74 x D44 x H33.5 cm  
W29xD17xH13 inch

Weight: 11.2kg / 24.7 lbs

### SET INCLUDES

1 maternal body	3 umbilical cords for omphalotomy
1 genitalia unit (for pelvic examination and delivery assistance)	1 talcum powder
1 fetus	5 velamen sheets
1 placenta	3 lubricants (150 ml)
	1 tray
	1 instruction manual

### MATERIALS

Soft resin, hard plastic  
Latex free

### REPLACEMENT PARTS

11415-030	1 genitalia unit
11416-020	1 placenta
11416-040	5 velamen sheets
11416-030	10 umbilical cords for omphalotomy
11415-020	3 lubricants (150 ml)

### OPTIONAL PARTS

11417-020 genitalia unit (frame, skin)

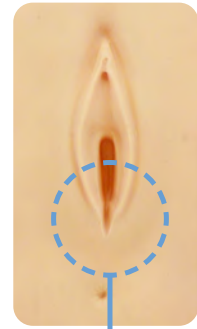
MW37



NEW

# Perineorrhaphy Simulator

Practice first-degree perineal tear repairs repetitively



First-degree perineal tear



## FEATURES

- 1 | Suture training for first-degree perineal tears
- 2 | Genital area that excels in elasticity, durability and resilience for multiple training opportunities.
- 3 | Optional genitalia unit for training with the maternal body.

## SKILLS

- | Perineorrhaphy (perineal repair)
  - Single interrupted suture
  - Vertical mattress suture

## KEY FEATURES



Genitalia skin can be mounted on the genitalia unit (optional part) for realistic training with the maternal body.

## DESCRIPTIONS

### SPECIFICATIONS

Size: W16 x D23 x H20.5 cm  
W6.3 x D9 x H8 inch

Weight: 1.5 kg / 3.3 lbs

### MATERIALS

Soft resin  
Latex free

### SET INCLUDES

- 1 | genitalia insert
- 1 | supporting holder
- 1 | talcum powder
- 1 | instruction manual

### REPLACEMENT PARTS

11417-010 2 genitalia inserts (perineorrhaphy)

\* Suturing instruments are not included.



MW38



NEW

# Uterine Involution Assessment Simulator

Practice highly realistic uterine involution assessments  
via a soft, durable and elastic postpartum torso



Palpation of uterine fundus



Measurement of fundal height

## FEATURES

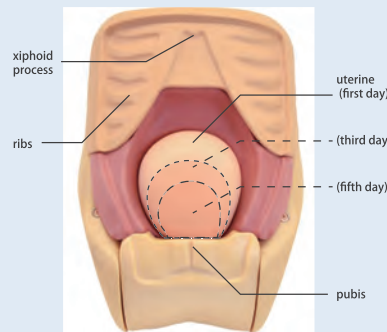
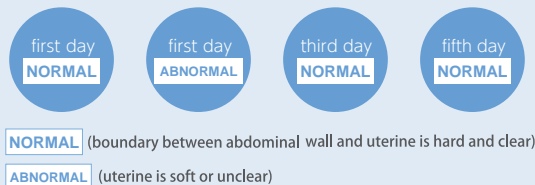
- 1 | Soft and elastic abdominal wall that permits highly realistic palpation to assess the degree of uterine involution and to measure fundal height.
- 2 | Four interchangeable uterine inserts

## SKILLS

- | Assessment of uterus in early puerperium
- | Fundal height measurement
- | Palpation of uterine fundus
- | Perineal cleansing and assessment
- | Postpartum massage
- | Assessment of anal prolapse

## KEY FEATURES

### 4 variations of uterine inserts



## LANDMARKS

- | pubic symphysis
- | umbilicus
- | uterus

## DESCRIPTIONS

### SPECIFICATIONS

Size: W28 x D42 x H26 cm      Weight: 7.4kg / 16.3 lbs  
W11 x D16.5 x 10.2 inch

### SET INCLUDES

- 1 | puerperal lower torso
- 1 | set of uterine inserts (4 variations)
- 1 | talcum powder
- 1 | instruction manual

### MATERIALS

Soft resin  
Latex free

### RECOMMENDED DEVICES

-

### REPLACEMENT PARTS

- 11418-010 1 skin cover (for uterine involution assessment)
- 11418-020 1 set of uterine inserts (4 variations)



MW32



NEW

# NCPR Simulator

**Manikin that facilitates Cardio-Pulmonary Resuscitation training of newborn baby**



## FEATURES

- 1 | Airway management training with observable bilateral/unilateral ventilation
- 2 | Soft and realistic umbilical cord capable of venous and arterial line placement, and blood sample collection
- 3 | Feeding tube placement confirmable through gastric fluid aspiration and
- 4 | Chest compression

## SKILLS

### Basic neonatal care

- | Changing body position
- | Hygiene
- | Palpation of the anterior fontanelle
- | Umbilical catheterization
- | Umbilical cord care
- | Tube feeding (nasal and oral) and gastric fluid aspiration
- | Clamping, tying and cutting of the umbilical cord
- | Suction (nasal, oral)

### Emergency Simulation

- | Chest compression
- | Endotracheal intubation
- | BVM ventilation

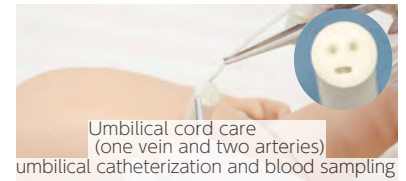
\*The product is not designed for bathing.

## ANATOMY

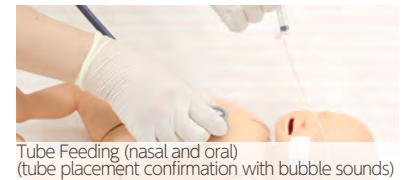
- | ribs
- | bronchi
- | lungs
- | stomach
- | esophagus
- | umbilical cord



Palpation of the anterior fontanelle



Umbilical cord care  
(one vein and two arteries)  
umbilical catheterization and blood sampling



Tube Feeding (nasal and oral)  
(tube placement confirmation with bubble sounds)



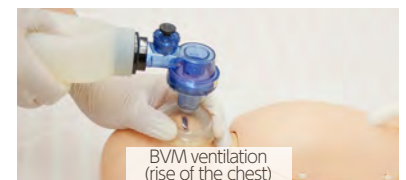
Airway suctioning (nasal and oral)



Chest compression



Endotracheal intubation  
(confirmation of unilateral/bilateral ventilation)



BVM ventilation  
(rise of the chest)

## DESCRIPTIONS

### SPECIFICATIONS

Size: 50 cm / 19.6 inch Weight: 2.6kg / 5.7 lbs

### SET INCLUDES

- 1 newborn manikin
- 1 lubricant
- 1 instruction manual

### MATERIALS

Soft resin  
Latex free

### REPLACEMENT PARTS

- 11400-010 1 mask for MW21, MW32
- 11400-020 1 chest skin for MW21, MW32
- 11400-030 4 umbilical cords for MW21, MW32
- 11229-050 1 lubricant

### RECOMMENDED DEVICES

Feeding tube: 5fr.  
Suction catheter: 5fr.  
Endotracheal tube: 3.0mm ID  
Umbilical catheter: 5fr., 30cm  
Laryngoscope: #0  
BVM: neonatal

\* Instruments are not included.





MW21B



NEW

# NCPR Simulator Plus



Intravenous catheter insertion  
(vein localization via transillumination is possible)

## Added functions of PICC and IVC insertion to the standard NCPR Simulator

### FEATURES

- 1 | Transillumination of the right hand and foot for IVC insertion
- 2 | Accessible veins on the right arm and leg for PICC insertion

### SKILLS

In addition to NCPR Simulator, NCPR Simulator Plus trains:  
IV access with transilluminator guidance

#### Accessible veins:

- | right arm basilic vein
- | right arm dorsal vein
- | right leg saphenous vein
- | right leg popliteal vein

\*The product is not designed for bathing.

### SPECIFICATIONS

Size: 50 cm / 19.6 inch  
Weight: 2.6kg / 5.7 lbs

### SET INCLUDES

- 1 newborn manikin
- 1 lubricant
- 1 instruction manual

### MATERIALS

Soft resin  
Latex free

### DESCRIPTIONS

#### REPLACEMENT PARTS

- 11400-010 mask
- 11400-020 chest skin
- 11400-030 umbilical cord
- 11400-040 1 right arm skin
- 11400-050 1 right leg skin
- 11400-310 4 vein tubes for right arm
- 11400-320 4 vein tubes for right leg
- 11400-080 abdomen
- 11388-400 10 simulated blood sticks (swab type)
- 11229-050 lubricant

#### RECOMMENDED DEVICES

Feeding tube: 5 fr.  
Suction catheter: 5 fr.  
Endotracheal tube: 3.0mm ID  
Peripheral venous catheter: 28G x 30 cm  
Umbilical catheter: 5fr., 30cm  
Laryngoscope: #0  
BVM: neonatal

\* Instruments are not included.

MW33



NEW

# ELBW Infant Simulator



26-29 weeks gestation



## Extremely low birth weight infant model offers the opportunities to practice fundamental skills in NICU

### FEATURES

- 1 | A male infant of 26-29 weeks gestational, 900g weight
- 2 | Resuscitation training including chest compression and endotracheal intubation
- 3 | Life-like softness and delicateness
- 4 | Articulated head and neck

### SKILLS

- | Changing body position, hygiene care in an incubator
- | Whole body assessment and measurement
- | Oral gastric and Nasogastric Tube placement
- | Insertion of urinary catheter
- | Bag valve mask resuscitation
- | Chest compression
- | Endotracheal intubation
- | Nasal CPAP

### ANATOMY

- | bronchi
- | esophagus
- | stomach
- | articulated head and neck

\*The product is not designed for bathing.

### SPECIFICATIONS

Size: 35cm / 13.7 inch  
Head circumference: 28cm / 11 inch

### SET INCLUDES

- 1 ELBW manikin
- 1 lubricant
- 1 instruction manual

Weight: 0.9kg / 2 lbs

### MATERIALS

Soft resin  
Latex free

#### REPLACEMENT PARTS

- 11413-010 1 mask for MW33
- 11229-050 1 lubricant

#### RECOMMENDED DEVICES

Feeding tube: 3fr.  
Suction catheter: 3fr.  
Endotracheal tube: 2.0-2.5 mm ID  
Laryngoscope: #00  
Urine catheter: 6fr.  
BVM: neonatal (small)

\* Instruments are not included.



M59/M63



# Newborn Bathing and Nursery Care Model



## Soft, seamless newborn manikin for skills training

Life-size 0-4 week-old infant, with the realistic weight and balance of newborn babies

### FEATURES

- 1 | Non-rigid neck flexibility
- 2 | Palpable anterior and posterior fontanel
- 3 | Bendable and stretchable limbs
- 4 | Seamless, one-piece waterproof structure
- 5 | Removable umbilical cord

### SKILLS

- | Bathing
- | Umbilical cord care
- | Bottle-feeding
- | Ear and nose care
- | Diaper and clothes changing
- | Physical measurement

### DESCRIPTIONS

#### SPECIFICATIONS

Size: 50 cm / 19.6 inch

Weight: 3 kg / 6.6 lbs

Head circumference: 33 cm / 13 inch

#### SET INCLUDES

- |                   |                      |
|-------------------|----------------------|
| 1 newborn manikin | 1 cloth cover        |
| 1 umbilical cord  | 1 instruction manual |
| 1 feeding bottle  |                      |
| 1 baby cloth      |                      |

#### MATERIALS

Soft resin

Latex free

#### RECOMMENDED DEVICES

-

#### REPLACEMENT PARTS

11258-080 Umbilical cord

M58



# Newborn Vital Signs Examination Simulator

## Life-size newborn manikin for basic vital sign assessments

### Product Supervision

Keiko Takahashi, professor  
College of Nursing Science,  
Fukui Prefecture University



### FEATURES

- 1 | Arterial pulse in wrists, neck and temples
- 2 | Heart sounds are recorded from actual patients and synchronized with arterial pulses
- 3 | All vital signs can be controlled with the control unit

### SKILLS

#### Vital signs examination

- | Heart sounds
- | Respiration
- | Pulses: superficial temporal, carotid and radial arteries (bilateral)
- | Body temperature (rectal thermometry)

### DESCRIPTIONS

#### SPECIFICATIONS

Size: 50cm / 19.6 inch

Weight: 1.1kg / 2.4 lbs

Power: AC100-240V

Power Consumption: 30W

#### SET INCLUDES

- |                   |                      |
|-------------------|----------------------|
| 1 newborn manikin | 1 instruction manual |
| 1 control box     |                      |
| 1 thermometer     |                      |
| 1 baby cloth      |                      |
| 1 storage case    |                      |

#### MATERIALS

Soft resin

Latex free

#### RECOMMENDED DEVICES

-

#### REPLACEMENT PARTS

-

M56B



# Pediatric Patient Care Simulator

## A comprehensive day-to-day, long-term care manikin for pediatric patients

Provides a variety of features for practicing essential skills and simulates pediatric patient care scenarios for nurses and caregivers

### Product Supervision

Medical Association of Osaka Prefecture  
Pediatric Medical Care Exploratory Committee



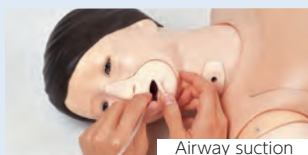
### FEATURES

- 1 | Life-like 6 years old model
- 2 | Able to sit in an upright position without support.
- 3 | Oral, nasal and tracheal airway suction interchangeable female and male genitalia for catheterization training.

### SKILLS

- | Positioning
- | Patient handling
- | Airway suction:  
oral, nasal or through a tracheostomy opening
- | Percutaneous Endoscopic Gastrostomy (PEG) care
- | Feeding tube management
- | Male & female catheterization

### IMAGES



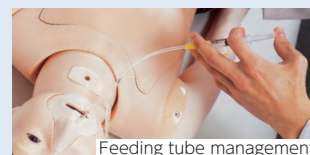
Airway suction



Airway suction



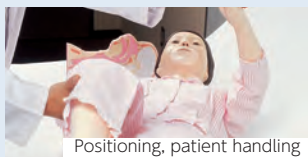
Airway suction



Feeding tube management



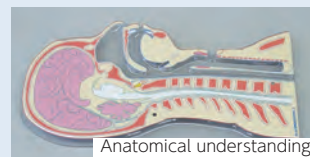
PEG care



Positioning, patient handling



Male &amp; female catheterization



Anatomical understanding

### DESCRIPTIONS

#### SPECIFICATIONS

Size: 125cm / 49.2 inch Weight: 13kg / 28.6lbs

#### SET INCLUDES

- |                               |                                      |
|-------------------------------|--------------------------------------|
| 1   pediatric manikin         | 1   strap-on IV venipuncture trainer |
| 1   head & neck anatomy plate | 1   uniform (gym clothes)            |
| 1   male & female genitalia   | 1   set of catheters (sample)        |
| 1   syringe                   |                                      |
| 1   irrigation bag            |                                      |

#### MATERIALS

Soft resin, hard resin  
Latex free

#### RECOMMENDED DEVICES

-

#### REPLACEMENT PARTS

- 11355-020 head and mask explanation panel  
11355-030 1 valve for catheterization  
11355-040 replacement mouth/ nose part

\* Instruments are not included.



M95

## Simulator Pediatric IV Hand



### Set of pediatric hands for practicing IV

Become confident in safe insertion of intravenous cannulas on small infant hands with thin and soft veins

#### FEATURES

- 1 | Fingers and dorsum of hand are flexible, able to be gripped, and
- 2 | repositionable as in real-life procedures.
- 3 | Two puncture sites on the back of the hand
- 4 | Practice dressing and securing the cannula

#### SKILLS

- | Pediatric dorsal veins injection
- | Blood collection
- | Intravenous infusion

#### DESCRIPTIONS

##### SPECIFICATIONS

Size: W23 x D6 x H5 cm / W9 x D2.3 x 1.9 inch (one-year-old) Power: AC100-240V  
W30 x D8 x H6 cm / W11.8 x D3.1 x 2.3 inch (three-year-old) Power Consumption: 5W

##### SET INCLUDES

2 injection arm-hands (one-year-old)	1 spoon
2 injection arm-hands (three-year-old)	1 plastic jar
2 stands	1 plastic beaker
1 circulation pump	1 storage case
1 jar of coloring powder (red)	1 instruction manual

##### MATERIALS

Soft resin, hard resin  
Latex free

##### RECOMMENDED DEVICES

indwelling needle: 23G  
butterfly needle: 23G

\* Needle not included.

##### REPLACEMENT PARTS

11350-010	1 replacement injection arm-hand (three-year-old)
11350-020	1 replacement injection arm-hand (one-year-old)

M43D

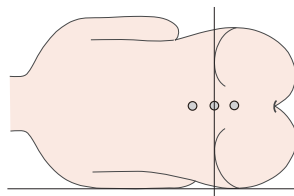
## Pediatric Lumbar Puncture Simulator II

### Acquire skills for safe pediatric lumbar puncture

The full body is soft and bendable to facilitate realistic body positioning required for a safe and successful lumbar puncture.



Level of posterior superior iliac crests



#### Product Supervision

Takahiro Amano, M.D.  
Vice President  
Senior Vice-Dean, Postgraduate School  
Professor and Director, Center of Postgraduate  
Medical Education International University of Health  
and Welfare,  
Honorary Director, Sanno Medical Center  
Gregory A. Plotnikoff, M.D., M.T.S., F.A.C.P.  
Medical Director, Abbott Northwestern Hospital

#### FEATURES

- 1 | Soft, seamless baby manikin allows practice in safe patient positioning and holding.
- 2 | Two types of puncture pads: deep or shallow
- 3 | Realistic needle tip resistance
- 4 | Anatomically correct landmarks for palpation

#### SKILLS

- | Patient positioning
- | Palpation of landmarks
- | Lumbar puncture and CSF collection
- | CSF pressure measurement

#### DESCRIPTIONS

##### SPECIFICATIONS

Size: W43 x D34 x H20 cm Weight: 1.5 kg / 3.3 lbs  
W17 x D13.4 x H7.8 inch

##### SET INCLUDES

1 baby manikin (7-10 months)	1 syringe (50mL)
2 pediatric LP block (shallow)	1 instruction manual
2 pediatric LP block (deep)	
1 irrigation bag	
1 stand for irrigation bag	

##### MATERIALS

Soft resin  
Latex free

##### RECOMMENDED DEVICES

22G-24G spinal needle

##### REPLACEMENT PARTS

11348-100-04	stand for irrigation bag
11348-100-05	irrigation bag
11348-010	pediatric LP block (shallow)
11348-420	pediatric LP block (deep)

\* Needles are not included.



MW29



NEW

# Oral Care Simulator Advanced

## Oral care simulator which can mimic various patient conditions

True-to-life oral cavity and the denture sets  
Actual water can be used to clean oral cavity



### FEATURES

- 1 | Viewable and accessible trachea and esophagus
- 2 | Interchangeable denture with tooth diseases
- 3 | Simple set-up and head positioning
- 4 | Includes washable plaque and oral thrush
- 5 | Suction training with water

### SKILLS

- | Oral cavity assessment
- | Care of the oral mucous membrane
- | Brushing and cleaning of the oral cavity
- | Identifying oral thrush
- | Care for humidity retention
- | Replacement and maintenance of the denture
- | Understanding of airway suction
- | Massage of oral cavity

### KEY FEATURES

#### Oral anatomy of denture with problems

- | spaced arch
- | food residue
- | anodontia
- | stomatitis
- | isolated tooth
- | oral thrush
- | crowding
- | gingival recession
- | root fracture
- | stump of a tooth



#### Patient conditions

- | Complete denture
- | Dental problems
- | Toothless
- | Intratracheal intubation
- | Tracheostomy
- | Tube feeding

#### Patient positions

- | Sitting position
- | Half sitting position
- | Lateral position

### DESCRIPTIONS

#### SPECIFICATIONS

Size: W20xD33xH24.5 cm / 8x13x9.5 inch

#### SET INCLUDES

1 head/neck manikin	1 simulated residue	1 storage case
1 base	1 mirror	1 instruction manual
1 normal denture	2 sponge-tipped swabs	
1 denture with tooth disease	1 toothbrush	
1 denture case	1 denture brush	

#### MATERIALS

Soft resin  
Latex free

#### REPLACEMENT PARTS

11408-020	normal denture
11408-030	denture with tooth disease
11408-010	simulated residue

\* Instruments are not included.





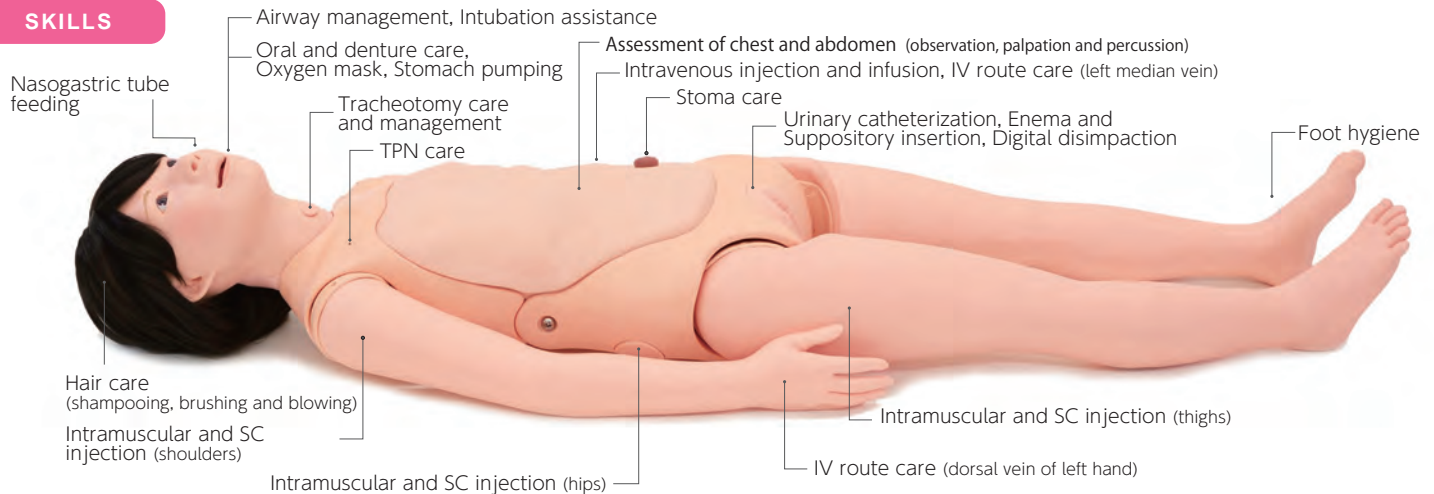
# Patient Care Simulator "Yaye"

## Patient simulator for uninterrupted care in community and hospital setting

Featuring more than 40 training skills, Yaye can be used in simulations for all health care workers, including students and experienced staff



### SKILLS



#### Feeding

- | Tube feeding (oral/nasal)

#### Elimination

- | Urinary catheterization
- | Stoma care
- | Bedpan practice

#### Exercise

- | Positioning
- | Patient transfer

#### Pain Management

- | Heat and cold compression

#### Hygiene

- | Oral care
- | Bed bathing
- | Change of clothes
- | Perineal care
- | Hair care
- | Grooming and appearance

#### Respiratory Care

- | Oxygen management
- | Airway suction
- | Postural drainage
- | Tracheotomy care

#### Wound Care

- | Pressure sore care
- | Dressing management

#### Drug Administration

- | Central line care
- | Subcutaneous injection
- | Intramuscular injection
- | Intravenous injection and infusion
- | Enema and suppositories
- | Per vaginal medication

#### Critical Care

- | Intubation assistance
- | Chest compression
- | Airway management

#### Assessment

- | Assessment of chest and abdomen

#### Others

- | Gastric aspiration
- | Postmortem care

## KEY FEATURES

### ASSESSMENT OF CHEST AND ABDOMEN

Soft and elastic abdomen allows deep palpation



- | Thoracoabdominal inspection, palpation and percussion
- | Anatomical landmarks and soft tissue offer realistic training

Observation

Palpation

Percussion

### PATIENT VARIETIES

Variable age, sex and personality



Variations in face masks, wigs and external genitals offer wide possibilities of simulation settings and realistic training.



Easy Transformation

\* The elderly face mask and the elderly wig with gray hair are optional parts.

### INFUSION CARE AND MANAGEMENT

IV route training



- | Left median vein:  
IV injection, infusion, securing cannula with tapes
- | Left hand dorsal vein:  
Securing cannula with tapes, care during infusion



### INTUBATION ASSISTANCE

Airway management and CPR



Critical care such as perioperative situations and in ICU settings can be simulated.

- | Preparation of equipment
- | Oral intubation (laryngoscope and video laryngoscope)
- | Confirmation of successful ventilation by:
  - Observation of thoracic movement (lung expansion)
  - Auscultation of the chest
- | Securing the tube in place with tape
- | Chest compression

## DESCRIPTIONS

### SPECIFICATIONS

Size: 152cm / 59.8in. Weight: 17kg / 37.5lbs

### SET INCLUDES

- 1 manikin
- 1 denture
- 1 wig (black)
- 1 face mask (young)
- 1 injection pad (median vein)
- 2 shoulder injection pads
- 2 thigh injection pads
- 2 hip IM pads
- 1 female genitalia (catheterization)
- 1 female genitalia (suppository insertion/digital disimpaction)

### MATERIALS

Soft resin  
Latex free

- 1 set of simulated suppository
- 1 set of simulated feces
- 1 lubricant (for airway suction etc.)
- 1 lubricant (for catheterization etc.)
- 1 irrigation bag
- 1 drainage pump (urinary bladder)
- 1 drainage pump (rectum)
- 1 drainage hose
- 1 set of pajamas
- 1 instruction manual

### REPLACEMENT PARTS

11404-080	6 valves for urinary catheterization	11404-020	face mask (young)
11251-350	rectal valve	11404-040	wig (young)
11251-330	simulated feces set	11404-060	female genitalia (catheterization, enema)
11251-320	simulated suppository set	11251-310	female genitalia (suppository insertion, digital disimpaction)
11251-040	2 thigh injection pads	11229-050	lubricant (for airway suction etc.)
11251-030	2 shoulder injection pads	11381-800	lubricant (for catheterization)
11251-050	2 hip IM pads		
11404-050	4 injection pad (median vein)		
11404-070	male genitalia		
11404-010	face mask (elderly)		
11404-030	wig (elderly)		

\* Medical instruments are not included.





# Basic Patient Care Simulator "Keiko"

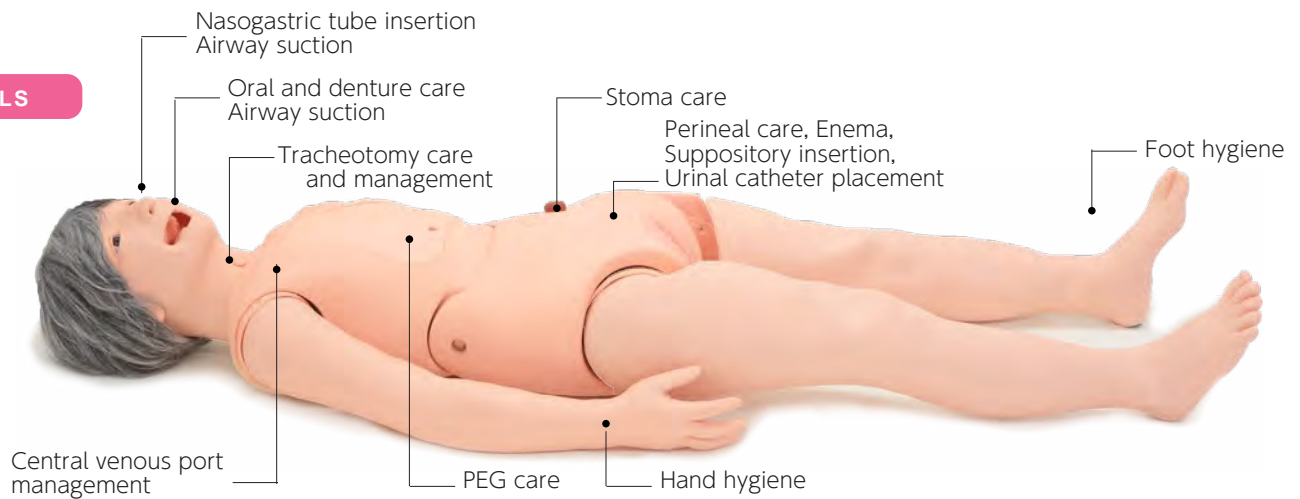
## Meet Keiko :

**Patient simulator of geriatric care for trainees including home-care nurses and caregivers**

Keiko simulates patients under long-term cares in a variety of health care settings



### SKILLS



#### Feeding

| Tube feeding (oral/nasal)

#### Exercise

| Body positioning  
| Patient transfer

#### Wound Care

| Pressure sore care

#### Pain Management

| Hot and Cold Compressions

#### Elimination

| Enema  
| Urinary catheterization  
| Stoma care  
| Bedpan practice

#### Hygiene

| Oral care  
| Bed bathing  
| Change of clothes  
| Perineal care  
| Hair care\*  
| Grooming and appearance

#### Respiratory Care

| Oxygen inhalation  
| Airway suction  
| Postural drainage  
| Tracheotomy care

#### Others

| Postmortem care

#### Drug Administration

| Suppository

\* Optional



## KEY FEATURES

### Basic Patient Care

#### Oral Care

- Oral care on the bed and wheel chair
- Special care for patients with feeding tubes



- | Oral assessment
- | Teeth brushing
- | Denture care

#### Pressure sores care

- Learn stages of pressure sores
- Pressure sore care



- | Stage 2: Scapula
- | Stage 3: Great trochanter
- | Stage 4: Sacrum bone
- | Unstageable: Heel

#### Perineal care

- Anatomically correct genitals for detailed care



#### Body positioning and transfer

- Communication
- Correct manual handling techniques
- Patient safety



- | Changing body positions
- | Supporting patient transfer

### Medical Understanding

#### Airway Suction

- Understanding the procedure



- | Airway suction:  
oral, nasal and tracheotomy  
(\*tube insertion only)
- | Tube feeding:  
oral, nasal and PEG  
(\*tube insertion only)

#### Daily care with medical understandings



- | Stoma care
- | Bed bathing for the patients with central venous port
- | Perineal care for the patients with urinal catheters



Photo: Kyoto College of Nursing

\* A wheelchair is not included.

## DESCRIPTIONS

### SPECIFICATIONS

Size: 149 cm / 58.7 inch    Weight: 15kg / 33lbs

### SET INCLUDES

1 manikin	1 male genitalia
1 denture	1 under pants
1 wig	1 wrench
1 oral cover for suctioning	1 instruction manual
1 female genitalia	

### MATERIALS

Latex free  
Soft resin

### REPLACEMENT PARTS

11405-010	female genitalia
11405-020	male genitalia
11401-080	denture
11229-060	oral cover for suctioning
11229-050	lubricant for training models
11381-800	lubricant for catheterization

### OPTIONAL PARTS

12746-020	tracheotomy tube
11251-320	simulated suppository set
11251-330	simulated feces set
11405-030	pajamas
11404-030	washable wig (elderly)
11229-070	sputum

### RECOMMENDED DEVICES

Nasogastric tube feeding:  
-Nasal catheter 12fr -14fr  
-Gastrostomy catheter for replacements 20fr  
Indwelling Urinary Catheter:  
16fr (male) / 14fr (female)

MW22

# Patient Care Simulator "Cherry"

## Basic patient care manikin for introductory nursing

A basic full-body, nursing manikin that offers trainings of patient care for health care professionals



### FEATURES

- 1 | Able to sit in upright position
- 2 | Seamless limbs up to fingers and toes
- 3 | TPN and IV routes to simulate patients with catheter lines
- 4 | True-to-life articulation for patient handling

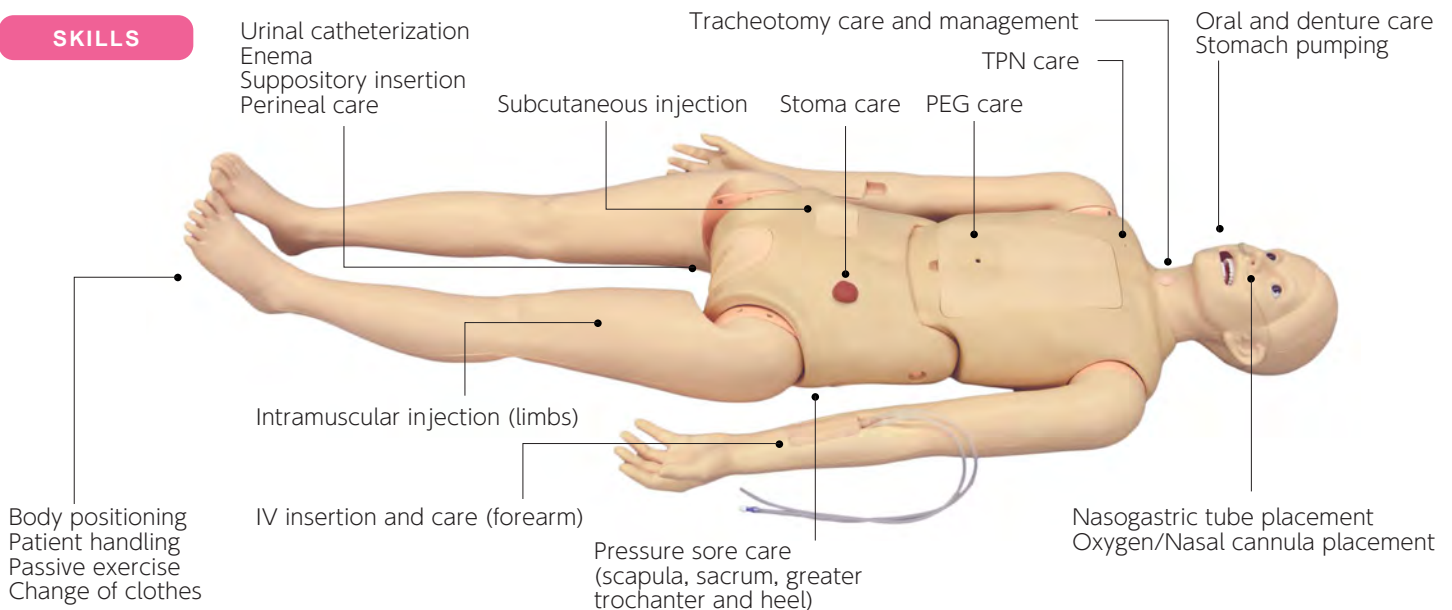


Subcutaneous injection



Wound care

### SKILLS



### DESCRIPTIONS

#### SPECIFICATIONS

Size: 157 cm/62 inch

#### SET INCLUDES

- |  |                    |
|--|--------------------|
| 1 manikin  | 1 female genitalia |
| 1 denture  | 1 male genitalia   |
| 1 set of injection pads<br>(subcutaneous / gluteal / femoral IM<br>/ upper arm IM) | 1 wound care pad   |
|  | 1 bottle           |
|  | 1 syringe          |

#### MATERIALS

Soft resin  
Latex free

#### REPLACEMENT PARTS

- |           |  |
|-----------|--|
| 11401-010 | insulin injection pad for MW22 (a set of 6)      |
| 11401-020 | gluteal IM pads for MW22 (a set of 4)            |
| 11401-030 | female genitalia unit for MW22                   |
| 11401-040 | male genitalia unit for MW22                     |
| 11401-050 | shoulder IM pads for MW 22 (a pair)              |
| 11401-060 | thigh IM pads for MW22                           |
| 11401-070 | wound care pad for MW22 (a pair)                 |
| 11401-080 | dentures (a set of upper & lower) for MW22, MW26 |
| 11401-090 | stomach for MW22                                 |
| 11388-200 | median antebrachial pad                          |

MW2A



## Male Catheterization/Enema Simulator

MW52



## Female Catheterization/Enema Simulator II



MW2A



MW52

### High quality simulators for urethral catheterization, perineal care and enema practice

Achieve better training results with our soft and realistic catheterization simulator that can also be used on SP or full body manikins.

#### FEATURES

- 1 | Soft and flexible genitalia allow proper cleaning and procedural preparation
- 2 | Successful insertion confirmation by fluid outflow
- 3 | Enema insertion in lateral position
- 4 | Detachable external genitalia

#### SKILLS

- |                                 |                                  |
|---------------------------------|----------------------------------|
| Intermittent catheterization    | Cleansing and aseptic technique  |
| Indwelling catheterization      | Catheter insertion and placement |
| Perineal care                   | Catheter Removal                 |
| Enema                           | Manual bladder compression       |
| Localization of urethral meatus |                                  |

Compact sets consist of a genitalia unit and accessories, for hybrid training and table top demonstration.

**MW2C** 11381-199-B

Male Genital Unit only



**MW2D** 11433-299-B

Female Genital Unit only



Enema Training



Pass of catheter can be observed through transparent bladder reservoir



#### DESCRIPTIONS

##### SPECIFICATIONS

Size: 34x33x24cm / 13.5x13x9.5 inch

##### SET INCLUDES

- |  |
|--|
| 1 lower torso manikin                                |
| 1 genital organ unit                                 |
| 3 valves (one is incorporated in the assembled unit) |
| 1 irrigation bottle                                  |

##### MATERIALS

Soft resin  
Latex free

- |                             |
|-----------------------------|
| 1 rectum tube               |
| 3 irrigation drainage tubes |
| 1 lubricant                 |
| 1 storage case              |
| 1 instruction manual        |

##### REPLACEMENT PARTS

- |              |   |
|--------------|---|
| 11381-100-01 | clip (small) for urethral tube for MW2A |
| 11381-100-02 | clip (large) for rectum unit            |
| 11381-100-03 | urinary bladder reservoir               |
| 11381-100-04 | rectum unit                             |
| 11381-300    | 6 replacement valves for MW2A/MW52      |
| 11433-010    | 1 replacement female skin               |
| 11433-020    | 2 replacement female meatus             |
| 11381-800    | lubricant                               |
| 11381-410    | 1 replacement male skin                 |
| 11381-510    | 2 replacement male meatus               |

##### RECOMMENDED DEVICES

\* Catheters are not included.

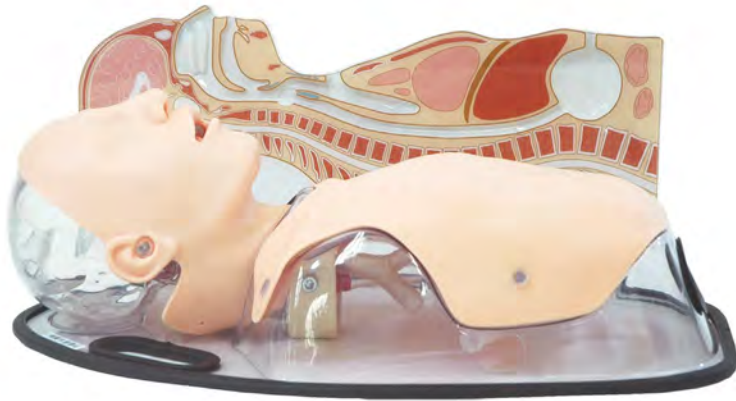
MW8



# Tube Feeding Simulator (NG, OG and PEG)

## Gastric tube management simulator to learn theories and skills

Can be used as an effective educational tool for caregivers and health care professionals  
The manikin has three routes and is compatible with real liquid



The manikin can be set in Fowler's position.

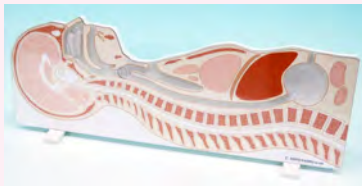
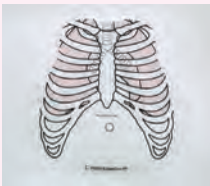
### FEATURES

- 1 | Feeding tube insertion and confirmation of the tube placement (NG/OG)
- 2 | Transparent structure which allows direct observation of progress
- 3 | and tube placement  
Cross-section panel and chest anatomy map for theoretical
- 4 | understandings  
Flexible neck to learn appropriate neck/head positioning

### SKILLS

- | Nasogastric/ oral gastric insertion, management and tube placement confirmation
- | PEG tube management
- | Physiological understanding
- | Gastric aspiration

### KEY FEATURES



To facilitate anatomical understanding, the feeding routes panel for demonstration and the chest anatomy to overlay the manikin come with the set. The panel is sold separately as MW5.



### Feeding Tube Insertion

Nasogastric and oral tube insertion



### Administration through three Routes

Actual liquid can be administered through mouth, nose and PEG tube. Medication administration techniques can also be simulated (using water).

### DESCRIPTIONS

#### SPECIFICATIONS

Size: 60x37x23cm / 25.6x14.6x9inch Weight: 4.4kg/9.7lbs

#### SET INCLUDES

- |                |                             |
|----------------|-----------------------------|
| 1 male torso   | 1 tube feeding routes panel |
| 1 support base | 1 chest sheet               |
| 1 drain tube   | 1 instruction manual        |
| 1 funnel       | 1 lubricant                 |
| 1 plastic cup  |                             |

#### REPLACEMENT PARTS

- |              |                          |
|--------------|--------------------------|
| 11384-030    | 1 face mask              |
| 11386-000-01 | drain hose               |
| 11386-000-02 | tube feeding chest sheet |
| 11392-070    | band of face skin        |
| 11229-050    | 1 lubricant              |

#### RECOMMENDED DEVICES

Nasal catheter: 14fr



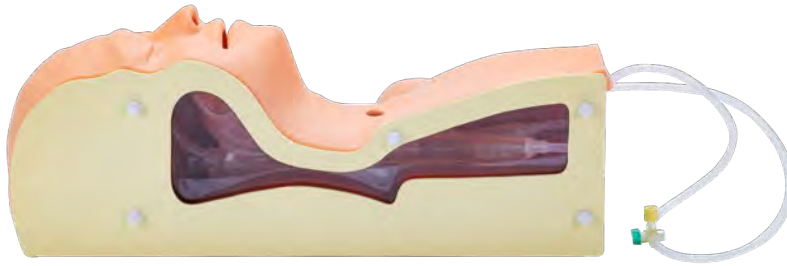
M85



# Airway Suction Trainer

## Airway suction and tracheostomy management simulator

Life-like anatomical and tactile features to further understanding temporary airway suctioning.



Nasal suction



Oral suction

### FEATURES

- 1 | Facilitate understanding of the way to insert catheter.
- 2 | Transparent cross-sectional window to monitor the catheter
- 3 | Realistically viscous simulated sputum is included
- 4 | Can be easily dismantled for cleaning
- 5 | Able to open the mouth by hand

### SKILLS

- | Oral suctioning
- | Nasal suctioning
- | Endotracheal suctioning

### LANDMARKS

- | oral cavity
- | tongue
- | oral and nasal pharynx
- | epiglottis
- | trachea
- | esophagus

### OPTIONAL PARTS

#### 11229-060 Oral Cover for training using liquid

Oral cover to store simulated sputum can be purchased as optional parts. This oral cover is to maintain the sputum inside the oral cavity.



### DESCRIPTIONS

#### SPECIFICATIONS

Size: 45x23x15cm / 17.7x9x5.9 inch      Weight: 2kg/4.4lbs

#### SET INCLUDES

- |   |                      |
|---|----------------------|
| 1 head & neck model with airway anatomy | 1 syringe            |
| 1 bottle of lubricant                   | 1 storage case       |
| 2 catheters                             | 1 lubricant          |
| 1 bottle of simulated sputum            | 1 instruction manual |
| 1 metal tray                            |                      |

#### MATERIALS

Soft resin  
Latex free

#### REPLACEMENT PARTS

- |           |                                 |
|-----------|---------------------------------|
| 11229-020 | 1 replacement skin with trachea |
| 11229-070 | 1 simulated sputum              |
| 11229-040 | 2 sample catheters              |
| 11229-050 | 1 lubricant                     |

#### OPTIONAL PARTS

- |           |                                      |
|-----------|--------------------------------------|
| 11229-060 | oral cover for training using liquid |
|-----------|--------------------------------------|

MW1



# Pitting Edema Simulator

## Five variations of pitting edema simulator including a normal one

Grades of the edemas are based on "Mosby's Guide to Physical Examination (7th ed.)"

### Product Supervision

Junji Otaki  
Professor of Tokyo Medical University



### FEATURES

- 1 | Grades of the edemas are based on "Mosby's Guide to Physical Examination (7th ed.)"
- 2 | The models can be attached to the lower leg of a simulated patients or a training manikin.
- 3 | 4 levels of pitting edema according to pressures and the depth of indentations.
- 4 | Repeatable and accurate, as if palpating actual skin surface to the fibula.

### SKILLS

- | Differentiation of the pitting edema: four different levels of edemas and a normal case
- | Assessment of edemas on the lower legs

### KEY FEATURES



Normal

1+ Light Pitting

2+ Moderate Pitting

3+ Deep Pitting

4+ Very Deep Pitting

### DESCRIPTIONS

#### SPECIFICATIONS

Size: 10x23cm / 3.9x9 inch

#### SET INCLUDES

- 5 variations of strap-on pitting edema model 1 piece each

#### MATERIALS

Soft resin  
Latex free

M66

# Medical Foot Care Simulator

## Simulate basic podiatric care

The maintenance of healthy feet makes a significant impact on the patient's quality of life. Training for simple trimming of nails and callosities as well as general education on basic foot care.

### Product Supervision

Takako Egawa  
Dean, Professor, Kansai University of  
Nursing and Health Sciences  
Professor Emeritus, Kyoto University



Trimming and removal of the callosities



Trimming and removal of the corns

### FEATURES

- 1 | Realistic sensation and anatomically accurate
- 2 | Replaceable nails, corn and callosities

### SKILLS

- | Trimming and clipping of toe nails (thickened nail, ingrown nail and nail ringworm)
- | Trimming and removal of callosities
- | Trimming and removal of corns
- | Foot assessment (demonstration)
- | Foot massage (demonstration)

## DESCRIPTIONS

### SPECIFICATIONS

Size: W21xD21xH28cm/ 8.3x8.3x11 inch Weight:1.2g/2.9lbs

### SET INCLUDES

1	foot model with swivel stand	10	callosities
20	toe nails A (thickened ingrown nail)	10	corns
20	toe nails B (thickened nail with ringworm)	1	instruction manual

### REPLACEMENT PARTS

11273-020	1 replacement parts set for M66	11273-030	Replacement toe nail A 20 pcs
	-toe nail A 20 pcs	11273-040	Replacement toe nail B 20 pcs
	-toe nail B 20 pcs	11273-050	Replacement callosity 10 pcs
	-callosity 10 pcs	11273-060	Replacement corn 10 pcs
	-corn 10 pcs		

\* Instruments are not included.

M69

# Pressure Sores Care Simulator



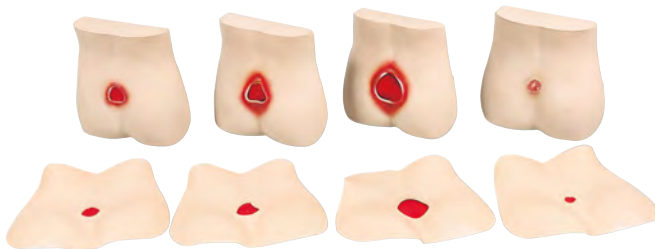
## Identify four different stages of pressure ulcers

### FEATURES

- 1 | 4 pressure sore manikins for classroom demonstration
- 2 | 4 pressure sore skin sets for hands-on care
- 3 | Watercolor paint and palette set included for painting original pressure sores and cleansing of the sores.

### SKILLS

- | Pressure sores staging
- | Pressured area care



## DESCRIPTIONS

### SPECIFICATIONS

Size: 38x38cm / 15x15 inch

### SET INCLUDES

4	types of the models for demo
4	types of the sore skins model
1	set of water color paints
1	set of brushes
1	set of palettes

### MATERIALS

Soft resin  
Latex free

MW43

NEW

# "AbdoAbby" Abdominal Examination Simulator

**True-to-life tactile representation of abdominal organs to cultivate the sense of touch and serve as a benchmark during palpation.**

## Product Supervision

Takahiro Amano, M.D.,  
Senior Advisor for Academic Affairs and Professor  
International University of Health and Welfare,  
Honorary Director Sanno Medical Center, Japan

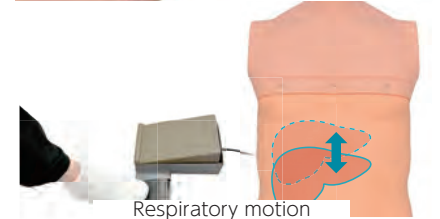
Kyoko Arai  
RN, PHN, PhD, Professor,  
School of Nursing, University of Shizuoka, Japan



Interchangeable organs



Supple, resilient and delicate texture



Respiratory motion

## FEATURES

- 1 | Supple, resilient and delicate textures which allow both shallow and deep palpation
- 2 | Interchangeable organs
- 3 | Respiratory motion
- 4 | Abdominal auscultation

## SKILLS

- | Visual Inspection
- | Auscultation
  - renal artery
  - abdominal aorta
  - iliac artery
  - bowel sounds
- | Palpation
  - liver, spleen, kidney, uterus and lymphoma
- | Percussion
  - liver, spleen and rib

## KEY FEATURES

### Bony landmarks

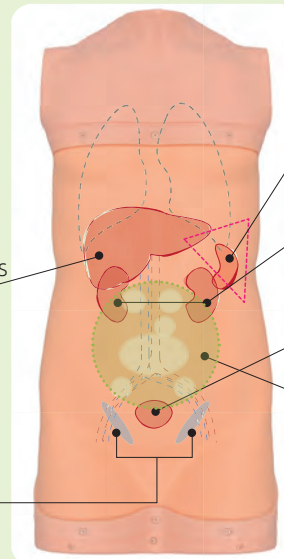
- | Pelvis
- | Ribs
- | Lower rib cage
- | Costal margin
- | Xiphisternum
- | Pubic crest
- | Anterior superior iliac spines

### Liver

- | Normal
- | Chronic hepatitis
- | Early late cirrhosis
- | Cirrhosis

### Inguinal area

- | Normal
- | Lymphoma



### Spleen

- | Normal
- | Enlarged
- | Slightly enlarged

### Kidney

- | Normal
- | Hydronephrosis
- | Polycystic kidney

### Uterus

- | Normal
- | Myoma

### Bruits and sounds

- Renal artery
- | Abdominal aorta
- | Iliac artery
- | Bowel sounds

## DESCRIPTIONS

### SPECIFICATIONS

Size: 40x80x20cm / 15.7x31.5x7.9 inch

Weight: 14kg / 30.9lbs

### MATERIALS

Soft resin  
Latex free

### SET INCLUDES

- |   |   |
|---|---|
| 1 torso unit  | 2 inguinal lymph nodes (normal, lymphoma) |
| 1 talcum powder   | 2 uterus (normal, fibroid)                |
| 1 set of the respiratory motion control unit                  | 1 simulated stethoscope                   |
| 2 kidneys (hydronephrosis, cysts)                             | 1 controller                              |
| 2 spleens (slightly enlarged, enlarged)                       | 1 AC adapter                              |
| 4 livers (precirrrosis, cirrhosis, chronic hepatitis, normal) | 3 storage cases                           |
|   | 1 instruction manual                      |



MW7B

NEW

# Blood Pressure Measurement Trainer ver.2

## Become familiar with the physiology of hypertension by blood pressure observations

With 9 preset cases, the simulator allows student lead practice in accordance with the blood pressure data obtained



Manual Inflation



Korotkoff Sounds



Palpation

### FEATURES

- 1 | Nine preset cases:
- 2 | Blood pressure values can be digitally controlled at three points  
- Phases I, IV and V
- 3 | Realistic auscultation of phase I to V Korotkoff sounds
- 4 | Radial artery pulses synchronized with sound and cuff pressure
- 5 | Deflation rate can be numerically monitored
- 6 | Excessive cuff pressure is warned by beeping
- 7 | Random play mode for self-learning

### SKILLS

- | Cuff placement
- | Manual cuff inflation
- | Auscultation of Korotkoff sounds
- | Palpation of radial pulses
- | BP reading
- | Cuff deflation

### 👍 Nine Preset Cases

- 1 | hypotensive
- 2 | normal
- 3 | prehypertension
- 4 | mild hypertension
- 5 | moderate hypertension
- 6 | severe hypertension
- 7 | isolated systolic hypertension
- 8 | auscultatory gap
- 9 | absence of Phase V Korotkoff sounds

### DESCRIPTIONS

#### SPECIFICATIONS

Size: 70x19x17cm/27.7x7.5x6.7 inch Weight: 2.65kg/5.84lbs

Power: AC100V-240V 50/60Hz

Power Consumption: 10W

#### MATERIALS

Soft resin, Latex free

#### SET INCLUDES

1   arm model	1   aneroid sphygmomanometer unit
1   controller	1   instruction manual
1   AC adaptor	1   carrying bag
1   power cable	



# Physical Assessment Simulator "Physiko"

## Physiko is more than just one simulated patient

Physiko is designed to simulate physical assessment situations for health care trainees. Twelve preset cases simulate typical complaints to provide practical experience in abnormal findings.

### Product Supervision

Toyoaki Yamauchi, MD, ND, PhD  
Professor  
Department of Nursing Graduate School of  
Medicine Nagoya University

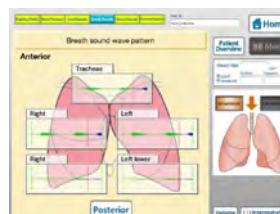


## CASES

Assessment item	Condition		
Pupillary reflex	Normal	Pupillary construction	
	Pupillary dilation	Bilateral asymmetry	
Blood pressure	Arbitrary-setup		
Auscultation of lung sounds	Normal	Bronchial breathing	Wheezes
	Weak in the left lung	Coarse crackles	Rhonchi
	Absent in the right lung	Fine crackles	
Auscultation of heart sounds	S2 split (-)	Aortic stenosis	Atrial fibrillation
	S2 split (+)	Mitral regurgitation	Arterial flutter
	S3 gallop	Mitral stenosis	Premature ventricular contraction (single)
	S4 gallop	Aortic regurgitation	Ventricular flutter
	S3 and S4 gallop	Sinus tachycardia	Ventricular fibrillation
	Innocent murmur	Sinus bradycardia	Sound volume adjuster
Auscultation of bowel sounds	Normal	Decrease	Ileus
	Increase	Subileus	
ECG simulation	Normal	Ventricular flutter	
	Atrial fibrillation	Ventricular fibrillation	
	Atrial flutter	Myocardial infarction (acute stage)	
	Premature ventricular contraction	Myocardial infarction (subacute stage)	
	Ventricular tachycardia	Myocardial infarction (chronic stage)	



Pupillary reflex



Auscultation of lung sounds

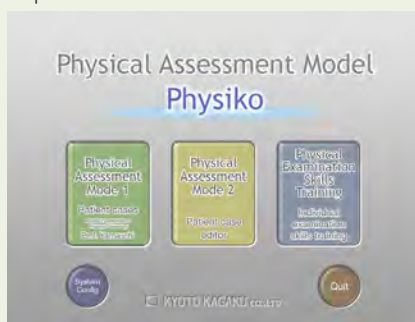
## KEY FEATURES

### Physical Assessment Mode 1

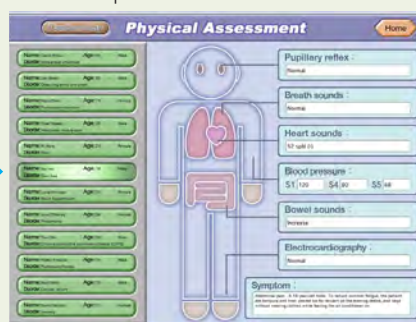
#### Patient Cases

Physiko's twelve preset patient scenarios cover typical complaints such as thoracic pain and breathing difficulty.

Top menu



Choose a patient



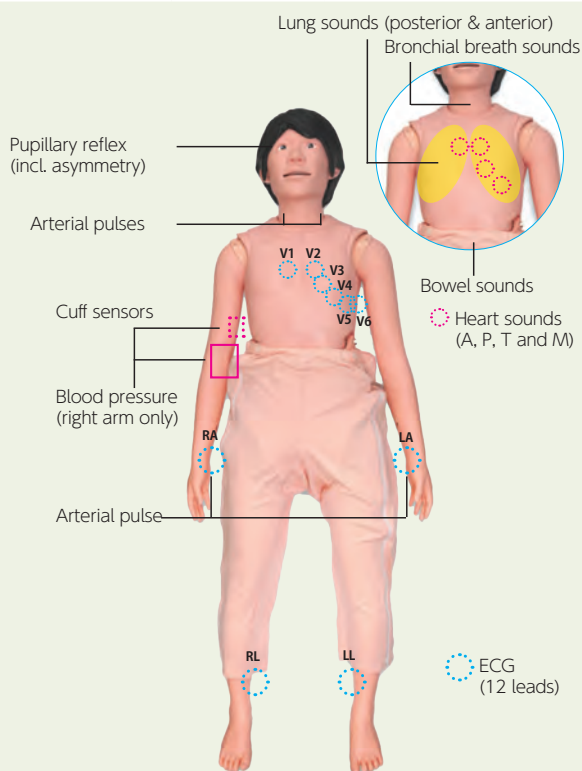
Start a session



**Cases** Comprehensive examination of 12 typical patients

Case	Age, Sex	Condition
Thoracic Pain	58, Male	Myocardial Infarction
	55, Male	Dissecting Aortic Aneurysm
	76, Female	Lung Infarction
	28, Male	Intercostal Muscle Ache
Abdominal Pain	26, Female	Ileus
	19, Male	Diarrhea

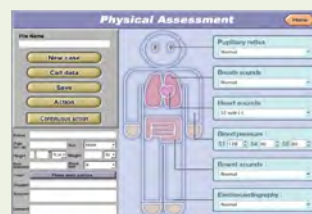
Case	Age, Sex	Condition
Lie Unconscious	36, Female	Brain Hypertension
	84, Female	Pneumonia
	66, Male	Chronic Obstructive Lung Disease (COPD)
Stuffy Feeling	70, Male	Pulmonic Fibrosis
	73, Male	Heart Failure
	21, Female	Anemia



### Physical Assessment Mode 2

#### Patient Cases Editor

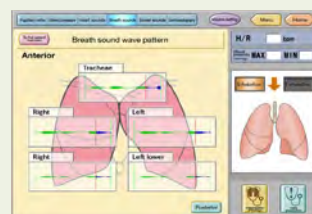
Users can create new simulated patients by selecting from the built-in options.



### Physical Assessment

#### Skills Training

Physiko allows individual assessment skills training



## DESCRIPTIONS

### SPECIFICATIONS

Size: 155cm/61 inch Weight: 24kg/53lbs

Power: AC100V-240V 50/60Hz

Power Consumption: 70W

### SET INCLUDES

- 1 manikin
- 1 terminal box
- 1 ECG electrodes unit
- 1 laptop PC
- 1 sphygmomanometer unit
- 1 set of clothes

### MATERIALS

Soft resin, hard resin  
Latex free



# Cardiology Patient Simulator "K" ver.2

## Hone your senses and skills for bedside cardiology

See, listen, and feel.

The cardiology patient simulator K ver.2 provides comprehensive hands-on training in cardiology and its complications.

### Product Supervision:

Japanese Educational Clinical Cardiology Society.  
Toshio Amano, Masaya Kino, Takaharu Saito, Tsunekazu Takashina



### CASES

(MODE 1) Comprehensive patient simulation with sounds, pulses, apex beats and ECG

No.	Normal heart simulation (12 cases)	No.	Heart disease simulation (14 cases)	No.	Arrhythmia (10 cases)
A-01	S2 split (-) HR: 60	B-01	aortic stenosis	C-01	sinus arrhythmia
A-02	S1 split (+)	B-02	mitral regurgitation	C-02	sinus tachycardia
A-03	S2 split (+)	B-03	mitral stenosis	C-03	sinus bradycardia
A-04	S2 wide split	B-04	aortic regurgitation	C-04	ventricular premature contraction(1)
A-05	S3 gallop	B-05	hypertrophic cardiomyopathy	C-05	ventricular premature contraction(2)
A-06	S4 gallop	B-06	mitral steno-regurgitation	C-06	ventricular premature contraction(3)
A-07	pulmonic ejection sound	B-07	pulmonic valvular stenosis	C-07	sino-atrial block
A-08	S3 and S4 gallop	B-08	atrial septal defect	C-08	atrio-ventricular block
A-09	innocent murmur	B-09	ventricular septal defect	C-09	atrial fibrillation
A-10	midsystolic click sound	B-10	tricuspid regurgitation	C-10	atrial flutter
A-11	S2 split (-) HR: 72	B-11	acute mitral regurgitation		
A-12	S2 split (-) HR: 84	B-12	patent ductus arteriosus		
		B-13	mitral valvular prolapse		
		B-14	dilated cardiomyopathy		

(MODE 2) Arrhythmia simulation, auscultation training with ECG

A		B		C		D	
A-01	normal sinus R	B-01	atrial flutter	C-01	VVI pacemaker	D-01	vpc (quadrigeminy)
A-02	sinus tachycardia	B-02	av block	C-02	atrial pacemaker	D-02	vpc (trigeminy)
A-03	sinus arrhythmia	B-03	av block & crbbb	C-03	vent pacemaker	D-03	vpc (bigeminy)
A-04	apc solitary	B-04	av block (digial)	C-04	av seq pacemaker	D-04	vpc (couplet)
A-05	apc bigeminy	B-05	av block (mobitz)	C-05	icrbbb	D-05	pvc (repetitive)
A-06	actopic pacemaker	B-06	av block (mobitz)	C-06	crbbb	D-06	pvc (R-on-T type)
A-07	wondering pacemaker	B-07	av block (3:1&4:1)	C-07	clbbb	D-07	non-sustained VT
A-08	coronary sinus R	B-08	av & crbbb	C-08	clbbb	D-08	vent tachycardia
A-09	sinus bradycardia	B-09	paroxysm atr tachy	C-09	clbbb (by ami)	D-09	vent flutter
A-10	ss syndrome	B-10	av junc R(svt)	C-10	wpw syndrome	D-10	vent fibrillation
A-11	atrial fibrillation	B-11	av junc R (pat)	C-11	wpw syndrome	D-11	vent R (sinus cond)
A-12	atrial flutter	B-12	av junc R	C-12	wpw syndrome	D-12	accel vent rhythm
A-13	atrial flutter fib	B-13	ac junc contraction	C-13	vpc (solitary)	D-13	agonal rhythm

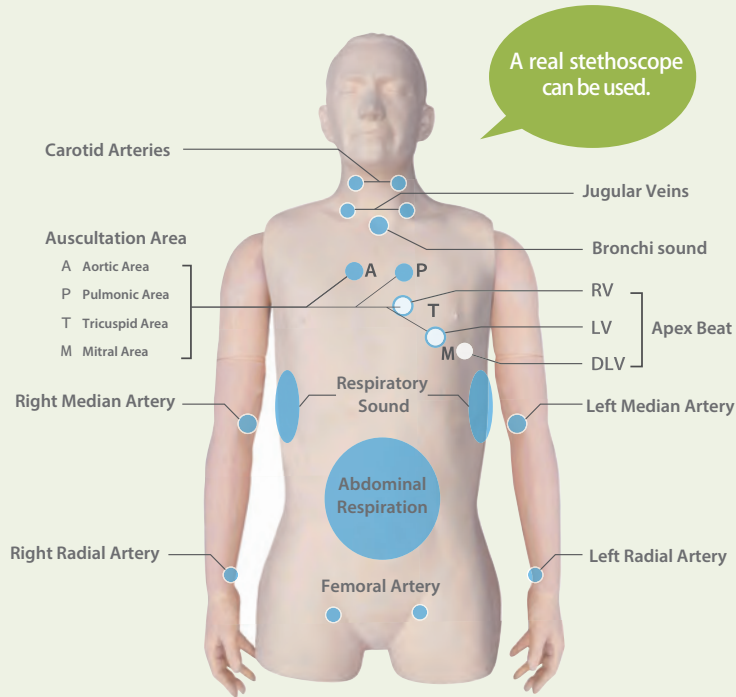


## KEY FEATURES

### Basic Skill Training

#### Physical findings of Simulator "K" ver.2

Comprehensive Clinical Examination Training



#### Heart Sounds and Murmurs

Auscultation synchronized with electrocardiograms and findings.

- differentiation of S1, S2, S3 and S4
- distinction between systolic and diastolic murmurs

#### Pulse examination

Slight variations of the arterial pulse waves under different cardiac conditions or arrhythmias can be detected by pulse examination.

#### Observation of Jugular Veins

The strength and timing of "α" and "V" waves vary with cases.

#### Palpation of Apex Beat

Simulated RV, LV and DLV can be palpated

#### Monitoring Screen

Real time dynamic charts on the screen:

- phonocardiogram
- sphygmogram (CAP/JVP/AC)
- electrocardiogram (ECG)

#### Respiratory Sounds and Abdominal Movement

Respiratory cycles are represented to understand respiratory conditions.

### For Effective Training Sessions

#### Up to 5 Simulators at One Time

OSCE, group session and scenario based simulation



Up to five cardiology simulated cases can be controlled by one wireless tablet. Able to set different conditions in each simulator.

The system allows:

- scenario based training that involves more than one patient.
- skills assessment sessions with different cardiovascular stations.

#### Playlist System

Simulator "K" is not just for individual task training. Incorporated "Play List Maker" facilitates creation of scenario based training sessions whose conditions vary over time.

#### Playlist Maker facilitates:

- sessions with temporal change in physical findings.
- standardization of training contents among different instructors.
- saving time for preparation.

#### Ready-to-use

Simple connection and all-in-one unit structure.

#### Error Indicator

The error indicator performs check-up of the system to keep Simulator K in its best condition.

### DESCRIPTIONS

#### SPECIFICATIONS

Size: 145x75x170cm/57x30x70 inch  
Weight: 145kg/320lbs  
Power: AC100V-240V 50/60Hz  
Power Consumption: 400W

#### MATERIALS

Soft resin, hard resin  
Latex free

#### SET INCLUDES

1	main unit with the model body	1	control PC
1	external speaker (built-in the unit)	1	rib sheet
1	PC / keyboard / mouse (built-in the unit)	1	storage cover
1	air compressor unit (built-in the unit)	4	textbooks
1	main monitor	2	instruction manuals
			-built-in help file of software operation
			-instruction manual

\* A stethoscope is not included.



# Lung Sound Auscultation Trainer "LSAT" ver.2

**Used by 96% of medical faculties in Japan,  
LSAT is now renewed and improved!**

In just a few taps away, improve lung assessment skills by combining theory and practice with real lung sound recordings and case information.

## Product Supervision

Chiharu Yoshii, M.D., Ph.D.,  
Assistant Professor  
Masamitsu Kido, M.D., Ph.D., Professor  
Division of Respiratory Disease, University  
of Occupational and Environmental Health,  
Japan



\* A stethoscope is not included.

## CASES

Background heart sounds are available in 5 volume levels.

Normal	
A01	standard
A03	mildly strong sounds
A05	mildly rapid
A07	loud heart sounds

Coarse crackles	
C01	right lower area
C03	both lower area
C05	right upper and middle area
C07	left lower area
C09	both upper area
C11	whole area

Wheezes	
E01	upper area 600-700Hz
E03	upper area 350-450Hz
E05	upper area 200-1000Hz

Miscellaneous continuous sounds	
G01	stridors
G03	squawks

Abnormal	
B01	weak: left lower area
B02	weak: left whole area (adhesion)
B05	weak: left whole area(pneumothorax)
B07	absent: right middle and lower areas
B09	weak: right whole area
B11	absent: right whole area
B13	weak: whole area
B15	bronchial breathing

Fine crackles	
D01	both lower area
D03	both middle lower area
D05	whole area (IPF)
D07	whole area (NSIP)

Rhonchi	
F01	trachea and upper area 150-250Hz
F03	trachea and upper area 150-450Hz (polyphonic)
F05	trachea and upper area 80-120Hz
F07	whole area 80-200Hz

Miscellaneous	
H01	pleural friction rubs: right lower and middle area
H03	pleural friction rubs: left lower area
H07	Hamman's sign
H09	Vocal fremitus

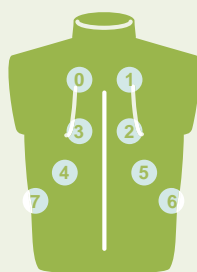
## KEY FEATURES

### Basic Features



**Anterior**

1. trachea
2. upper right lung field
3. upper left lung field
4. middle left lung field
5. middle right lung field
6. lower right lung field
7. lower left lung field

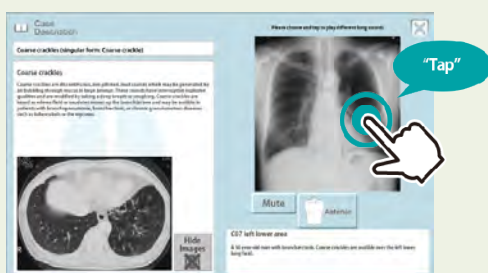


**Posterior**

0. upper left lung field
1. upper right lung field
2. middle right lung field
3. middle left lung field
4. lower left lung field
5. lower right lung field
6. right costophrenic angle
7. left costophrenic angle

### Case Information

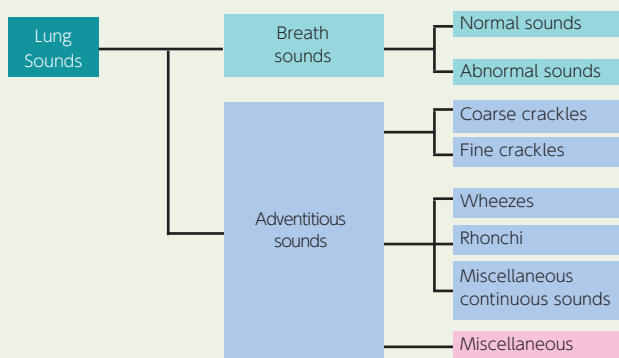
Images of plain X-ray, CT and bronchoscopy are included.



Lung sound of each area can be played by tapping the plain X-ray image

### Classification of Lung Sounds

Based on acoustic analysis of recorded lungs sounds, each are classified according the American Thoracic Society standards. With this approach, lung sounds are categorized as continuous (wheezes, rhonchi, or stridor) or discontinuous (crackles). Crackles are further identified as fine or coarse.



### NEW Features



#### Wireless multi-unit operation

Up to five "LSAT" can be controlled by one wireless control PC.



- Each simulator can be individually programmed
- Cases can be switched at any time with a simple touch



#### Simultaneous anterior and posterior auscultation

Two or more trainees can work together at the same time



#### LED light panel to indicate inspiration and expiration

Attention to respiration rate while auscultating during examination



#### Create a custom playlist

With 36 different cases. Playlist mode enables optimization of training sessions.



#### Error Indication System

The error indicator performs check-up of the system to keep LSAT in its best condition.

## DESCRIPTIONS

### SPECIFICATIONS

Size: 39x39x130cm  
/15.3x15.3x51.2 inch  
Power: AC100V-240V 50/60Hz  
Power Consumption: 180W

### MATERIALS

Soft resin  
Latex free

### SET INCLUDES

- 1 LSAT2 main unit
- 1 control PC
- 1 LSAT T-shirt
- 1 instruction manual

# EAR Examination Simulator II

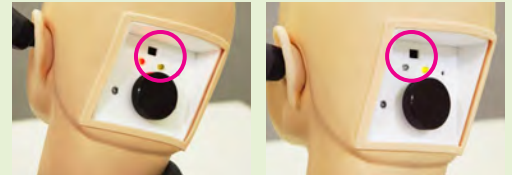
## Practice patient-focused care during an otoscopy

EAR II is an otoscopy simulator that focuses on patient safety.

With a sensitive alarm system, patient discomfort can be alerted when the otoscope was excessively inserted.



### KEY FEATURES



Alarm against painful insertion



Quick switch between cases

### FEATURES

- 1 | Alarm against painful insertion:  
-beep (self learning mode)  
-silent, red light/yellow light (instructor mode)
- 2 | 9 preset cases
- 3 | Quick switch between cases
- 4 | Ear canals come in 2 sizes - normal and stenosis
- 5 | Includes simulated foreign bodies and ear wax
- 6 | Anatomically accurate and soft ear whose auricle can be pulled to straighten the auditory canal
- 7 | Work with an actual otoscope
- 8 | The manikin neck can be tilted
- 9 | Training is possible with both left and right ears

### SKILLS

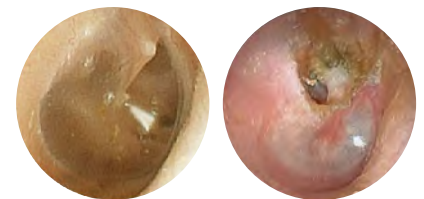
- | Ear examination with a direct otoscope
- | Ear wax and foreign body removal

### CASES

- | normal
- | serious otitis media (SOM)
- | mucoid otitis media (MOM)
- | chronic otitis media with perforation
- | acute suppurative otitis media (AOM)
- | cholesteatoma
- | tympanosclerosis
- | traumatic perforations
- | cerumen block

## A42 Ear anatomy B

Includes a portion of the cochlea dissected transversally, the scala vestibuli, scala tympani, canalis cochlea and hearing organs.



normal

cholesteatoma

### DESCRIPTIONS

#### SPECIFICATIONS

Size: 42x22x39cm/16.5x8.7x15.3 inch

Weight: 1.75kg/3.85lbs

#### SET INCLUDES

- |  |                                     |
|--|-------------------------------------|
| 1   manikin head and shoulder                                      | 1   types of ear units -1 pair each |
| 1   set of foreign body removal kit                                | -exam ear (normal)                  |
| -simulated ear wax, small toys, small sponge fragments and a spoon | -exam ear (stenosis)                |
|  | -FB ear (normal)                    |
| 1   instruction manual   | -FB ear (stenosis)                  |

#### REPLACEMENT PARTS

- 11391-010 ear units and foreign body set  
-4 types of ear units - 1 pair each  
ear exam (normal), ear exam (stenosis), FB ear (normal), FB (stenosis)  
-1 set of foreign body removal kit  
simulated ear wax, small toys, small sponge fragments and a spoon



M82



## EYE Examination Simulator (3 steps)

M82A

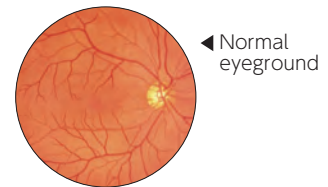
## EYE Examination Simulator (2 steps)

### Practical fundus examination simulator with 10 clinical images and variations.

An innovative trainer for fundus examination compatible with actual ophthalmoscope. Various cases can be set using combination of slides, depth variations and pupil diameter.

#### Product Supervision

Japan Society for Medical Education  
Working Group with the cooperation of:  
Kansai Medical University Department of Ophthalmology



◀ Normal eyeground



◀ Hypertensive retinopathy

#### FEATURES

- 1 | 10 fundus slide cases of common eye diseases
- 2 | Real clinical images
- 3 | Lens-equipped eyeball units that simulate the visual axis of the human eye
- 4 | Soft and supple material, making the raising of the eyelid realistic
- 5 | Adjustable depth of the fundus slides: hyperopic, normal, and myopic views.
- 6 | Red reflex can be detected
- 7 | Different sizes of pupil can be set at 3 steps in M82, 2 steps in M82A

#### SKILLS

- | Fundus examination with direct ophthalmoscope

#### CASES

- | Normal fundus
- | Hypertensive retinopathy:
  - Grade 3 arteriolar vasoconstriction
  - Grade 1 arteriolosclerosis
  - hemorrhages and cotton wool spots
  - simple vein concealment
- | Diabetic retinopathy:
  - microaneurysm, hemorrhages and hard exudates
- | Papilloedema (chronic phase)
- | Papilloedema (acute phase)
- | Glaucomatous optic atrophy:
  - glaucomatous optic disc cupping and nerve fiber defect
- | Retinal vein occlusion (acute phase):
  - flame-shaped hemorrhage and cotton wool spots
- | Retinal vein occlusion (post retinal laser photocoagulation)
- | Toxoplasmosis: retinochoroiditis
- | Age-related macular degeneration:
  - macular exudates and subretinal hemorrhage

※M82A includes two normal fundus slides.

### A36 Eye anatomy B

The optic nerve and the ocular muscles are represented, as well as the nerves and blood vessels. The eyeball can be dissected to show the choroids vitreous body, lens, etc.



#### DESCRIPTIONS

##### SPECIFICATIONS

Size: 42x22x38cm / 16.5x8.7x15 inch Weight: 2kg / 4.4lbs

##### SET INCLUDES

- |   |                        |
|---|------------------------|
| 1   manikin head and shoulder                 | 1   set of case slides |
| - 3 steps (2, 3.5, 5 mm dia.) *M82            | 1   slide duster       |
| - 2 steps (3.5, 8mm dia.) *M82A               | 1   storage case       |
| 1   1 slide holder with 3 steps depth setting | 1   instruction manual |

##### MATERIALS

\*Latex is included in the blower

##### REPLACEMENT PARTS

11220-010 1 replacement fundus case slides (set of 10 cases)

\* ophthalmoscope is not included.

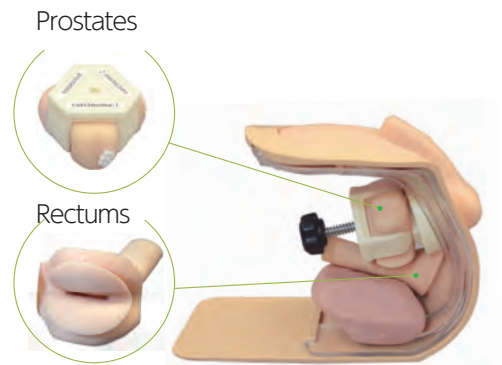
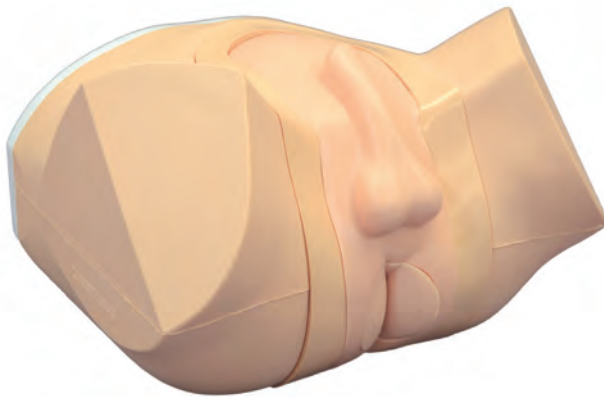


MW20

# Prostate and Rectal Simulator

## 2-in-1 simulator for prostate and rectal exams

The Prostate and Rectal Simulator includes 9 types of prostates and 4 types of rectums which can easily be changed  
The lower torso manikin can be positioned in 3 different ways



### FEATURES

- 1 | Nine types of prostate simulate different scenarios
- 2 | Four rectum units
- 3 | Training with multiple prostates and rectal cases are concurrent and time efficient
- 4 | Lateral, supine and prone positioning
- 5 | 3 revolving units with 9 prostates can easily be changed.

### SKILLS

- | Digital-examination of the prostate and rectum
- | Insertion and the use of the anal-scope and the proctoscope

### KEY FEATURES

#### Cases: Nine types of Prostates



- |                  |                |                |
|------------------|----------------|----------------|
| #1 normal        | #4 prostatitis | #7 carcinoma 3 |
| #2 enlargement 1 | #5 carcinoma 1 | #8 carcinoma 4 |
| #3 enlargement 2 | #6 carcinoma 2 | #9 carcinoma 5 |

#### Cases: Four Rectum Units



- |                    |  |
|--------------------|--|
| #1 normal          | #3 large carcinoma                     |
| #2 small carcinoma | #4 polyp combines with small carcinoma |

### DESCRIPTIONS

#### SPECIFICATIONS

Size: 34x33x24cm / 13.4x13x9.4 inch

#### SET INCLUDES

1 lower torso manikin	4 rectum units
3 prostate units	1 Vaseline
(include 9 types of prostates)	1 storage case

#### MATERIALS

Soft resin  
Latex free

#### REPLACEMENT PARTS

11399-010 prostate unit A(normal, enlargement 1&2)  
11399-020 prostate unit B(prostatitis, carcinoma 1&2)  
11399-030 prostate unit C(carcinoma 3,4&5)  
11399-040 rectum (normal)  
11399-050 rectum (small carcinoma)  
11399-060 rectum (large carcinoma)  
11399-070 rectum (polyp and small carcinoma)  
11399-080 skin

US-11

# Scrotal Ultrasound Phantom

## Master techniques for a safe and painless examination

Hands-on training to accurately diagnose scrotum abnormalities

### Product Supervision

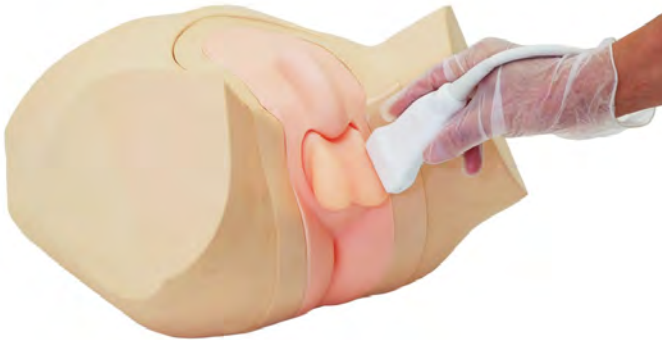
Charlotte Henningsen, MS, RT(R), RDMS, RVT,  
FSDMS, FAIUM  
Chair & Professor - Sonography Department  
Adventist University of Health Sciences

### FEATURES

- 1 | Two types of interchangeable scrotums: normal and pathology
- 2 | Excellent ultrasound image quality

### SKILLS

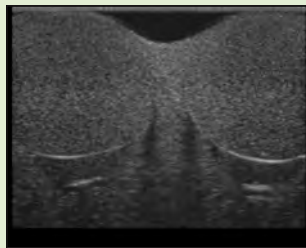
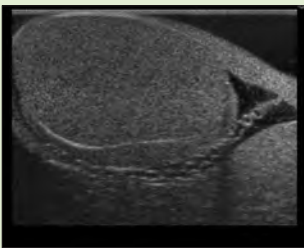
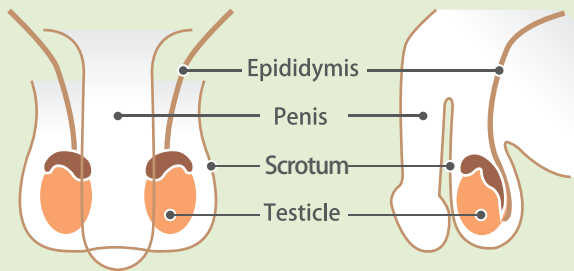
- | Patient positioning and preparation for examination
- | Scrotal ultrasound screening
- | Visualization of testicular cancer



### KEY FEATURES

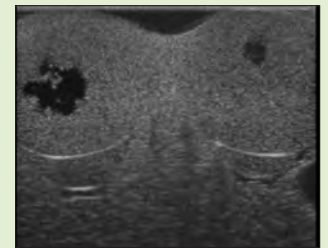
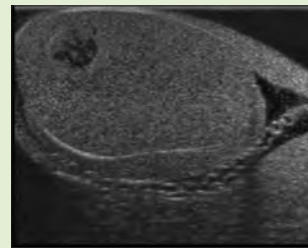
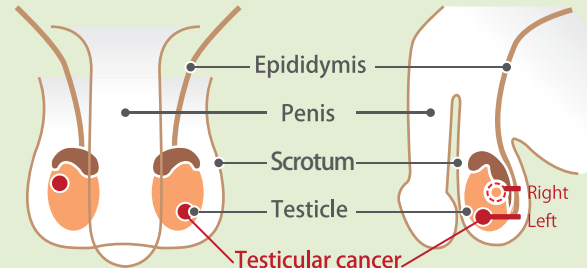
#### Normal phantom

- scrotum, testicle, epididymis and penis



#### Pathological phantom

-scrotum, testicle, epididymis and penis  
-testicular cancer (each one in left and right testis, 10mm dia.)



### DESCRIPTIONS

#### SPECIFICATIONS

Size: 34x33x24cm / 13.4x13x9.4 inch Weight: 3.6kg / 7.9lbs

#### MATERIALS

- 1 pelvic body
- 1 normal scrotum
- 1 pathological scrotum
- 1 storage case
- 1 instruction manual

#### REPLACEMENT PARTS

- 41911-010 1 normal scrotum unit
- 41911-020 1 pathological scrotum unit

\* Ultrasound scanner is not included.

MW24

NEW

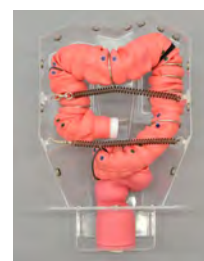
# 3D Colonoscope Training Simulator NKS

## Three dimensional representation of colon, based on analytical study of CT Colonoscopy (CTC) data

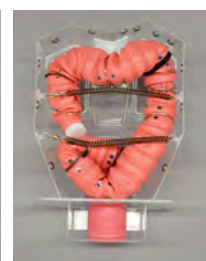
The three dimensional structure of the colon provides hands on training in a variety of skills such as prevention of loop forming, reduction of loops including a loop at LCF as well as insertion technique which forms a loop intentionally.

### Product Supervision

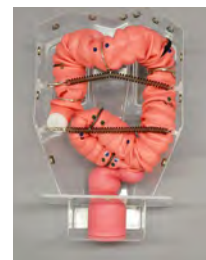
Katuhisa Noda, MD, Noda-Genki Clinic  
Takatoshi Kitada, MD, Kitada Clinic  
Yasumoto Suzuki, MD, Matsushima Clinic



Short alpha loop



Long alpha loop



N loop

### FEATURES

- 1 | Transparent skeleton body allows direct observation of the position of the tip of the scope as well as form of the colon.
- 2 | Stable rectal anatomy: the simulator is designed to acquire colonoscopy skills that use three Houston's valve as landmarks, which appear at the same position every time.
- 3 | The sigmoid colon can be pre-set to take up any one of the three most common morphologies, which are deprived from analysis of CTC. The patterns can be changed quickly by sliding attachments and moving the colon tube.
- 4 | The simulator is entirely water-resistant and can be cleaned easily by water.
- 5 | Light weight and compact, facilitating handling and transportation.

### SKILLS

- | Colonoscope insertion in three fundamental patterns:
  - Short alpha loop (pull back technique)
  - Long alpha loop (push forward technique)
  - N loop (pull back/push forward technique)
- | Colonoscope insertion in three patient positions:
  - Left lateral
  - Right lateral
  - Spine
- | Manual abdominal compression

## DESCRIPTIONS

### SPECIFICATIONS

Size: 43x28x16cm / 17x11x6.3 inch  
Weight: 6kg / 13.2lbs

### MATERIALS

Soft resin, hard resin  
Latex free

### SET INCLUDES

1 skeleton body	1 slip resistant mat
1 abdominal membrane	1 plastic jar
1 body base	15 lubricant
1 colon-rectum tube	15 colonoscope gel
(with a cap and a plug)	1 storage case
	1 instruction manual

### REPLACEMENT PARTS

11403-010 colon-rectum tube with a cap and a plug for MW24  
11403-020 lubricant packs blue for MW24 (15x50ml)  
11403-030 colonoscope gel for M24 (20ml each)

\* Endoscope is not included.



M40

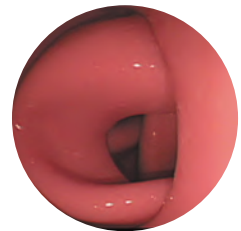
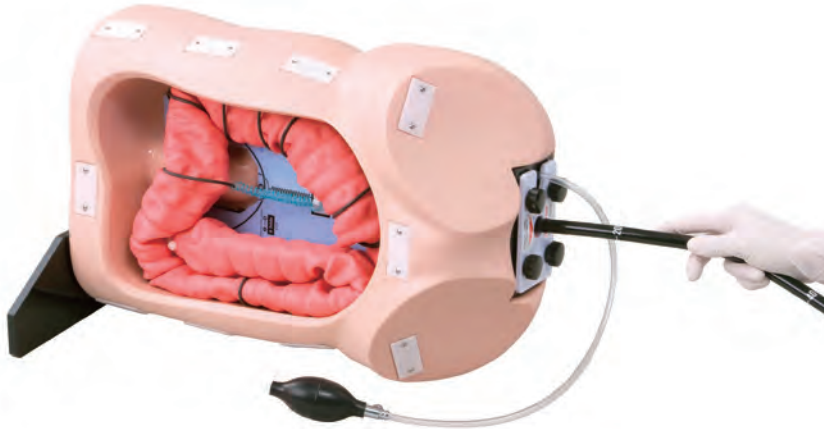


# Colonoscope Training Simulator

## Training for safe and effective colonoscopy

Soft and flexible colon tube provides a life-like colonoscopy simulation

With the focus of patient safety, skills like "loop" prevention can be practiced for safe advancement to the cecum



### FEATURES

- 1 | Offers a variety of difficulty levels. From simple, uncomplicated to complex cases
- 2 | The colon tube can be made airtight, allowing for air insufflation and suction
- 3 | The anal sphincter opening can be manipulated with a hand ball pump

### SKILLS

| Colonoscopy

### KEY FEATURES

#### Select difficulty levels of training



#### Adjustable opening of the anus



#### Positioning of the body



### DESCRIPTIONS

#### SPECIFICATIONS

Size: 48x22x30cm / 18.9x8.7x11.9 inch Weight: 6.5kg / 14.3lbs

#### SET INCLUDES

1 abdomen model	30 endoscope lubricants (20 ml each)
1 colon rectum tube	1 plastic bottle
1 anus unit	1 stand
1 air bulb	1 rubber sheet
1 abdomen skin cover	1 anus plug
1 set colon fixture	1 training guide
5 colon layout guides (6 cases total)	1 storage case
30 lubricants for colon-rectum tube (50 ml each)	1 instruction manual

#### MATERIALS

Soft resin, hard resin

Latex free

#### REPLACEMENT PARTS

11361-010	1 colon-rectum tube
11361-020	1 anus unit
11361-030	1 colon fixture set
11361-120	1 set of colon layout guide
11361-040	lubricant for colon-rectum tube (blue packs) 30 pcs x 50 ml each
11361-050	endoscope lubricant (pink packs) 30 pcs x 20 ml each
11361-090	anus plug for M40
11361-100	plastic bottle for MW40
11361-110	stand for M40

\* Endoscope is not included.



US-1B



# Ultrasound Examination Training Phantom "ABDFAN"

## Abdominal ultrasound phantom with pathologies

Unique high-fidelity abdominal ultrasound phantom that facilitates effective training compatible with your own clinical devices.

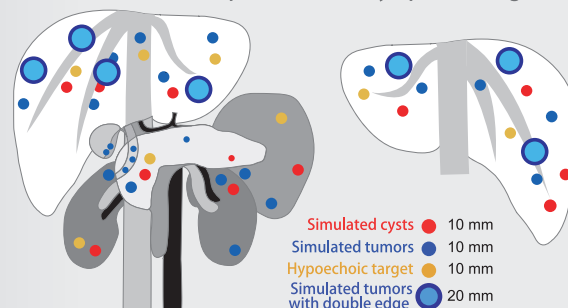
### Product Supervision

Junji Machi, MD, PhD  
University of Hawaii at Manoa and Kuakini Medical Center



Full set includes anatomical model "ECHO-ZOU"

### Simulated lesions in liver, pancreas, kidney, spleen and gallbladder



## FEATURES

- 1 Detailed hepatobiliary, pancreatic and other abdominal anatomy
- 2 Eight Couinaud's hepatic segments can be localized.
- 3 ABDFAN has various simulated lesions to provide wider training variety.

## SKILLS

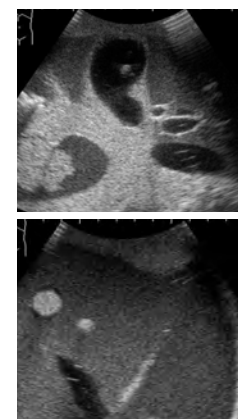
- Basics of abdominal sonography:
  - Cross sections and sonographic anatomy
  - Sonographic demonstration of each individual organ
  - Localization of hepatic Couinaud's segments

## Anatomy

- Liver (segmental anatomy, portal and hepatic venous systems, ligamentum teres and ligamentum venosum)
- Biliary tract (gallbladder, cystic duct, intrahepatic and extrahepatic bile ducts)
- Pancreas (pancreatic duct)
- Spleen / kidneys
- Detailed vascular structures (aorta, vena cava, celiac artery and its branches, portal vein and its branches, superior mesenteric vessels, renal vessels, and more)

## Pathologies

- Hepatic lesions (cystic and solid)
- Gallbladder and bile duct stones
- Pancreatic tumors (one invading the portal vein)
- Splenic lesions
- Both kidney lesions
- Left adrenal tumor



## DESCRIPTIONS

### SPECIFICATIONS

Size: 29x19x31cm / 11.4x7x12.2 inch Weight: 12kg / 26.5lbs

### MATERIALS

Polyurethane elastomer  
Latex free

### SET INCLUDES

US-1B (41900-030) "ABDFAN"	US-1B (41900-100) "ABDFAN" full set
1 ultrasound phantom "ABDFAN"	1 ultrasound phantom "ABDFAN"
1 positioning pillow	1 anatomical model "ECHO-ZOU"
1 tutorial manual (DVD)	1 positioning pillow
1 storage case	1 tutorial manual (DVD)
1 instruction manual	1 storage case
	1 instruction manual



US-1



# Ultrasound Examination Training Phantom "ECHOZY"

## Abdominal ultrasound phantom without pathologies

Unique high-fidelity abdominal ultrasound phantom that facilitates effective training compatible with your own clinical devices.

### Product Supervision

Dr. Hitoshi Asai, Director  
Osaka Kyoiku University, Health Administration Center  
Dr. Shigeru Nakamura  
Nagayoshi General Hospital, Clinical Examination  
Department



Full set includes  
anatomical model  
"ECHO-ZOU"

### FEATURES

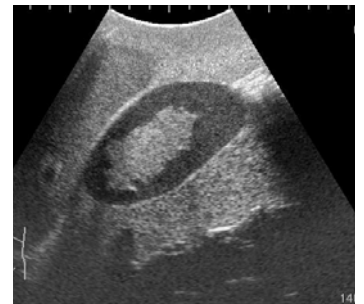
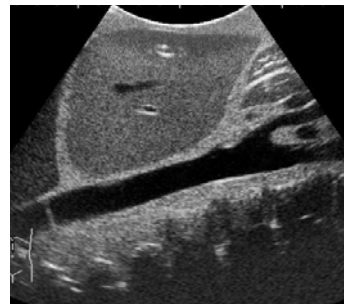
- 1 | Detailed hepatobiliary, pancreatic and other abdominal anatomy
- 2 | Eight Couinaud's hepatic segments can be localized.

### SKILLS

- | Basics of abdominal sonography:
  - Cross sections and sonographic anatomy
  - Sonographic demonstration of each individual organ
  - Localization of hepatic Couinaud's segments

### Anatomy

- | Liver  
(segmental anatomy, portal and hepatic venous systems, ligamentum teres and ligamentum venosum)
- | Biliary tract  
(gallbladder, cystic duct, intrahepatic and extrahepatic bile ducts)
- | Pancreas (pancreatic duct)
- | Spleen / kidneys
- | Detailed vascular structures  
(aorta, vena cava, celiac artery and its branches, portal vein and its branches, superior mesenteric vessels, renal vessels, and more)



## DESCRIPTIONS

### SPECIFICATIONS

Size: 29x19x31cm / 11.4x7x12.2 inch

Weight: 12kg / 26.5lbs

### MATERIALS

Polyurethane elastomer  
Latex free

### SET INCLUDES

#### US-1 (41900-010) "ECHOZY"

- 1 ultrasound phantom "ECHOZY"
- 1 set positioning pillow
- 1 storage case

#### US-1 (41900-000) "ECHOZY" full set

- 1 ultrasound phantom "ECHOZY"
- 1 anatomical model "ECHO-ZOU"
- 1 set positioning pillow
- 1 storage case



MW18



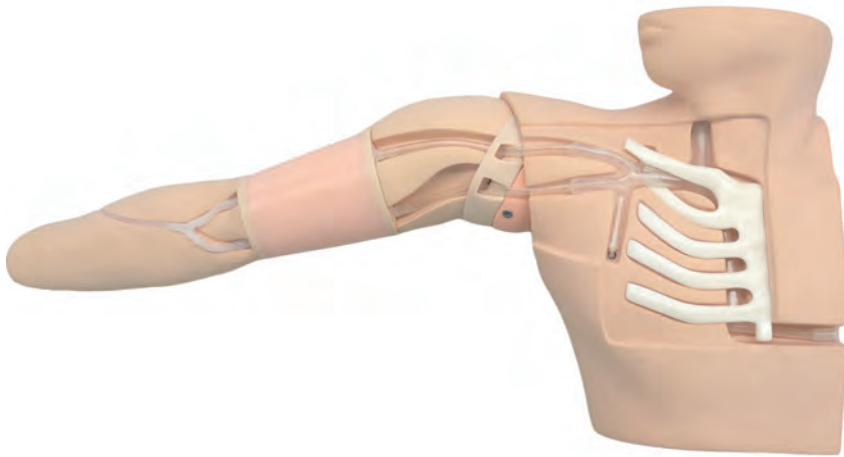
# Ultrasound-Guided PICC Training Simulator

## New, innovative, human-like material for perfect visualization

A non-complicated design with replaceable puncture site and anatomically accurate features including the rib cage, sternum, bifurcation, plus visible tip placement in the superior vena cava.

### Product Supervision

Joho Tokumine, M.D., Ph.D.,  
Department of Anesthesiology,  
Kyorin University School of Medicine



### FEATURES

- 1 | Excellent image quality and visualization of the needle tip for ultrasound guided venous access
- 2 | Movable shoulder to demonstrate positioning
- 3 | Realistic flashback in needle provides confirmation for successful venous access
- 4 | Ribs and right clavicle provide anatomical understanding of correct PICC placement
- 5 | Anatomically correct bifurcation of the vein
- 6 | Simulation of cannula malposition

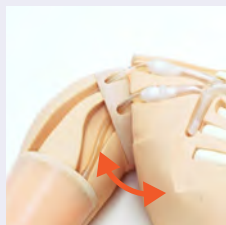
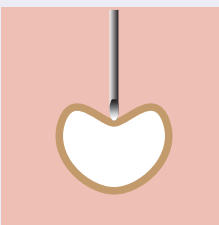
### SKILLS

- | Ensure patient comfort and position
- | Hand hygiene and prepare sterile field
- | Identify puncture site
- | Ultrasound-guided insertion
- | Insertion of dilator and guide wire
- | Insertion of sheath
- | Insertion of catheter

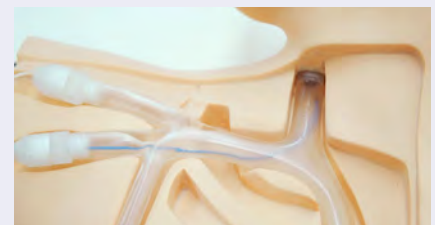
### KEY FEATURES



Ultrasound guided puncture



Movable shoulder



Malpositioning

### DESCRIPTIONS

#### SPECIFICATIONS

Size: W79 x D38 x H18 cm    Weight: 4.5kg/10lbs  
W31 x D14.9 x H7 inch

#### SET INCLUDES

- |                                       |                      |
|---------------------------------------|----------------------|
| 1 male upper torso with the right arm | 1 instruction manual |
| 2 PICC puncture pads                  | 1 storage case       |
| 10 simulated blood (swab type)        |                      |
| 1 jar                                 |                      |
| 1 syringe                             |                      |

#### MATERIALS

Soft resin, hard resin  
Latex free

#### REPLACEMENT PARTS

11398-010 2 PICC puncture pads

#### RECOMMENDED DEVICES

PIC catheter 4Fr., 50-60cm

Ultrasound scanner and PICC instruments are not included.



M93UB



# CVC Insertion Simulator II

**Conduct a variety of CVC insertion and management simulations with the assistance of 3 interchangeable pads**



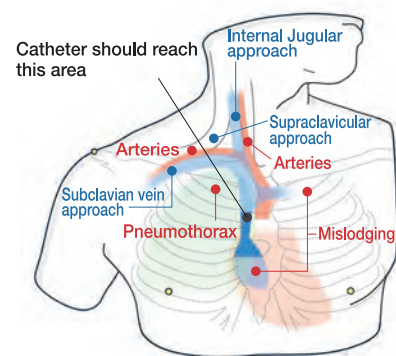
## Product Supervision

Masahiro Tanabe, M.D., Ph.D., Professor Director General Medical Education Center Chiba University School of Medicine

Kinya Sando, M.D., Ph.D., Professor Director Department of Human Dietetics Graduate School of Human Science Osaka Shoin Women's University

Masanori Hoki, M.D., Ph.D., Professor Department of Human Dietetics Graduate School of Human Science Osaka Shoin Women's University

Joho Tokumine, M.D.Ph.D., Department of Anesthesia, Kawatetsu Chiba Hospital



## FEATURES

- 1 | Realistic ultrasound-guided CVC
- 2 | Landmark puncture pad with anatomically correct vein bifurcations simulates mechanical complications including pneumothorax, mislodging and artery puncture
- 3 | Transparent anatomical block for anatomical understanding and guide wire manipulation
- 4 | Introductory ultrasound training block to acquire basics of ultrasound guided venous access
- 5 | Both internal jugular and subclavian (axillary) veins are accessible

## SKILLS

- Ultrasound-guided CVC
- Landmark guided CVC
- Ultrasound-guided venous access
- Prevention of mechanical complications

## KEY FEATURES



Transparent anatomical block



Ultrasound training block



Ultrasound puncture pad

## DESCRIPTIONS

### SPECIFICATIONS

Size: W40 x D20 x H 34 cm  
W15.8 x D7.9 x H 13.4inch

Weight: 2.3kg/5lbs

### SET INCLUDES

1 male upper torso manikin	10 red cotton swab
1 landmark puncture pad	10 blue cotton swab
1 ultrasound puncture pad	1 air bulb
1 transparent anatomical block	2 plastic jars
1 introductory ultrasound training block	1 irrigation bottle

### MATERIALS

Soft resin  
Latex free

1 syringe
1 sample syringe
1 sample needle

### RECOMMENDED DEVICES

Ultrasound scanner and needles are not included.

### REPLACEMENT PARTS

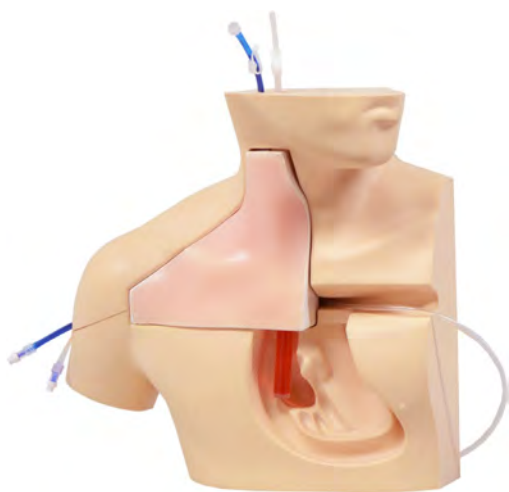
11347-119	2 landmark puncture pads
11347-170	2 ultrasound puncture pads
11347-210	2 introductory ultrasound training blocks
11347-240	2 CVC placement pads
11347-250	pulsation unit for CVC placement pad
11347-260	1 pulsation unit (for M93UB)
11347-320	irrigation bottle
11388-400	cotton swab (red, set of 10)
11402-010	cotton swab (blue, set of 10)

M93C

# CVC Insertion Simulator III

**CVC III facilitates a sequence of uninterrupted simulation experience for specialist training**

From aseptic field preparation to final catheter placement



## FEATURES

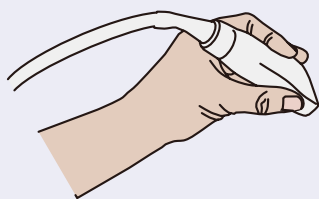
- 1 | Insertion practice is repeatable to obtain the best technique for patient safety.
- 2 | Both landmark guided insertion and ultrasound guided techniques can be practiced.
- 3 | The frictionless tissue-like simulation pad to facilitate the realistic sensation of CVC placement.

## SKILLS

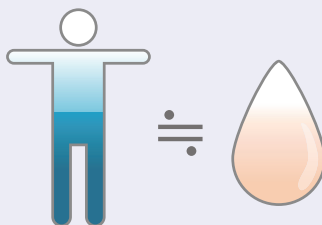
Take complete steps to a successful CVC insertion

- | Perform hand hygiene practices and prepare aseptic field
- | Decide on insertion site via ultrasound guidance or observation and palpation of landmarks
- | Insertion under ultrasound guidance or via landmark technique
- | Confirm flashback
- | Advance guidewire and sheath
- | Insert catheter

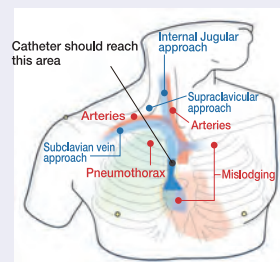
## KEY FEATURES



Ultrasound compatible



Pad material simulates features of human tissue



Anatomically accurate features including 3 insertion sites and rib cage

## DESCRIPTIONS

### SPECIFICATIONS

Size: W40 x D20 x H 34 cm  
W15.7 x D8 x H13.5 inch

### SET INCLUDES

- |                                     |   |
|-------------------------------------|---|
| 1 male upper torso manikin          | 2 vein tube (blue): 2 type                |
| 2 CVC placement pad                 | 2 vein pipe                               |
| 1 skin for cannulation training     | 1 pulsation unit (for landmark technique) |
| 1 transparent anatomical block      | 1 irrigation bottle (for UG technique)    |
| 2 artery tube (transparent): 2 type | 1 plastic jar                             |

### MATERIALS

Soft resin, hydrogel, hard resin  
Latex free

### RECOMMENDED DEVICES

Ultrasound machine and needles are not included.

### REPLACEMENT PARTS

- |           |   |
|-----------|---|
| 11347-210 | 2 introductory ultrasound training block REAL VESSELS |
| 11347-240 | 2 CVC placement pads                                  |
| 11347-260 | 1 pulsation unit (for M93UB)                          |
| 11347-320 | 1 irrigation bottle                                   |



# Arterial Puncture Training Wrist

## An essential simulator to increase confidence and competence

Arterial blood sampling and cannulation is a common yet delicate procedure.

With the innovative design of the arterial puncture simulator, a true-to-life experience can be simulated to ensure correct techniques and boost proficiency.

### Product Supervision

Dr. Hiroshi Koyama,  
Medical Director, General Internal Medicine  
National Hospital Organization Kyoto Medical Center



### FEATURES

- 1 | Palpable arterial pulse
- 2 | Realistic needle resistance against tissue and artery wall
- 3 | Natural flashback
- 4 | Radial arterial line placement can be simulated
- 5 | No puncture trace remains on the injection site
- 6 | One-touch, leak-free connections

### SKILLS

- | Radial arterial puncture
- | Artery blood sampling
- | Radial line placement



Radial Arterial Line Placement



IABP Measurement  
(The arterial pressure values are not simulated)

### DESCRIPTIONS

#### SPECIFICATIONS

Size: W20 x D9 x H16 cm (manikin size)  
W20 x D16 x H13 cm (pump size)

Power : AC100-240V, 50/60 Hz

#### MATERIALS

Soft resin  
Latex free

#### RECOMMENDED DEVICES

AGB Kit 22-25G

#### SET INCLUDES

- |   |                                  |
|---|----------------------------------|
| 1   wrist and hand model                          | 1   jar of coloring powder (red) |
| 1   circulation pump                              | 1   spoon                        |
| 2   sets of puncture skins (inner and outer skin) | 2   plastic jars                 |
| 4   artery tubes                                  | 2   connection tubes             |
| 1   silicon tape                                  | 1   vinyl sheet                  |

- |                        |
|------------------------|
| 1   syringe            |
| 1   storage case       |
| 1   instruction manual |

#### REPLACEMENT PARTS

- |           |                            |
|-----------|----------------------------|
| 11351-010 | 1 replacement skin set     |
| 11351-030 | 4 replacement silicon tape |
| 11351-040 | 4 replacement artery tube  |
| 11266-080 | 1 jar of coloring powder   |



MW4



# Ultrasound-Guided Thoracentesis Simulator

MW4A

## Ultrasound-Guided Thoracentesis Simulator - Strap-on set -

MW15

## Ultrasound-Guided Pericardiocentesis Simulator

MW17

## Ultrasound-Guided Thoracentesis/ Pericardiocentesis Simulator

### Product Supervision

Takahiro Amano, M.D.  
Vice President  
Senior Vice-Dean, Postgraduate School  
Professor and Director, Center of Postgraduate Medical Education  
International University of Health and Welfare  
Honorary Director, Sanno Medical Center



### SKILLS

### Thoracentesis

- | Patient positioning
- | Recognition of anatomical landmarks by ultrasound
- | Assessment of level and volume of pleural effusion
- | Determination of insertion site
- | Needle insertion and collection of fluid

### SKILLS

### Pericardiocentesis

- | Patient positioning
- | Visualization of pericardial fluid under ultrasound scanning
- | Landmark palpation
- | Needle insertion to the pericardial space
- | Aspiration of pericardial effusion

### DESCRIPTIONS

#### SET INCLUDES

	MW4	MW4A	MW15	MW17
1 adult chest model	✓		✓	✓
1 mid-axially line unit	✓	✓		✓
1 mid-scapular line unit	✓	✓		✓
1 pericardiocentesis unit			✓	✓
1 pillow for positioning	✓		✓	✓
1 explanation model for thoracentesis	✓			✓
1 instruction manual	✓	✓	✓	✓

#### Accessories

	MW4	MW4A	MW15	MW17
1 irrigator	✓			✓
1 funnel		✓		✓
1 syringes (50ml)	✓	✓	✓	✓x2
1 joint hose			✓	✓
1 tube with three-way stopcock	✓	✓		✓
1 plastic jar	✓	✓		✓



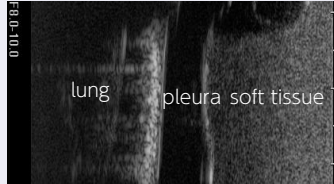
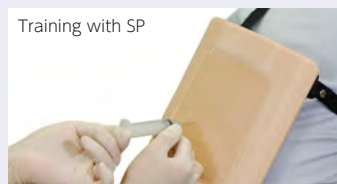
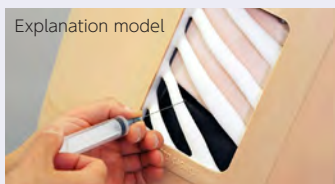
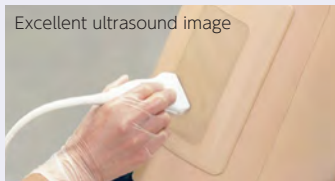
## Thoracentesis

### Simulate thoracentesis on both a torso and SP

Ultrasound-Guided Thoracentesis Simulator features two types of puncture units: mid-scapular line access and mid-axillary line access. Strap-on (wearable) puncture units facilitates hybrid training sessions with simulated patients.

#### FEATURES

- 1 | Palpable ribs
- 2 | Realistic needle-tip insertion and resistance
- 3 | Strap-on units to practice patient positioning and communication
- 4 | Two sites for access: right mid-scapular line and left mid-axillary line
- 5 | Volume of pleural effusion can be controlled to set different levels of difficulty.
- 6 | Body torso for independent training. (Only for MW4)



## Pericardiocentesis

### Practice patient safety during pericardiocentesis with ultrasound guidance

This simulator allows trainees to insert the needle under ultrasound guidance, pierce the "pericardial sac" and aspirate pericardial fluid.

#### FEATURES

- 1 | Durable and replaceable puncture pad
- 2 | Practice both the subxiphoid approach and parasternal approach through palpable and ultrasonic landmarks.
- 3 | Realistic needle tip sensation during puncture of the "pericardial sac"



Identification of "Larrey's point" (left xiphisternal junction) for needle insertion.

Inserting needle to the pericardial space with ultrasound guidance. Ventricles, ribs, pericardium, liver and main artery can be visualized.

## DESCRIPTIONS

#### SPECIFICATIONS

Torso size: W40 x D25 x H50 cm / 15.7 x 9.9 x 19.7 inch  
 Thoracentesis pad size: W16 x D7 x H21 cm / 6.3 x 2.76 x 8.3 inch  
 Pericardiocentesis pad size: W16 x D14 x H21 cm / 6.3 x 5.6 x 8.3 inch

#### MATERIALS

Soft resin, hard resin  
 Latex free

#### REPLACEMENT PARTS

11383-010 puncture pad  
 11383-020 mid-scapular line unit puncture pads  
 11383-030 replacement lung  
 11394-010 pad for MW15

#### RECOMMENDED DEVICES

Thoracentesis: 22 G/ 23 G needle  
 Pericardiocentesis: 18 G needle

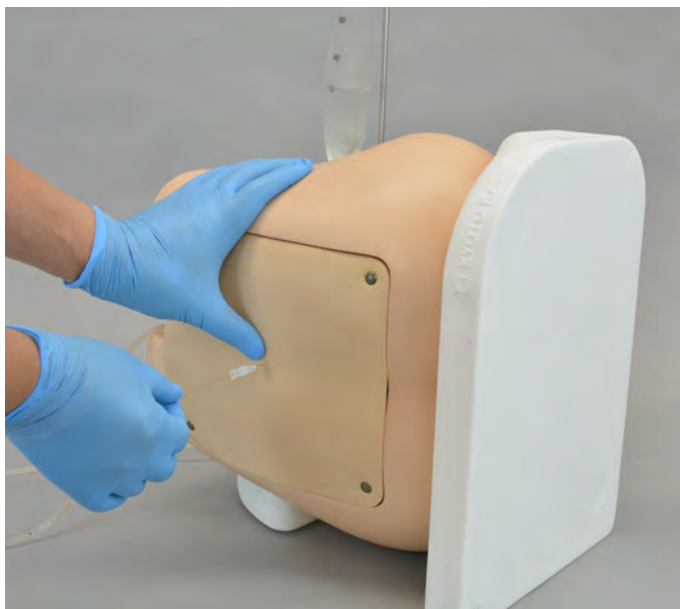
M43B/M43B-B



# Lumbar Puncture Simulator IIA

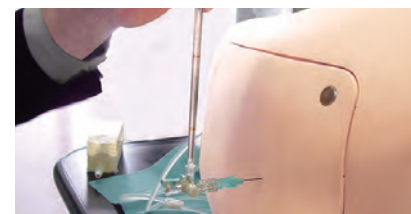
## World's best training simulator for lumbar puncture and epidural anesthesia

Five types of puncture blocks enhance training with different types of challenges



### Product Supervision

Takahiro Amano, M.D.  
Vice President  
Senior Vice-Dean, Postgraduate School  
Professor and Director, Center of Postgraduate  
Medical Education  
International University of Health and Welfare  
Honorary Director, Sanno Medical Center



### FEATURES

- 1 | Anatomically accurate
- 2 | Realistic skin and tissue resistance during insertion
- 3 | Measure CSF fluid pressure, collect CSF fluid and practice epidural anesthesia procedures
- 4 | Simulates administration of epidural nerve block with realistic needle-tip sensation
- 5 | Simulates loss of resistance technique
- 6 | Model stand for either individual or group practice

### SKILLS

- | Palpation of landmarks
- | Lumbar puncture
- | CSF collection
- | CSF pressure measurement
- | Epidural anesthesia
- | Anatomical understanding

### KEY FEATURES

5 types of puncture blocks for variable kinds

- | normal
- | obese
- | senior
- | senior obese
- | epidural



### DESCRIPTIONS

#### SPECIFICATIONS

Size: W33 x D21 x H30 cm  
W13 x D8.3 x H11.8 inch

	lumbar puncture blocks	M43B	M43B-B
1 lumbar region model	2 normal CSF	✓	✓
1 lumbar region skin cover	1 obesity CSF	✓	✓
1 two way support base	1 senior CSF	✓	✓
1 base for team teaching	1 senior obesity CSF	✓	✓
	1 epidural	✓	✓
	1 lumbar spine model	✓	✓

#### MATERIALS

Soft resin  
Latex free

#### RECOMMENDED DEVICES

-

#### REPLACEMENT PARTS

1 irrigation bag	11348-090	1 LP block (normal CSF)
1 syringe	11348-110	1 LP block (obesity CSF)
1 stand for irrigation bag	11348-120	1 LP block (senior CSF)
1 instruction manual	11348-130	1 LP block (senior obesity CSF)
1 storage case	11348-140	1 epidural block
	11348-150	1 lumbar region skin cover



M43E

# Ultrasound Compatible Lumbar Puncture/ Epidural Simulator

## Lumbar puncture training with ultrasound guidance

Anatomically correct puncture block offers excellent ultrasound images



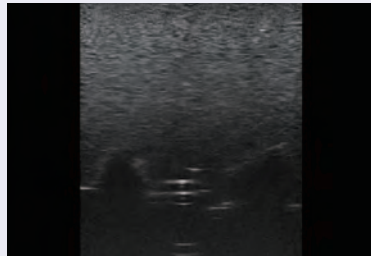
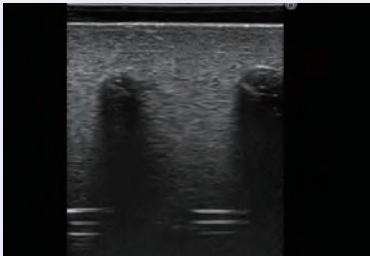
### FEATURES

- 1 | Durable and replaceable parts for repetitive practice
- 2 | Adjustable to an upright or lateral position.
- 3 | Translucent block makes the needle trace visible.
- 4 | Interchangeable parts for other landmark and fluoroscopic procedure training

### SKILLS

- | Ultrasound-guided lumbar puncture
- | Ultrasound-guided epidural anesthesia
- | CSF collection and CSF pressure measurement

### IMAGES



### DESCRIPTIONS

#### SPECIFICATIONS

Size: W33 x D21 x H30 cm  
W13 x D8.3 x H11.8 inch

#### SET INCLUDES

- |  |                            |
|--|----------------------------|
| 1 lumbar region model  | 1 irrigation bag           |
| 1 ultrasound lumbar puncture/epidural block                            | 1 syringe                  |
| 1 ultrasound lumbar region skin cover                                  | 1 stand for irrigation bag |
| 2 lumbar region support bases<br>(upright position / lateral position) | 1 instruction manual       |

#### MATERIALS

Soft resin, polyurethane elastomer  
Latex free

#### RECOMMENDED DEVICES

Ultrasound machine and needles are not included.

#### REPLACEMENT PARTS

- |           |  |
|-----------|--|
| 11348-190 | ultrasound lumbar puncture /epidural block   |
| 11348-230 | ultrasound lumbar region skin cover for M43E |

MW3

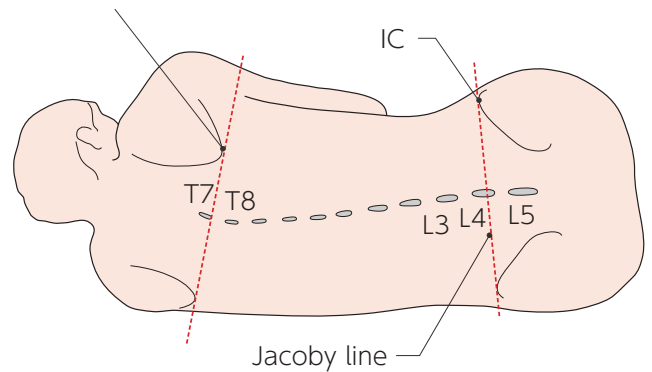
# Epidural Anesthesia Simulator

## Practice and perform epidural anesthesia with confidence

Epidural Anesthesia Simulator offers multiple training methods on both thoracic and lumbar areas, including lumbar punctures.



Angulus inferior scapula



### FEATURES

- 1 | True-to-life resistance with the "pop" sensation
- 2 | Left and right lateral positions
- 3 | Simulates loss of resistance to saline or water
- 4 | The broad puncture pad allows paramedian access as well
- 5 | as median approach.

### SKILLS

- | Epidural anesthesia procedures at lumbar and thoracic area
- | Lumbar puncture



Landmark palpation



Epidural anesthesia



Epidural anesthesia

### DESCRIPTIONS

#### SPECIFICATIONS

Size: W48 x D23 x H29 cm  
W18.9 x D9 x H11.4 inch

#### SET INCLUDES

- 1 | life size unisex torso
- 5 | puncture pads
- 1 | supporting stand
- 1 | 50ml syringe

Soft resin  
Latex free

#### REPLACEMENT PARTS

11382-010 2 replacement puncture pads

#### RECOMMENDED DEVICES

Epidural needle: 18G  
Spinal needle: 21G



MW50

## Strap-on Venipuncture Simulator

### Cost-effective training unit for venipuncture

Strap-on Venipuncture Simulator is a simple, economical training kit for intravenous injection. This trainer is to be strapped onto the upper arm of an SP (Standardized Patient) or a life-size training manikin.



#### FEATURES

- 1 | Realistic tissue and vein wall resistance
- 2 | Vein tube can be filled and refilled easily using a soft plastic bottle that works as a manual pump.
- 3 | Three vein tubes are embedded: 2 normal and 1 thin.

#### SKILLS

- | Blood collection and intravenous injection

#### DESCRIPTIONS

##### SPECIFICATIONS

Size: W25 x D11 x H3 cm  
W9.8 x D4.3 x H1.2 inch

##### SET INCLUDES

- 5 puncture pads (vein tube embedded)
- 5 supporting frames
- 5 belts
- 5 injection bottles
- 5 syringes
- instruction manual

##### MATERIALS

Soft resin  
Latex free

##### REPLACEMENT PARTS

11431-010 5 replacement puncture pads

##### OPTIONAL PARTS

11430-010 Arm Vessels Anatomy Sleevelet  
11388-400 Cotton Swab for Coloring (Red) 10 pcs

##### RECOMMENDED DEVICES

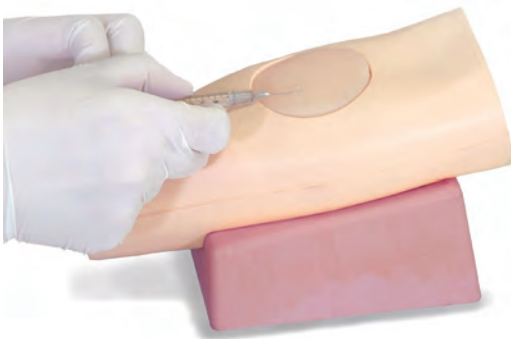
-

M94

## Intradermal Injection Training Simulator

### Wheal can be shown by correct injection

This simulator provides training for intradermal injection to the inner forearm. Swelling of the skin will form when proper injection procedures are followed.



#### FEATURES

- 1 | Life-like touch and resistance of the injection site resembles the human arm
- 2 | Injection pads are easily changeable.
- 3 | No needle trace remains.

#### SKILLS

- | Intradermal Injection

#### DESCRIPTIONS

##### SPECIFICATIONS

Size: W9 x D20 x H8 cm  
W3.5 x D7.9 x H3.1 inch

Weight: 0.3 kg/ 0.7 lbs

##### SET INCLUDES

- 5 puncture pads
- 1 forearm model
- 1 supporter stand
- 1 storage case
- 1 instruction manual

##### MATERIALS

Soft resin  
Latex free

##### REPLACEMENT PARTS

11346-010 1 replacement puncture pad

##### RECOMMENDED DEVICES

Needle 29G

\*Needle not included.

# Peripheral Venous Catheter Placement Simulator

**Holistic simulation of peripheral intravenous access management in just one arm**



## FEATURES

- 1 | IVC insertion and management from start to finish
- 2 | Two puncture sites: median antebrachial vein and dorsal veins
- 3 | Durable puncture pad

## SKILLS

- | Infection control
- | Use of tourniquet
- | Identifying puncture site
- | Sterilization of puncture site
- | Puncture with IV cannula
- | Confirmation of flashback
- | Application of pressure on vein
- | Preparing and administering IV medications (simulated)
- | Dressing and securing cannula



Confirmation of flash back



Fixation



Application of pressure to vein

## DESCRIPTIONS

### SPECIFICATIONS

Size: W52 x D10 x H10 cm  
W20.5 x D3.9 x H3.9 inch

### SET INCLUDES

- |   |                                       |
|---|---------------------------------------|
| 1 arm model                                   | 1 stand for bottle of simulated blood |
| 2 injection pads for dorsal veins of hand     | 1 infusion set                        |
| 2 injection pads for median antebrachial vein | 1 infusion bag                        |
|   | 1 syringe (50ml)                      |
| 1 bottle for simulated blood                  | 1 plastic beaker                      |

### MATERIALS

Soft resin  
Latex free

- |                                       |
|---------------------------------------|
| 10 simulated blood sticks (swab type) |
| 1 carrying bag                        |
| 1 instruction manual                  |

### RECOMMENDED DEVICES

IV catheter needle 22G,  
butterfly needle 23G

### REPLACEMENT PARTS

- |           |   |
|-----------|---|
| 11388-200 | 2 injection pads for median antebrachial vein |
| 11388-300 | 2 injection pads for dorsal veins of hand     |
| 11388-400 | 10 simulated blood sticks (swab type)         |





NEW

# Laparoscopic Suture Simulator -Assessment System-

## Real and objective assessment to develop first class surgeons

Laparoscopic Suture Simulator evaluates skills in laparoscopic intestinal suture, as well as simple skin suture and forceps training. Simulate true-to-life scenarios by using real clinical devices, life-like softness and anatomy of the intestinal wall and dermis.

### Product Supervision

Prof. Hashizume, Center for Advanced Medical Innovation Kyushu University

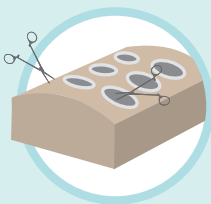


### FEATURES

- 1 | Innovative assessment criteria provide quantitative and objective feedback
- 2 | Individual assessment data can be saved for reviewing and analysis
- 3 | True-to-life simulated tissue that provides convincing hands-on experiences.
- 4 | Actual clinical instruments can be used.
- 5 | A variety of training options
- 6 | Convenient all-in-one unit

### SKILLS

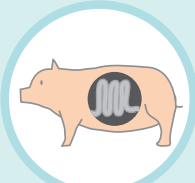
- | Laparoscopic intestinal suture
- | Skin suture under direct vision
- | Handling of laparoscopic instruments



### Box trainer only

**Disadvantage** Limited to simple tasks

**Advantage** Easy to use



### Wet-lab

**Disadvantage** Hard to set & clean up, concerns in ethical issues

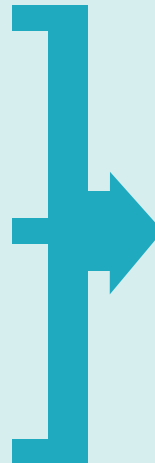
**Advantage** Realistic



### Virtual reality simulators

**Disadvantage** Lack of realistic feel

**Advantage** Objective skills assessment



## Integrating Advantages of Different Training Methods

- 1 | Easy to use
- 2 | Realistic tissue response
- 3 | Objective feedback



## Laparoscopic Intestinal Tract Suture

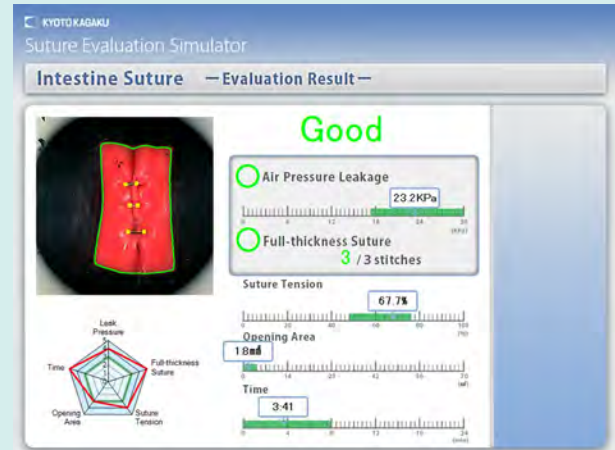
# 1 | Quantitative Feedback combined with Realistic Hands-on Experience

## Judging success or failure

- 1 Is the wound sutured without a leak?
- 2 Is suture completed through muscular layer to mucosal layer?
- 3 Is ligature appropriate for suture?
- 4 How much open area is there in mucosal layer?
- 5 How long does it take for suturing procedure?

The system utilizes five criteria to evaluate laparoscopic suturing skills.

Each criteria has an "acceptable" range based on expert surgeons to help improve performance.



Air leak from the sutured area can be checked by applying air pressure on the intestinal tract sheet.

\* Uemura M et al. Surg Endosc. 2014. PMID: 25005015 / DOI: 10.1007/s00464-014-3681-9

# 2 | Life-like Intestinal Tract

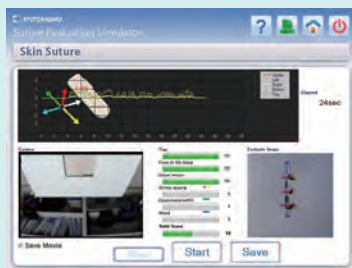
Intestinal tract has four layers with respective characteristics. When holding with forceps and suturing, these four layers react like real tissue.



## Laparoscopic Forceps Training

Evaluate simple interrupted skin suturing via quantitative assessment criteria. The Objective evaluation encourages honing of skills.

Forceps Training mode enables dry box training to handle laparoscopic instruments.



## DESCRIPTIONS

### SPECIFICATIONS

Size: W50 x D110 x H160 cm  
W19.7 x D43.3 x H63 inch

Weight: 93 kg/205lbs

Power: AC100-240V, 50/60 Hz  
Power Consumption: 180 VA

### MATERIALS

Soft resin  
Latex free

### RECOMMENDED DEVICES

-  
Forceps are not included.

### REPLACEMENT PARTS

-

### SET INCLUDES

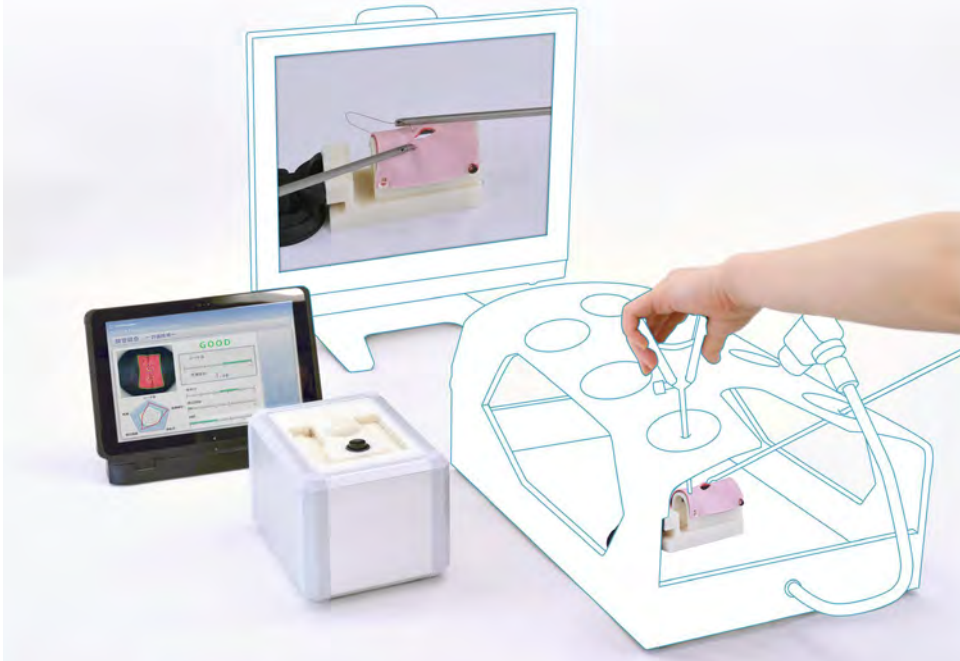
1 monitor	1 video camera for procedure recording
1 touch-monitor	1 torso body
1 video camera for assessment (intestinal tract suture)	1 unit base
1 video camera for assessment (skin suture)	1 printer
	1 key board

1 set of trocar
1 container
30 pieces of suturing sheet (intestinal tract)
30 pieces suturing sheet (skin)
1 instruction manual



# Laparoscopic Suture Training System -Laparo Cube

## Quantitative Feedback combined with Realistic Hands-on Experience



### Product Supervision

Makoto Hashizume, Professor, Center for Advanced Medical Innovation, Kyushu University, Japan  
Munenori Uemura, PhD Professor (Assistant), Center for Advanced Medical Innovation, Kyushu University, Japan

### FEATURES

- 1 | Innovative assessment criteria and quantitative measurement provide objective feedback to trainers.
- 2 | Trainees' personal skills assessment data can be saved for reviewing and analysis.
- 3 | Actual clinical instruments can be used.
- 4 | Realistic and lifelike suturing sheet.
- 5 | Able to create your own passing standard or adjust criteria threshold to trainees' level.

### SKILLS

- | Laparoscopic suturing (simple interrupted suture)

### KEY FEATURES

#### Judging success or failure

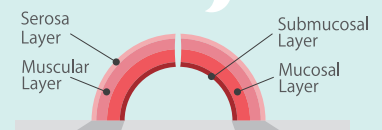
- 1 | Is the wound sutured without a leak?
- 2 | Is suture completed through muscular layer to mucosal layer?
- 3 | Is ligature appropriate for suture?
- 4 | How much open area is there in mucosal layer?
- 5 | How long does it take for suturing procedure?



#### Life-like Intestinal Tract

Intestinal tract has four layers with respective characteristics. When holding with forceps and suturing, these four layers react like real tissue.

#### Easy to set up!



### DESCRIPTIONS

#### SPECIFICATIONS

Weight: 1.5kg / 3.3lbs  
(Assessment unit)

Power: AC100V-240V 50/60Hz

Power Consumption:  
26VA : Assessment unit  
40VA : PC

#### SET INCLUDES

- |   |   |
|---|---|
| 1   laparoscopic suturing assessment unit | 1   PC  |
| 1   power cable for assessment unit       | 1   power cable for PC                          |
| 1   set of skin sheet holder              | 1   pieces of suturing sheet (intestinal tract) |
| 1   cable                                 | 1   pieces of suturing sheet (skin)             |
| 1   keyboard                              |   |

#### MATERIALS

Soft resin  
Latex free

- |                        |
|------------------------|
| 1   container          |
| 1   instruction manual |

#### REPLACEMENT PARTS

11395-010 30 sets of suturing sheet  
※ 1 set consist of inner layer & outer layer

#### RECOMMENDED DEVICES

-

Box trainer, display monitor, and forceps and camera are not included in set



# Abdominal Intraoperative & Laparoscopic Ultrasound Phantom "IOUSFAN"

## Effective training tool for abdominal intraoperative ultrasound examination

Phantom of abdominal organs to simulate ultrasound examinations during open and laparoscopic surgery

### Product Supervision

Junji Machi, MD, PhD  
University of Hawaii at Manoa and Kuakini Medical Center



Intraoperative ultrasound



Laparoscopic ultrasound

### ANATOMY and PATHOLOGIES

#### Liver

- | segmental anatomy
- | portal and hepatic venous system
- | ligamentum teres and ligamentum venosum

#### Biliary Tract

- | gall bladder
- | cystic duct
- | intrahepatic and extrahepatic bile ducts

#### Pancreas

- | pancreatic Duct

#### Spleen

#### Kidneys

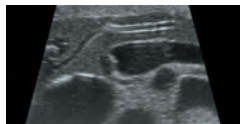
#### Detailed vascular structures

- | aorta
- | vena cava
- | celiac artery and branches
- | portal vein and branches
- | superior mesenteric vessels
- | renal vessels

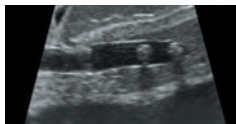
#### Biliary Stones and Cysts

#### Solid Tumors in liver, pancreas, spleen and kidneys

- | hypoechoic
- | hyperechoic



Pancreatic head



Bile duct stones



Gallstones

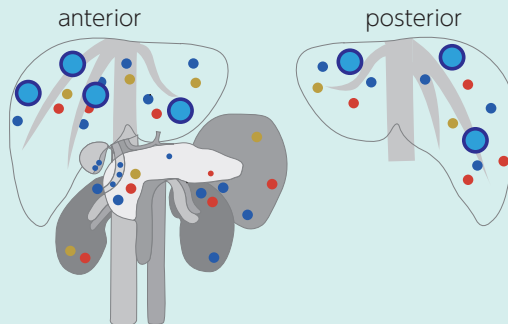
### FEATURES

- 1 | Soft phantom materials allow realistic probe manipulation.
- 2 | Various simulated lesions.
- 3 | Detachable stomach and duodenum for various scanning of the bile duct and pancreas.

### SKILLS

- | Abdominal intraoperative ultrasound examination
- | Laparoscopic ultrasound examination

### Pathologies Sites



- **Simulated cysts**  
1 cm / 0.4 in
- **Hypoechoic**  
1 cm / 0.4 in
- **Simulated tumors**  
1 cm / 0.4 in
- **Simulated tumors with double edge**  
2 cm / 0.8 in

### DESCRIPTIONS

#### SPECIFICATIONS

Size: W30 x D38 x H17.5 cm    Weight: 5.8kg / 12.8lbs  
W11.8 x D15 x H6.9 inch

#### SET INCLUDES

- 1 | upper abdomen ultrasound phantom
- 1 | stomach ultrasound phantom
- 1 | phantom container
- 1 | tutorial manual (DVD)

#### MATERIALS

Polyurethane elastomer  
Latex free

#### RECOMMENDED DEVICES

-

\*Ultrasound scanner is not included.



M57B



# Suture Evaluation Simulator

## Score your suturing

Evaluate simple interrupted skin suturing techniques by quantitative assessment criteria. Objective evaluation score and record of learning curve would encourage and motivate trainees to improve skills

### FEATURES

- 1 | Three modes for different training purposes.  
-Evaluation: objective evaluation for self-learning  
-Learning: reference of examples and recorded data  
-Examination: skills assessment by the instructor
- 2 | Six evaluation criteria to guide skill improvement

### SKILLS

- | Suture: Simple interrupted suture
- | Ligature: Instrument tying



### DESCRIPTIONS

#### SPECIFICATIONS

Power: AC100V-240V, 50/60 Hz

#### SET INCLUDES

- |                             |                            |
|-----------------------------|----------------------------|
| 1 unit base                 | 1 movie demonstration (CD) |
| 1 skin suturing unit        | 1 storage case             |
| 40 sheets of simulated skin | 1 instruction manual       |
| 1 USB unit                  |                            |
| 1 PC with software          |                            |

#### MATERIALS

-

#### RECOMMENDED DEVICES

-

#### REPLACEMENT PARTS

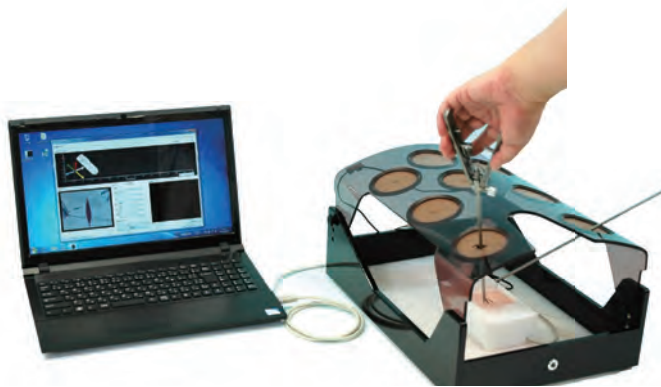
11230-010 40 simulated skins

\* Instruments are not included.

M57C2

# Laparoscopic Suture Evaluation Simulator

Quantitative assessment of suturing skills using laparoscopic forceps.



\*Training box is not included in the standard set

### FEATURES

- 1 | Three modes for different training purposes.  
-Evaluation: objective evaluation for self-learning  
-Learning: reference of examples and recorded data  
-Examination: skills assessment by the instructor
- 2 | Six evaluation criteria to guide skill improvement

### SKILLS

- | Suture: Simple interrupted suture
- | Ligature: Instrument tying



#### SPECIFICATIONS

Power: AC100V-240V, 50/60 Hz

#### SET INCLUDES

- |                             |                      |
|-----------------------------|----------------------|
| 1 M57C suturing unit        | 1 instruction manual |
| 40 sheets of simulated skin |                      |
| 1 USB unit                  |                      |
| 1 PC with software          |                      |
| 1 demonstration movie (CD)  |                      |

### DESCRIPTIONS

#### MATERIALS

-

#### RECOMMENDED DEVICES

-

#### REPLACEMENT PARTS

11230-010 40 simulated skins

Instruments are not included.



M83

# Suture Practice Trainers -Full set-

Various types of skins to improve the basic of suturing skills



## FEATURES

- 1 | The artificial skin can be cut easily at any site to prepare a novel wound.
- 2 | The soft skins are made of durable materials.
- 3 | Simple and durable supporters keep the soft skins arched or
- 4 | maintain tension in the tubular models.
- 5 | All instruments for the practice session are included in the package.

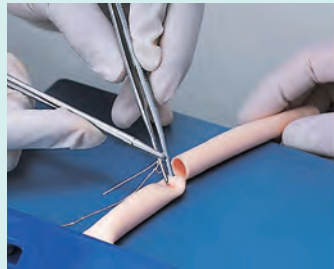
## SKILLS

4 skills for suture: abdominal skin suture, blood vessel suture, intestinal suture, limbs skin suture

## KEY FEATURES



Abdomen



Blood vessel



Intestine



Limbs

## DESCRIPTIONS

### SPECIFICATIONS

-

### SET INCLUDES

- |  |                                   |
|--|-----------------------------------|
| 1 set of simulated skins, ducts and supporters | 1 set of instruments              |
| - abdomen set: 2 abdominal skins, 1 supporter  | - needle-holders - suture needles |
| - blood vessels: 5 narrow tubes                | - scissors - suture threads       |
| - intestine set: 5 wide tubes, 1 supporter     | - tweezers                        |
| - limbs set: 2 narrow skins, 1 supporter       | 1 storage case                    |

### MATERIALS

Soft resin  
Latex free

### RECOMMENDED DEVICES

-

### REPLACEMENT PARTS

- |           |                     |
|-----------|---------------------|
| 11219-030 | 1 abdominal skin    |
| 11219-050 | 5 blood vessels     |
| 11219-070 | 5 intestinal tracts |
| 11219-010 | 5 limbs skins       |



# Difficult Airway Management Simulator -Assessment System-

## Enhance your intubation technique to ensure and maximize patient safety

Product Supervision

This hands on simulator is the world exclusive system that offers objective feedback on intubation skills. Real time visualization of performance allows evaluation, assessment and identification of areas for improvement.

Atsuo Takanishi, Laboratory of Faculty of Science and Engineering, Waseda University



### FEATURES

- 1 | Objective feedbacks are given in two ways:
  - Intubation result: assesses life-saving technique
  - Skills assessment: assesses patient experience
- 2 | Assessment criteria feedback is quantitatively monitored and displayed.
- 3 | Each session can be saved and stored for review and debriefing.
- 4 | A variety of difficult airway conditions can be set by touch panel control.
- 5 | Convenient all-in-one unit

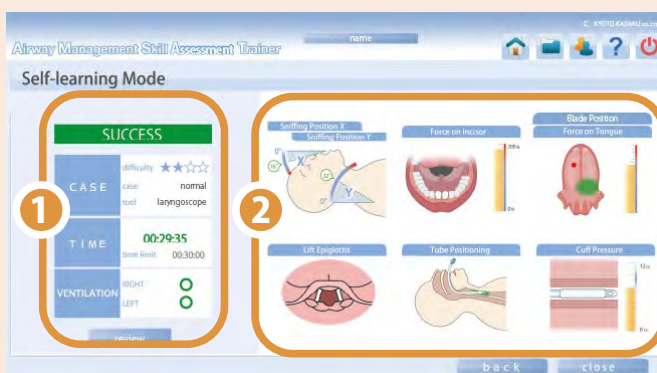
### SKILLS

- | Tracheal intubation
- | Intubation and ventilation on difficult airways

### KEY FEATURES

#### POINT 1

#### Visual Feedback of Objective Assessment



- 1 **Intubation Result Display**  
Successful intubation is defined as dual-lung ventilation within the time limit.

- 2 **Multiple Skill Assessment**  
Objective assessment of based upon the data taken by professionals

## POINT 2

## Normal and 3 Difficulty Levels of Airways



Different levels of difficulty for the intubation procedure can be set with the touch panel. There is one "normal" setting and three additional levels with increasing difficulty.

## POINT 3

## Records of Personal Training History Support Skills Development

The performance assessment can be saved so that users can review their skills and check their improvement.



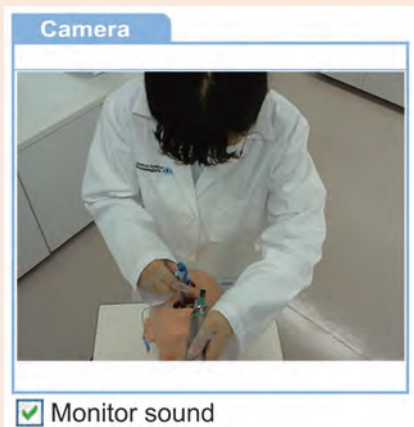
### 5 most recent sessions are visually summarized to analyze each achievement

Sessions are classified by difficulty level, with success rate of the 5 most recent sessions calculated and displayed.



### Record of learning history

A list of each users' data is recorded



### Movie Recording

Overhead monitoring and laryngoscope point-of-view can be displayed and recorded along with the assessment data.

## DESCRIPTIONS

## SPECIFICATIONS

Size: W50 x D110 x H160 cm  
W19.7 x D43.3 x H63 inch

Weight: 82 kg/181lbs

Power: AC100-240V, 50/60 Hz  
Power Consumption: 120 VA

## MATERIALS

Soft resin  
Latex free

## SET INCLUDES

- |                           |                         |
|---------------------------|-------------------------|
| 1 unit base               | 1 keyboard              |
| including 1 video camera, | 1 lubricant for manikin |
| 1 monitor, 1 manikin      | 1 instruction manual    |
| 1 printer                 |                         |
| 1 stereo mini plug        |                         |

## REPLACEMENT PARTS

- |           |                         |
|-----------|-------------------------|
| 11392-040 | 1 chest skin            |
| 11392-050 | 5 pairs of lungs        |
| 11392-060 | 5 stomachs              |
| 11392-090 | 1 face mask             |
| 11390-010 | sensor-installed tongue |

## RECOMMENDED DEVICES

(Macintosh laryngoscope) blade size 4  
(Endotracheal tube) internal diameter 7.5mm  
(Video laryngoscope) AWS-S200  
\* Instruments are not included.

- |           |                                      |
|-----------|--------------------------------------|
| 11390-020 | sensor<br>(blade force and position) |
|-----------|--------------------------------------|

MW13



# Difficult Airway Management Simulator -Training Model-

## From beginners to experts with a range of difficulty levels

Difficult Airway Management Simulator provides training for users from all levels of experience with availability of 24 different cases. The robust structure and stable base make the model compatible for various training scenarios such as emergency, pre-hospital or clinical settings. A variety of actual clinical devices can be used for training, such as laryngoscope, bag valve mask, and a video laryngoscope.



### Variation of DAM Setting



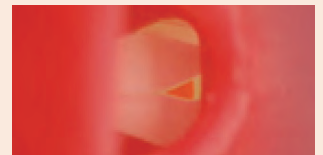
Neck Flexibility  
(Life-like jaw movement)



Mouth Opening  
- Normal  
- Intermediate  
- Difficult



Tongue  
- Normal  
- Swollen



Laryngospasm  
- Normal  
- Laryngospasm

### FEATURES

- 24 variations of patient scenario (including 1 normal case):  
3 stages of mouth opening, 2 stages of neck flexibility,  
2 tongue sizes and 2 positions of the vocal cords
- Upper incisors are designed to break off when excessive force is applied.

### SKILLS

- Airway opening techniques (head tilt, jaw thrust)
- Bag-Valve-Mask ventilation
- Pre-intubation airway assessment
- Recreating the sniffing position
- Pressurization of external larynx to improve the laryngeal view
- Intraoral/Intranasal Intubation
- Use of oropharyngeal airway (OPA)
- Use of nasopharyngeal airway (NPA)
- Use of laryngeal airway mask
- Use of video laryngoscope
- Confirmation of successful ventilation by:  
-observation of thoracic and abdominal movement  
(lung expanding, stomach inflating) or auscultation  
of the chest
- Simulates incorrect procedures including intubation in the  
esophagus and unilateral intubation
- Practice securing tubes after intubation

### Variation of DAM Training



Bag-Valve-Mask  
Ventilation

Confirmation of  
Endotracheal Tube  
Placement

A Variety of  
Possible Airway Skills

### DESCRIPTIONS

#### SPECIFICATIONS

Size: W70 x D39 x H25 cm  
W27.6 x D15.4 x H9.8 inch

Weight: 7kg / 15.4lbs

#### SET INCLUDES

- |                  |                      |
|------------------|----------------------|
| 1 manikin        | 1 instruction manual |
| 3 upper incisors |                      |
| 1 lubricant      |                      |
| 1 syringe        |                      |
| 1 carrying bag   |                      |

#### MATERIALS

Soft resin  
Latex free

#### REPLACEMENT PARTS

- |           |                          |
|-----------|--------------------------|
| 11392-010 | 10 upper incisors        |
| 11392-090 | 1 face mask              |
| 11392-040 | 1 chest cover            |
| 11392-080 | 2 replacement tongues II |
| 11392-050 | 5 pair of lungs          |
| 11392-060 | 5 stomachs               |
| 11229-050 | lubricant                |

#### RECOMMENDED DEVICES

(Macintosh laryngoscope) blade size 3, 4  
(Endotracheal tube) internal diameter  
7.0mm, 7.5mm  
(Laryngeal mask) Air-Q: size 3.5  
LMA Supreme: size 4  
I-gel: size 4  
\* Instruments are not included.

#### OPTIONAL PARTS

- |           |                                 |
|-----------|---------------------------------|
| 11384-100 | bronchofiberscopy training unit |
|-----------|---------------------------------|



MW14



## Difficult Airway Management Simulator -Demonstration Model-

### Great addition to a demonstration tool for airway management

Compact table-top design, anatomical accurate and a variety of DAM settings.  
Ideal for demonstration of skills and devices.



#### FEATURES

- 1 | Anatomically correct airway
- 2 | The incisors are removable when excessive force is applied.
- 3 | Successful tube tip placement can be confirmed by indicators.

#### SKILLS

- | Airway opening techniques (head tilt, jaw thrust)
- | Bag-Valve-Mask ventilation
- | Pre-intubation airway assessment
- | "Sniffing position"
- | Pressurization of external larynx to improve the laryngeal view
- | Intraoral/Intranasal Intubation
- | Use of oropharyngeal airway (OPA)
- | Use of nasopharyngeal airway (NPA)
- | Use of laryngeal mask airway
- | Use of video laryngeal scope
- | Confirmation of successful ventilation by indicators.
- | Feedback of incorrect procedures including esophagus intubation and unilateral intubation
- | Securing the tube in place with tape or Thomas™ endotracheal tube holder

#### DESCRIPTIONS

##### SPECIFICATIONS

Size: W45 x D20 x H25 cm  
W17.7 x 7.9 x H9.8 inch

Weight: 2.65kg/ 5.84lbs

Power:  
Power Consumption:

##### SET INCLUDES

1 manikin	1 syringe
3 upper incisors	1 carrying bag
1 lubricant	1 instruction manual

##### MATERIALS

Soft resin  
Latex free

##### REPLACEMENT PARTS

11393-020	1 face mask
11392-080	2 replacement tongues II
11392-010	10 upper incisors
11229-050	lubricant

##### RECOMMENDED DEVICES

(Macintosh laryngoscope) blade size 3,4  
(Endotracheal tube) internal diameter  
7.0mm, 7.5mm  
(Laryngeal mask) Air-Q: size 3.5  
LMA Supreme: size 4  
I-gel: size 4

\* Instruments are not included.

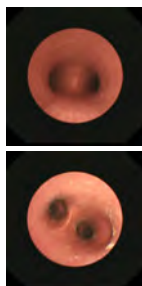
MW19



## Difficult Airway Management Simulator for Bronchofiberscopy

### Realistic trainings in insertion and management of a fiberscope

Anatomically correct trachea and bronchi provides realistic view through a scope,  
allowing recognition of bifurcations.



#### FEATURES

- 1 | Anatomically correct trachea and bronchi that include trachea bifurcation for segmental bronchi.

#### SKILLS

- | Insertion and management of a fiberscope
- | Recognition of bifurcations by a fiberscope
- | Airway opening techniques (head tilt, jaw thrust)
- | "Sniffing position"

#### DESCRIPTIONS

##### SPECIFICATIONS

Size: W45 x D20 x H25 cm  
W17.7 x 7.9 x H9.8 inch

Weight: 2.65kg/ 5.84lbs

##### SET INCLUDES

1 manikin	1 instruction manual
3 upper incisors	
1 lubricant	
1 syringe	
1 carrying bag	

##### MATERIALS

Soft resin  
Latex free

##### REPLACEMENT PARTS

11393-020	1 face mask
11392-080	2 replacement tongues II
11392-010	10 upper incisors
11229-050	lubricant

##### RECOMMENDED DEVICES

(Macintosh laryngoscope) blade size 3, 4  
(Endotracheal tube) internal diameter  
7.0mm, 7.5mm  
(Laryngeal mask) Air-Q: size 3.5  
LMA Supreme: size 4  
I-gel: size 4

\* Instruments are not included.



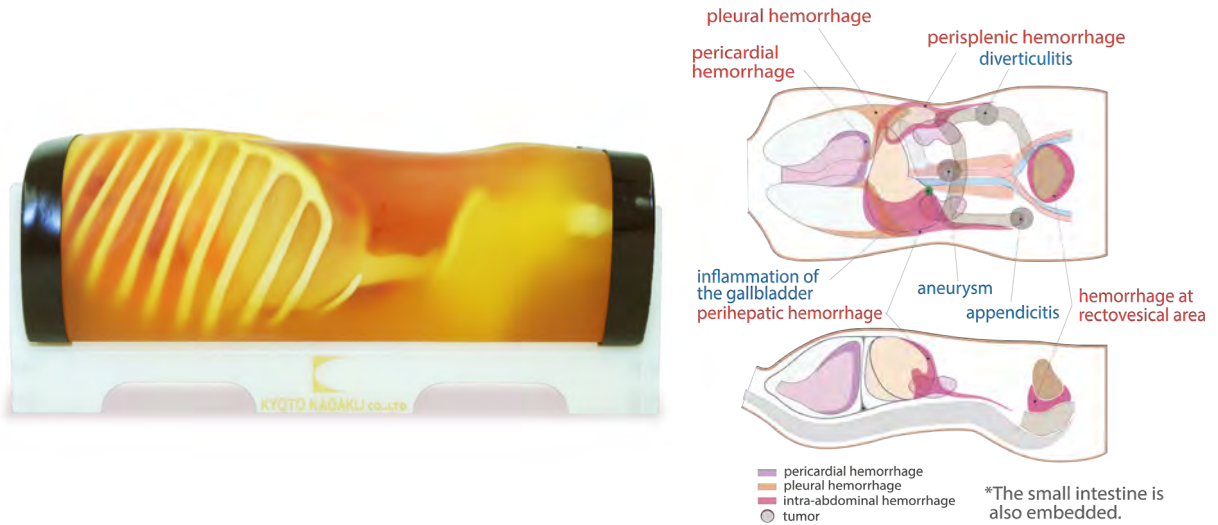
# FAST/Acute Abdomen Phantom "FAST/ER FAN"

## Conduct "FAST" assessment to save a trauma patient!

FAST/ER FAN provides simulated training in FAST (Focused Assessment with Sonography for Trauma); an ultrasound examination directed at detection of the presence of free fluid in trauma patients.

### Product Supervision

Junji Machi, MD, PhD  
University of Hawaii at Manoa and Kuakini Medical Center



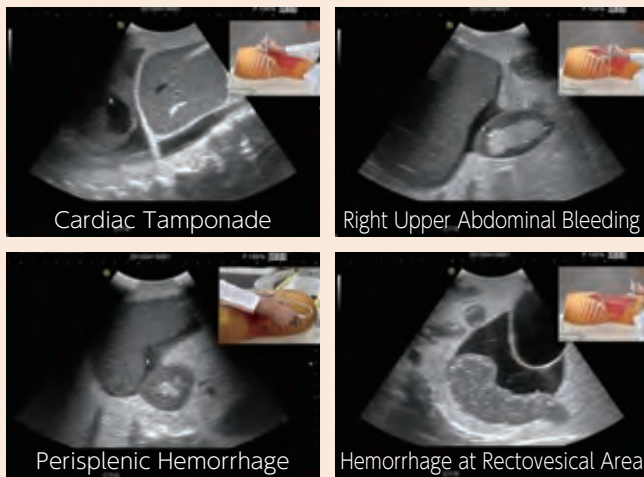
### FEATURES

- 1 | An innovative phantom for repetitive training of FAST as an adjunct to the ATLS primary survey
- 2 | Pathologies include cholecystitis, an aortic aneurysm and a lesion on the colon.

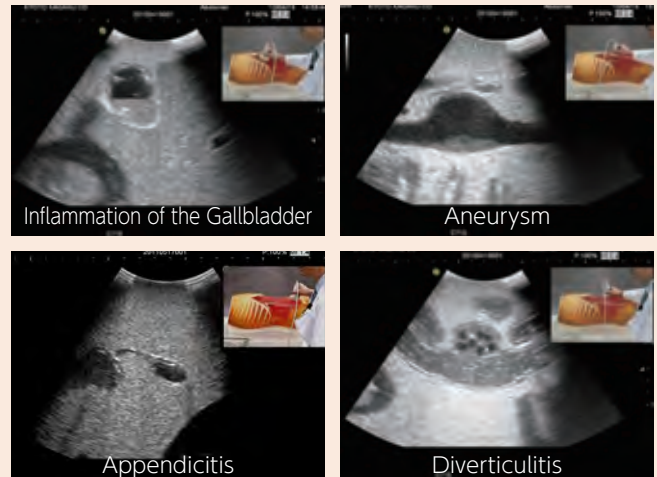
### SKILLS

- | Internal hemorrhage at perihepatic, perisplenic, pelvis and pericardium area
- | Sonography for acute patients

### FAST



### Acute abdomen



### DESCRIPTIONS

#### SPECIFICATIONS

Size: W62 x D30 x H24 cm  
W24.4 x D11.8 x H9.4 inch

Weight: 30kg / 66lbs

#### SET INCLUDES

- 1 | ultrasound phantom with carrying base
- 1 | tutorial manual (DVD)

#### MATERIALS

Polyurethane elastomer  
Latex free

#### REPLACEMENT PARTS

#### RECOMMENDED DEVICES

-

\*Ultrasound scanner is not included.



US-18

NEW

# Fundamental Ultrasound Phantom

This oval phantom helps sonographers with basic trainings



## FEATURES

- 1 | Phantom for basic manipulation of ultrasound transducer
- 2 | Recognition of shape, echogenicity, distance, and practice of horizontal transducer works, which are all you are able to learn through this oval phantom

## SKILLS

- | Interpret 2-D cross sectional images into the shape of 3-D dimensional objects
- | 10 objects are embedded
- | Adjusting Time-Gain Compensation to obtain suitable density
- | Measuring dimensions and distance
- | Transducer handling to obtain accurate 2-D cross-section image
- | Flat and spheroidal surfaces provide a variety of difficulty

## DESCRIPTIONS

### SPECIFICATIONS

Size: W24 x D16 x H11 cm/ W9.5 x D6.3 x H4.3 inch Weight: 2.3kg/ 5lbs

### SET INCLUDES

### MATERIALS

Polyurethane elastomer  
Latex free

### RECOMMENDED DEVICES

### REPLACEMENT PARTS

\*Ultrasound scanner is not included.

US-17

# Rheumatoid Hand Phantom



Ultrasound examination is a key skill for early diagnosis on rheumatoid arthritis.

## FEATURES

- 1 | Ultrasound examination on rheumatoid arthritis
- 2 | Synovial thickening and increased synovial fluid are simulated on middle and ring finger.

## SKILLS

- | Ultrasound examination on rheumatoid arthritis

## DESCRIPTIONS

### SPECIFICATIONS

Size: 17 x 5 x 21 cm  
6 x 2 x 8 inch Weight: 0.6kg/ 1.32lbs

### SET INCLUDES

1	hand manikin	
1	instruction manual	
1	storage case	

### MATERIALS

Polyurethane elastomer  
Latex free

### RECOMMENDED DEVICES

### REPLACEMENT PARTS

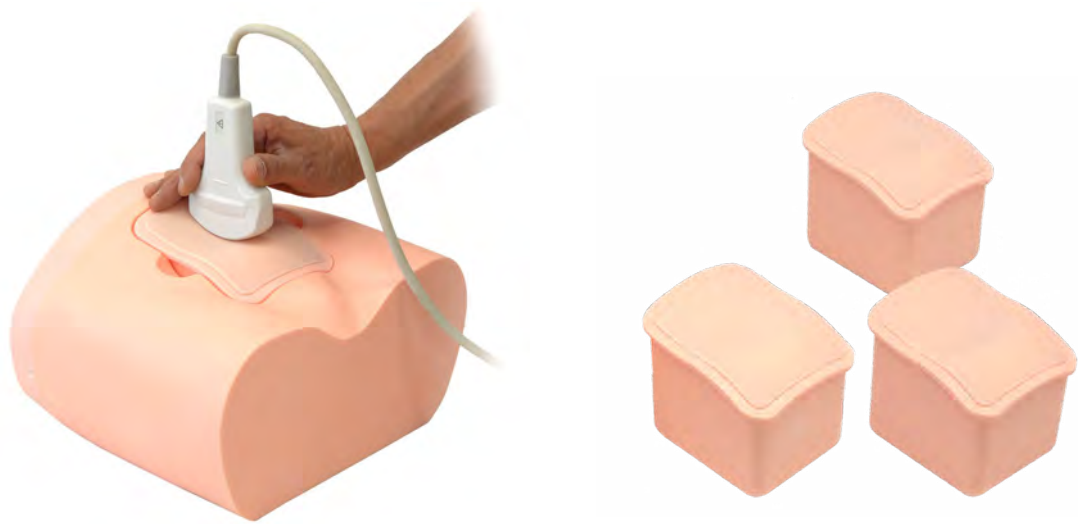
\*Ultrasound scanner is not included.

US-16

NEW

# Intravesical Urine Volume Measurement Phantom

**Pocket-sized ultrasound is gaining popularity and starting to be utilized more in daily care for examination. This method is preferred as catheterization may cause urinary infection.**



## FEATURES

- 1 | 4 variations of interchangeable inserts feature different patient scenarios.

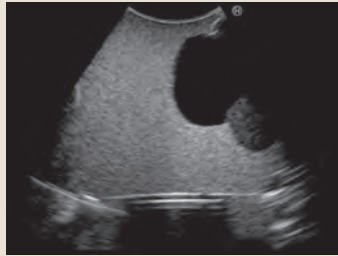
## SKILLS

- | Handling and manipulation of transducers on bladder ultrasound
- | Scanning the bladder to measure urine volume and findings.

## KEY FEATURES



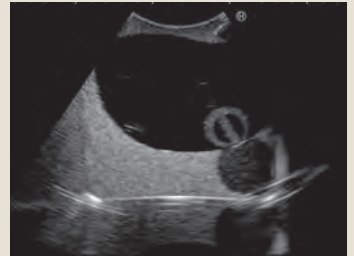
Urine volume 50mL



Urine volume 150mL



Urine volume 300mL



Urinary retention + balloon catheter

## DESCRIPTIONS

### SPECIFICATIONS

Size: 30 x 26 x 18 cm  
12 x 10 x 7 inch

Phantom: 1.5kg / 3.3lbs  
Body: 3.2kg / 7.1lbs

### SET INCLUDES

- 1 lower torso manikin
- 4 ultrasound blocks
- 1 storage case
- 1 talcum powder
- instruction manual

### MATERIALS

Latex free

### RECOMMENDED DEVICES

-

### REPLACEMENT PARTS

-



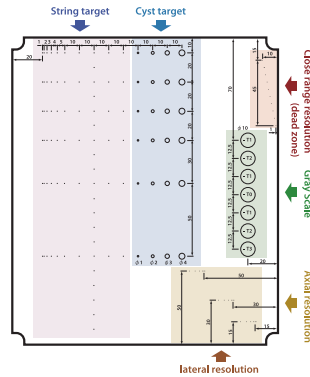
US-2

# Ultrasound QA Phantom (Multi Purpose Phantom N-365)



## Durable and stable

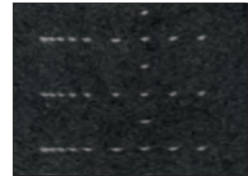
Useful both for daily assessment and further research. Gray scale for evaluation, cyst targets with non-resonance cylinders, line targets for geometrical evaluation including close range (dead zone) resolution, axial and lateral resolution are prepared for scanning. The phantom is designed to allow scanning from all four side walls.



Weight: 3.0kg / 7.5lbs



Gray Scale



String target

## DESCRIPTIONS

### SPECIFICATIONS

Size: 19 x 22 x 7 cm  
7.6 x 8.8 x 2.8 in.

### SET INCLUDES

- 1 phantom
- 1 carrying case

Sonic velocity: 1432m/ sec at 25 degrees C  
Attenuation coefficient: 0.57 dB/ cm MHz at 25 degree C  
Acoustic impedance: 1.38 rayl at 25 degree C

### MATERIALS

Urethane elastomer, acryl, nylon  
Latex free

### RECOMMENDED DEVICES

-

### REPLACEMENT PARTS

US-4

# Breast Ultrasound QA Phantom



## Ensure highly detailed images for reliable breast cancer examinations

Ultrasound QA phantom for high precision imaging in the high frequency sonography around 10 MHz that is required in breast examination. For monthly basic quality check of ultrasound images, as well as longer term quality assurance to maintain consistency of the performance of scanners and transducers.



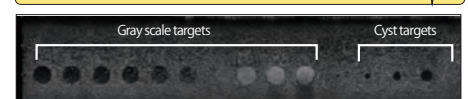
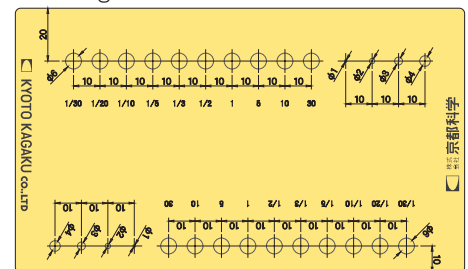
### Mass targets block

Sonic velocity: 1434 m/sec at 25 degrees C  
Attenuation coefficient: 0.59 dB/ cm MHz at 25 degrees C  
Acoustic impedance: 1.37 rayl at 25 degree C  
Integrated target: gray scale targets/ cyst targets

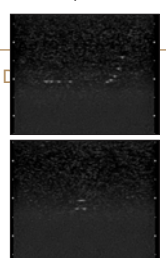
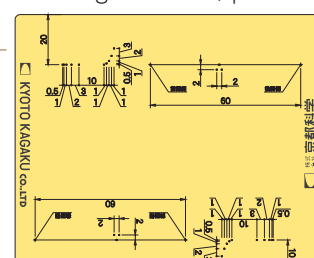
### Dot targets block

Sonic velocity: 1442 m/sec at 25 degrees C  
Attenuation coefficient: 0.73 dB/cm MHz at 24 degrees C  
Acoustic impedance: 1.39rayl at 25 degree C  
Integrated target: dot targets/ 45 degrees line target

### Mass targets block (contrast resolution)



### Dot targets block (spatial resolution)



## DESCRIPTIONS

### SPECIFICATIONS

Size: mass targets block phantom size: 18 x 7.5 x 11 cm / 7.2 x 3 x 4.4 inch  
dot targets block phantom size: 13.5 x 7.5 x 11 cm / 5.4 x 3 x 4.4 inch

### SET INCLUDES

- 1 mass targets block
- 1 dot targets block
- 1 thermometer
- 1 storage case

Weight: Mass 1.3kg / 2.7lbs  
Dot 1.0kg / 2.2lbs

### MATERIALS

Urethane elastomer, acryl,  
nylon  
Latex free



# 70th Anniversary

Thanks to the support of our customer and stakeholders, on June 8, 2018, we are celebrating our 70th anniversary. We would like to express our deepest gratitude to all of you who have supported us throughout these years.

Formerly known as "the specimen's division" of Shimadzu Corporation, Kyoto Kagaku was founded on June 8, 1948.

In line with our company philosophy, "We, Kyoto Kagaku, aim to be as one with our community.", we have contributed to our community through education, culture and welfare. Now in the wake of medical advancement, our activities are widely involved in the field of medical, nursing, welfare education to support healthcare professionals throughout the world.

Upon the occasion of our 70th anniversary, we wish to advance toward the world to achieve further growth and prosperity. We intend to preserve the important tradition built by our predecessors, develop our strengths, respond to the changes of the times and create a foundation for new growth.

We sincerely wish you all your continued guidance and encouragement in the future.

Sincerely,



1st June, 2018  
Tamotsu Katayama  
President  
Kyoto Kagaku Co., Ltd

## OFFICES



### Kyoto Kagaku Co., Ltd Head Office and Factories

15 Kitanekecho-cho, Fushimi-ku,  
Kyoto, 612-8388, Japan

### Kyoto Kagaku Co., Ltd Tokyo Branch

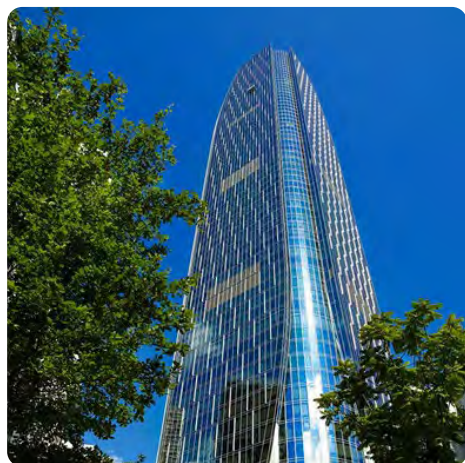
Second fl. NREG Hongo-3-chome bldg., 3-26-6  
Hongo, Bunkyo-ku, Tokyo 113-0033, Japan

### Kyoto Kagaku Co., Ltd Nagoya Branch

3rd Gojinsha Meieki3 bldg., 9-37 Meieki-3-chome,  
Nishi-ku, Nagoya City, Aichi 451-0045, Japan

### Kyoto Kagaku Co., Ltd Sendai Branch

6th. Taiyoseimei Sendaihoncho bldg., 4-18 Honcho-3-chome,  
Aoba-ku, Sendai City, Miyagi 980-0014, Japan



### Kyoto Kagaku Co., Ltd. Hong Kong Representative Office

Level 60, One Island East,  
18 Westlands Road, Island  
East, Hong Kong



### Kyoto Kagaku Co., Ltd. European Representative Office

De-Saint-Exupery-Str.10,  
60549 Frankfurt,  
Germany



### Kyoto Kagaku America Inc.

3109 Lomita Boulevard,  
Torrance, CA 90505-5108,  
USA

Check it out!

## PRODUCT LINEUP WEB

Announcing our new mobile-friendly website,  
containing downloadable product descriptions on over 100 items.

Browse through our lineup of Kyoto Kagaku simulators and phantoms.  
All are made in Kyoto.



lineup kyoto kagaku |



<https://www.kyotokagaku.com/lineup/index.html>



Physical Examinations

Clinical Skills

Clinical Skills

Patient Care

Medical Imaging -Ultrasound-

Obstetric/Neonatal/Pediatric

Medical Imaging -Radiology-



Follow us on our Facebook

<https://www.facebook.com/KyotoKagaku>



Follow us on our YouTube Channel

<https://www.youtube.com/user/KyotoKagaku>



### Kyoto Kagaku NEWS

Discover latest on simulation in healthcare, hands-on skills training, medical imaging phantoms!

↓↓ Send us an e-mail to ↓↓

✉ [rw-kyoto@kyotokagaku.co.jp](mailto:rw-kyoto@kyotokagaku.co.jp)  
to subscribe.



**KYOTO KAGAKU co.,LTD**



<http://www.kyotokagaku.com>



[rw-kyoto@kyotokagaku.co.jp](mailto:rw-kyoto@kyotokagaku.co.jp)

#### Worldwide Inquires and Ordering Head Office and Factories

15 Kitanechoya-cho, Fushimi-ku,  
Kyoto, 612-8388, Japan

☎ +81-75-605-2510

☎ +81-75-605-2519

#### Kyoto Kagaku Co., Ltd. Hong Kong Representative Office

Level 60, One Island East,  
18 Westlands Road, Island East, Hong Kong

☎ +852-3978-1365 ☎ +852-3978-1199

#### Kyoto Kagaku Co., Ltd. European Representative Office

De-Saint-Exupery-Str.10,  
60549 Frankfurt, Germany

☎ +49-69-5060-28160 ☎ +49-69-5060-28170



All American regions

**KYOTOKAGAKU AMERICA INC.**



<http://www.kkamerica-inc.com/>



[info@kkamerica-inc.com](mailto:info@kkamerica-inc.com)

3109 Lomita Boulevard,  
Torrance, CA 90505-5108,  
USA

☎ +1-310-325-8860

☎ +1-310-325-8867